

# THE RIVERWALK



document produced by ARCADE



## Riverwalk as a Community Catalyst

1- The Riverwalk offers a framework for catalyzing engagement with the river and recognition and usage of the river as an asset.

2- The Riverwalk is scalable in terms of intervention in the built environment, from simple wayfinding to full rehabilitation of specific areas, which allows flexibility in how it is implemented.

3 - The Riverwalk allows both short term and long term projects to happen in parallel. It also allows other projects to proceed without creating redundant or mutually exclusive plans with other civic initiatives.

4 - The Riverwalk offers complementary support to all of the civic projects happening in North Adams including the Adventure Trail, Rte 2 Overpass Study, and Grey to Green initiatives by helping residents to actively use the river as a site / path / mindset for recreation in the city.

- The Riverwalk is user oriented, phasable, and defined through iterative design based on actual physical engagement with the river through programming, events, and activations.

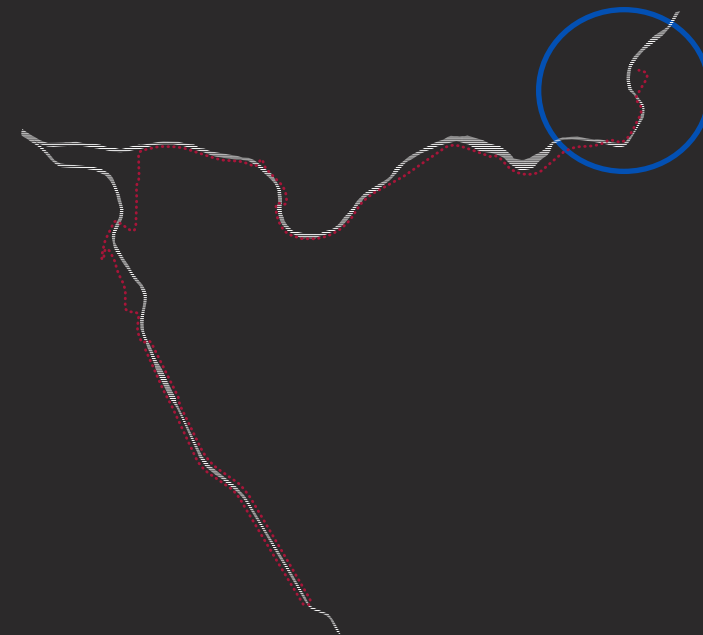


# ***RIVERWALK: 2025***



document produced by ARCADE





## RIVERWALK: PART 1

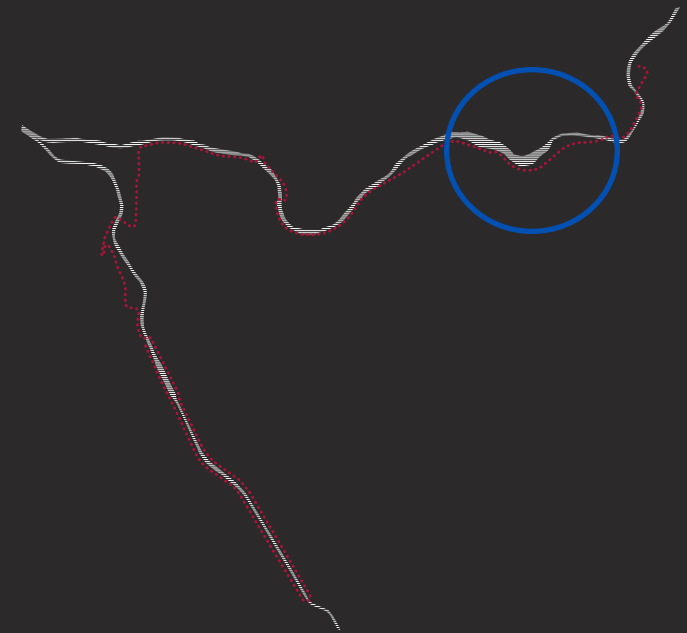
July 27

BEAVER PLAYGROUND TO NATURAL BRIDGE

Hoosic River  
REVIVAL

document produced by ARCADE





**RIVERWALK: PART 2**

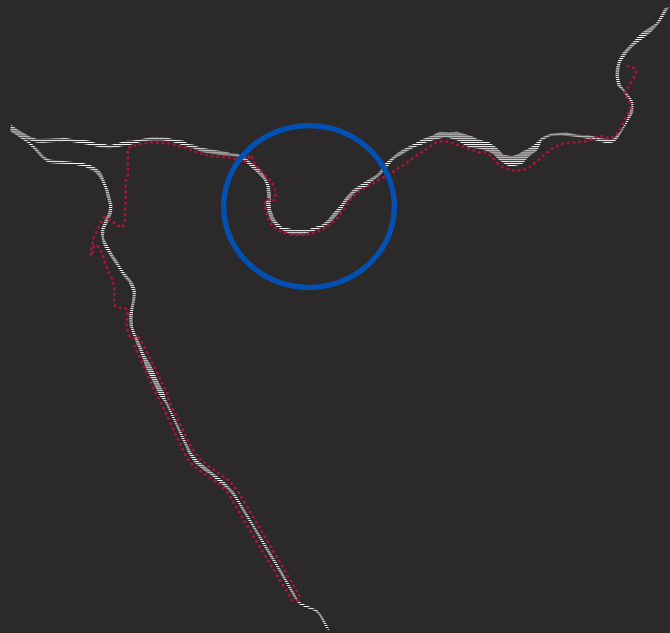
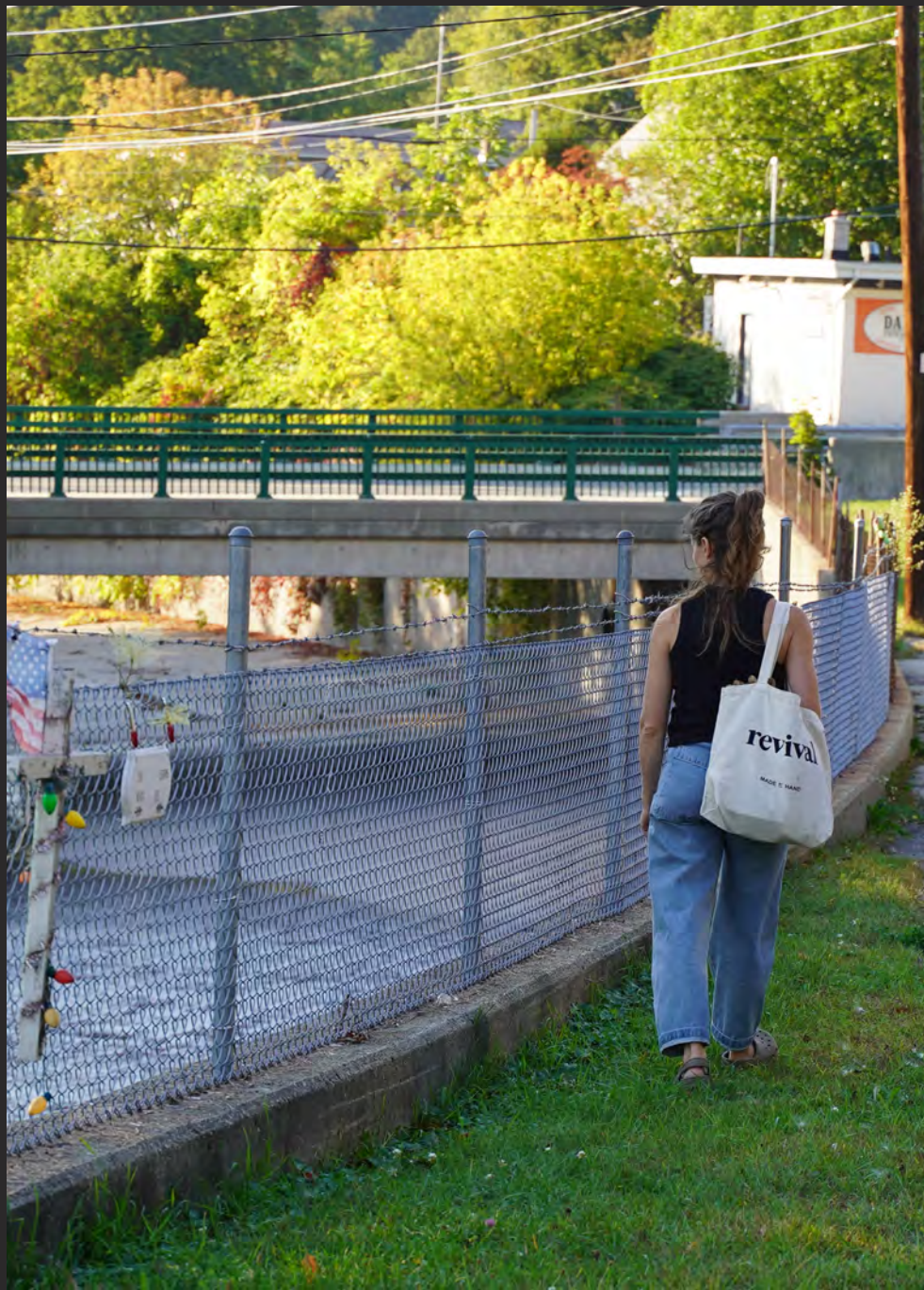
August 31

BEAVER PLAYGROUND TO ECLIPSE MILL



document produced by ARCADE





**RIVERWALK: PART 3** September 28  
ECLIPSE MILL TO HOLDEN STREET



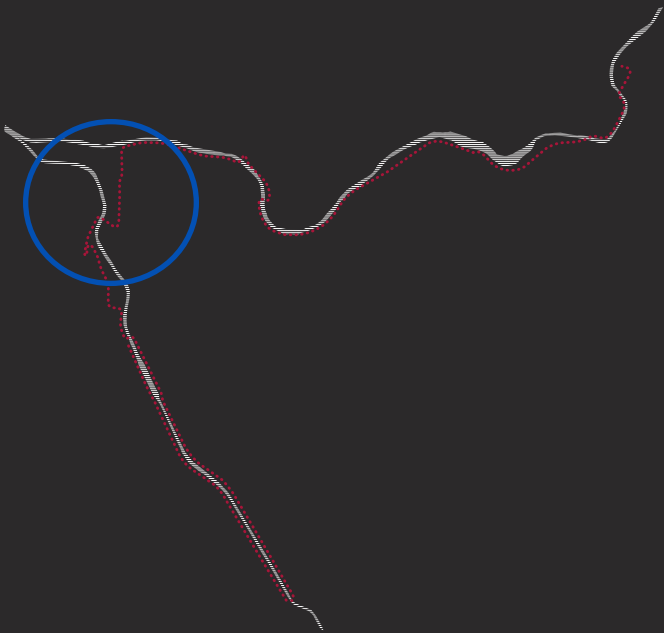
document produced by ARCADE





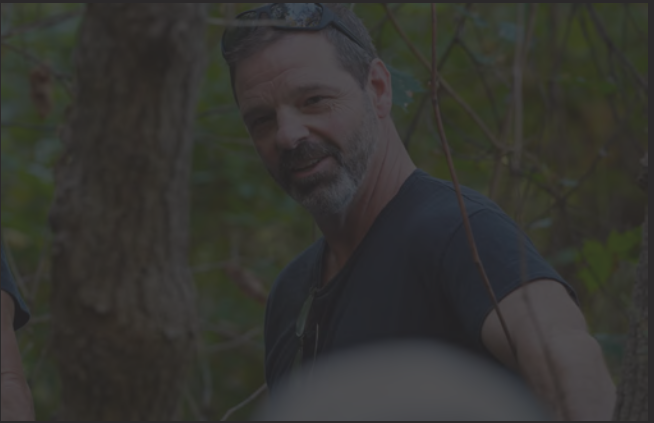
**RIVERWALK: PART 4**  
HOLDEN STREET TO HERITAGE STATE PARK

October 25



document produced by ARCADE

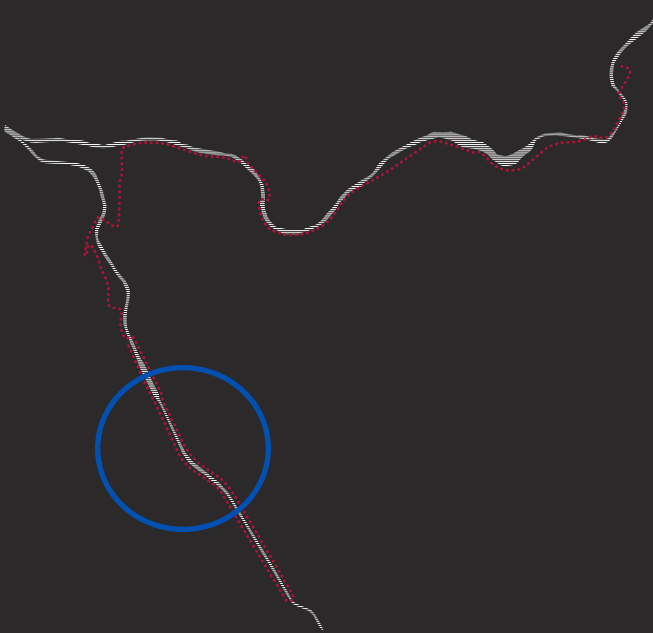




**RIVERWALK: PART 5**

HERITAGE STATE PARK TO HUNTER FOUNDRY ROAD

November 30



document produced by ARCADE

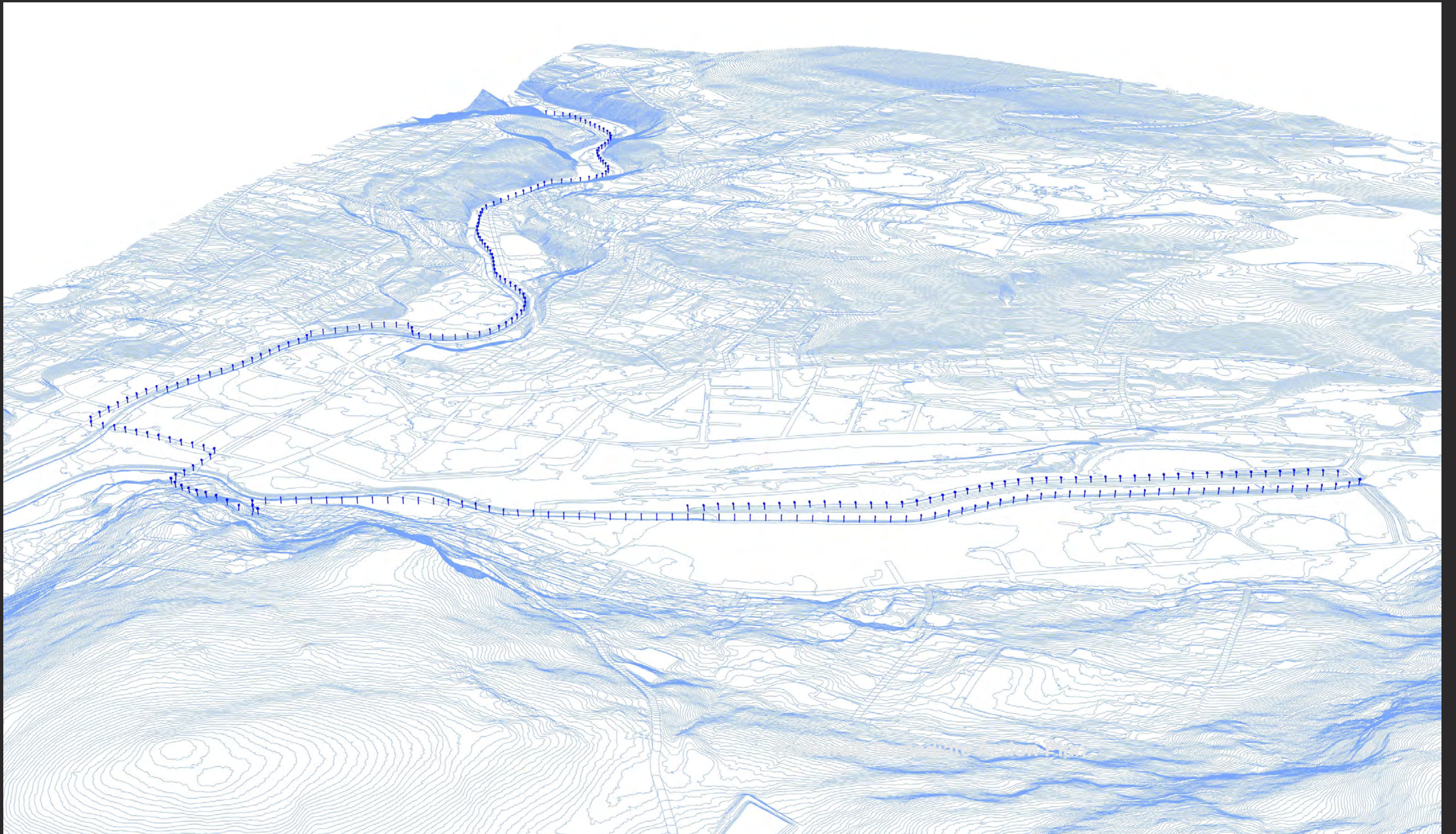


# ***RIVERWALK: 2026***



document produced by ARCADE

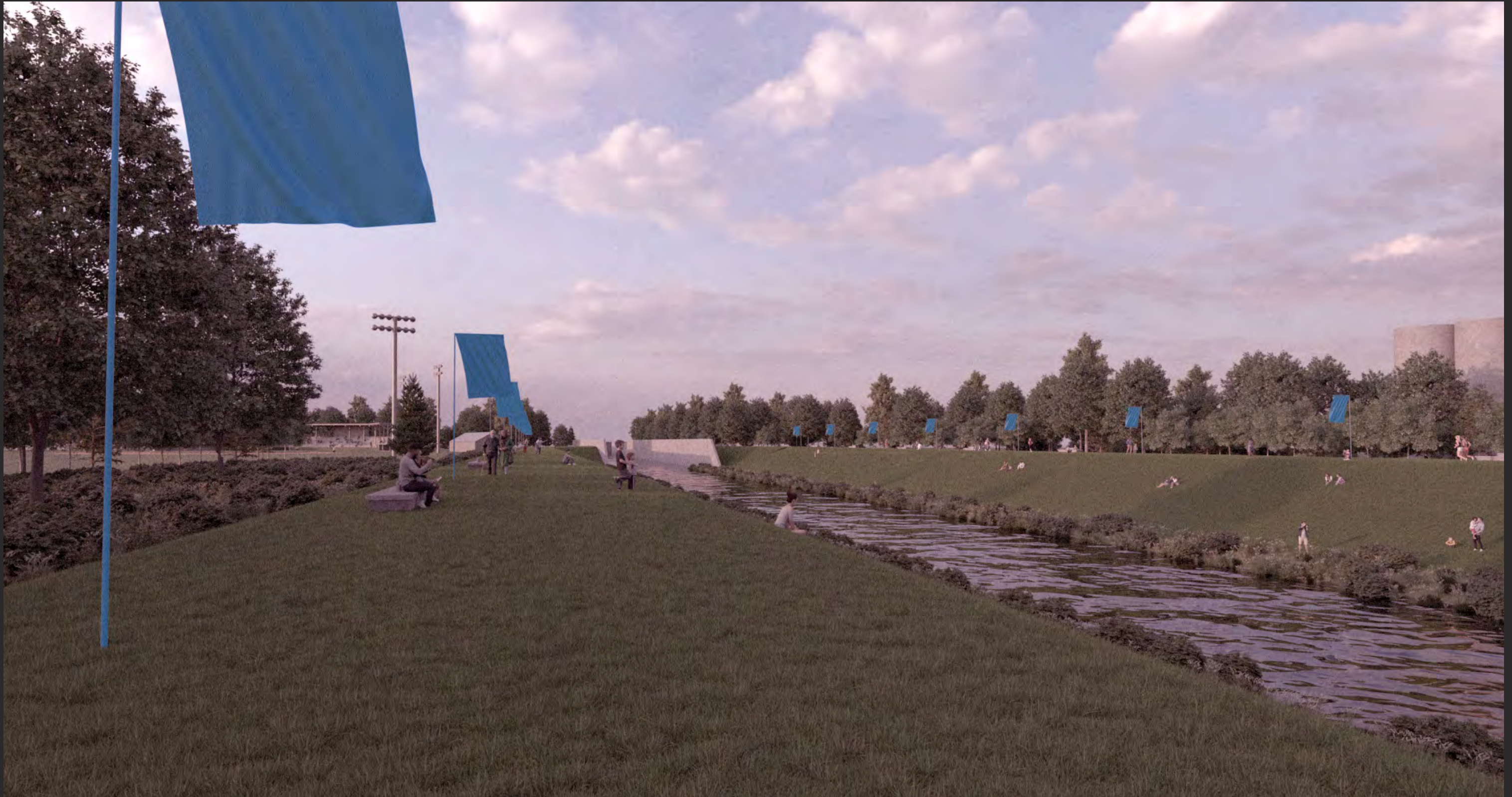




In 2026, HRR could galvanize energy and acknowledgement around the Hoosic with a vertical element of flags that is continuous and visible throughout the city. The flags follow the path of the Riverwalk, linking the North Branch, Downtown, and the Berms into a continuous experience centered on the Hoosic.







The Berms





Willow Dell





Beaver Mill





Willow Dell





Beaver Mill