

Generous People of Fellows Well Flood Budget

GRAPE GROWERS WEEKLY FRESNO TO CLEAN MARKET CLEARING HOUSE

Director of Vineyardist Association Is Father of Crop Project

Grape growers of Kern county, who see in the expansion of the new California Vineyardist association a solution of their fresh grape marketing problems, are meeting with other growers and shippers from all parts of the state in Fresno today to consider plans for forming a grape shippers' clearing house.

Scores of local grape men unable to attend the meeting are being represented by W. K. Lee of Lerdo, a Kern county director in the U. S. A. The clearing house plan was scheduled to be presented before the meeting by Donald Conn, managing director of the vineyardists' association, at 1:30 o'clock.

The proposed clearing house plan is said to have received the approval of the U. S. Department of Agriculture, Department of Commerce and Department of Justice. With Manager Conn as chairman the clearing house committee is composed of Thomas Strain, E. M. Sheehan, C. J. Huebner, Wilmer Seig, L. M. Tracy, I. J. Woodin, H. S. Hazeltine, J. Roy Pinkham and L. A. Weller.

As briefly outlined by Manager Conn before this morning's meeting the grape clearing house will be a central bureau where every available fact in regard to grape production and markets will be available for the individual grower and shipper. The proposal is in no way different from the trade associations of industry.

Is He Versatile? Try This Parlor Trick If You Aspire to Be "Blindfold Wizard"



FORWARD, RIGHT HAND! BACK UP, LEFT! THAT'S HOW THOMPSON WRITES.

AND KEEP ON TALKING! IT'S EASY, DECLARES SIGHTLESS DRIVER.

BOOSTERS ELECT DYE PRESIDENT

Sam Dye, East Bakersfield trucking contractor, was elected president of the Bakersfield Boosters Club at a meeting held Monday afternoon in Druids hall.

Contractor Is Honored; State Engineer Race Is Discussed

While not recommending the deposition of Robert M. Morton, present state highway engineer, the directors communicated with Governor Young and the state commission, urging that in the event a change is made, W. D. Clarke, Bakersfield city engineer, should be named to fill the vacancy.

Youths Sent South to Face Car Charge

Three young men, arrested here Sunday by Police Officers S. L. Mishler and Fred Preston, were released today to the custody of Deputy Sheriff Applegate of Los Angeles.

SUPERVISORS DIVIDE COUNTY GAS REFUND DESPITE PROTEST

TAKING AN STAND that Bakersfield and its environs should profit from the distribution of the motor vehicle gas tax refund, Chairman Ira Williams of the supervisors argued late yesterday in favor of maintaining a general road fund.

"Likker" Here Is Worst Ever, Says Veteran of Cups

Bakersfield "likker" is awful. At least Mike Darity says so, and Mike should know, for he's an expert seaman with many years of shore leave experience.

PRISONER OWNS TO ATTEMPTED ROBBERY

George Barulich, accused of attempted robbery, has changed his plea of "not guilty" to one of "guilty" after the district attorney's office had made preparations to try him and had set the case for trial.

YOUTHS SENT SOUTH TO FACE CAR CHARGE

Three young men, arrested here Sunday by Police Officers S. L. Mishler and Fred Preston, were released today to the custody of Deputy Sheriff Applegate of Los Angeles.

SUPERVISORS DIVIDE COUNTY GAS REFUND DESPITE PROTEST

TAKING AN STAND that Bakersfield and its environs should profit from the distribution of the motor vehicle gas tax refund, Chairman Ira Williams of the supervisors argued late yesterday in favor of maintaining a general road fund.

COAST PROMISED HELP ON AIRWAY

Assurance that the United States Department of Commerce, Aeronautics division, will develop immediately the 400-mile strip of the Great Pacific Airway between San Francisco and Los Angeles through Bakersfield into one of the best equipped airports in the country, was given here today by E. L. Curtis, airway extension supervisor in this district.

PRISONER OWNS TO ATTEMPTED ROBBERY

George Barulich, accused of attempted robbery, has changed his plea of "not guilty" to one of "guilty" after the district attorney's office had made preparations to try him and had set the case for trial.

YOUTHS SENT SOUTH TO FACE CAR CHARGE

Three young men, arrested here Sunday by Police Officers S. L. Mishler and Fred Preston, were released today to the custody of Deputy Sheriff Applegate of Los Angeles.

SUPERVISORS DIVIDE COUNTY GAS REFUND DESPITE PROTEST

TAKING AN STAND that Bakersfield and its environs should profit from the distribution of the motor vehicle gas tax refund, Chairman Ira Williams of the supervisors argued late yesterday in favor of maintaining a general road fund.

MEET, COME OF WEST SIDE GIVE PARSE OF \$988 FOR RED CROSS

Wonderful Response of Oil Workers and Business Men to Call

The Californian, previously acknowledged \$7671.25
Fellows district..... 988.86

Total through The Californian..... \$8660.11
Red Cross Treasurer..... \$2878.75
J. Panero..... 2.50

Total through Red Cross Treasurer..... \$2881.25
Total through The Californian..... \$8660.11
Total through Red Cross..... \$2881.25

Grand total..... \$11,541.36
Quota..... \$6000.00
Over-subscribed..... \$3541.36
Percentage over subscription 44 1/4

Unexpectedly, but none the less welcome, came a most generous subscription late yesterday from the West Side Oil Field, for the benefit of the Mississippi flood sufferers, the total representing the activities of the people of that district, and amounting to the splendid sum of \$88.86.

The history of the Fellows campaign is interesting. Fellows is a part of the West Side Red Cross Chapter, and the West Side's quota was made directly by contribution from funds on hand, so that no campaign in this special case was necessary, but the people of Fellows expressed a desire to contribute to the movement to aid the flood sufferers, and in response to that sentiment, C. M. Small, of the Associated, and O. P. Goode visited the Californian office and asked for blank lists. This was a fortnight ago, and they, with Lloyd Williamson of the California Star Oil Company and O. A. Taber, superintendent of the Manley & McGinn Oil Company, constituted a committee that began the work of canvassing the district. Everywhere they found a sympathetic interest and a ready response, sheet after sheet being filled with the names of subscribers, until the total approached very closely to a thousand dollars.

The business section of Fellows, the residents of the town generally and all represented in the lists that were turned in. So voluminous was the report that it is possible that all the names of contributors may not find space in this column. The Californian, however, will publish hereafter.

Children's Shelter Appeals to Generous Public; \$6000 Fund

Upkeep of Home, With 43 Inmates Dependent on Popular Subscriptions

THE Kern County Children's Shelter, where 43 little ones have their home under the direct charge of Mrs. Elizabeth Coulbough as matron, finds its treasury empty and no available funds in sight for the conduct of that institution for the coming months.

The following letter from the officials of the Kern County Children's Shelter is self-explanatory: Dear Sir: A year and a half ago the board of directors of the Children's Shelter called upon the people of Kern county for \$6000 for the support of the Shelter. The money was raised and it has provided for the Shelter since that time, but the treasury is now empty. There is no money on hand to pay bills past due.

We are now asking the great of Kern county to raise \$6000 to tide us over another similar period. We prefer to follow this plan rather than to call upon the public regularly at a stated time each year, and we hope you will be able, through the columns of your newspaper, to raise the amount asked for.

The average number of children in the Shelter last year, by months, was 39—quite a family—and many of these children have known no other home.

We would have made this request for funds sooner, but other urgent appeals were before the public and we stood aside until the others were through.

The Shelter, as the general public knows it, is a Kern county institution, it receives no state aid, and it must rely upon the generosity of the people for its support.

By MRS. A. W. WELLS, President.
W. A. HOWELL, Secretary.

BABY SLAUGHTER TRIAL IS BEGUN; ALLEGED CHOKER FAILS TO THRILL

Meek, Bald-Headed Man Answers to Grave Charge by State

Charles Woodward, a small, inoffensive appearing, meek, bald-headed man, was tried today in the Superior Court today accused of having smothered a baby to death.

The technical charge against him is manslaughter, and the state has alleged that he smothered a baby to keep it from crying. After the baby's death at a cotton ranch near Arvin, Woodward and his alleged paramour, Mary Roberts, fled in the night and left the baby's body under a culvert where it was found by a Japanese.

Sheriff Cas Walsby designated Vance Brito, a deputy, to the case, and Brito trailed the two itinerant cotton pickers to Imperial valley where they arrested them. The state will probably use Vance Brito as one of its chief witnesses after the jury has been impaneled.

Mary Roberts appeared in courtroom today with the matron from the jail. During the preliminary examination of Woodward she stated that after they failed to revive the baby she wanted to stay and have it buried but they feared the authorities' viewpoint of the affair. They left in the night without waiting to collect wages due them as cotton pickers, according to the sheriff's office.

Originally the state had Mary Roberts charged jointly with Woodward, but the charge against her was dismissed. Now it is expected that she will be the chief witness for the state as her testimony cannot be used to implicate herself in the affair.

She sat quietly in the courtroom while Attorney Alan Campbell, appointed by the court to defend Woodward, carefully examined each prospective juror. She was dressed in a simple print dress which failed to conceal the fact that she is in a delicate condition at the time.

During the examination of jurors, Woodward sat facing them, his lips slightly open and his face with its recessed features, looking toward the jury. Ray Bailey, district attorney, and Tom Scott, Jr., his assistant, are prosecuting the case before Judge R. B. Lambert, who will pass sentence on another day. The jury was impaneled today.

DAIRY INSPECTOR RENDERS REPORT

Trouble With Milk Found Due to Bad Feed, Says Official

The report of Dairy Inspector Penfield to the supervisors for the work of his department during May was as follows:

A total of 165 dairies were inspected; 12 visits were paid to milk dealers; 15 tests of milk and cream to ascertain the butterfat contents were made; an investigation as to the cause of milk coming to a milk distributor with a bad taste and odor was made and the trouble traced to dairies who had used a poor feed and the cause rectified; a dairyman was suspended from selling milk for 10 days on account of high bacteria counts; 156 samples of milk and cream were collected for bacteric counts.

The following milk distributors dispensed milk from sources of which was under 10,000 per cubic centimeter:

F. L. Deacon, Kern Delta Dairy, W. W. Phelps, Mrs. A. E. Woods, A. R. Grobner, J. W. H. Johnson, J. O. O'Hillyard, Rosedale Jersey Dairy, Wilson's Dairy, D. E. Kimble, J. J. Lytle, E. D. Krebs, Teakwood Farm.

MCFARLAND GETS PRESSURE WATER

Municipal System Given New Deep Well and Underground Tank

McFarland's municipal water system is being completely reconstructed this week upon orders of the directors to give the community one of the most modern pressure systems in the county and one that will be adequate to supply a population three times the size of that now within the city's limits.

A new well, 314 feet in depth, has been drilled, and an underground storage tank with 5000-barrel capacity will be installed to replace the old overhead gravity tank that has proved inadequate for the community's growing population. The new tank will be kept under constant pressure.

Present plans of the McFarland Mutual Water Company call for the installation of another tank for every 500-person increase in population.

In the new well an 11-stage pressure pump obtained from Fred Gunther, Bakersfield, will be installed, replacing the old pump in the city's old 154-foot well.

MOONLIGHT HAS BIG SILVER VEIN

Important Discovery Is Reported by Syndicate of New Owners

Traced and cross-cut for a distance of 500 feet a 10-foot vein carrying an average of \$27.60 ton in silver value has been outlined by the new company of southern California capitalists in charge of the Moonlight Mining Company property near Wild Rose mine in the Panamint district north of Kern county.

Announcement of the size of the vein was made in Bakersfield yesterday by R. Rea, engineer in charge of the development work on the mine. Mr. Rea plans to start a working shaft on the property and develop and block out ore for milling. Tests will be made in the near future to determine the best method of treating the ore.

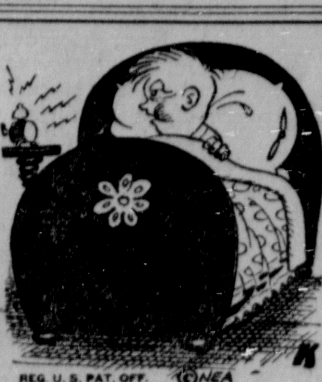
In doing preliminary work Mr. Rea says that he followed closely maps and suggestions of R. L. Gilmore, local mining engineer for the company. I believe this ore is in a new vein which is 1000 feet in length, says Mr. Rea.

LOCAL MEN SUBSCRIBE TO MINE SYNDICATE

A sum totalling \$80,296 has been subscribed by Kern county residents and others for the King Midas Gold Mines Syndicate, according to a copy of articles of incorporation filed at the county clerk's office here.

PIONEER KERN MINER IS CALLED BY DEATH

Thomas McCarthy, 62, pioneer mining man of Kern county, died last Thursday at La Mesa, according to a report made to The Californian by Attorney W. A. McGinn of Bakersfield today. Mr. McCarthy was a native of North Lewisburg, Ohio, and was a pioneer in the development of the mining industry in Kern county.



No matter what kind of real estate you are planning to purchase—house, lot, apartment, business, industrial, or ranch—you will find a large list of today's best buys advertised in The Californian Classified Ad Section.

Make your selection now—DON'T BE LATE!