



► **2020 CENSUS AND
TRUSTEE AREA
REDISTRICTING**

KERN HIGH SCHOOL DISTRICT

NOVEMBER 1, 2021



**COOPERATIVE
STRATEGIES**

ASSESS • PLAN • FUND • BUILD

▶ DISTRICT DEMOGRAPHICS
2020 CENSUS DATA

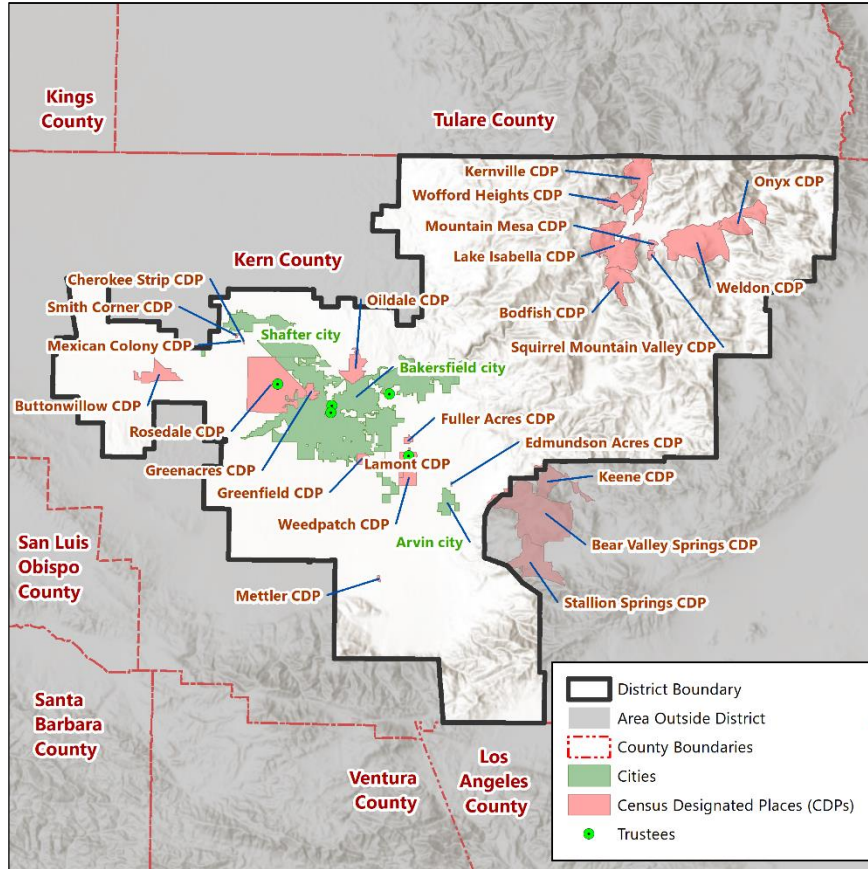


- Validated redistricting data was finalized by the California Department of Finance on September 27, 2021.
- This data showed substantial changes in the area served by Kern High School District from 2010 to 2020, including:
 - Overall population growth of 69,338 (11.6%)
 - Total Variance of 14.4% based on 2020 Census (*Out of Compliance*)

Trustee Area	2010 Census		2020 Census		Change	
	Total	Variance	Total	Variance	Population	Percent
Trustee Area 1	123,116	3.2%	145,398	9.2%	22,282	18.1%
Trustee Area 2	120,098	0.7%	126,508	-5.0%	6,410	5.3%
Trustee Area 3	117,168	-1.8%	127,999	-3.9%	10,831	9.2%
Trustee Area 4	115,236	-3.4%	126,279	-5.2%	11,043	9.6%
Trustee Area 5	120,733	1.2%	139,505	4.8%	18,772	15.5%
Total Population	596,351	6.6%	665,689	14.4%	69,338	11.6%

▶ DISTRICT DEMOGRAPHICS

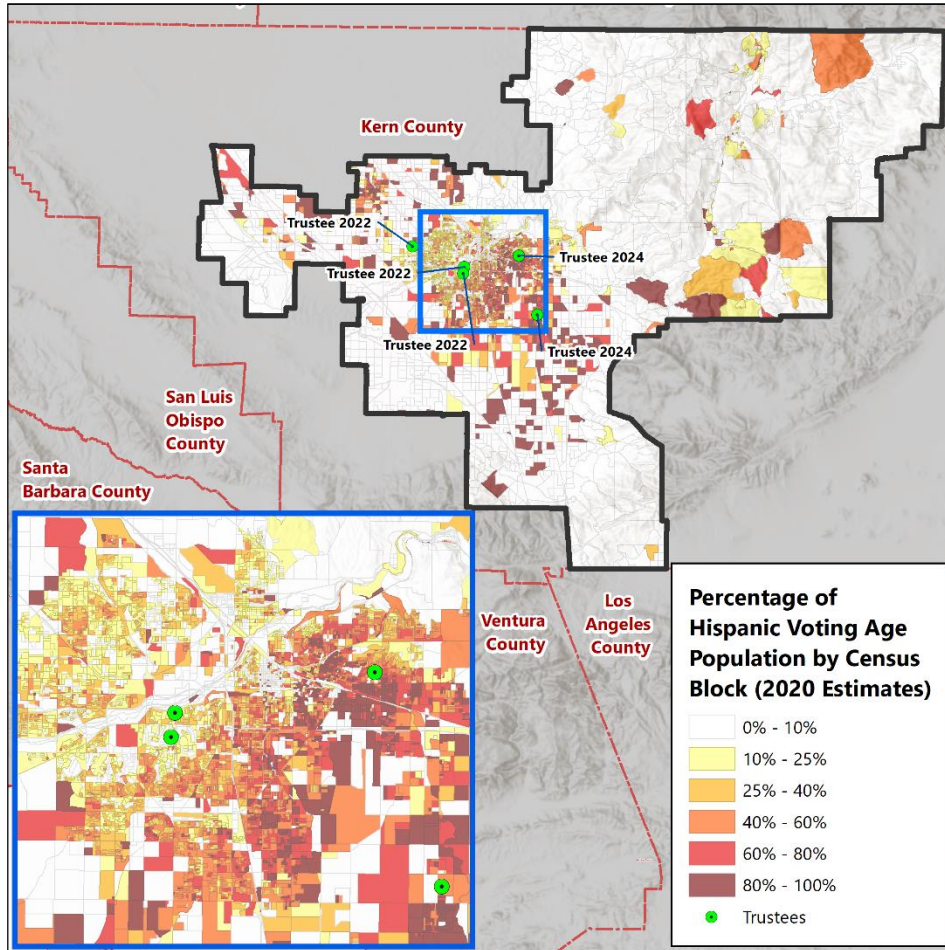
2020 CENSUS DATA



Population	Total Population		Age 18 and over	
	Total	%	Total	%
Hispanic/Latino	373,721	56.1%	244,248	51.7%
White	197,680	29.7%	159,214	33.7%
Black / African American	33,347	5.0%	23,659	5.0%
American Indian /Alaska Native	3,899	0.6%	3,032	0.6%
Asian	33,107	5.0%	26,093	5.5%
Native Hawaiian / Pacific Islander	671	0.1%	505	0.1%
Other	3,531	0.5%	2,322	0.5%
Two or More Races	19,733	3.0%	13,101	2.8%
Total	665,689	100%	472,174	100%

*Source: Statewide 2021 Redistricting Database (Census 2020)

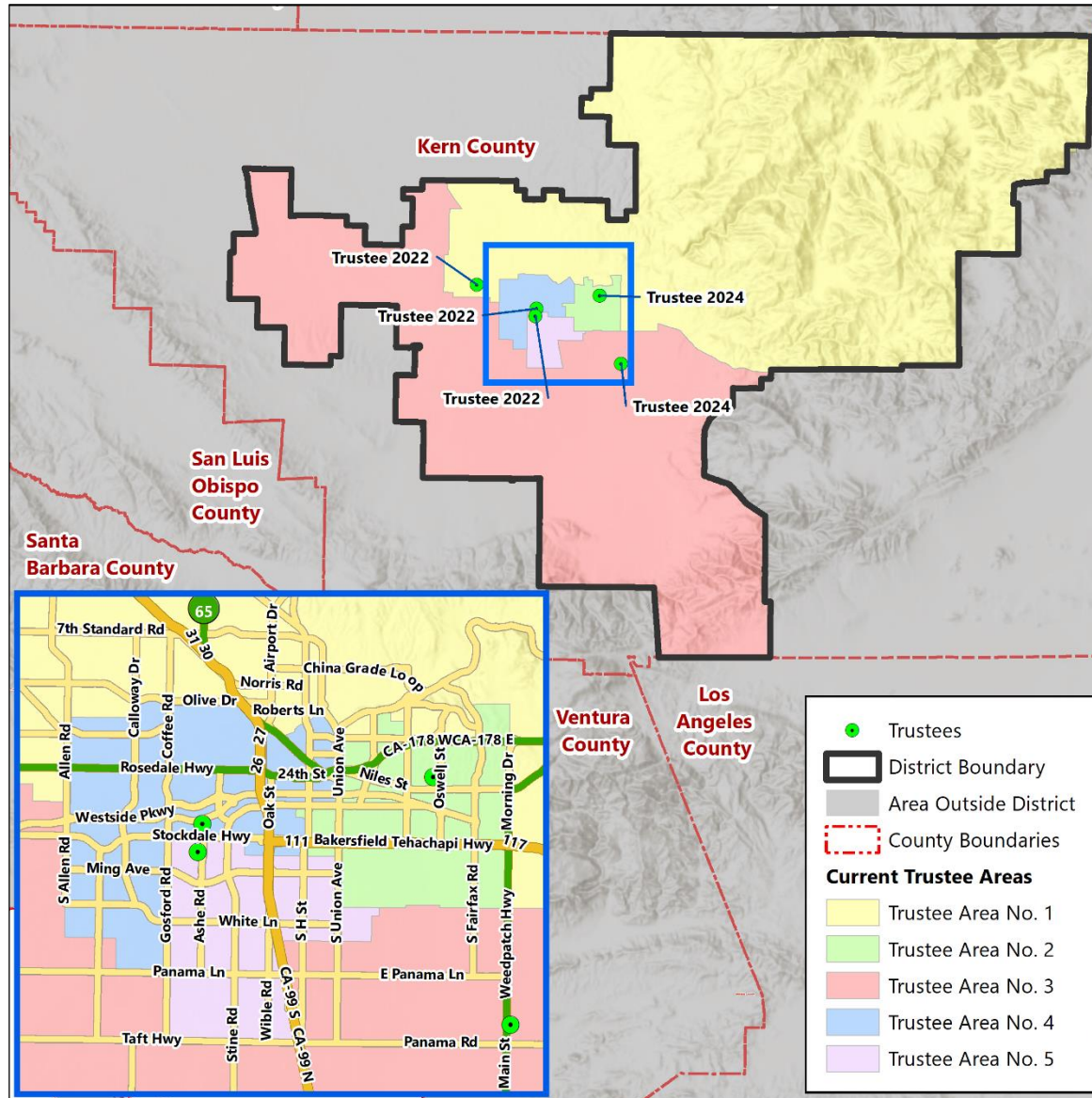
► DISTRICT DEMOGRAPHICS
CITIZEN VOTING AGE POPULATION ESTIMATES



Population	2015-2019 CVAP	
	Total	%
Hispanic/Latino	157,329	42.1%
White	167,608	44.9%
Black / African American	23,474	6.3%
American Indian/ Alaska Native	2,033	0.5%
Asian	16,604	4.4%
Native Hawaiian/ Pacific Islander	458	0.1%
Two or More Races	6,039	1.6%
Total	373,545	100%

*Source: American Community Survey, 2015-2019 Data

▶ CURRENT TRUSTEE AREAS



► CURRENT TRUSTEE AREAS

Census 2020 Total Population:		665,689		Ideal Trustee Area Size:		133,138		Total Variance:		14.4%	
TRUSTEE AREA	Trustee Area 1		Trustee Area 2		Trustee Area 3		Trustee Area 4		Trustee Area 5		
TP* vs. CVAP**	TP	CVAP	TP	CVAP	TP	CVAP	TP	CVAP	TP	CVAP	
Population	145,398	94,302	126,508	61,247	127,999	57,928	126,279	82,660	139,505	77,408	
Population Variance	9.2%	N/A	-5.0%	N/A	-3.9%	N/A	-5.2%	N/A	4.8%	N/A	
Hispanic/Latino	35.0%	23.9%	77.3%	63.6%	76.0%	62.0%	36.6%	29.1%	58.4%	46.3%	
White	53.0%	68.0%	12.2%	22.7%	15.9%	30.1%	43.6%	53.8%	21.3%	35.7%	
Black/African American	2.4%	2.1%	6.7%	10.4%	2.3%	3.0%	5.6%	7.0%	8.1%	9.9%	
American Indian/Alaska Native	0.9%	0.8%	0.6%	0.7%	0.3%	0.3%	0.6%	0.5%	0.5%	0.3%	
Asian	3.6%	3.1%	0.9%	1.7%	3.4%	3.5%	8.6%	7.2%	8.3%	6.1%	
Native Hawaiian/Other Pacific Islander	0.1%	0.1%	0.1%	0.0%	0.0%	0.2%	0.1%	0.1%	0.1%	0.1%	
Other	0.5%	N/A	0.4%	N/A	0.4%	N/A	0.6%	N/A	0.6%	N/A	
Two or More Races	4.4%	2.0%	1.8%	0.9%	1.6%	0.8%	4.2%	2.3%	2.6%	1.6%	

*Total Population; Source: Redistricting Database for California, Published by Statewide Database on September 20, 2021

**Citizen Voting Age Population (CVAP); Source: American Community Survey, 2015-2019 Data

▶ TRUSTEE AREA PROCESS

DATE	ACTIVITY
November 1, 2021	Board Meeting: Presentation on Evaluation of Existing Voting Areas Review Initial Scenarios
November/December 2021	If required, Cooperative Strategies revises scenarios based on Board and Public Input
December 13, 2021	Board Meeting: Review Revised Scenarios (if req'd) Adopt Final Trustee Area Map.
January 2022	Cooperative Strategies submits updated Trustee Areas map to County Registrar of Voters.
November 8, 2022	First Election Held Utilizing Trustee Areas

▶ CONSIDERATIONS IN TRUSTEE AREAS



Each area shall contain nearly equal number of inhabitants



Follow man-made and natural geographic features, as much as possible



Drawn to comply with the Federal Voting Rights Act



Respect incumbency, if possible



Compact and contiguous, as much as possible

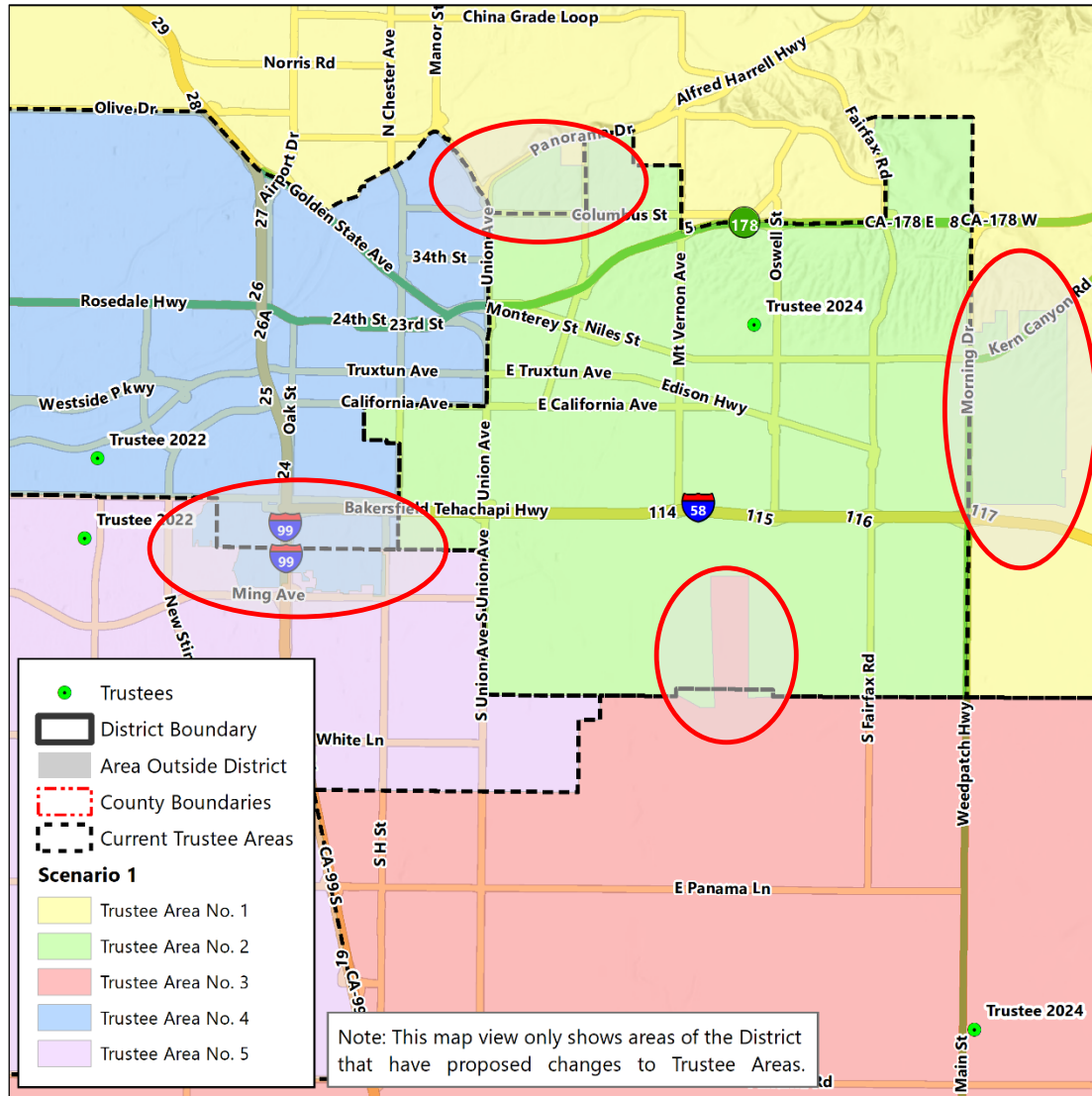


Other local considerations (i.e., school boundaries, locations of school sites)



Respect communities of interest, as much as possible

▶ CONCEPTUAL TRUSTEE AREAS SCENARIO 1

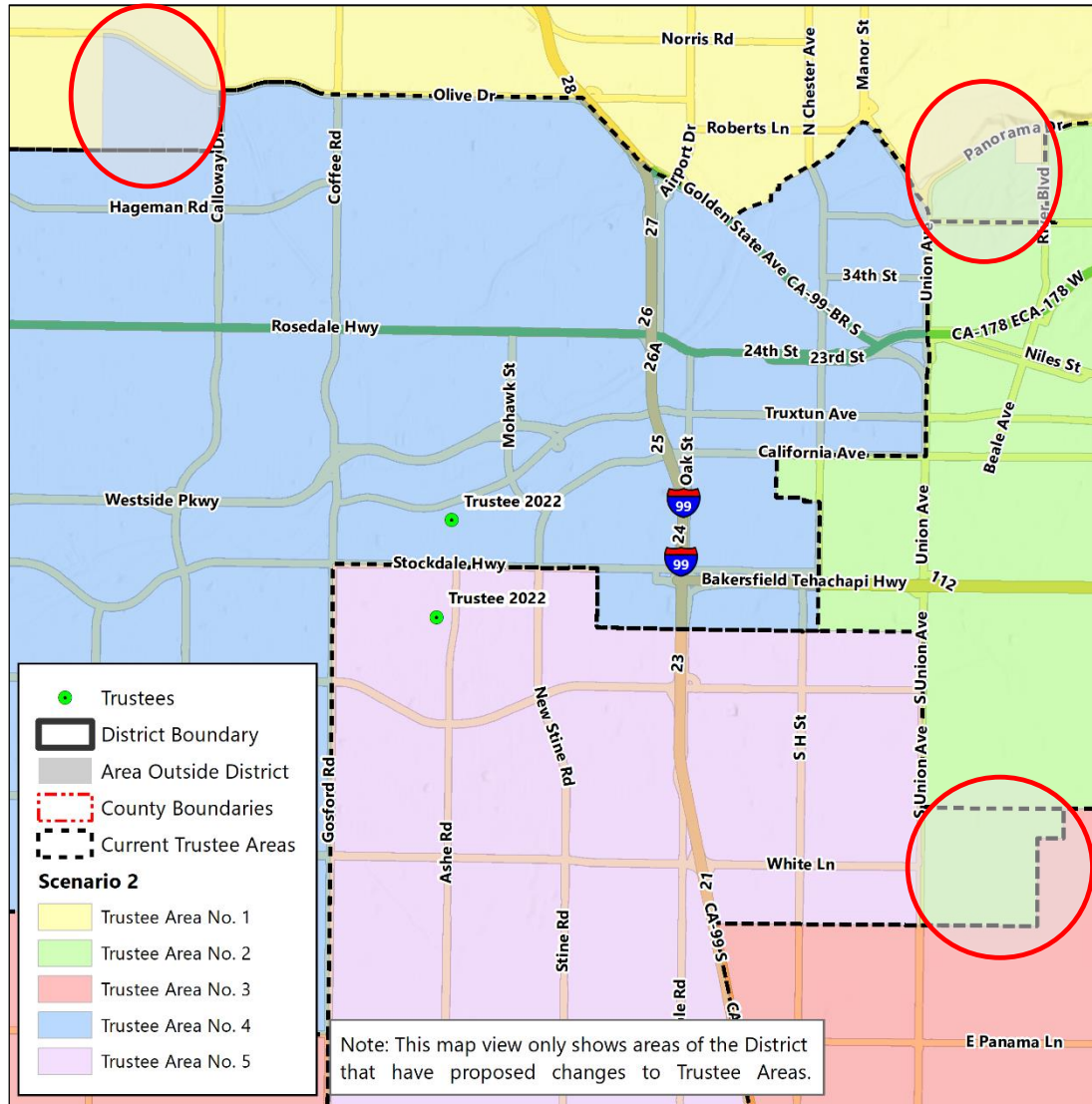


► **DEMOGRAPHICS**
SCENARIO 1

Total Population:	665,689	Ideal Trustee Area Size:	133,138	Variance:	7.7%
--------------------------	----------------	---------------------------------	----------------	------------------	-------------

TRUSTEE AREA	Trustee Area 1		Trustee Area 2		Trustee Area 3		Trustee Area 4		Trustee Area 5	
TP* vs. CVAP**	TP	CVAP	TP	CVAP	TP	CVAP	TP	CVAP	TP	CVAP
Population	133,677	88,147	138,229	67,402	127,999	57,928	130,986	84,956	134,798	75,112
Population Variance	0.4%	N/A	3.8%	N/A	-3.9%	N/A	-1.6%	N/A	1.2%	N/A
Hispanic/Latino	31.9%	22.2%	76.8%	62.1%	76.0%	62.0%	37.7%	29.5%	58.1%	46.4%
White	55.6%	69.3%	13.1%	25.2%	15.9%	30.1%	42.8%	53.7%	21.3%	35.3%
Black/African American	2.5%	2.2%	6.2%	9.5%	2.3%	3.0%	5.6%	6.9%	8.2%	10.1%
American Indian/Alaska Native	1.0%	0.9%	0.6%	0.6%	0.3%	0.3%	0.6%	0.5%	0.5%	0.3%
Asian	3.8%	3.2%	0.9%	1.6%	3.4%	3.5%	8.3%	7.0%	8.5%	6.2%
Native Hawaiian/Other Pacific Islander	0.1%	0.1%	0.1%	0.0%	0.0%	0.2%	0.1%	0.1%	0.1%	0.1%
Other	0.5%	0.0%	0.4%	0.0%	0.4%	0.0%	0.6%	0.0%	0.6%	0.0%
Two or More Races	4.6%	2.1%	1.9%	0.8%	1.6%	0.8%	4.1%	2.2%	2.7%	1.7%

▶ CONCEPTUAL TRUSTEE AREAS SCENARIO 2



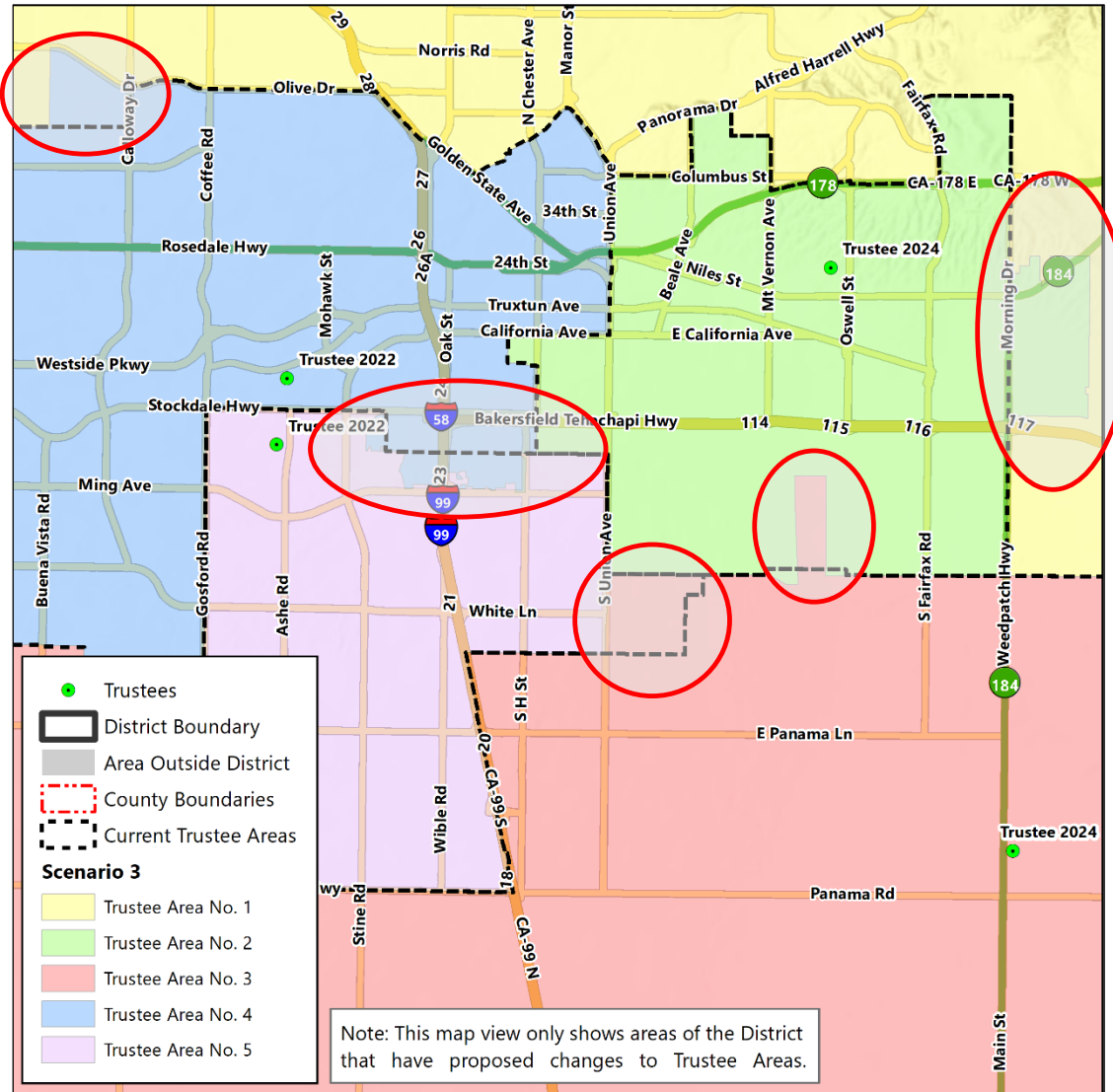
► **DEMOGRAPHICS**
SCENARIO 2

Total Population:	665,689	Ideal Trustee Area Size:	133,138	Variance:	7.7%
--------------------------	----------------	---------------------------------	----------------	------------------	-------------

TRUSTEE AREA	Trustee Area 1		Trustee Area 2		Trustee Area 3		Trustee Area 4		Trustee Area 5	
TP* vs. CVAP**	TP	CVAP	TP	CVAP	TP	CVAP	TP	CVAP	TP	CVAP
Population	138,212	89,135	130,897	63,882	127,999	57,928	130,950	85,838	137,631	76,762
Population Variance	3.8%	N/A	-1.7%	N/A	-3.9%	N/A	-1.6%	N/A	3.4%	N/A
Hispanic/Latino	34.9%	23.4%	76.8%	62.4%	76.0%	62.0%	36.4%	29.2%	58.1%	46.4%
White	53.1%	68.3%	12.7%	24.0%	15.9%	30.1%	44.1%	54.0%	21.5%	35.9%
Black/African American	2.4%	2.1%	6.6%	10.4%	2.3%	3.0%	5.5%	6.8%	8.2%	9.6%
American Indian/Alaska Native	1.0%	0.9%	0.6%	0.6%	0.3%	0.3%	0.6%	0.5%	0.5%	0.3%
Asian	3.6%	3.1%	0.9%	1.6%	3.4%	3.5%	8.4%	7.1%	8.4%	6.1%
Native Hawaiian/Other Pacific Islander	0.1%	0.1%	0.1%	0.0%	0.0%	0.2%	0.1%	0.1%	0.1%	0.1%
Other	0.5%	0.0%	0.4%	0.0%	0.4%	0.0%	0.6%	0.0%	0.6%	0.0%
Two or More Races	4.4%	2.1%	1.8%	0.9%	1.6%	0.8%	4.2%	2.2%	2.7%	1.6%

▶ CONCEPTUAL TRUSTEE AREAS

SCENARIO 3



► **DEMOGRAPHICS**
SCENARIO 3

Total Population:	665,689	Ideal Trustee Area Size:	133,138	Variance:	4.4%
--------------------------	----------------	---------------------------------	----------------	------------------	-------------

TRUSTEE AREA	Trustee Area 1		Trustee Area 2		Trustee Area 3		Trustee Area 4		Trustee Area 5	
TP* vs. CVAP**	TP	CVAP	TP	CVAP	TP	CVAP	TP	CVAP	TP	CVAP
Population	131,507	86,951	135,714	65,413	129,873	58,574	135,671	88,141	132,924	74,466
Population Variance	-1.2%	N/A	1.9%	N/A	-2.5%	N/A	1.9%	N/A	-0.2%	N/A
Hispanic/Latino	32.2%	22.1%	77.3%	63.1%	76.1%	61.8%	37.5%	29.6%	57.8%	46.4%
White	55.4%	69.6%	12.6%	23.9%	15.8%	29.9%	43.3%	53.9%	21.5%	35.5%
Black/African American	2.5%	2.1%	6.3%	9.8%	2.4%	3.4%	5.5%	6.8%	8.2%	9.8%
American Indian/Alaska Native	1.0%	0.9%	0.6%	0.6%	0.3%	0.3%	0.6%	0.5%	0.4%	0.3%
Asian	3.8%	3.1%	0.9%	1.7%	3.4%	3.5%	8.2%	6.9%	8.6%	6.3%
Native Hawaiian/Other Pacific Islander	0.1%	0.1%	0.1%	0.0%	0.0%	0.2%	0.1%	0.1%	0.1%	0.1%
Other	0.5%	0.0%	0.4%	0.0%	0.4%	0.0%	0.6%	0.0%	0.6%	0.0%
Two or More Races	4.5%	2.1%	1.8%	0.9%	1.6%	0.8%	4.1%	2.1%	2.7%	1.7%



QUESTIONS

A row of yellow school buses is parked in a grassy field. The buses are slightly out of focus, and the scene is overlaid with a large, semi-transparent, stylized letter 'S' graphic. The sky is blue with scattered white clouds.