

# \$250,000 Cotton Theft Ring Smashed

**REMARK**  
By MARK MORRIS  
Castro's thoughts: You nice Americans come across with your dollars—but you Gringos don't come across to Cuba with your suggestions.

## The Bakersfield Californian

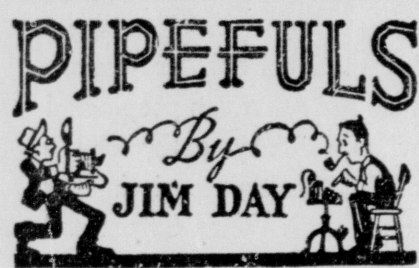
Mantle Dissatisfied  
With Offered Pact;  
See Sports, Page 31

LOCAL SECTION

BAKERSFIELD, CALIFORNIA, THURSDAY, JANUARY 22, 1959

PAGES 21 TO 40

# City May Halt Work on New Auditorium



Not only a symbol of the continuing vigilance of the U.S. Forest Service, but one of the most important instrumentalities in fire protection is the towering lookout station. These towers mounted on mountain tops, cliffs, high vantage points wherever you find forest service land enable lookouts with powerful binoculars to sweep the arboreal horizons for sign of fires.

This year Southern California has had a particularly difficult fire season for the scant rainfall and warm weather have made almost half of the state tinder dry. The services of the fire lookouts are more important than ever these days when the fire hazards worry forest service officials throughout the state.

### Old Tree Lookout

This week I was talking to A. A. Allen, one of the pioneer forest service rangers here—he served in our Sierran regions many years ago and he showed

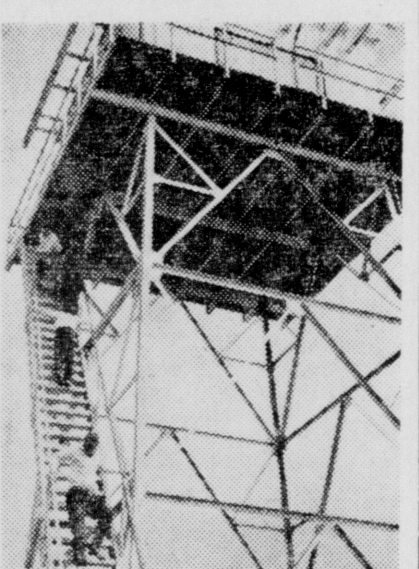


me a picture of the first tree lookout station on Breckenridge Mountain. The station surmounted the 7,579-foot summit.

In 1914 one of the fire lookouts employed by A. A. Allen's brother, Lloyd Allen, who was a district ranger here then, constructed a small one-man shelter on the top of a huge pine. The small lookout hut was 87 feet above the ground. It took a man with some courage and considerable agility to reach the "booth" on top of the tree. Access to this lookout post at the tree top was achieved by climbing the heavy trunk into which small spikes had been affixed. A slip or mischance would have killed the lookout but there were no accidents.

### Modern Tower

From the tree top on high Breckenridge Mountain the fire guard had a good view of the



rugged forest terrain and with his telephone he could alert fire suppression crews. I thought it would be interesting to show a picture of this old tree-top lookout station and contrast it with the modern lookout tower which annually attracts many visitors from Bakersfield and other county cities as they make trips to the Breckenridge region.

### Williamson Named to Assembly Committees

Kern Assemblyman John C. Williamson has been appointed to the Assembly Committee on Water. As a result of this appointment Kern County will be represented for the first time since 1950 on the Assembly standing committee dealing with water problems.

## State Nears End of Case Against Cox

### Witnesses Tell of Attempts to Locate Victim

Dist. Atty. Kit Nelson said today he may complete the prosecution's case tomorrow against Cleon Cox, 27, Rosedale teacher, charged with the love-triangle slaying of fellow teacher Iler Molhook.

Nelson is expected to call witnesses today who will testify about events immediately following the early morning shooting in Cox's Kentucky Street apartment.

The 10 witnesses called yesterday related the defendant's attempts and success in locating Molhook in South Gate, where the latter had moved after he and Cox's wife, Peggy, were asked to resign from teaching positions at the Rosedale Elementary School where the trio was employed.

Cox is accused of forcing his 27-year-old former close friend to return with him to Bakersfield where he shot him after Cox's wife refused by telephone to consider reconciliation during the early morning hours of Nov. 13.

### 3 Southland Witnesses

Prosecution witnesses called yesterday included three Southland men who attended Bakersfield College with the defendant and Molhook. James Tallis shared a South Gate apartment with Molhook and he related how Cox had knocked on the apartment door about 2 a.m. Nov. 3 in search of Molhook.

Tallis said he went back to bed and did not hear the conversation between his roommate and Cox but that Molhook returned to the bedroom long enough to dress.

On cross examination, Tallis was asked by defense attorney Morris B. Chain if Molhook appeared to be frightened.

"I can't say that he did," replied the witness.

Tallis said he last saw Molhook

Continued on Next Page

## Frog Farm Asks \$100,000 for 100,000 Frogs

The operators of a Lamont area frog farm have filed a \$100,000 suit for damages in the deaths of 100,000 frogs last July 8.

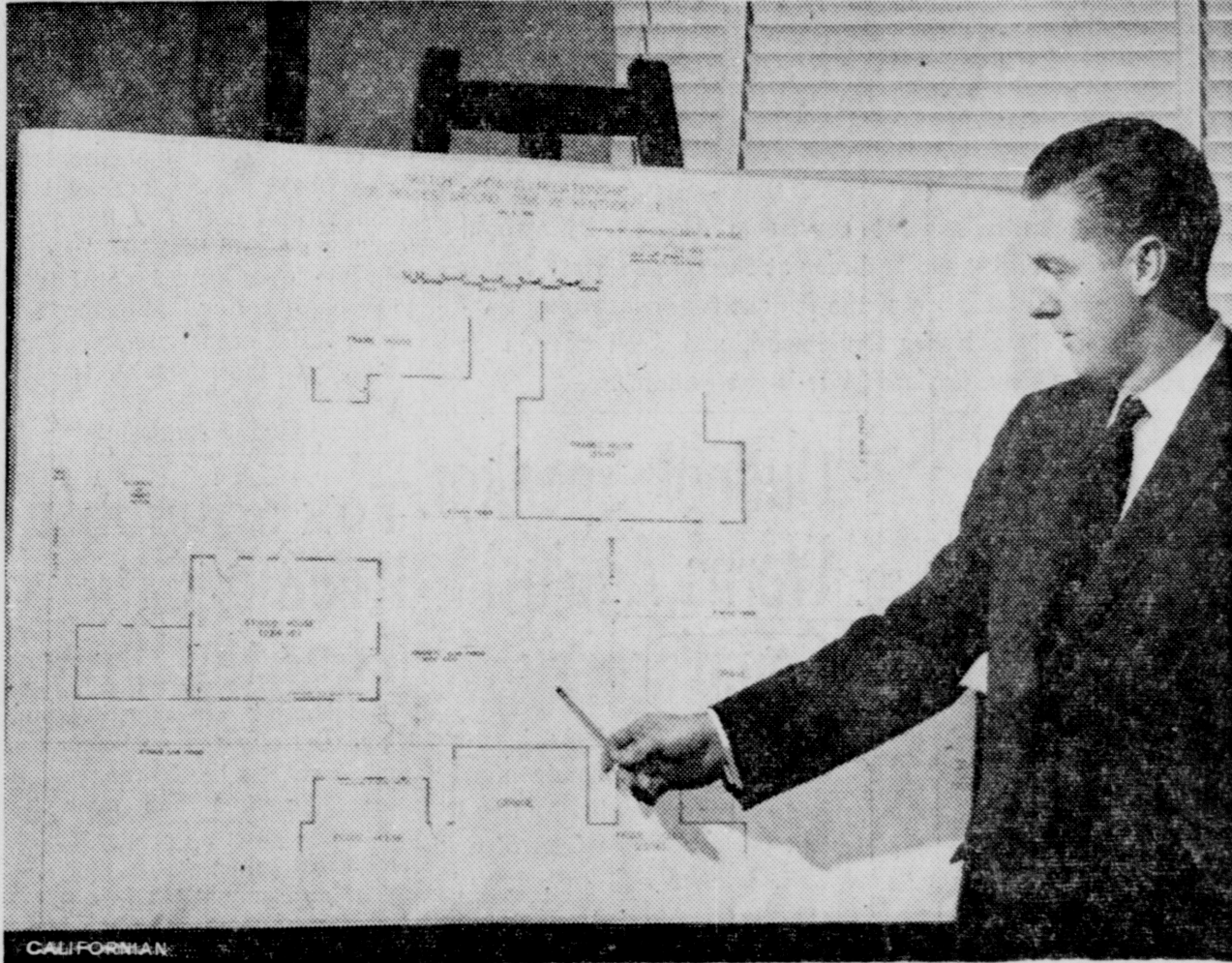
Named as defendants in the Superior Court action are the Kern County Mosquito Abatement District and its agent, John B. Martinto. The plaintiffs, Cecil Lowry and Claude Tripp, doing business as C. C. Frog Farm, Weed Patch Highway, have retained the services of the law firm of Dorris, Fleharty and Underhill.

The complaint alleges Martinto entered the area where the partners are breeding frogs on four ponds and sprayed it "with chemical substances, toxic and poisonous." Atty. Thomas Underhill said the district agent did not give his clients the proper notice under the summary abatement clause of the California Health and Safety Code and therefore is liable for damages.

The frogs, progenies of Louisiana imports, are a large variety, used (1) by laboratories for pregnancy tests and (2) by gourmets with a taste for frog legs. Attorneys said the frog farmers complied with the law governing political districts and served notice of claim on Harold Fox, secretary for the Kern County Mosquito Abatement District, three months ago.



**COX EXAMINES MURDER INDICTMENT**—Cleon Cox, 27, center, is flanked by his attorney, Morris B. Chain, right, and private investigator Leonard Winters as he examines murder indictment which brought him to trial for Nov. 13 fatal shooting of fellow school teacher Iler Molhook. Trial is in its fourth day in court of Superior Judge Norman F. Main.



**PROSECUTING MURDER CASE**—Dist. Atty. Kit Nelson, conducting the prosecution against murder suspect Cleon Cox, pinpoints for benefit of the Superior Court jury the location of the defendant's Kentucky Street apartment where Iler Molhook, 27, was fatally shot. With trial now in fourth day, Nelson indicated he expects to complete prosecution's case tomorrow. The case may be submitted to the jury next Wednesday or Thursday. If Cox is guilty, a second phase of the trial will determine the penalty—life imprisonment or death.

# Kern Economy to Hit New High



**BUSINESS OUTLOOK CONFERENCE**—A continued orderly improvement in economic conditions generally was seen for 1959 by Charles Detoy (standing), partner in the firm of Coldwell, Banker and Co., Los Angeles, who addressed the second annual Kern County Business Outlook Conference yesterday. Seated at the head table are: A. B. Newby, president of the Kern County Board of Trade, left, and Walter Kane, publisher of The Bakersfield Californian, who presided as executive chairman of the outlook parley. Approximately 250 Kern County business and civic leaders attended the county-wide conference to hear authoritative appraisals presented by a panel of eight informed businessmen.

## Population Gains to Lead Expansion

"Kern County's \$232,000,000 agricultural economy should be as good in 1959 as it was in 1958. . . ."

"The long-range real estate outlook in Kern County is excellent . . . Kern County will continue to grow, thus making land more in demand and higher in value. . . ."

"Kern County's industrial future is bright . . . Industry based on the county's agriculture will reach a higher level in 1959, mostly due to increased cotton acreage. . . ."

"With due regard for impending dangers, the Kern County oil industry should do about as well, revenue wise, in 1959 as it did last year . . . New wells should offset a major part of natural decline in old wells and an improved business climate should bolster sales of products. . . ."

### Eight Authorities

These were among the forecasts made yesterday at the second annual Kern County Business Outlook Conference by eight authorities who assayed the county's 1959 economic prospects. Approximately 250 civic and business leaders attended the county-wide parley sponsored by the Kern County Board of Trade at the Stockdale Golf and Country Club.

Signs generally point to another prosperous and prosperous 1959 business year in Kern County: This was the consensus of the panel of informed businessmen who evaluated the area-wide outlook.

Continued on Next Page

## Big Cotton Theft Ring Smashed

The sheriff's departments of Fresno and Kern counties today broke up a \$250,000 cotton theft ring that ranged up and down the San Joaquin Valley with the arrest of the alleged "fence" in Fresno, Sheriff LeRoy Galien announced.

Arrested and charged on five counts of receiving stolen property was Orodzo Rossi, manager of the Powers Cotton Gin in Fresno. Sheriff Galien said approximately \$20,000 worth of stolen cotton had been processed through the Powers gin in the past three months.

Rossi is the 15th man arrested

Continued on Next Page

## Truck-Vehicle Crash Injures Three Persons

An intersection collision on Edison Highway at 4:45 p.m., yesterday, resulted in critical injuries for Lena Rains, 48, 2320 Pictoria Dr., wife of Bakersfield restaurant owner Herman Rains, and their two children.

Taken to Kern General Hospital with their mother were Charlotte, 16, and Charles, 14, with major injuries. Mrs. Rains later was transferred to Cottage Hospital.

California Highway Patrol Officers Dwight Bell and C. Nelson said the Rains' sedan, southbound on Fairfax Road, entered onto Edison Highway directly in the path of an eastbound truck and trailer, operated by Kenneth Richard Handy, 46, Phoenix, Ariz.

The heavy truck smashed into the right side of the sedan, wedging it against the divider island at the intersection.

Driver of the truck and trailer escaped injuries.



**BROTHER, SISTER HURT**—The two Rains children, Charles, 14, and Charlotte, 16, were severely injured when the automobile in which they were passengers collided with a truck and trailer yesterday afternoon at the intersection of Fairfax Road and Edison Highway. Here attendants lift the bloodstained youths to stretchers.



**MOTHER CRITICALLY INJURED**—Highway Patrolman Dwight Bell, center, and two attendants attempt to lift Mrs. Lena Rains, 48, driver of the car, into the ambulance, after the collision. Mrs. Rains, wife of Herman Rains, Bakersfield barbecue chef, was taken to Kern General hospital and later transferred to Cottage Hospital.