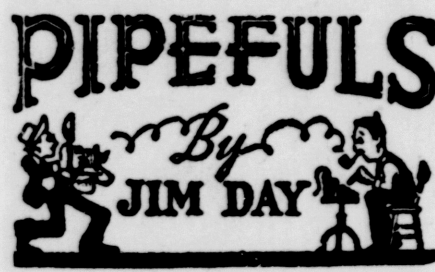


Trustees Back \$6,930,000 Bond Issue



One of the biggest "picnic parties," held annually in the United States, is the barbecue at the Kern County Fish and Game Protective Association.

This year's barbecue has been set for Sunday, April 21, at Hart Park, traditional setting for the huge gathering of hunters, fishermen, and well-wishers and their families.

Announcement of this year's date was made by Homer Harrison, president of the association. Officers of the association include R. E. Shepherd, Ray Morrison, Glenn Ware, Robert



HOMER HARRISON

Woltz and C. O. Todahl. There are more than 40 directors of the association and the following men, through their long and consistent work for the organization have been honored by life memberships:

John Durant, Ralph Edmonds, Homer Harrison, Robert Kelly, Cliff Kuentzel, John Loustalot, Walter Muller, Al Pearce, Louis Roux and Glenn Ware.

Barbecue, Too

Membership in the association is about the cheapest of any organization possible to join, a dollar and a half for adults and a buck for kids. The membership also entitles the holder to eat at the big barbecue dinner next month when various forms of entertainment are offered in addition to the barbecue meal.

Power Franchise

In making a brief outline of some of the activities and projects of the association last year, and continuing this year, Mr. Harrison said that a major one was the consideration of the power franchise and the flow of water in the river and flumes.

"It is the group's contention," said Mr. Harrison, "that more water, as it is available, should be allowed to flow down the river and not be diverted, in its entirety, to the power company flumes, thus affording more area along both sides of the river for recreational purposes as well as proper conditions for fish life and plant life required to give natural food to fish. Final decision on this will be made by the Federal Power Commission prior to the continuance of the franchise."

Game Bird Program

During the year the association released 1,500 chukars for the hunting season here and did so at locations permitting all interested hunters to have access without running into "no hunting" signs.

Mr. Harrison said that money from membership sales and donations enabled the big organization to purchase 2,000 chukars for release during 1963.

For many years here, the association, greatly experienced in preparing a barbecue for a huge crowd — anywhere from 5,000 to 12,000 persons — knows just how to go about the task.

As president of the association, Harrison has already made his major committee appointments for the "upcoming" party at Hart Park.

Preparing Barbecue

Steve Shanahan will be in charge of food preparation. Glenn Ware will have command of the ticket sale. Gary Bahnsen will have charge of traffic control and law enforcement, a big job for many thousands of persons who will be at the park.

Walt Gillette will set up the public address system. Ernie Rennie will have charge of concessions. **PIPEFULS—page 32**

Kern Trade Spurred by Isabella

Lake Isabella has averaged 780,000 user days per year since the reservoir was completed in 1954, according to the Kern County Board of Trade.

Citing a report by L. H. Cloyd, regional manager, California Department of Fish and Game, the Board of Trade newsletter shows that annual peaks at Isabella have been estimated at 1,200,000 user days.

Angler use on Isabella Lake amounts to about 625,000-650,000 angler days annually.

Approximately 80 per cent of the Kern River users come from Southern California counties, 11 per cent from Kern County and the other 9 per cent from nearby counties.

Tourism Growing

The Kern County Board of Trade says tourism has taken its place as one of Kern County's largest revenue-producing industries.

Lake Isabella-Kern River Valley visitors' use has boosted Kern's economy by over \$60 million since the inception of the Isabella reservoir, the Board said.

Lake Isabella is considered the nation's third most productive warm-water fishery, the report says.

The Board of Trade publication also shows that the State Division of Highways will spend \$10,387,000 for road construction and various rights-of-way acquisition in 1963. **see KERN—page 32**

City to Hire Auditorium Stage Expert

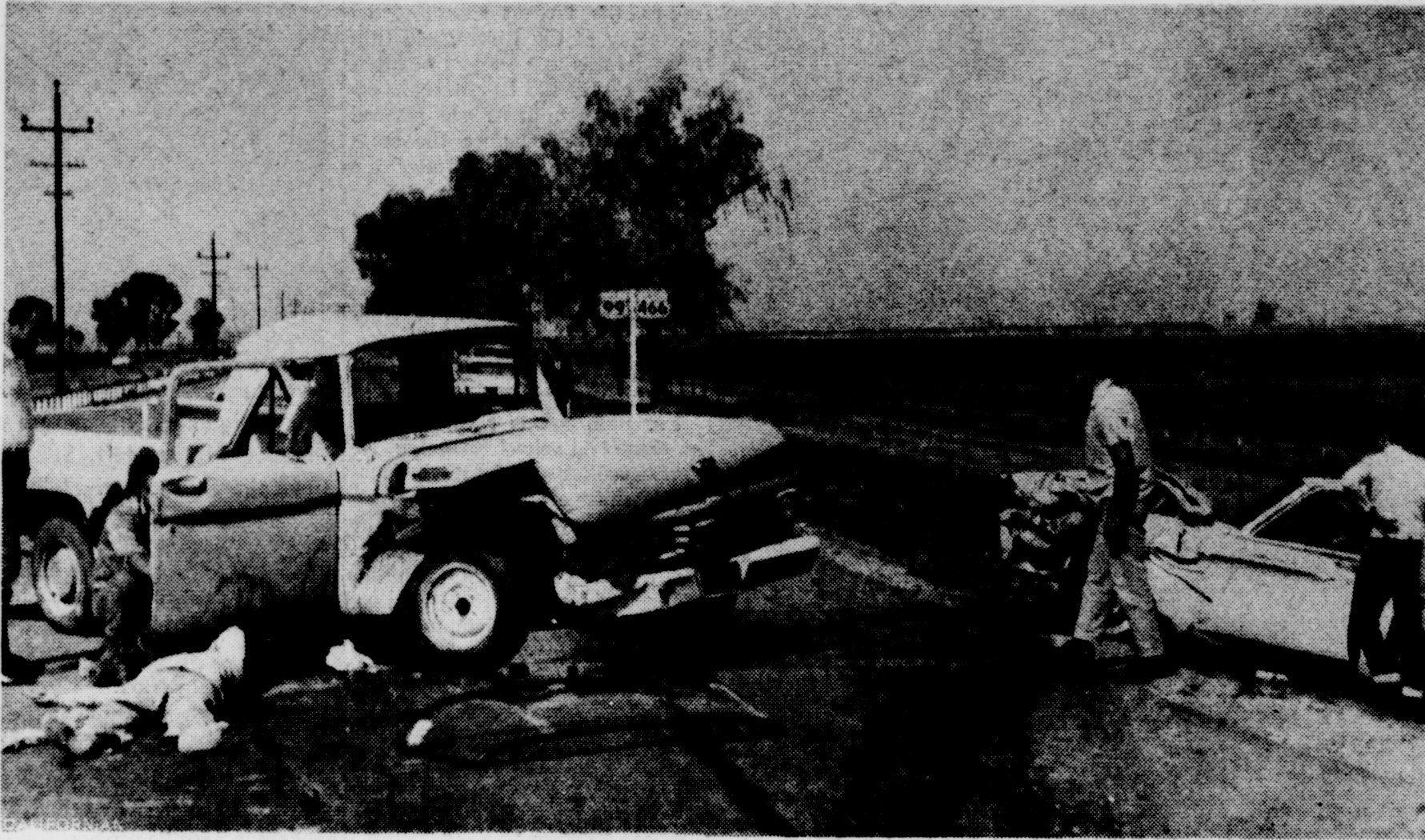
The City of Bakersfield will advertise for a stage manager to operate sound and lighting equipment at the civic auditorium at a beginning salary of \$531 a month.

The City Council approved the position last night after receiving recommendations for the job specifications from the civil service commission.

Auditorium Manager Irving Ducoff said the city had \$800,000 invested in the auditorium's sound and lighting systems and some civic organizations have expressed dissatisfaction in their operation and cost.

Ducoff said the Trade Club and the Metropolitan Dinner Club protested the cost charged by the city for the sound and lighting systems.

He said that it would be possible to dispense with the charges to civic groups for a part-time sound and lighting technician, but added the city would charge \$14 for the employee's time for a four-hour performance sponsored by professional promotion.



One man was killed and three other persons injured yesterday when a pickup driving eastbound from Kimberlina Road pulled in front of a northbound station wagon on U.S. 99 approximately 18 miles north of Bakersfield. The injured

pickup driver, Jose Escamilla, 63, is shown lying on the pavement. He was pronounced dead on arrival at Kern General Hospital.

City 'Left Out' in Planning for New Interchange

The City of Bakersfield did not have much to say about the placement of an interchange at the intersection of California Avenue and the new Highway 99 bypass freeway, Director of Public Works Harold Bergen told the City Council last night.

Bergen's statement followed one by Councilman Richard Stiern who reported residents on California Avenue and in its vicinity have expressed their concern as to what will happen to the street's traffic pattern when the freeway is opened. This concern includes increased truck traffic on the street, he said.

More Trucks

Bergen said that there might be increased use of the street by heavy trucks during the interim when the bypass is completed and the new Highway 466 freeway is constructed. This interim period could be from five to eight years, he said.

Bergen said that the freeway agreement with the state calling for an interchange at California Avenue rather than Truxtun Avenue was signed by the County of Kern since the area was outside of the city's corporate limits. He said that city officials had wished that the interchange be built to tie into Truxtun Avenue since that street was scheduled for improvement that would link it with Beale Avenue. The Truxtun-Beale improvements have been completed, he added.

Bergen said that the city had a difficult enough time in obtaining state agreement to construct an underpass on the bypass to permit the extension of Truxtun Avenue to the west.

City Plans

Bergen said the decision was made four or five years ago. Now, the city is planning to **see 'LEFT OUT'—page 32**

New Plan to Speed Postal Deliveries

A rapid, four-hour mail service from sender to addressee in downtown Bakersfield will soon be instituted by the Post Office Department, Congressman Harlan Hagen announced.

Identified as Accelerated Business Collection and Delivery (ABCD), the service provides that any first class mail deposited in specially designated collection

mail boxes in the downtown area before 11 a.m. and addressed to a downtown address will be delivered before 3 p.m. the same day, Hagen said.

Service Confirmed

The proposed service was confirmed by Bakersfield Postmaster John E. Loustalot.

"The special collection boxes will be identified with decals carrying the letters 'ABCD,'" he said. "The one-day delivery will be made to all downtown addresses presently being serviced by two mail deliveries."

Actual starting date for the new service has not been set, Loustalot said, nor has it been determined where the ABCD collection boxes will be located. "We'll have to make a survey to determine that," he said.

Hagen said Bakersfield is among 275 U.S. cities that will get the new ABCD service, according to the program announced by Postmaster General J. Edward Day. He (Hagen) said the new service will cause little or no additional cost in the local post office.

To Provide Boxes

In some cases, Loustalot said, first class mail deposited in the special boxes by 11 a.m. will be **see PLAN—page 32**

KERN AIRPORT SYSTEM WILL BE PUBLICIZED

"Kern County — Hub of California Aerospace Industries," will be the theme of a brochure on Kern's airport system.

The County Airport Department and Board of Trade are collaborating on the feature to be circulated at the annual convention of the American Association of Airport Executives, May 5-8, in Fort Lauderdale, Fla.

Kern County will be represented at the meeting by aviation director Al Huber.

The airport executives convention offers an opportunity to promote airport-based industries in the county airport system, **see AIRPORT—page 32**

CONTRACTS ARE AWARDED

Work on \$350,000 Rebuilding Job Opens at Bakersfield Country Club

By BERT BATES

Work of remodeling the Bakersfield Country Club clubhouse is underway, country club officials said today. They said the job will cost \$350,000.

Eddy and Paynter, architects in charge of the project, said con-

tracts totaling \$335,000 have been let and completion of the project is expected by fall. The Bakersfield Country Club building committee has approved plans designed to give the Greater Bakersfield area one of the most modern country clubs in Southern California. The committee is comprised of George Belluomini, president; Gerald Hay, house chairman; John Kovacevich, Ben Sill, Glenn Ferguson, James Trino, Mrs. George Oliver, Mrs. C. Ray Holbrook, board members; and Bob Butler, club manager.

Let Contract

Riel and Terry, general contractors, received the general \$211,566 construction contract. This will include a men's locker room, now nearing completion, lavatory and shower rooms, a men's cardroom and men's bar.

Club facilities will include a new club and lounge area in the center of the building. The interior will be refurbished. The main entry to the clubhouse will be at the center of the building on the south side. This entrance will be served by a new driveway approaching from the east and con-

MEMORIAL GIFTS FOR JUDGE HOWDEN

As a result of many inquiries, the family of the late Superior Court Judge Gordon L. Howden has announced that those wishing to make a donation in his memory may contribute to the Memorial Fund of the YMCA.

Board Asks Only 1 New School Now

Trustees of the Kern County Union High School District Monday night adopted a "motion of intent" to call for a \$6,930,000 bond issue.

A formal resolution setting the date and other details of the bond election will be presented to the school board for action next Monday night.

The 52-member Citizens' Study Committee on Building Needs, through general chairman T. P. Jarvis, presented a report Jan. 28 proposing a \$9,800,000 bond issue. It recommended construction of two new high schools and additions to seven of the district's present high schools.

The \$6,930,000 bond issue will provide for only one new high school at this time, to house 2,000 students.

It also includes adjustments in constructing the new school, in the cost of site development, and estimated cost of furniture and equipment for the projects.

Projects Listed

As revised under the \$6,930,000 bond issue the proposed projects are as follows:

One new high school in the southwest Bakersfield area — \$3,430,000 (for 2,000 students).

Burroughs High School — \$358,000 for classroom building and study hall addition.

Kern Valley High School — \$333,000 for classroom and administration building, mechanical arts building, gymnasium locker room addition and relocation of present temporary buildings.

South High School — \$400,000 for lecture center for large-group instruction and performing arts.

East Bakersfield High School — **see SCHOOL BOND—page 32**

Potato Men to Advertise Early Spuds

Kern County potato growers will contribute about \$2,500 for a trade publication advertising campaign to let the nation know Kern's early potatoes will be ready to market about three weeks ahead of last season.

The announcement was made after a meeting of 60 growers, shippers and handlers last night at Bakersfield Inn.

Joe Phillips, Bakersfield potato handler presiding over the meeting, said it was called to determine the best method of alerting market channels throughout the United States and Canada of the early potato deal which will begin moving about April 8 from the Edison district, with heavy shipments after April 20.

The advertising campaign will be handled through the Potato Growers Association of California and Arizona, with plans for full-page advertisements in four suc-

see POTATO—page 32

Firm Seeks Lease on Parking Lots

The City Council will consider a Los Angeles firm's offer to lease five city-owned parking lots in downtown Bakersfield and operate a merchants' validation program so shoppers can use the lots at no expense.

The offer was made at last night's meeting of the Council by Channing C. Edington, president of Parking Consultants Corp. He said his company would guarantee to pay the city 10 per cent more than the five lots earned during the last complete fiscal year, 1961-62, or 50 per cent of the firm's revenue from the lots if this amount should prove to be greater.

In Conferences

Edington said his firm has engaged in conferences with Bakersfield groups and city officials for the last six months. He said parking revenue from the lots has decreased 20 per cent in the last three years.

Edington proposed leasing lots at 18th and K Streets, Truxtun Avenue and Eye Street, 20th and L streets, 17th and G streets and 22nd and Eye streets. He said the 18th and K street lot was the only one that merited employment of an attendant.

Edington said meters would be removed from the lots which would be attended by trained employees. During peak shopping seasons he said that the 18th and K streets lot should be attendant-controlled to provide "stacking" of cars. He said this could double a lot's capacity.

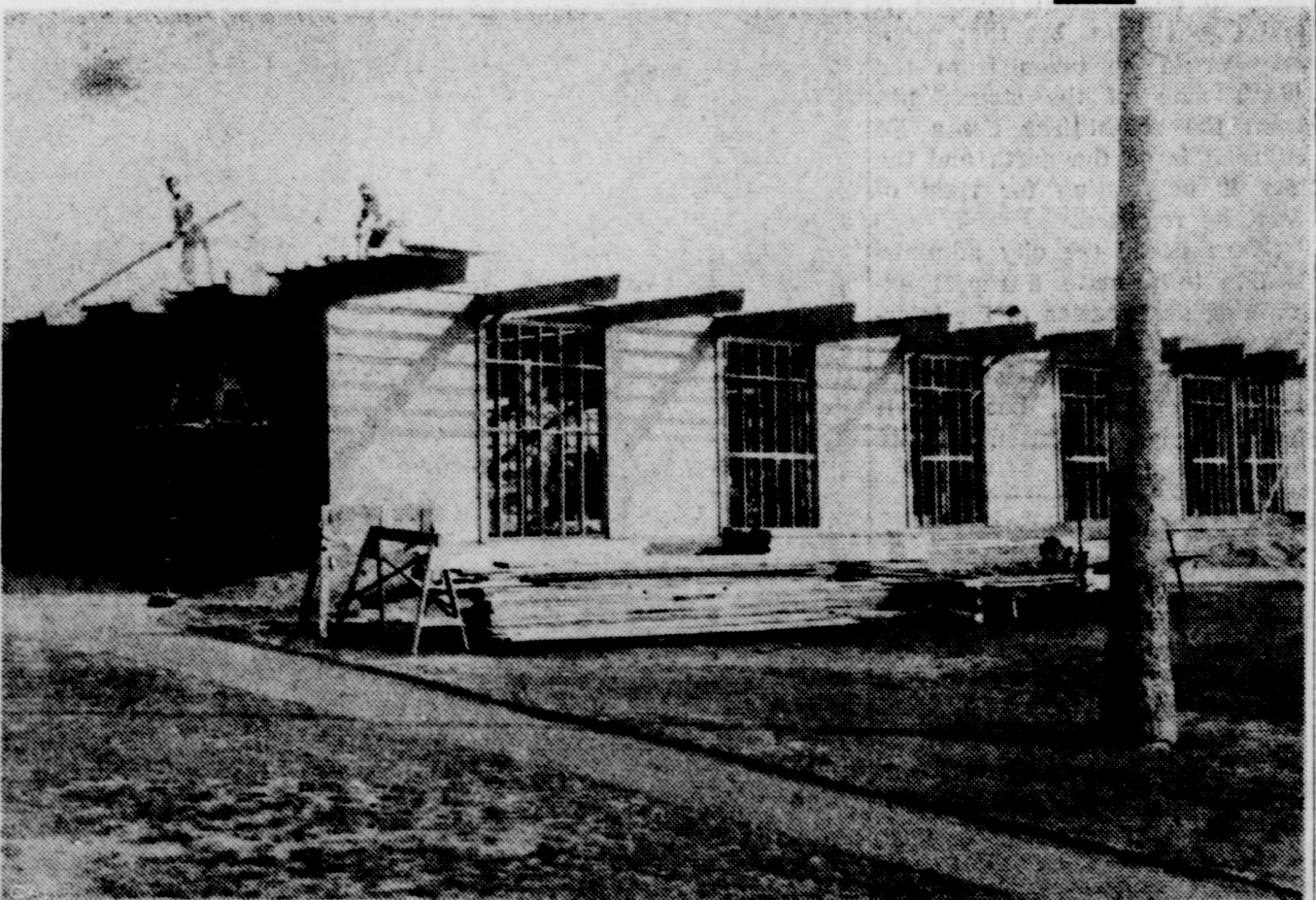
Five-Year Lease

Edington proposed a five-year lease under which his firm would spend \$7,500 to improve the lots, agree to join a park-and-shop plan calling for merchant validation of parking tickets, pay all operating expenses and maintain the lots, provide adequate insurance coverage. The city would be able to terminate the lease in 30 days.

Edington said his firm wanted to be able to sublease 10 per cent of a lot's area for shoe shine and other concessions.

Edington said he is also pre-

see PARKING—page 32



—Photo by Bert Bates

Work of installing new locker rooms at the Bakersfield Country Club is nearing completion. The locker room project is the first step in the \$350,000 remodeling job at the clubhouse. BCC committee members are spearheading the job designed to give Bakersfield one of the finest country club facilities in Southern California. The tentative target date for completion has been set for early fall.



—Photo by Bert Bates

Bakersfield Country Club representatives discuss the club's \$350,000 remodeling job with an architect and a contractor. Mapping plans for the work which will be completed in September are George Belluomini, BCC president; Gerald Hay, house chairman; Mrs. George Oliver, board member; Bob Butler, club manager; Bob Eddy, architect; Jack Andrade, L. B. McGowan, supply contractor, and John Kovacevich, board member.