

# Nevada Election Survey Project



## 2022 General Election Survey Results

### Topline Report

Dr. Jeremy Gelman

Dr. Christina Ladam

University of Nevada, Reno

# Contents

---

<b>1</b>	<b>Summary</b>	<b>2</b>
1.1	Methodology . . . . .	2
1.2	Acknowledgments . . . . .	3
<b>2</b>	<b>Election Interest and Turnout</b>	<b>4</b>
<b>3</b>	<b>Electoral Candidate Support</b>	<b>5</b>
<b>4</b>	<b>Ballot Measures</b>	<b>7</b>
<b>5</b>	<b>Nevada and the Nation</b>	<b>8</b>
5.1	Approval of Political Figures and Institutions . . . . .	8
<b>6</b>	<b>Election Administration</b>	<b>10</b>

# 1 SUMMARY

---

The Nevada Election Survey Project (NESP) conducts surveys of Nevadans on their political and policy views. In October 2022, researchers from the University of Nevada, Reno surveyed Nevadans ahead of the 2022 General Election. This survey was conducted prior to the early voting period and when mail-in ballots began arriving in Nevadans' mailboxes.

## 1.1 METHODOLOGY

The candidate support questions include nearly 600 Nevadans who report being registered to vote in Nevada and are very likely to vote in the upcoming election. The margin of error for those questions is +/- 4%.

*A note on likely voters:* To best estimate the population of likely voters, we focus on those who report that they are very likely to vote and are registered to vote in Nevada. This is in line with recommendations on how to best capture true likely voters. Additionally, this measure is weighted based on validated turnout measures in Nevada's 2018 and 2014 midterm elections. This accounts for respondents who report an intention to vote but who may not cast a ballot.

The entire survey sample consists of two samples. The first is a random sample of people 18 ages and older in Nevada. It consists of 1257 individual responses. By design, 30% of the sampling frame is of Hispanic/Latino Nevadans. The second sample was recruited via Facebook to those 18 and older living in Nevada. A Facebook advertisement displayed an invitation to share opinions, and people could click on the advertisement and were brought to the survey. We had a total of 108 responses. The summary findings presented here include both samples and have an overall margin of error of +/- 2.8%. The margin of error for subgroups is larger due to smaller sample sizes. Percentages may not sum to 100 due to rounding.

The survey instrument was developed by researchers Jeremy Gelman and Christina Ladam in fall 2022. The first sample was administered to a panel of Nevadans by the company Dynata between October 5-19, 2022 with the Facebook sample being collected concurrently. To generalize to the state of Nevada, we weighted the data based on demographics including age, race/ethnicity, income, education, gender, location in Nevada (Washoe, Clark or Other), and self-reported vote choice in the 2020 presidential election. Weight targets were calculated using the American Community Survey (ACS) and the state of Nevada voter file (as of October 23, 2022). We use these weights for all analyses unless otherwise noted. The median time it took a respondent to complete the survey was approximately 6.3 minutes. The authors can be contacted at [nesp@unr.edu](mailto:nesp@unr.edu).

## 1.2 ACKNOWLEDGMENTS

This project was funded by the University of Nevada, Reno's Office of Research and Innovation through the Dimensions Grant Program for liberal arts and journalism. You can learn more about the Nevada Election Survey Project at [nvelectionsurvey.com](https://nvelectionsurvey.com).

## 2 ELECTION INTEREST AND TURNOUT

We first look at the distributions of various election interest variables. This helps us to identify likely voters in the midterm election. These results suggest that Republican respondents are slightly more engaged than Democrats, and Independent voters are less likely to vote. These variables, specifically respondents' likelihood of voting and their registration status, help us to build our likely voter models.

**TABLE 1: "VOTING IN NEVADA'S STATEWIDE ELECTIONS ENDS ON NOVEMBER 8, 2022. HOW LIKELY ARE YOU TO VOTE IN THESE ELECTIONS?"**

	Total %	Democrats	Republicans	Independents
Very Likely	45	45	52	24
Likely	19	21	18	18
Somewhat Likely	15	15	15	17
Not Likely	8	7	6	17
Not at all Likely	13	12	9	24
<i>Observations</i>	<b>1338</b>	501	427	167

**TABLE 2: "HOW MUCH THOUGHT HAVE YOU GIVEN TO THE UPCOMING ELECTIONS HERE IN THE NEVADA?"**

	Total %	Democrats	Republicans	Independents
None at all	15	14	10	31
A little	20	19	18	22
A moderate amount	26	30	25	24
A lot	19	16	26	11
A great deal	20	20	22	12
<i>Observations</i>	<b>1345</b>	500	427	164

**TABLE 3: "ARE YOU REGISTERED TO VOTE IN NEVADA?"**

	Total %	Democrats	Republicans	Independents
Yes	76	80	79	62
No	22	20	21	34
Don't Know	2	<1	1	4
<i>Observations</i>	<b>1346</b>	502	426	164

### 3 ELECTORAL CANDIDATE SUPPORT

In our estimations of support for candidates, we rely only upon likely voters – those who indicate that they are very likely to vote, and that they are registered to vote in Nevada. These restrictions are supported by surveys and validated vote counts in previous midterm elections. Breakdowns by partisanship also only include likely voters.

**TABLE 4: “WHICH CANDIDATE FOR GOVERNOR OF NEVADA DO YOU PLAN ON VOTING FOR IN THE UPCOMING ELECTION?”**

	%Likely Voters	Democrats	Republicans	Independents
Steve Sisolak	47	90	8	25
Joe Lombardo	45	7	83	34
Some other candidate	4	1	3	21
Don't know	5	1	5	20
<i>Observations</i>	<b>585</b>	277	256	51

**TABLE 5: “WHICH CANDIDATE FOR U.S. SENATOR DO YOU PLAN ON VOTING FOR IN THE UPCOMING ELECTION?”**

	%Likely Voters	Democrats	Republicans	Independents
Catherine Cortez Masto	52	93	17	24
Adam Laxalt	39	5	74	32
Some other candidate	3	1	3	19
Don't know	5	1	6	24
<i>Observations</i>	<b>586</b>	278	256	51

**TABLE 6: “WHICH CANDIDATE FOR U.S. HOUSE OF REPRESENTATIVES DO YOU PLAN ON VOTING FOR IN THE UPCOMING ELECTION?”**

	%Likely Voters	Democrats	Republicans	Independents
Democratic Party's Candidate	45	92	6	7
Republican Party's Candidate	45	4	88	31
Some other candidate	2	0	1	21
Don't know	7	4	4	41
<i>Observations</i>	<b>582</b>	276	254	51

**TABLE 7: “WHICH CANDIDATE FOR NEVADA SECRETARY OF STATE DO YOU PLAN ON VOTING FOR IN THE UPCOMING ELECTION?”**

	<b>%Likely Voters</b>	Democrats	Republicans	Independents
Cisco Aguilar	<b>29</b>	49	11	18
Jim Marchant	<b>27</b>	9	46	23
Some other candidate	<b>5</b>	3	4	18
Don't know	<b>40</b>	39	40	41
<i>Observations</i>	<b>584</b>	275	256	51

**TABLE 8: “WHICH CANDIDATE FOR NEVADA ATTORNEY GENERAL DO YOU PLAN ON VOTING FOR IN THE UPCOMING ELECTION?”**

	<b>%Likely Voters</b>	Democrats	Republicans	Independents
Aaron Ford	<b>37</b>	56	22	28
Sigal Chattah	<b>25</b>	19	39	29
Some other candidate	<b>5</b>	4	4	14
Don't know	<b>32</b>	31	35	28
<i>Observations</i>	<b>576</b>	271	253	51

**TABLE 9: “WHICH CANDIDATE FOR NEVADA STATE TREASURER DO YOU PLAN ON VOTING FOR IN THE UPCOMING ELECTION?”**

	<b>%Likely Voters</b>	Democrats	Republicans	Independents
Zach Conine	<b>23</b>	36	13	6
Michele Fiore	<b>26</b>	17	37	19
Some other candidate	<b>7</b>	4	7	17
Don't know	<b>44</b>	43	42	58
<i>Observations</i>	<b>577</b>	237	250	50



## 4 BALLOT MEASURES

**TABLE 10:** QUESTION 1 ASKS VOTERS WHETHER THE NEVADA CONSTITUTION SHOULD BE AMENDED TO GUARANTEE EQUAL RIGHTS REGARDLESS “OF RACE, COLOR, CREED, SEX, SEXUAL ORIENTATION, GENDER IDENTITY OR EXPRESSION, AGE, DISABILITY, ANCESTRY, OR NATIONAL ORIGIN. IF THE ELECTION WERE HELD TODAY, HOW WOULD YOU VOTE ON THIS CONSTITUTIONAL AMENDMENT?

	<b>%Likely Voters</b>	Democrats	Republicans	Independents
Yes	<b>72</b>	85	54	56
No	<b>21</b>	7	35	35
Don't Know	<b>7</b>	8	1	8
<i>Observations</i>	<b>579</b>	274	252	51

**TABLE 11:** QUESTION 2 ASKS VOTERS WHETHER THE STATE MINIMUM WAGE SHOULD BE INCREMENTALLY INCREASED TO \$12 PER HOUR FOR ALL EMPLOYEES BY JULY 1, 2024, IF DIFFERENCES IN MINIMUM WAGES SHOULD BE REMOVED DEPENDING ON IF AN EMPLOYER PROVIDES HEALTH BENEFITS, AND IF ANNUAL ADJUSTMENTS BASED ON INFLATION SHOULD END. IF THE ELECTION WERE HELD TODAY, HOW WOULD YOU VOTE ON THIS CONSTITUTIONAL AMENDMENT?

	<b>%Likely Voters</b>	Democrats	Republicans	Independents
Yes	<b>65</b>	63	50	40
No	<b>24</b>	11	38	44
Don't Know	<b>11</b>	26	12	17
<i>Observations</i>	<b>574</b>	272	249	51

**TABLE 12:** QUESTION 3 ASKS VOTERS IF THE STATE SHOULD ADOPT TOP-5 OPEN PRIMARIES AND RANKED CHOICE VOTING IN GENERAL ELECTIONS. IF THE ELECTION WERE HELD TODAY, HOW WOULD YOU VOTE ON THIS CONSTITUTIONAL AMENDMENT?

	<b>%Likely Voters</b>	Democrats	Republicans	Independents
Yes	<b>37</b>	28	25	26
No	<b>36</b>	23	46	50
Don't Know	<b>27</b>	48	28	24
<i>Observations</i>	<b>576</b>	274	250	50



## 5 NEVADA AND THE NATION

In addition to questions about the upcoming election, we also asked respondents for their views on various political figures, institutions, and policy issues. For these questions, we use our total weighted sample rather than focusing on likely voters.

### 5.1 APPROVAL OF POLITICAL FIGURES AND INSTITUTIONS

**TABLE 13:** “DO YOU APPROVE OR DISAPPROVE OF THE WAY THAT EACH OF THE FOLLOWING IS HANDLING THEIR JOB?”

	%Approve	%Disapprove	%Not sure
President Joe Biden	38	50	13
Governor Steve Sisolak	42	37	20

We also asked Republican respondents if they think Donald Trump should be the Republican Party’s nominee for president in 2024.

**TABLE 14:** “DO YOU THINK DONALD TRUMP SHOULD BE THE REPUBLICAN NOMINEE FOR PRESIDENT IN 2024?”

	%Yes	%No	%Not sure
Republican Respondents	63	24	13

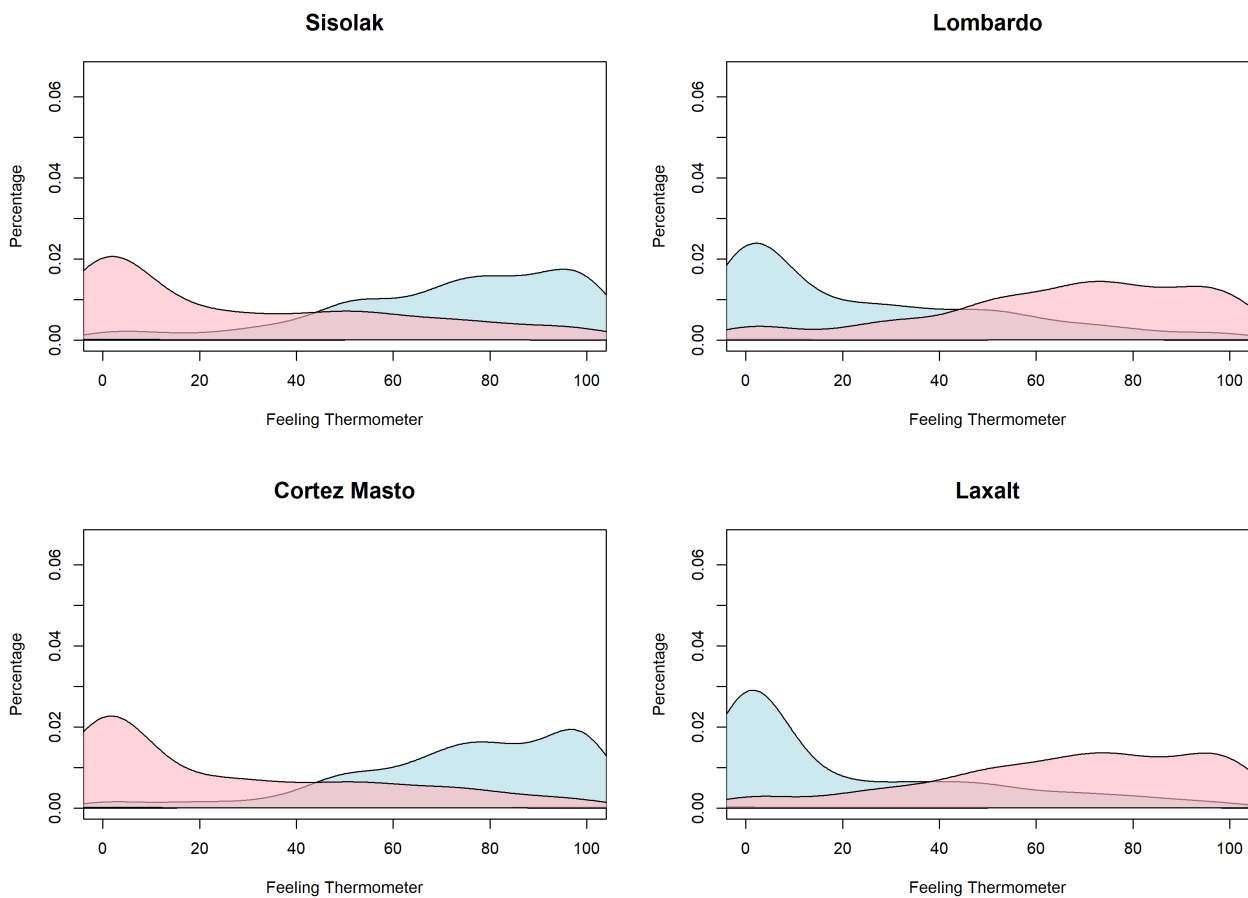
We also asked respondents about their general feelings towards several political figures, both nationally and in Nevada. We use a Feeling Thermometer, where respondents are asked to rate politicians on a scale between zero and 100, where zero means they view the person very unfavorably and 100 means they view the person very favorably.

**TABLE 15: FEELING THERMOMETER**

Political Figure	All Avg.	Dems Avg.	Reps Avg.	Ind Avg.
Joe Biden	46	72	22	35
Kamala Harris	44	70	22	32
Donald Trump	44	17	75	39
Steve Sisolak	51	69	35	42
Joe Lombardo	45	27	64	43
Catherine Cortez Masto	52	72	34	39
Adam Laxalt	42	23	64	38
Cisco Aguilar	50	57	45	42
Jim Marchant	47	38	59	43

We graphed the partisan feeling thermometer distributions of Steve Sisolak, Joe Lombardo, Catherine Cortez Masto, and Adam Laxalt, which shows how intensely partisans like or dislike a particular politician.

**FIGURE 1: PARTISAN FEELING THERMOMETERS**



**TABLE 16:** “HOW MUCH DO YOU APPROVE OR DISAPPROVE OF THE WAY THAT EACH OF THE FOLLOWING IS HANDLING ITS JOB?”

	% Approve/Strongly approve	Neither Approve/Disapprove
United States Congress	26	27
United States Supreme Court	29	28
Nevada State Legislature	34	35
Your local election administrator	38	36
Your local school board	32	28
Your local police department	34	43

## 6 ELECTION ADMINISTRATION

We asked respondents more in-depth questions about election administration. We asked respondents about their confidence that the election will be conducted fairly and accurately, ballot access, and the mail voting system in Nevada.

**TABLE 17:** “HOW MUCH DO YOU AGREE WITH EACH OF THE FOLLOWING STATEMENTS ABOUT THE UPCOMING ELECTION?” (% AGREE)

	% All	% Dem	% Rep	% Ind
The election will be conducted fairly and accurately.	57	75	46	33
All citizens who want to vote in the election will be able to.	71	71	77	60
I have confidence in the mail voting system in Nevada.	52	69	38	35