

WCSD Zoning Advisory Committee



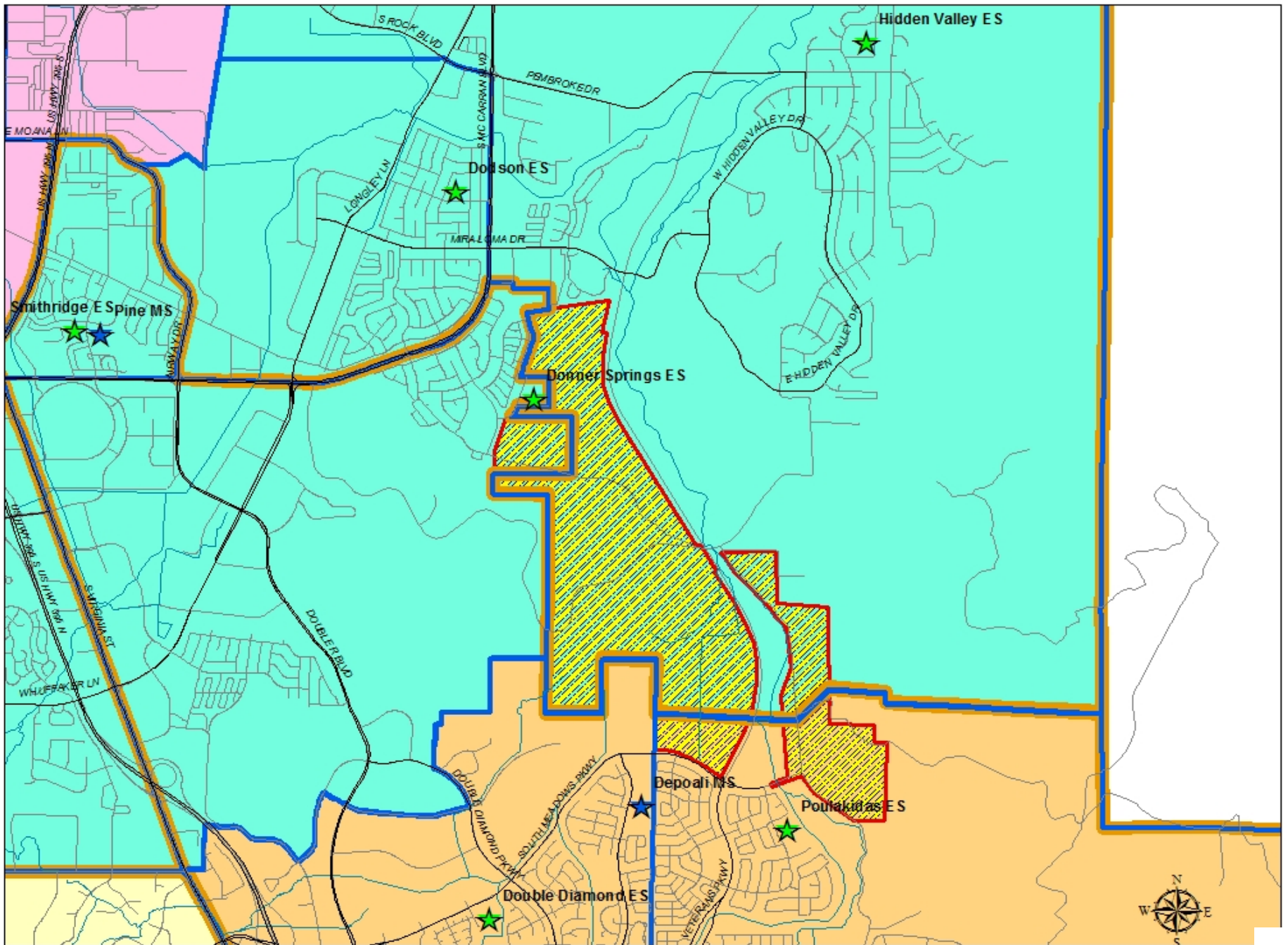
February 17th, 2022

Daybreak/Talus Valley Development

Important Note:

Daybreak/Talus Valley is currently in the initial stages of development. There are no students currently living within the development boundaries.

Any rezone recommended by the ZAC and approved by the Board of Trustees will affect only those future students and their families who choose to reside within this development.



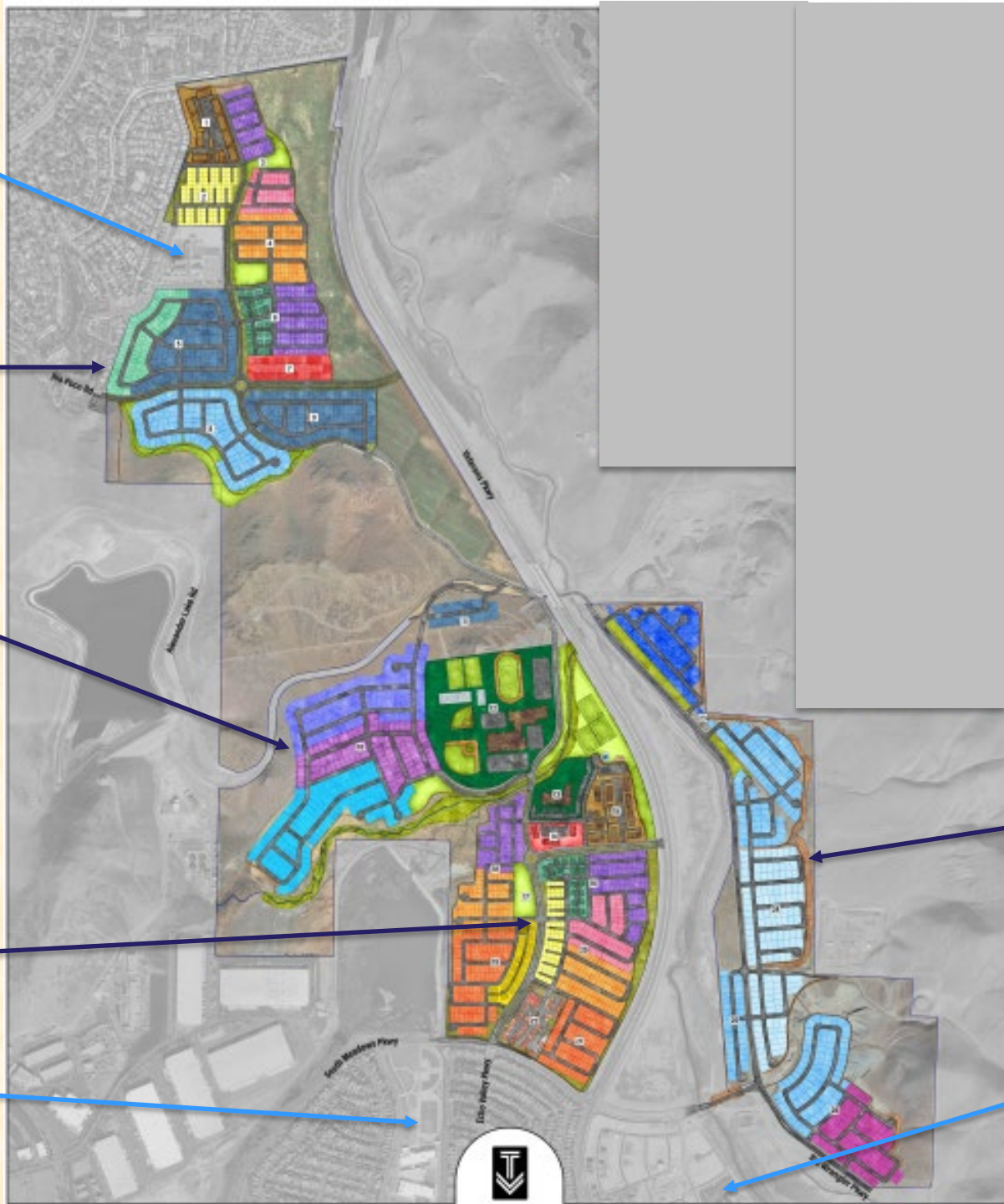
Donner Springs ES

Rio Poco North

Alexander Lake Quarry

Town Center

Depoali MS



Current Anticipated Buildout

Single Family = 2,313

Multi-Family = 682

Total Residential Units = 2,995

First occupied units anticipated in 2024

Estimated Buildout = approx. 20 years

Rio Wrangler East

Poulakidas ES



Proposed Zone Changes:

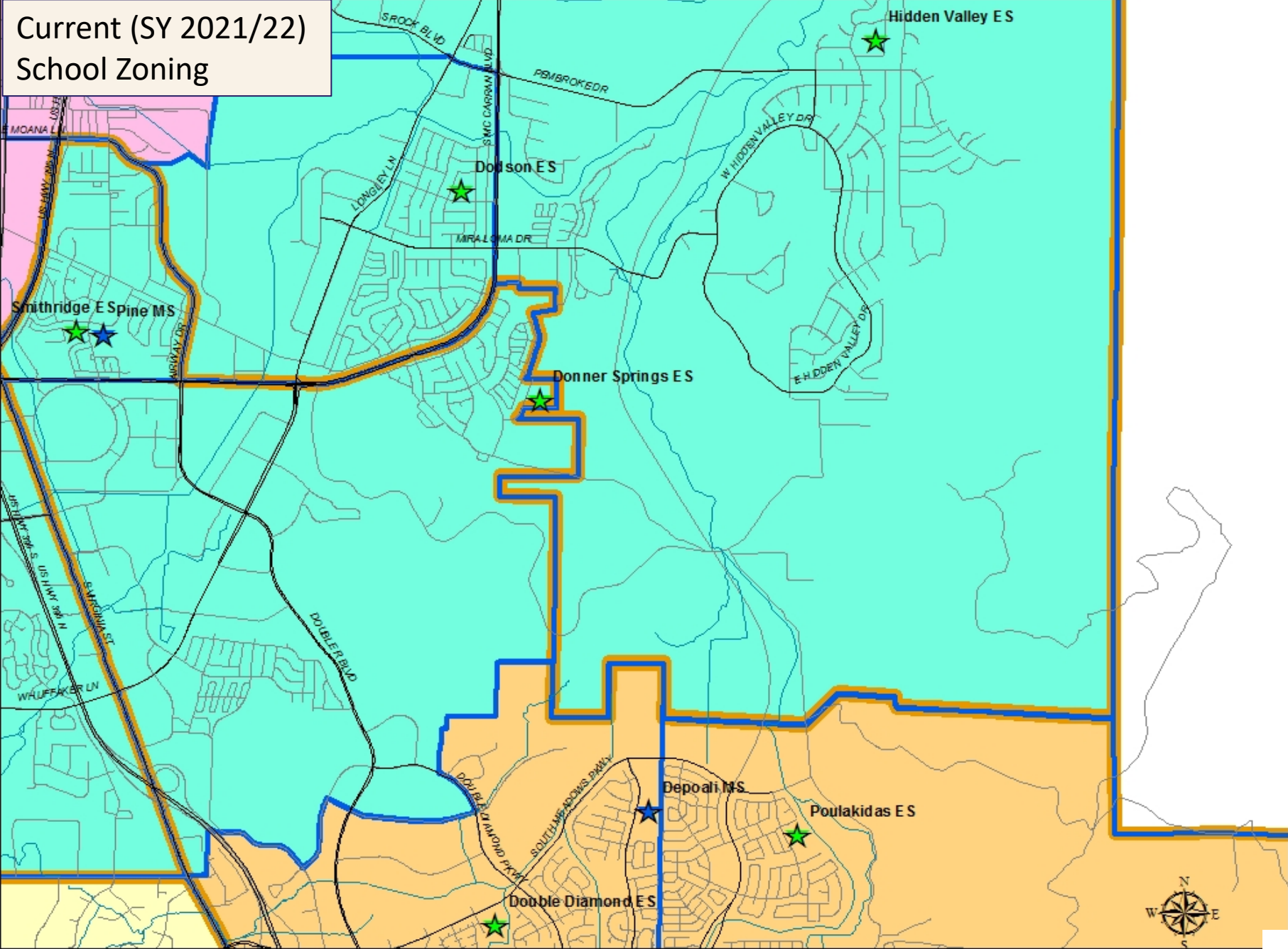
Development Area	Current School Zoning			Proposed School Zoning		
	Elementary	Middle	High	Elementary	Middle	High
Rio POCO North	Hidden Valley; Donner Springs	Pine	Damonte Ranch; Wooster	Donner Springs	Pine	Damonte Ranch
Alexander Valley Quarry	Hidden Valley	Pine	Wooster	Donner Springs	Pine	Damonte Ranch
Town Center	Hidden Valley; Poulakidas	Depoali; Pine	Damonte Ranch; Wooster	Double Diamond	Depoali	Damonte Ranch
Rio Wrangler East	Hidden Valley; Poulakidas	Depoali; Pine	Damonte Ranch; Wooster	Poulakidas	Depoali	Damonte Ranch

Development Area	Current Estimate of Students at Buildout		
	Elementary	Middle	High
Rio POCO North	121	51	78
Alexander Valley Quarry	42	18	29
Town Center	104	44	66
Rio Wrangler East	56	24	38
Totals:	323	137	211

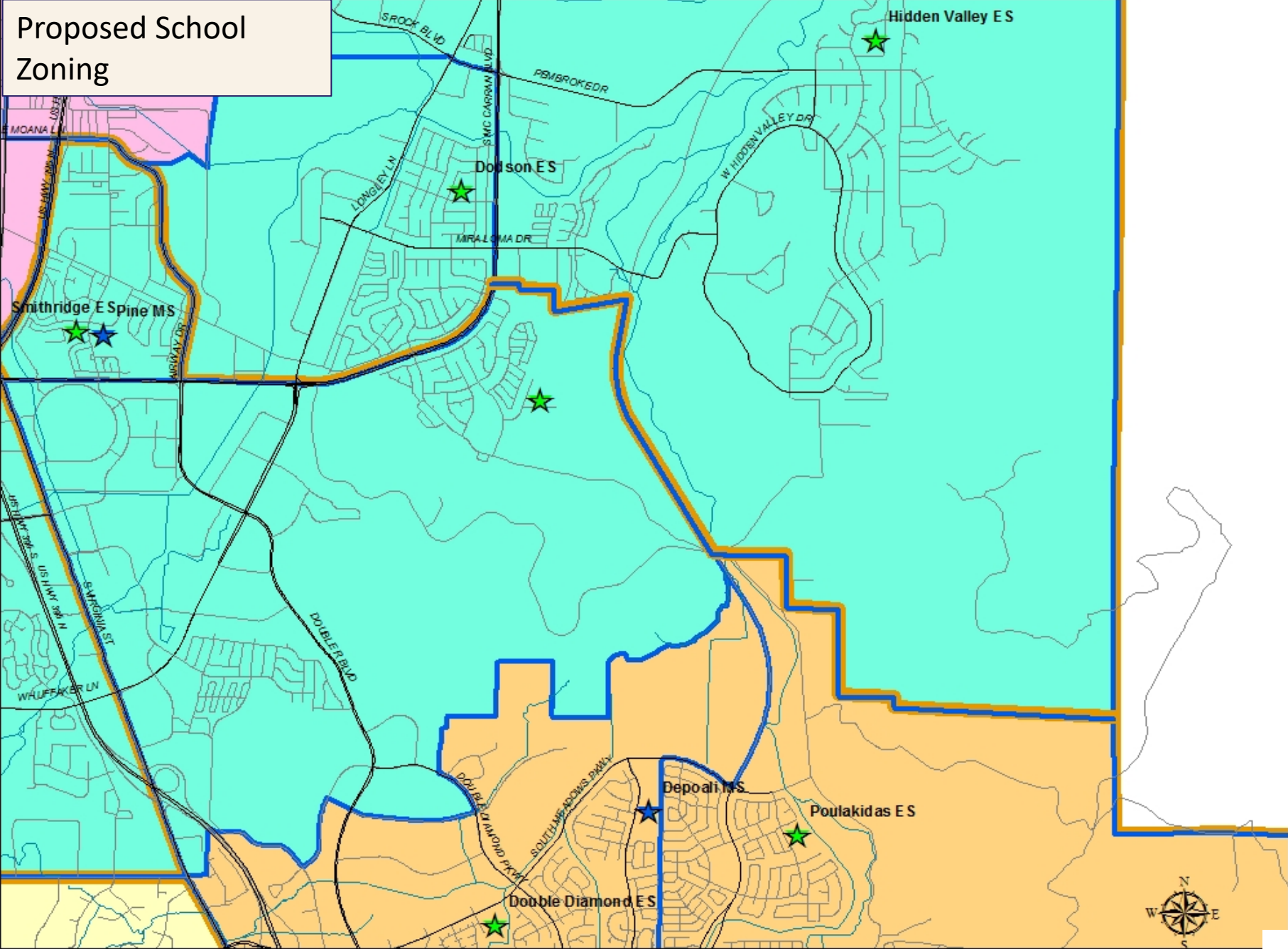
Student Generation Rates:

- 0.122 / 0.052 / 0.084 students per single-family unit in this area for ES/MS/HS respectively. Lower rates for multi-family units.
- Based on years of empirical data. Updated annually.

Current (SY 2021/22)
School Zoning



Proposed School Zoning



Capacities and Projected enrollments, prior to any further action. NOTE: these numbers assume approval of the EXPANDED Rio Wrangler attendance zone (Option #2)

School	Capacities		Val. Day Enroll. 10/1/2021	Projected Enrollments									
	Max.	Add. Temp.		2022/23	2023/24	2024/25	2025/26	2026/27	2027/28	2028/29	2029/30	2030/31	2031/32
DONNER SPRINGS	766	0	451 59%	461 60%	483 63%	485 63%	480 63%	492 64%	492 64%	493 64%	497 65%	502 66%	511 67%
DOUBLE DIAMOND	717	0	542 76%	545 76%	558 78%	560 78%	565 79%	568 79%	566 79%	571 80%	578 81%	583 81%	592 83%
POULAKIDAS	657	200	845 129%	867 132%	570 87%	574 87%	559 85%	558 85%	553 84%	568 86%	579 88%	588 89%	602 92%
DEPOALI MS	1,450	0	876 60%	833 57%	831 57%	852 59%	879 61%	925 64%	953 66%	942 65%	924 64%	898 62%	897 62%
DAMONTE RANCH HS	2,235	0	1,935 87%	2,024 91%	1,979 89%	1,958 88%	1,928 86%	1,844 83%	1,845 83%	1,838 82%	1,834 82%	1,847 83%	1,834 82%

Capacities and Projected enrollments, with attendance zone boundary changes to future development, as proposed

School	Capacities		Val. Day Enroll. 10/1/2021	Projected Enrollments									
	Max.	Add. Temp.		2022/23	2023/24	2024/25	2025/26	2026/27	2027/28	2028/29	2029/30	2030/31	2031/32
DONNER SPRINGS	766	0	451 59%	461 60%	483 63%	485 63%	480 63%	496 65%	499 65%	502 66%	508 66%	514 67%	524 68%
DOUBLE DIAMOND	717	0	542 76%	545 76%	558 78%	563 79%	574 80%	582 81%	585 82%	591 82%	600 84%	605 84%	613 85%
POULAKIDAS	657	200	845 129%	867 132%	570 87%	578 88%	567 86%	571 87%	570 87%	590 90%	602 92%	611 93%	625 95%
DEPOALI MS	1,450	0	876 60%	833 57%	831 57%	856 59%	888 61%	940 65%	973 67%	967 67%	951 66%	928 64%	930 64%
DAMONTE RANCH HS	2,235	0	1,935 87%	2,024 91%	1,979 89%	1,963 88%	1,941 87%	1,864 83%	1,873 84%	1,867 84%	1,860 83%	1,871 84%	1,856 83%

Board Policy 7105 & Admin. Regulation 7107

Board Policy 7105 – School Attendance Zones

- Key considerations ... safety, proximity, demographics, space availability, transportation, growth, space optimization
- Establishes the ZAC and articulates various Governing Principles and Practices

Admin. Reg. 7107 – Alignment of School Attendance Zones

- Key considerations ... keeping neighborhoods together, assigning students to nearest schools, compact attendance zones, growth planning, aligned feeder patterns, transportation.
- Defines ‘overcrowding’ and other mitigation strategies
- Variances – highest grade rising following rezoning

Zoning Advisory Committee website

Quick Links

- [Board Policy 7105 School and Attendance Zones](#)
- [Administrative Regulation 7107 Alignment of School Attendance Zones](#)

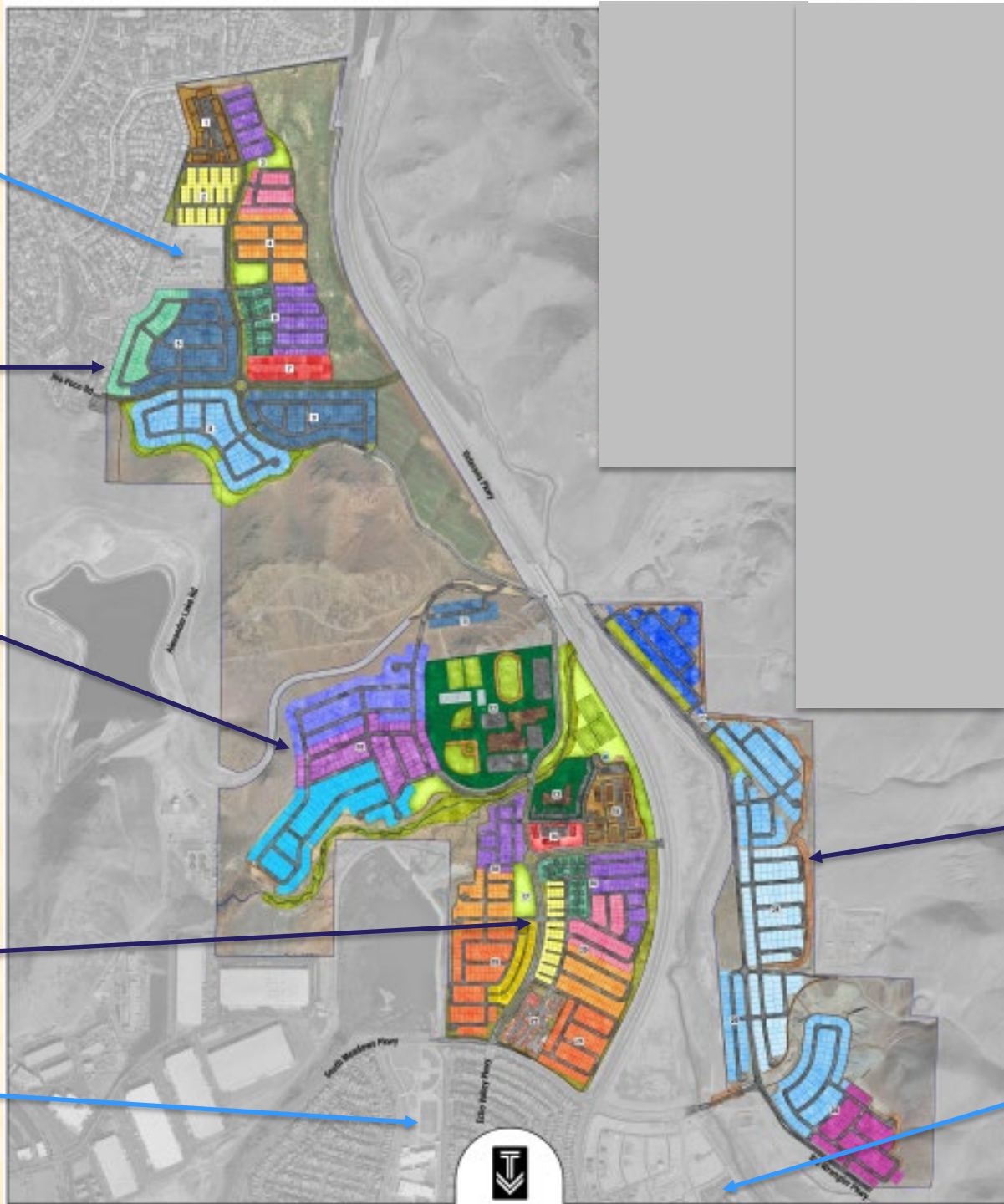
Donner Springs ES

Rio Poco North

Alexander Lake Quarry

Town Center

Depoali MS



Current Anticipated Buildout

Single Family = 2,313

Multi-Family = 682

Total Residential Units = 2,995

First occupied units anticipated in 2024

Estimated Buildout = approx. 20 years

Rio Wrangler East

Poulakidas ES



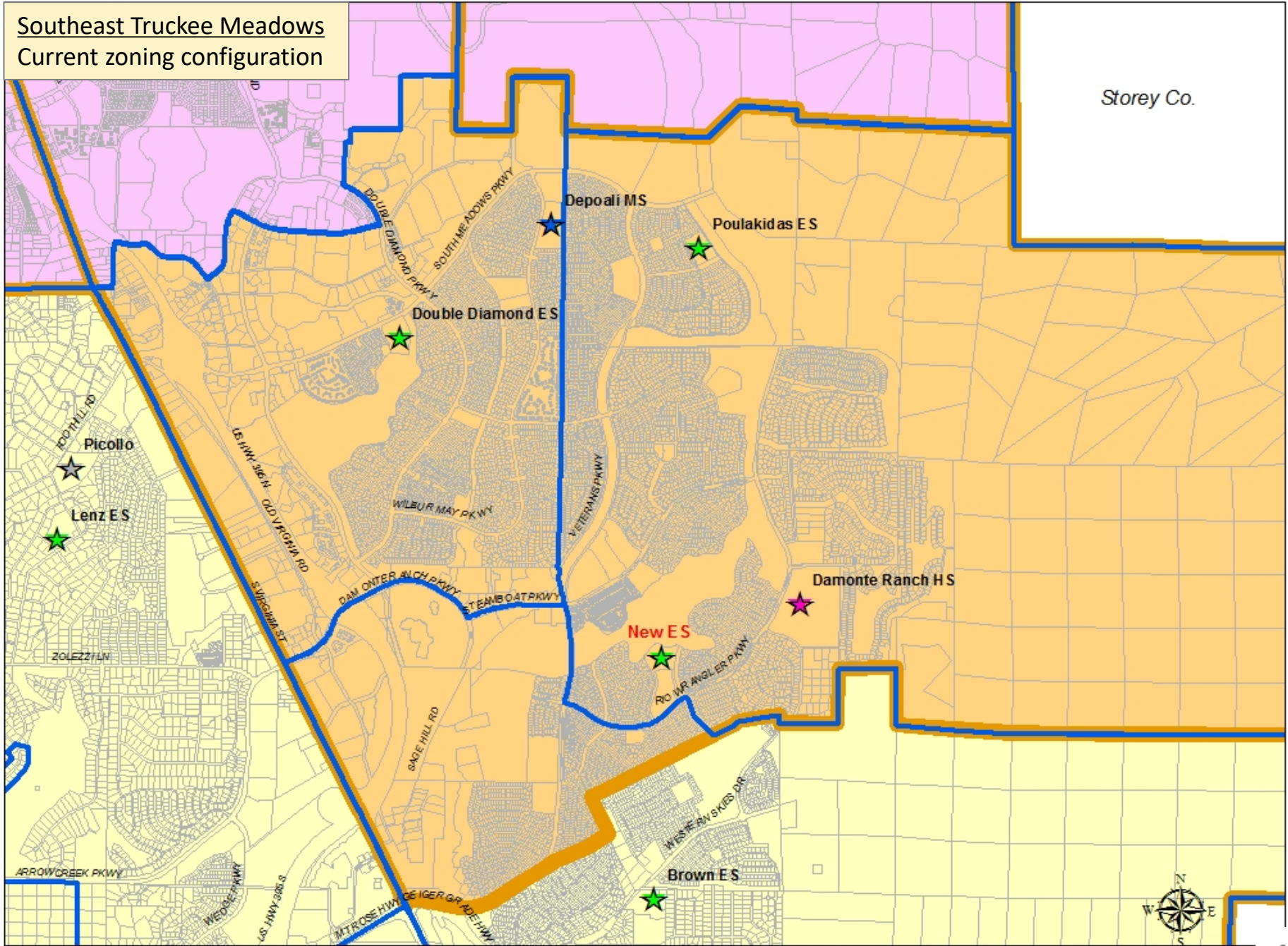
Staff Recommendation

I move to modify the attendance zones to the following schools in the manner presented by staff, effective the 2023/2024 school year: Double Diamond Elementary School, Nick Poulakidas Elementary School, Donner Springs Elementary School, Hidden Valley Elementary School, Edward Pine Middle School, Kendyl Depoali Middle School, Earl Wooster High School, and Damonte Ranch High School.

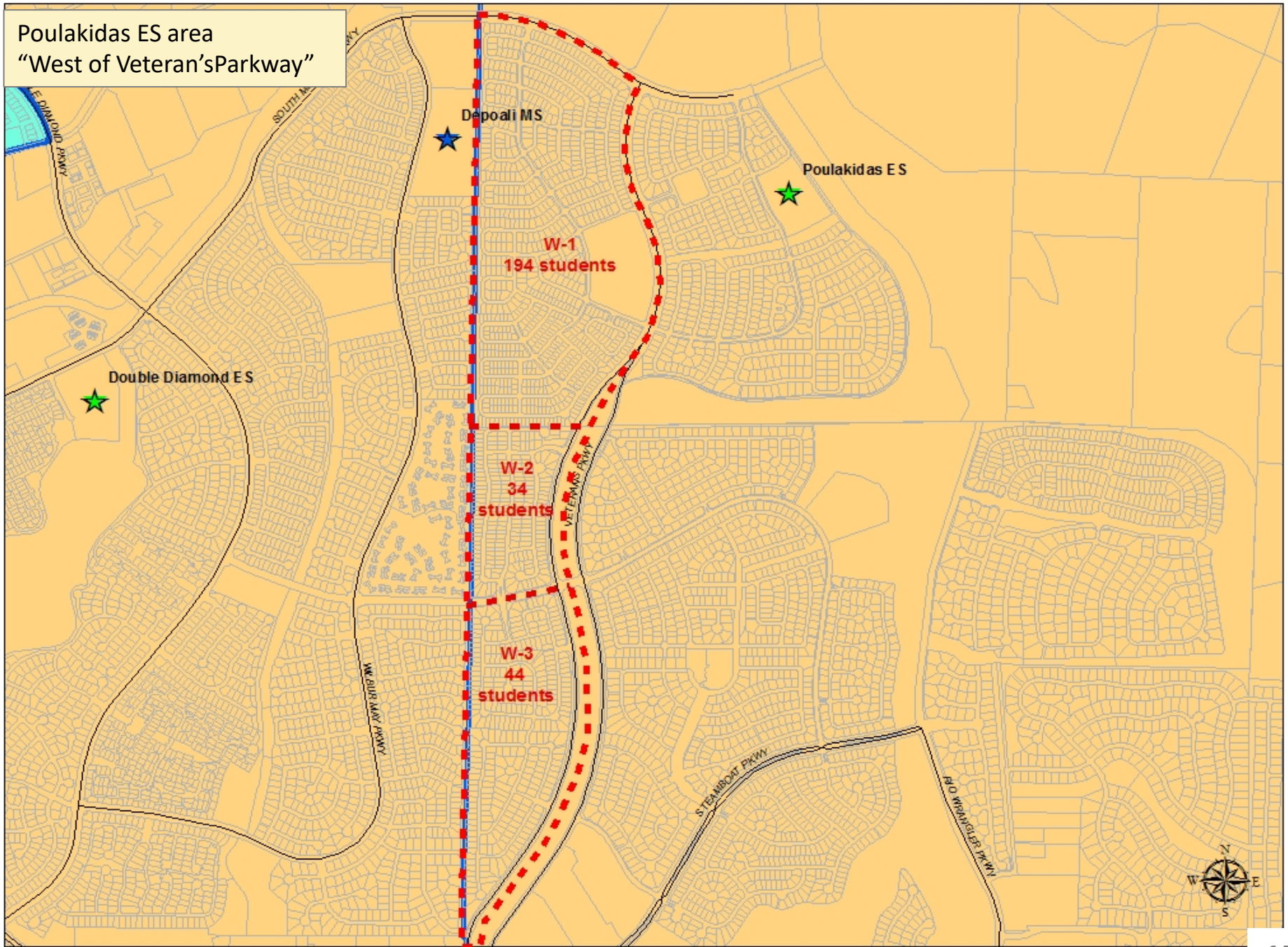
New Rio Wrangler area Elementary School

Southwest Truckee Meadows
Current zoning configuration

Storey Co.

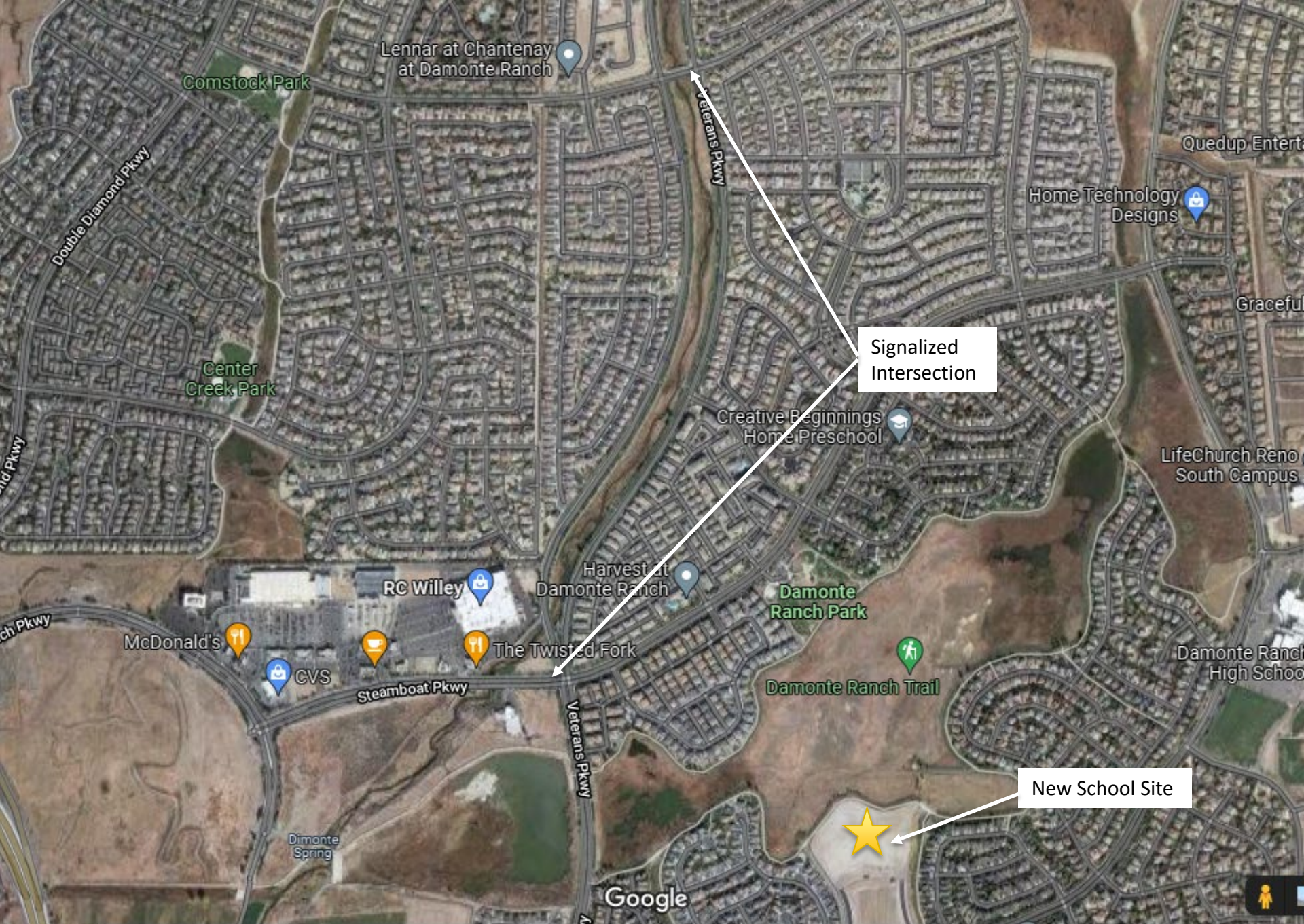


Poulakidas ES area
"West of Veteran's Parkway"





New Traffic Signal at
Veteran's Pkwy. & Long
Meadow Dr.,



Lennar at Chantenay
at Damonte Ranch

Comstock Park

Double Diamond Pkwy

Center
Creek Park

Veterans Pkwy

Signalized
Intersection

Home Technology
Designs

Quedup Entert

Graceful

Creative Beginnings
Home Preschool

LifeChurch Reno
South Campus

RC Willey

Harvest at
Damonte Ranch

Damonte
Ranch Park

McDonald's

CVS

The Twisted Fork

Steamboat Pkwy

Veterans Pkwy

Damonte Ranch Trail

Damonte Ranch
High School

Dimonte
Spring

New School Site



Google



Capacities and Enrollments, for rezoning of area west of Veteran's Parkway from Poulakidas ES to Double Diamond ES

Capacities and Projected enrollments, Expanded Rio Wrangler Zone (Option #2)													
School	Capacities		Val. Day Enroll. 10/1/2021	Projected Enrollments									
	Max.	Add. Temp.		2022/23	2023/24	2024/25	2025/26	2026/27	2027/28	2028/29	2029/30	2030/31	2031/32
	DOUBLE DIAMOND	717	0	542 76%	545 76%	558 78%	560 78%	565 79%	568 79%	566 79%	571 80%	578 81%	583 81%
POULAKIDAS	657	200	845 129%	867 132%	570 87%	574 87%	559 85%	558 85%	553 84%	568 86%	579 88%	588 89%	602 92%

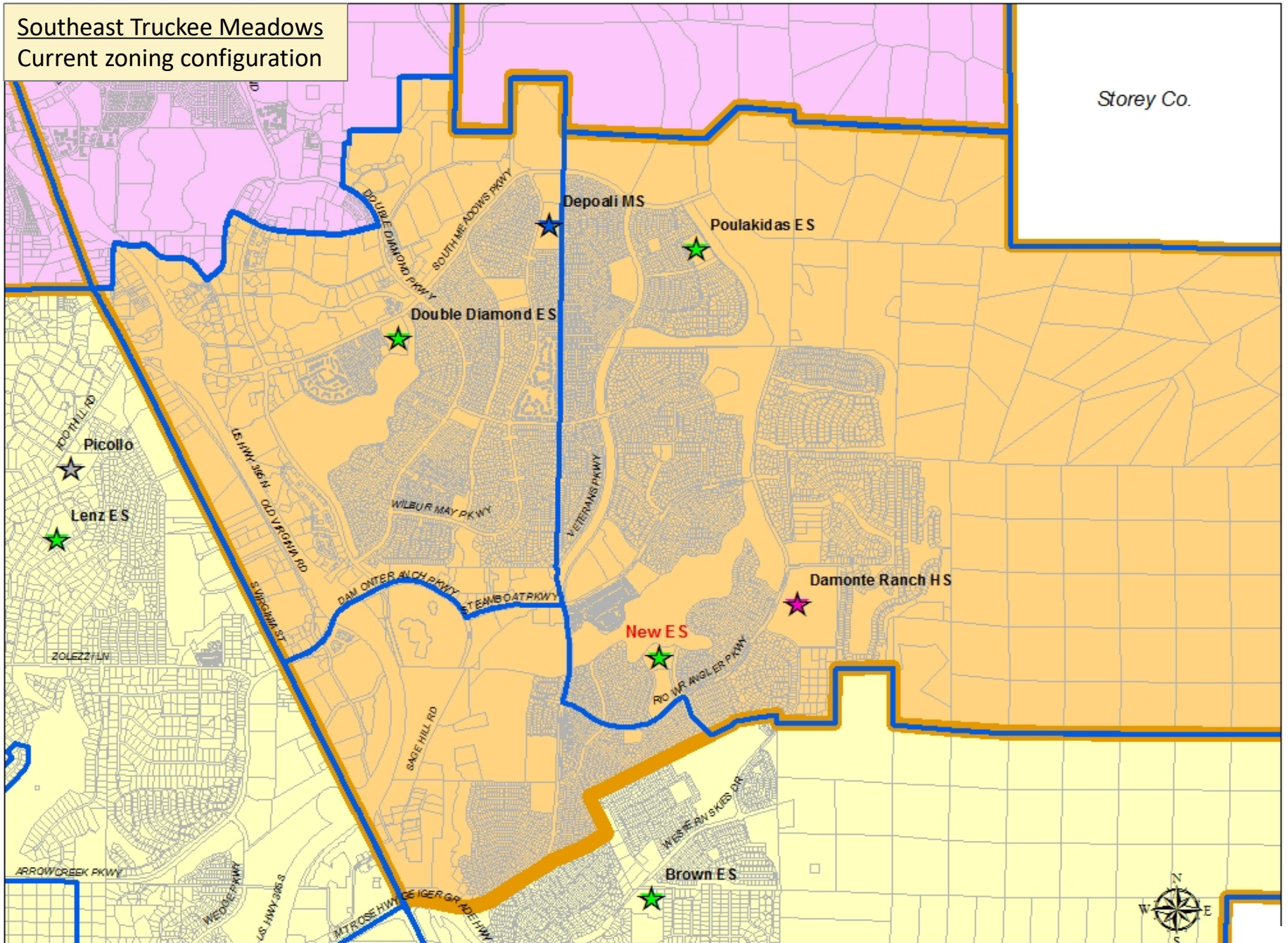
Capacities and Projected enrollments, Expanded Rio Wrangler Zone (Option #2) + rezone of area W-1 from Poulakidas to Double Diamond													
School	Capacities		Val. Day Enroll. 10/1/2021	Projected Enrollments									
	Max.	Add. Temp.		2022/23	2023/24	2024/25	2025/26	2026/27	2027/28	2028/29	2029/30	2030/31	2031/32
	DOUBLE DIAMOND	717	0	542 76%	545 76%	752 105%	754 105%	759 106%	762 106%	760 106%	765 107%	772 108%	777 108%
POULAKIDAS	657	200	845 129%	867 132%	376 57%	380 58%	365 56%	364 55%	359 55%	374 57%	385 59%	394 60%	408 62%

Capacities and Enrollments, for rezoning of area west of Veteran's Parkway from Poulakidas ES to Double Diamond ES

Capacities and Projected enrollments, Expanded Rio Wrangler Zone (Option #2) + rezone of areas W-1 & W-2 from Poulakidas to DDES													
School	Capacities		Val. Day Enroll. 10/1/2021	Projected Enrollments									
	Max.	Add. Temp.		2022/23	2023/24	2024/25	2025/26	2026/27	2027/28	2028/29	2029/30	2030/31	2031/32
DOUBLE DIAMOND	717	0	542	545	794	800	805	808	806	811	818	823	832
			76%	76%	111%	112%	112%	113%	112%	113%	114%	115%	116%
POULAKIDAS	657	200	845	867	334	334	319	318	313	328	339	348	362
			129%	132%	51%	51%	49%	48%	48%	50%	52%	53%	55%

Capacities and Projected enrollments, Expanded Rio Wrangler Zone (Option #2) + rezone of areas W-1, W-2 & W-3 from Poulakidas to													
School	Capacities		Val. Day Enroll. 10/1/2021	Projected Enrollments									
	Max.	Add. Temp.		2022/23	2023/24	2024/25	2025/26	2026/27	2027/28	2028/29	2029/30	2030/31	2031/32
DOUBLE DIAMOND	717	0	542	545	838	844	849	852	850	855	862	867	876
			76%	76%	117%	118%	118%	119%	119%	119%	120%	121%	122%
POULAKIDAS	657	200	845	867	290	290	275	274	269	284	295	304	318
			129%	132%	44%	44%	42%	42%	41%	43%	45%	46%	48%

**Southwest Truckee Meadows
Current zoning configuration**



Storey Co.

Depoali MS

Poulakidas ES

Double Diamond ES

Picollo

Lenz ES

New ES

Damonte Ranch HS

Brown ES

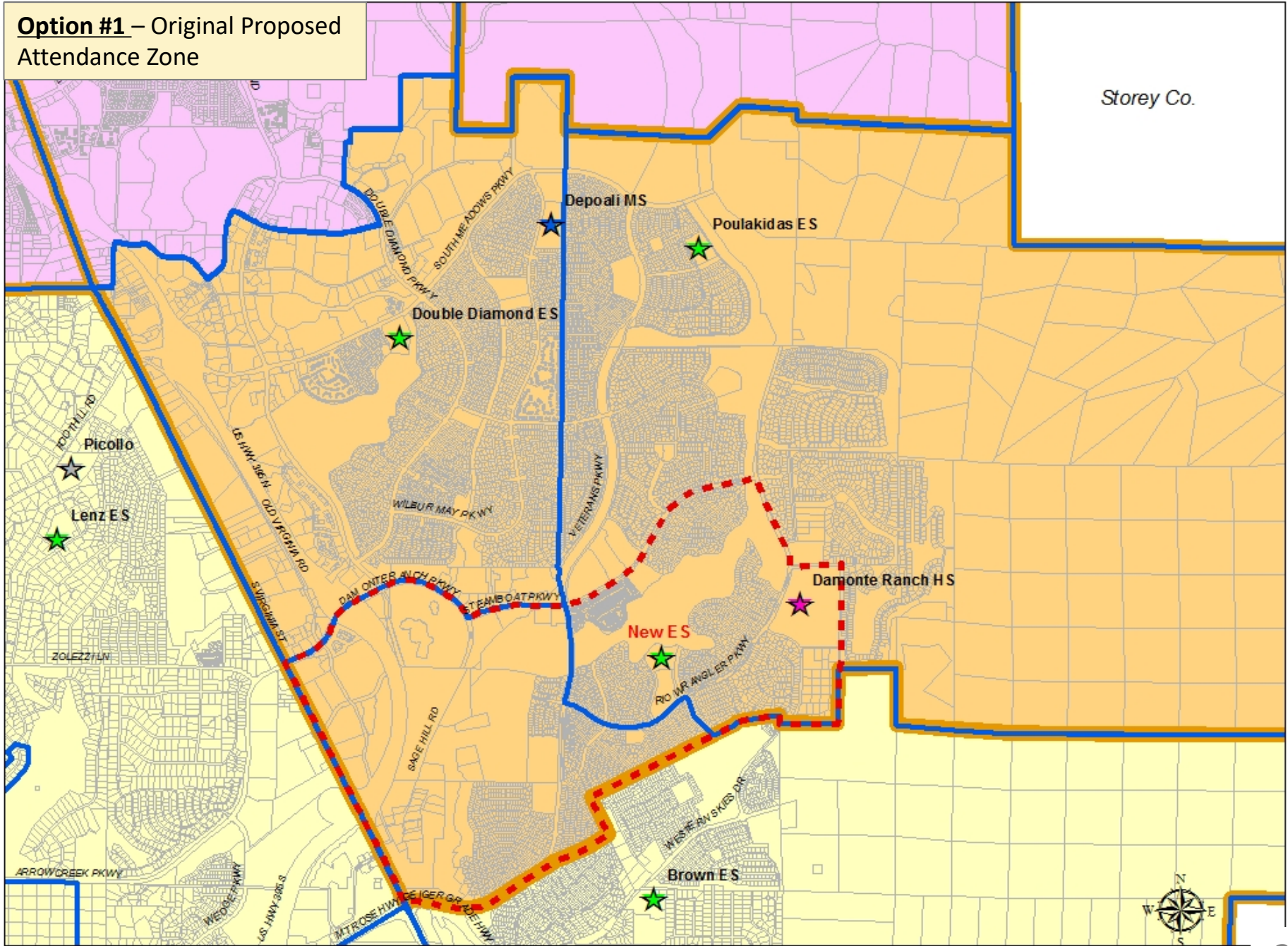


Capacities and Enrollments, prior to any action

Capacities and Projected enrollments, prior to any further action													
School	Capacities		Val. Day Enroll. 10/1/2021	Projected Enrollments									
	Max.	Add. Temp.		2022/23	2023/24	2024/25	2025/26	2026/27	2027/28	2028/29	2029/30	2030/31	2031/32
BROWN	632	250	627 99%	678 107%	709 112%	722 114%	711 113%	695 110%	663 105%	660 104%	664 105%	667 106%	679 107%
DOUBLE DIAMOND	717	0	541 75%	545 76%	558 78%	561 78%	566 79%	569 79%	568 79%	574 80%	582 81%	586 82%	595 83%
POULAKIDAS	657	200	845 129%	867 132%	884 135%	894 136%	883 134%	886 135%	880 134%	896 136%	907 138%	916 139%	931 142%
RIO WRANGLER	657	0	0 0%	0 0%	0 0%	0 0%	0 0%	0 0%	0 0%	0 0%	0 0%	0 0%	0 0%
DEPOALI	1,450	0	876 60%	833 57%	831 57%	852 59%	879 61%	925 64%	953 66%	942 65%	924 64%	898 62%	897 62%
HERZ	1,381	0	827 60%	824 60%	790 57%	786 57%	824 60%	796 58%	788 57%	763 55%	767 56%	756 55%	750 54%
DAMONTE RANCH	2,235	0	1,935 87%	2,024 91%	1,979 89%	1,958 88%	1,928 86%	1,844 83%	1,845 83%	1,838 82%	1,834 82%	1,847 83%	1,834 82%
GALENA	1,882	0	1,194 63%	1,234 66%	1,278 68%	1,281 68%	1,245 66%	1,244 66%	1,210 64%	1,240 66%	1,248 66%	1,246 66%	1,225 65%

Option #1 – Original Proposed Attendance Zone

Storey Co.

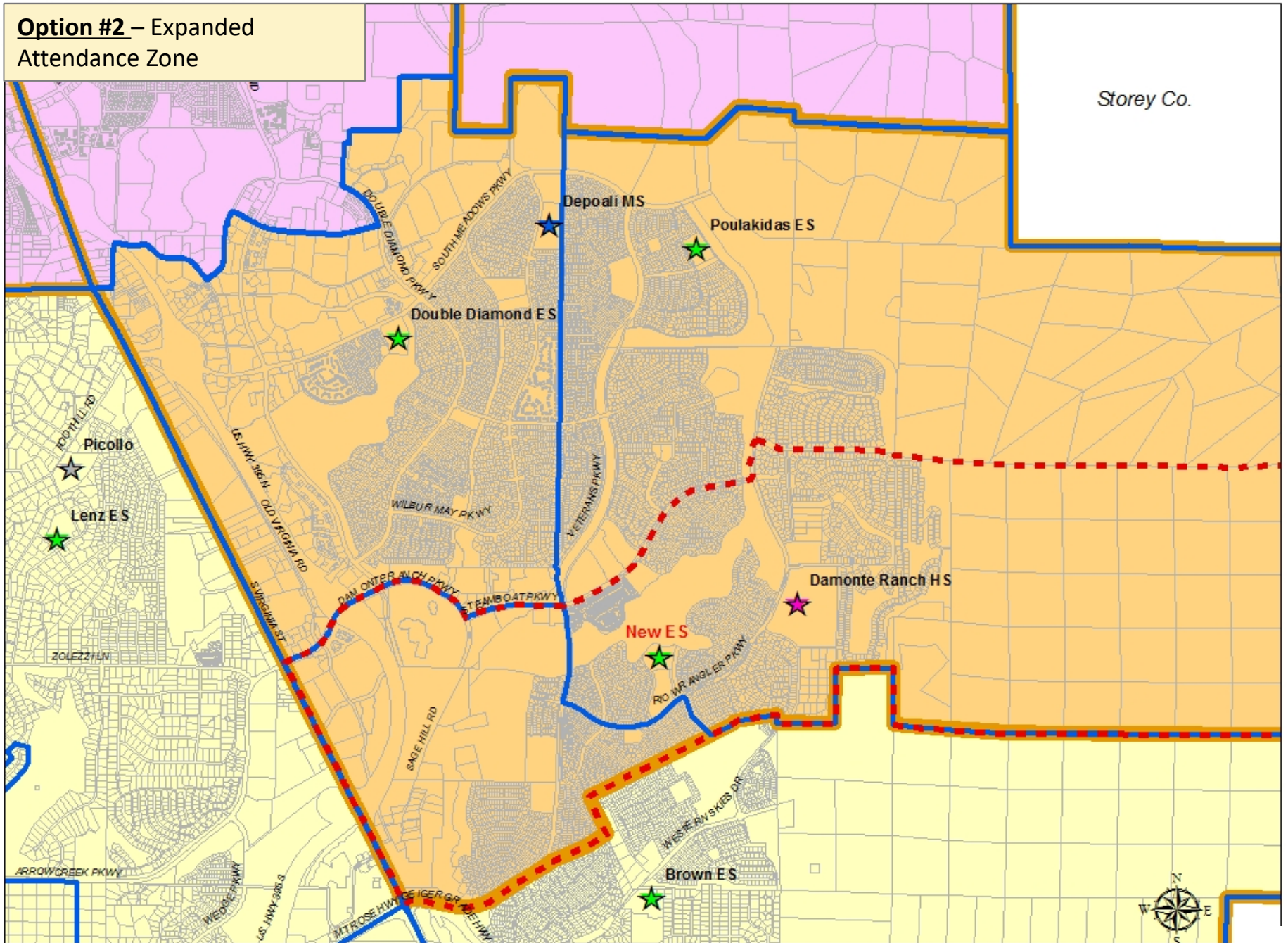


Option #1 - Original Proposed Attendance Zone

Capacities and Projected enrollments, ORIGINAL Rio Wrangler zone													
School	Capacities		Val. Day Enroll. 10/1/2021	Projected Enrollments									
	Max.	Add. Temp.		2022/23	2023/24	2024/25	2025/26	2026/27	2027/28	2028/29	2029/30	2030/31	2031/32
BROWN	632	250	627 99%	678 107%	471 75%	478 76%	461 73%	441 70%	409 65%	406 64%	410 65%	413 65%	425 67%
DOUBLE DIAMOND	717	0	542 76%	545 76%	558 78%	560 78%	565 79%	568 79%	566 79%	571 80%	578 81%	583 81%	592 83%
POULAKIDAS	657	200	845 129%	867 132%	651 99%	658 100%	645 98%	645 98%	640 97%	655 100%	666 101%	675 103%	689 105%
RIO WRANGLER	657	0	0 0%	0 0%	471 72%	480 73%	489 74%	496 75%	496 75%	496 75%	496 75%	496 75%	496 75%

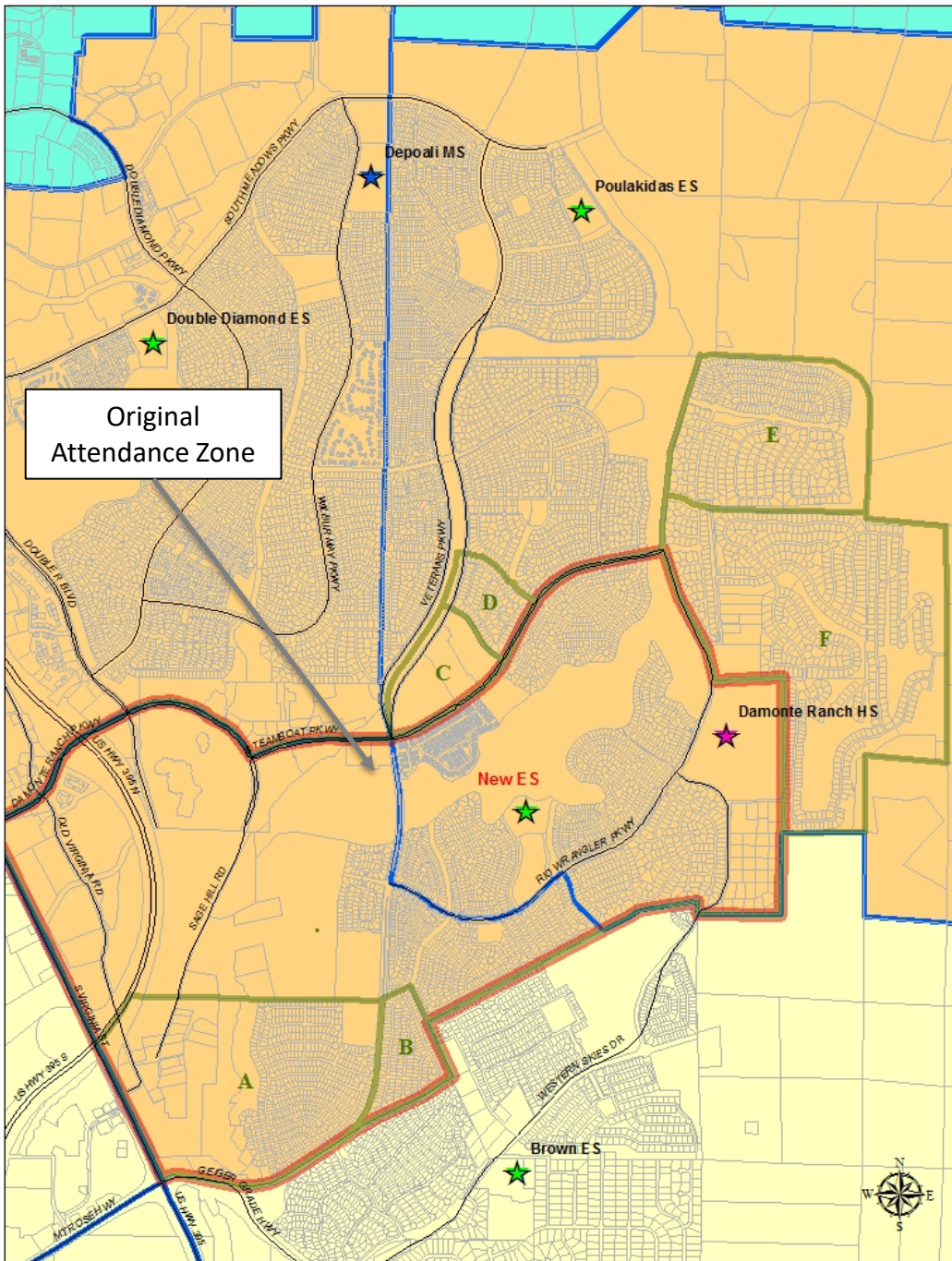
Option #2 – Expanded Attendance Zone

Storey Co.



Option #2 - Expanded Attendance Zone

Capacities and Projected enrollments, EXPANDED Rio Wrangler zone													
School	Capacities		Val. Day Enroll. 10/1/2021	Projected Enrollments									
	Max.	Add. Temp.		2022/23	2023/24	2024/25	2025/26	2026/27	2027/28	2028/29	2029/30	2030/31	2031/32
BROWN	632	250	627 99%	678 107%	471 75%	478 76%	461 73%	441 70%	409 65%	406 64%	410 65%	413 65%	425 67%
DOUBLE DIAMOND	717	0	542 76%	545 76%	558 78%	560 78%	565 79%	568 79%	566 79%	571 80%	578 81%	583 81%	592 83%
POULAKIDAS	657	200	845 129%	867 132%	570 87%	574 87%	559 85%	558 85%	553 84%	568 86%	579 88%	588 89%	602 92%
RIO WRANGLER	657	0	0 0%	0 0%	552 84%	564 86%	575 88%	583 89%	583 89%	583 89%	583 89%	583 89%	583 89%



Area	Currently Zoned For:	Students currently attending zoned school:
A	Brown ES	115
	Depoali MS	61
	DRHS	54
B	Brown ES	43
	Depoali MS	19
	DRHS	25
C	Poulakidas ES	40
D	Poulakidas ES	3
E	Poulakidas ES	72
F	Poulakidas ES	70

Capacities and Enrollments, Impacts of Areas A and/or B remaining at Brown ES

Important note – If Areas A and/or B remain zoned for Brown ES, additional actions will be required to move students in these areas currently zoned for Depoali MS to Herz MS and from Damonte Ranch HS to Galena HS to avoid pocket split-feeder zonings for these areas.

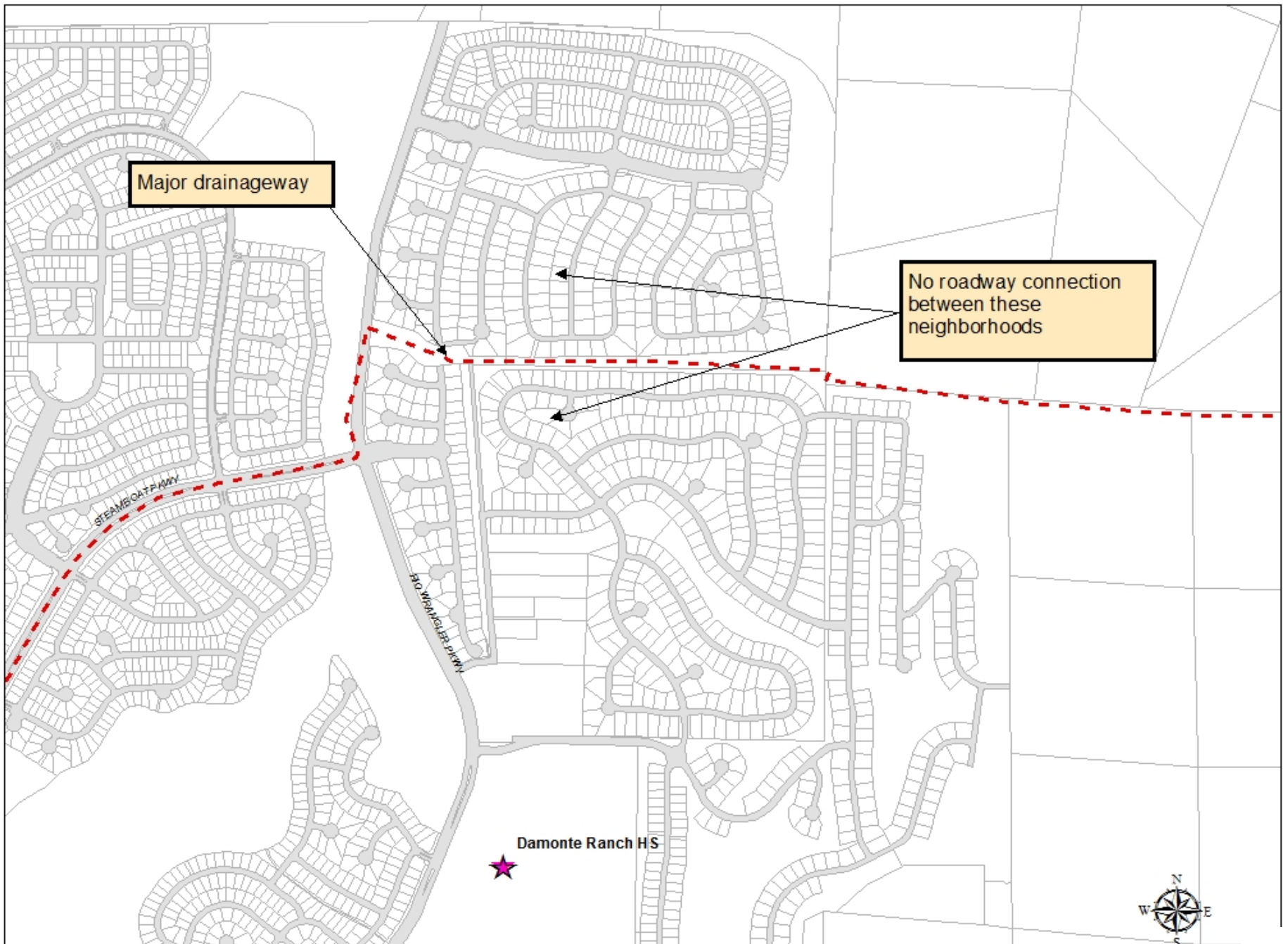
Option #3 - Areas A and/or B remaining at Brown ES

Capacities and Projected enrollments, Option #2 - EXPANDED Rio Wrangler zone													
School	Capacities		Val. Day Enroll. 10/1/2021	Projected Enrollments									
	Max.	Add. Temp.		2022/23	2023/24	2024/25	2025/26	2026/27	2027/28	2028/29	2029/30	2030/31	2031/32
BROWN	632	250	627 99%	678 107%	471 75%	478 76%	461 73%	441 70%	409 65%	406 64%	410 65%	413 65%	425 67%
DOUBLE DIAMOND	717	0	542 76%	545 76%	558 78%	560 78%	565 79%	568 79%	566 79%	571 80%	578 81%	583 81%	592 83%
POULAKIDAS	657	200	845 129%	867 132%	570 87%	574 87%	559 85%	558 85%	553 84%	568 86%	579 88%	588 89%	602 92%
RIO WRANGLER	657	0	0 0%	0 0%	552 84%	564 86%	575 88%	583 89%	583 89%	583 89%	583 89%	583 89%	583 89%
DEPOALI	1,450	0	876 60%	833 57%	831 57%	852 59%	879 61%	925 64%	953 66%	942 65%	924 64%	898 62%	897 62%
HERZ	1,381	0	827 60%	824 60%	790 57%	786 57%	824 60%	796 58%	788 57%	763 55%	767 56%	756 55%	750 54%
DAMONTE RANCH	2,235	0	1,935 87%	2,024 91%	1,979 89%	1,958 88%	1,928 86%	1,844 83%	1,845 83%	1,838 82%	1,834 82%	1,847 83%	1,834 82%
GALENA	1,882	0	1,194 63%	1,234 66%	1,278 68%	1,281 68%	1,245 66%	1,244 66%	1,210 64%	1,240 66%	1,248 66%	1,246 66%	1,225 65%

Capacities and Projected enrollments, Option #3ab - EXPANDED Rio Wrangler zone, except Areas A & B remain zoned for Brown ES													
School	Capacities		Val. Day Enroll. 10/1/2021	Projected Enrollments									
	Max.	Add. Temp.		2022/23	2023/24	2024/25	2025/26	2026/27	2027/28	2028/29	2029/30	2030/31	2031/32
BROWN	632	250	627 99%	678 107%	649 103%	656 104%	639 101%	619 98%	587 93%	584 92%	588 93%	591 94%	603 95%
DOUBLE DIAMOND	717	0	542 76%	545 76%	558 78%	560 78%	565 79%	568 79%	566 79%	571 80%	578 81%	583 81%	592 83%
POULAKIDAS	657	200	845 129%	867 132%	570 87%	574 87%	559 85%	558 85%	553 84%	568 86%	579 88%	588 89%	602 92%
RIO WRANGLER	657	0	0 0%	0 0%	374 57%	386 59%	397 60%	405 62%	405 62%	405 62%	405 62%	405 62%	405 62%
DEPOALI	1,450	0	876 60%	833 57%	746 51%	767 53%	794 55%	840 58%	868 60%	857 59%	839 58%	813 56%	812 56%
HERZ	1,381	0	827 60%	824 60%	875 63%	871 63%	909 66%	881 64%	873 63%	848 61%	852 62%	841 61%	835 60%
DAMONTE RANCH	2,235	0	1,935 87%	2,024 91%	1,895 85%	1,874 84%	1,844 83%	1,760 79%	1,761 79%	1,754 78%	1,750 78%	1,763 79%	1,750 78%
GALENA	1,882	0	1,194 63%	1,234 66%	1,362 72%	1,365 73%	1,329 71%	1,328 71%	1,294 69%	1,324 70%	1,332 71%	1,330 71%	1,309 70%

Capacities and Projected enrollments, Option #3a - EXPANDED Rio Wrangler zone, except Area A remains zoned for Brown ES													
School	Capacities		Val. Day Enroll. 10/1/2021	Projected Enrollments									
	Max.	Add. Temp.		2022/23	2023/24	2024/25	2025/26	2026/27	2027/28	2028/29	2029/30	2030/31	2031/32
BROWN	632	250	627 99%	678 107%	606 96%	613 97%	596 94%	576 91%	544 86%	541 86%	545 86%	548 87%	560 89%
DOUBLE DIAMOND	717	0	542 76%	545 76%	558 78%	560 78%	565 79%	568 79%	566 79%	571 80%	578 81%	583 81%	592 83%
POULAKIDAS	657	200	845 129%	867 132%	570 87%	574 87%	559 85%	558 85%	553 84%	568 86%	579 88%	588 89%	602 92%
RIO WRANGLER	657	0	0 0%	0 0%	417 63%	429 65%	440 67%	448 68%	448 68%	448 68%	448 68%	448 68%	448 68%
DEPOALI	1,450	0	876 60%	833 57%	765 53%	786 54%	813 56%	859 59%	887 61%	876 60%	858 59%	832 57%	831 57%
HERZ	1,381	0	827 60%	824 60%	856 62%	852 62%	890 64%	862 62%	854 62%	829 60%	833 60%	822 60%	816 59%
DAMONTE RANCH	2,235	0	1,935 87%	2,024 91%	1,920 86%	1,899 85%	1,869 84%	1,785 80%	1,786 80%	1,779 80%	1,775 79%	1,788 80%	1,775 79%
GALENA	1,882	0	1,194 63%	1,234 66%	1,337 71%	1,340 71%	1,304 69%	1,303 69%	1,269 67%	1,299 69%	1,307 69%	1,305 69%	1,284 68%

Capacities and Projected enrollments, Option #3b - EXPANDED Rio Wrangler zone, except Area B remains zoned for Brown ES													
School	Capacities		Val. Day Enroll. 10/1/2021	Projected Enrollments									
	Max.	Add. Temp.		2022/23	2023/24	2024/25	2025/26	2026/27	2027/28	2028/29	2029/30	2030/31	2031/32
BROWN	632	250	627 99%	678 107%	514 81%	521 82%	504 80%	484 77%	452 72%	449 71%	453 72%	456 72%	468 74%
DOUBLE DIAMOND	717	0	542 76%	545 76%	558 78%	560 78%	565 79%	568 79%	566 79%	571 80%	578 81%	583 81%	592 83%
POULAKIDAS	657	200	845 129%	867 132%	570 87%	574 87%	559 85%	558 85%	553 84%	568 86%	579 88%	588 89%	602 92%
RIO WRANGLER	657	0	0 0%	0 0%	509 77%	521 79%	532 81%	540 82%	540 82%	540 82%	540 82%	540 82%	540 82%
DEPOALI	1,450	0	876 60%	833 57%	812 56%	833 57%	860 59%	906 62%	934 64%	923 64%	905 62%	879 61%	878 61%
HERZ	1,381	0	827 60%	824 60%	809 59%	805 58%	843 61%	815 59%	807 58%	782 57%	786 57%	775 56%	769 56%
DAMONTE RANCH	2,235	0	1,935 87%	2,024 91%	1,954 87%	1,933 86%	1,903 85%	1,819 81%	1,820 81%	1,813 81%	1,809 81%	1,822 82%	1,809 81%
GALENA	1,882	0	1,194 63%	1,234 66%	1,303 69%	1,306 69%	1,270 67%	1,269 67%	1,235 66%	1,265 67%	1,273 68%	1,271 68%	1,250 66%



Major drainageway

No roadway connection between these neighborhoods

STEAMBOAT HWY

SIO WINDSOR PARK

Damonte Ranch HS





JD Higgins Photo

Saddle Ridge at Damonte Ranch
Temporarily closed

Quedup Entertainment

Advanced Inspections

Entertainment Technology Associates

LifeChurch Reno
South Campus

Google

Option #4 - Area E rezoned from Poulakidas ES to Rio Wrangler

Capacities and Projected enrollments, EXPANDED Rio Wrangler zone													
School	Capacities		Val. Day Enroll. 10/1/2021	Projected Enrollments									
	Max.	Add. Temp.		2022/23	2023/24	2024/25	2025/26	2026/27	2027/28	2028/29	2029/30	2030/31	2031/32
BROWN	632	250	627	678	471	478	461	441	409	406	410	413	425
			99%	107%	75%	76%	73%	70%	65%	64%	65%	65%	67%
DOUBLE DIAMOND	717	0	542	545	558	560	565	568	566	571	578	583	592
			76%	76%	78%	78%	79%	79%	79%	80%	81%	81%	83%
POULAKIDAS	657	200	845	867	570	574	559	558	553	568	579	588	602
			129%	132%	87%	87%	85%	85%	84%	86%	88%	89%	92%
RIO WRANGLER	657	0	0	0	552	564	575	583	583	583	583	583	583
			0%	0%	84%	86%	88%	89%	89%	89%	89%	89%	89%

Capacities and Projected enrollments, Option #4 - EXPANDED Rio Wrangler zone + Area E rezoned from Poulakidas ES to Rio Wrangler													
School	Capacities		Val. Day Enroll. 10/1/2021	Projected Enrollments									
	Max.	Add. Temp.		2022/23	2023/24	2024/25	2025/26	2026/27	2027/28	2028/29	2029/30	2030/31	2031/32
BROWN	632	250	627	678	471	478	461	441	409	406	410	413	425
			99%	107%	75%	76%	73%	70%	65%	64%	65%	65%	67%
DOUBLE DIAMOND	717	0	542	545	558	560	565	568	566	571	578	583	592
			76%	76%	78%	78%	79%	79%	79%	80%	81%	81%	83%
POULAKIDAS	657	200	845	867	498	502	487	486	481	496	507	516	530
			129%	132%	76%	76%	74%	74%	73%	75%	77%	79%	81%
RIO WRANGLER	657	0	0	0	624	636	647	655	655	655	655	655	655
			0%	0%	95%	97%	98%	100%	100%	100%	100%	100%	100%



Area C

Area D

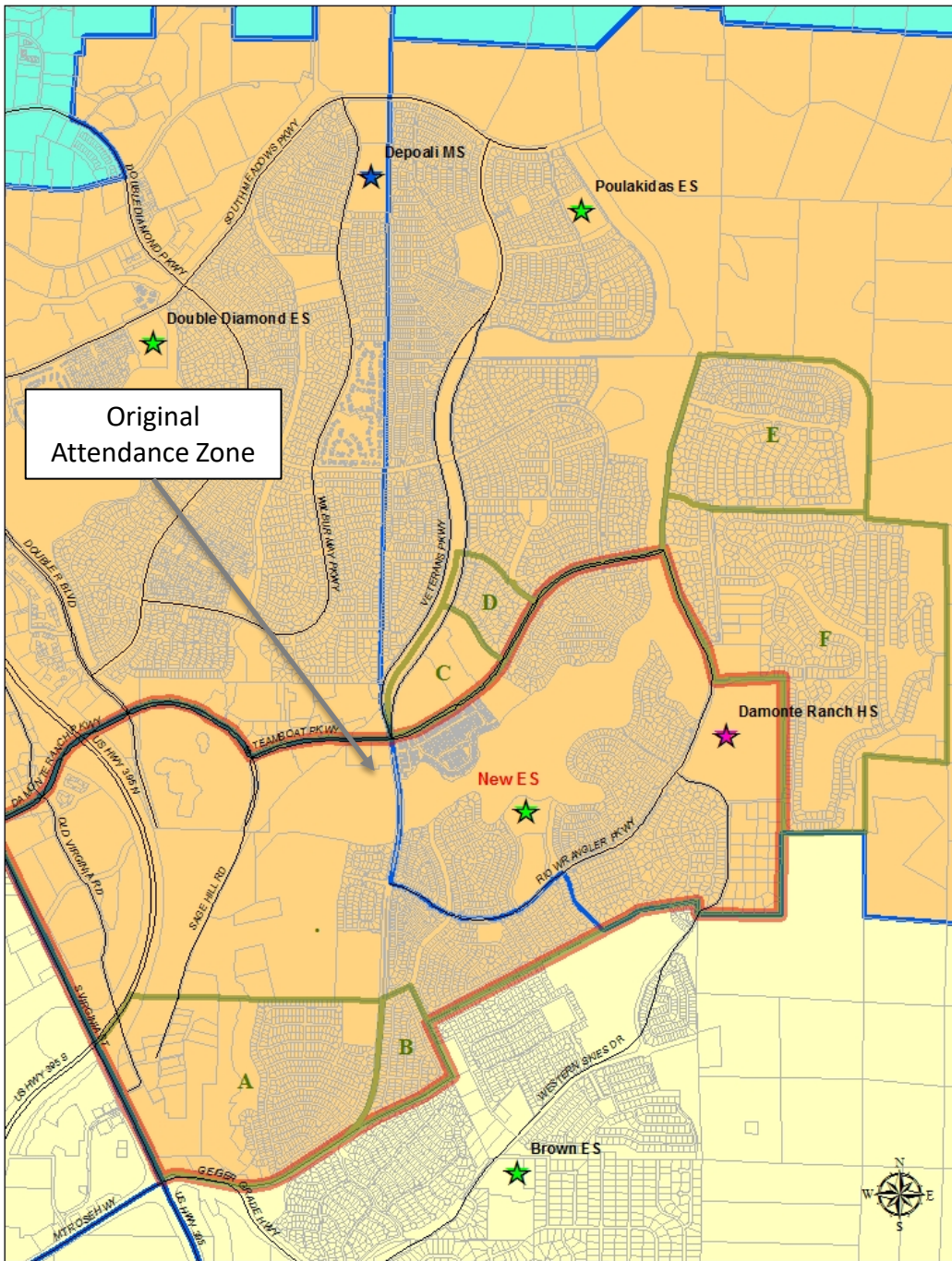
New School Site

Google

Option #5 - Areas C and D rezoned from Poulakidas ES to Rio Wrangler

Capacities and Projected enrollments, EXPANDED Rio Wrangler zone													
School	Capacities		Val. Day Enroll. 10/1/2021	Projected Enrollments									
	Max.	Add. Temp.		2022/23	2023/24	2024/25	2025/26	2026/27	2027/28	2028/29	2029/30	2030/31	2031/32
BROWN	632	250	627	678	471	478	461	441	409	406	410	413	425
			99%	107%	75%	76%	73%	70%	65%	64%	65%	65%	67%
DOUBLE DIAMOND	717	0	542	545	558	560	565	568	566	571	578	583	592
			76%	76%	78%	78%	79%	79%	79%	80%	81%	81%	83%
POULAKIDAS	657	200	845	867	570	574	559	558	553	568	579	588	602
			129%	132%	87%	87%	85%	85%	84%	86%	88%	89%	92%
RIO WRANGLER	657	0	0	0	552	564	575	583	583	583	583	583	583
			0%	0%	84%	86%	88%	89%	89%	89%	89%	89%	89%

Capacities and Projected enrollments, Option #5 - EXPANDED Rio Wrangler zone + Areas C & D E rezoned from Poulakidas ES to Rio													
School	Capacities		Val. Day Enroll. 10/1/2021	Projected Enrollments									
	Max.	Add. Temp.		2022/23	2023/24	2024/25	2025/26	2026/27	2027/28	2028/29	2029/30	2030/31	2031/32
BROWN	632	250	627	678	471	478	461	441	409	406	410	413	425
			99%	107%	75%	76%	73%	70%	65%	64%	65%	65%	67%
DOUBLE DIAMOND	717	0	542	545	558	560	565	568	566	571	578	583	592
			76%	76%	78%	78%	79%	79%	79%	80%	81%	81%	83%
POULAKIDAS	657	200	845	867	527	531	516	515	510	525	536	545	559
			129%	132%	80%	81%	79%	78%	78%	80%	82%	83%	85%
RIO WRANGLER	657	0	0	0	595	607	618	626	626	626	626	626	626
			0%	0%	91%	92%	94%	95%	95%	95%	95%	95%	95%



Area	Currently Zoned For:	Students currently attending zoned school:
A	Brown ES	115
	Depoali MS	61
	DRHS	54
B	Brown ES	43
	Depoali MS	19
	DRHS	25
C	Poulakidas ES	40
D	Poulakidas ES	3
E	Poulakidas ES	72
F	Poulakidas ES	70

**Option #6 - Areas C & D rezoned from Poulakidas ES to Rio Wrangler + Area B
remains zoned for Brown ES**

Capacities and Projected enrollments, Option #2 - EXPANDED Rio Wrangler zone													
School	Capacities		Val. Day Enroll. 10/1/2021	Projected Enrollments									
	Max.	Add. Temp.		2022/23	2023/24	2024/25	2025/26	2026/27	2027/28	2028/29	2029/30	2030/31	2031/32
BROWN	632	250	627 99%	678 107%	471 75%	478 76%	461 73%	441 70%	409 65%	406 64%	410 65%	413 65%	425 67%
DOUBLE DIAMOND	717	0	542 76%	545 76%	558 78%	560 78%	565 79%	568 79%	566 79%	571 80%	578 81%	583 81%	592 83%
POULAKIDAS	657	200	845 129%	867 132%	570 87%	574 87%	559 85%	558 85%	553 84%	568 86%	579 88%	588 89%	602 92%
RIO WRANGLER	657	0	0 0%	0 0%	552 84%	564 86%	575 88%	583 89%	583 89%	583 89%	583 89%	583 89%	583 89%
DEPOALI	1,450	0	876 60%	833 57%	831 57%	852 59%	879 61%	925 64%	953 66%	942 65%	924 64%	898 62%	897 62%
HERZ	1,381	0	827 60%	824 60%	790 57%	786 57%	824 60%	796 58%	788 57%	763 55%	767 56%	756 55%	750 54%
DAMONTE RANCH	2,235	0	1,935 87%	2,024 91%	1,979 89%	1,958 88%	1,928 86%	1,844 83%	1,845 83%	1,838 82%	1,834 82%	1,847 83%	1,834 82%
GALENA	1,882	0	1,194 63%	1,234 66%	1,278 68%	1,281 68%	1,245 66%	1,244 66%	1,210 64%	1,240 66%	1,248 66%	1,246 66%	1,225 65%

**Option #6 - Areas C & D rezoned from Poulakidas ES to Rio Wrangler + Area B
remains zoned for Brown ES**

Capacities and Projected enrollments, Option #6 - COMBINED OPTION													
School	Capacities		Val. Day Enroll. 10/1/2021	Projected Enrollments									
	Max.	Add. Temp.		2022/23	2023/24	2024/25	2025/26	2026/27	2027/28	2028/29	2029/30	2030/31	2031/32
BROWN	632	250	627	678	514	521	504	484	452	449	453	456	468
			99%	107%	81%	82%	80%	77%	72%	71%	72%	72%	74%
DOUBLE DIAMOND	717	0	542	545	558	560	565	568	566	571	578	583	592
			76%	76%	78%	78%	79%	79%	79%	80%	81%	81%	83%
POULAKIDAS	657	200	845	867	527	531	516	515	510	525	536	545	559
			129%	132%	80%	81%	79%	78%	78%	80%	82%	83%	85%
RIO WRANGLER	657	0	0	0	552	564	575	583	583	583	583	583	583
			0%	0%	84%	86%	88%	89%	89%	89%	89%	89%	89%
DEPOALI	1,450	0	876	833	812	833	860	906	934	923	905	879	878
			60%	57%	56%	57%	59%	62%	64%	64%	62%	61%	61%
HERZ	1,381	0	827	824	809	805	843	815	807	782	786	775	769
			60%	60%	59%	58%	61%	59%	58%	57%	57%	56%	56%
DAMONTE RANCH	2,235	0	1,935	2,024	1,954	1,933	1,903	1,819	1,820	1,813	1,809	1,822	1,809
			87%	91%	87%	86%	85%	81%	81%	81%	81%	82%	81%
GALENA	1,882	0	1,194	1,234	1,303	1,306	1,270	1,269	1,235	1,265	1,273	1,271	1,250
			63%	66%	69%	69%	67%	67%	66%	67%	68%	68%	66%

Summary of Options

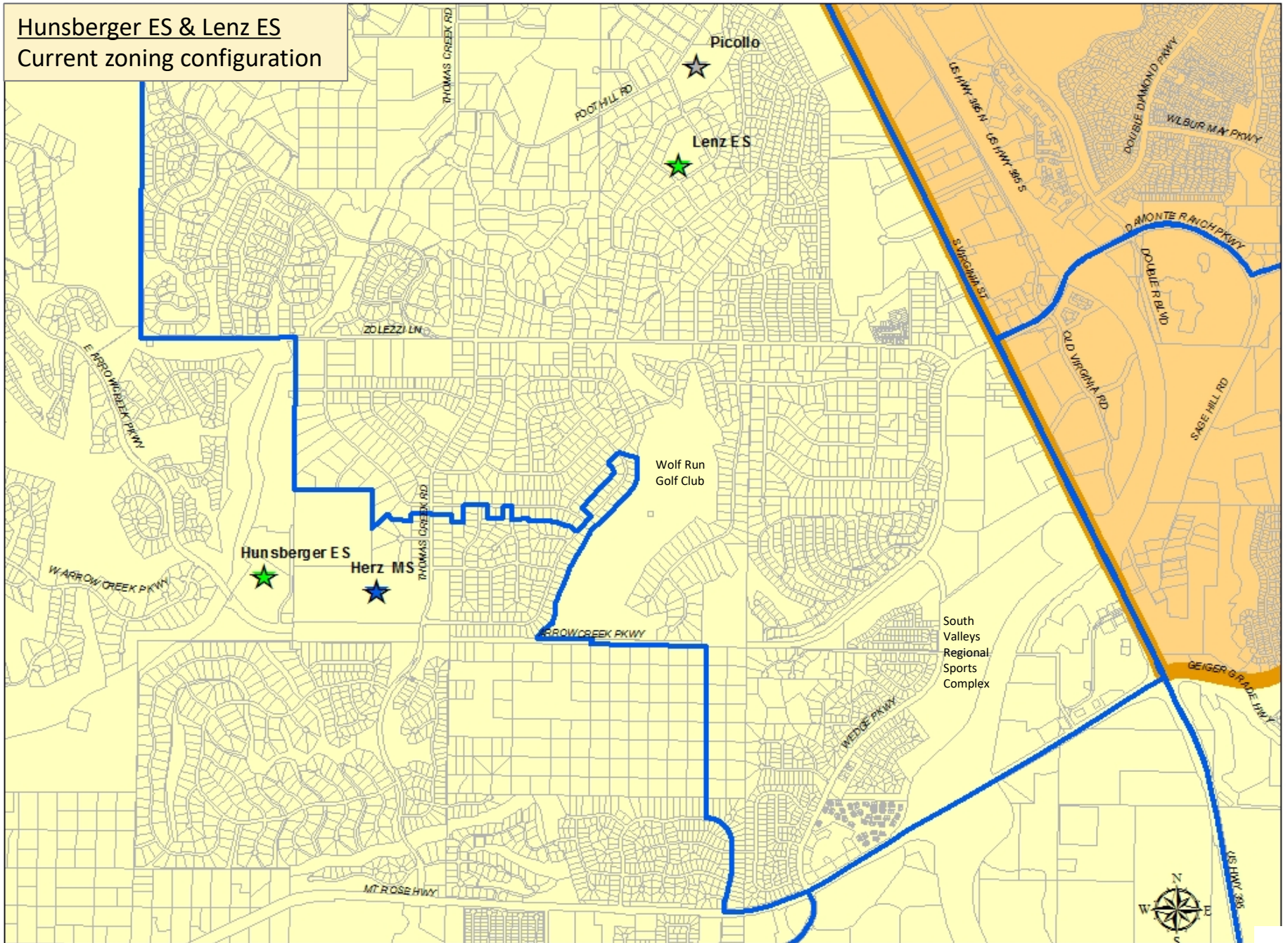
Option	Description	Students Impacted	Notes
1	Original Proposed Attendance Zone	454	Impacts the lowest number of students; does not fully relieve overcrowding at Poulakidas
2	Expanded Attendance Zone	524	All elementary schools are projected to be under maximum capacity through 2031/32; only Poulakidas in 2031/32 would be projected to be above 90% of capacity; STAFF RECOMMENDED OPTION
3ab	As with Option #2, but with the Curti Ranch area (Areas A&B) to remain zoned for Brown ES	525	Brown ES remains over capacity through 2025/26 and over 90% of capacity through 2031/32; Rio Wrangler would be under-utilized (<65% of capacity) through 2031/32; this option would require rezoning of students in these areas from Depoali MS to Herz MS and from Damonte Ranch HS to Galena HS
3a	As above, but with area on west side of Veteran's Parkway (Area A only) remaining in Brown	525	Brown remains above 90% of capacity through 2026/27; Rio Wrangler would be under-utilized (<70% of capacity) through 2031/32; this option would require rezoning of students in these areas from Depoali MS to Herz MS and from Damonte Ranch HS to Galena HS
3b	As above, but with area on east side of Veteran's Parkway (Area B only) remaining in Brown	525	All schools would remain under maximum capacity through 2031/32; this option would require rezoning of students in these areas from Depoali MS to Herz MS and from Damonte Ranch HS to Galena HS
4	As with Option #2, but with the additional rezone of the Saddleridge area (Area E) from Poulakidas ES to Rio Wrangler	596	Highest number of students impacted; Rio Wrangler would open at 95% of capacity (or higher) and would reach maximum capacity within four years
5	As with Option #2, but with the additional rezone of Harvest Apartments and adjacent SF neighborhood (Areas C&D) from Poulakidas ES to Rio Wrangler	567	Rio Wrangler would open at over 90% of capacity and is projected to remain at this level through 2031/32
6	Combined option - Option #2 + rezone of Areas C&D (Option #5) + Area B to remain zoned for Brown (Option #3b)	568	All elementary schools are projected to be under maximum capacity through 2031/32; this option would require rezoning of students in these areas from Depoali MS to Herz MS and from Damonte Ranch HS to Galena HS

Staff Recommendation

I move to rezone a portion of the Nick Poulakidas Elementary School and the Brown Elementary School attendance zones to create the attendance zone for the as-of-yet unnamed new elementary school on Rio Wrangler Parkway starting in the 2023/24 school year, corresponding to Option #2 as presented by staff.

Hunsberger & Lenz
Elementary Schools

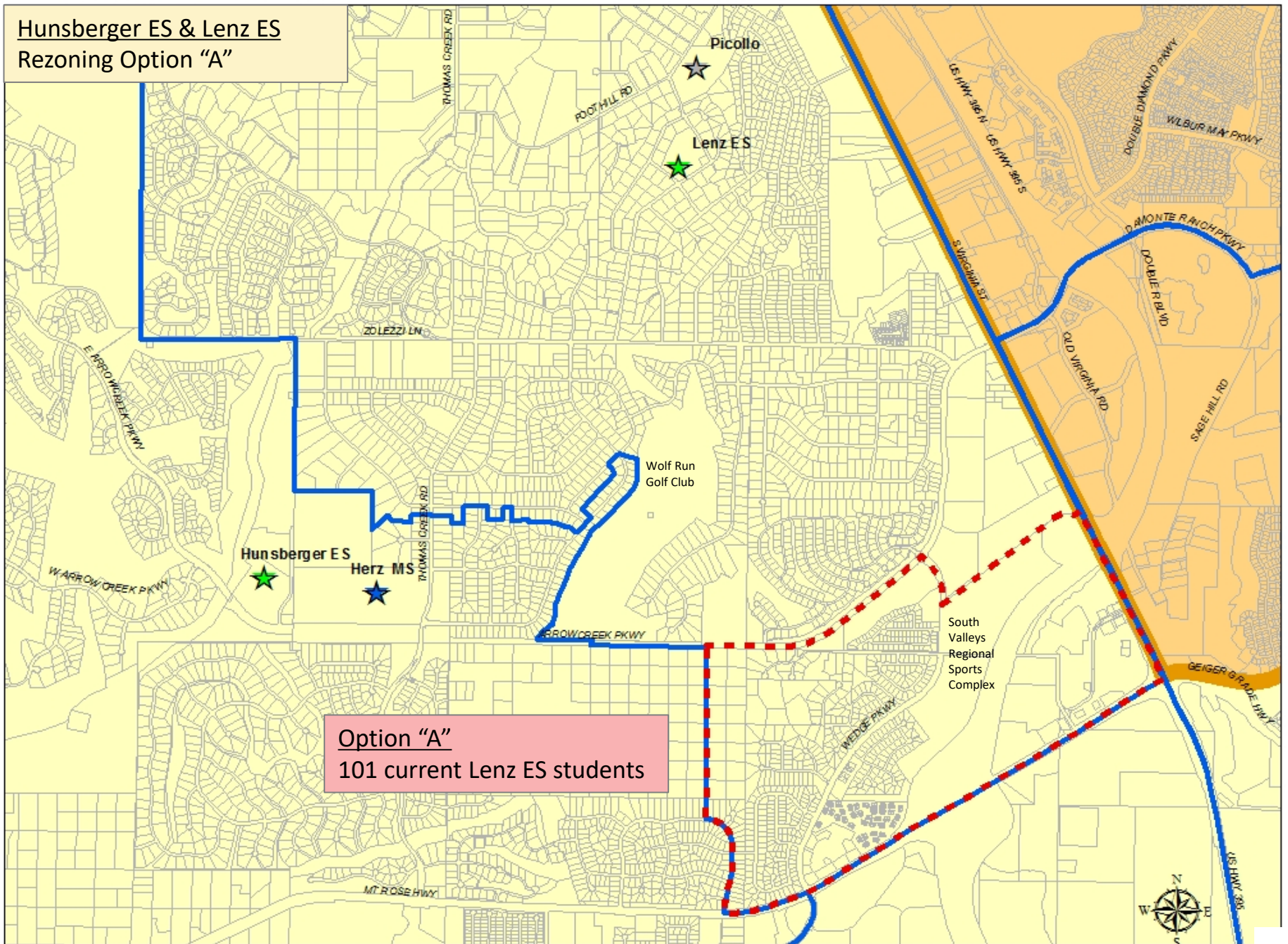
Hunsberger ES & Lenz ES
Current zoning configuration



Capacities and Enrollments, prior to any action

Capacities and Projected enrollments, prior to any further action													
School	Capacities		Val. Day Enroll. 10/1/2021	Projected Enrollments									
	Max.	Add. Temp.		2022/23	2023/24	2024/25	2025/26	2026/27	2027/28	2028/29	2029/30	2030/31	2031/32
HUNSBERGER	717	0	511	506	510	500	488	507	525	532	539	545	553
			71%	71%	71%	70%	68%	71%	73%	74%	75%	76%	77%
LENZ	486	50	502	519	499	497	481	478	475	482	488	493	501
			103%	107%	103%	102%	99%	98%	98%	99%	100%	101%	103%

Hunsberger ES & Lenz ES
Rezoning Option "A"



Capacities and Enrollments

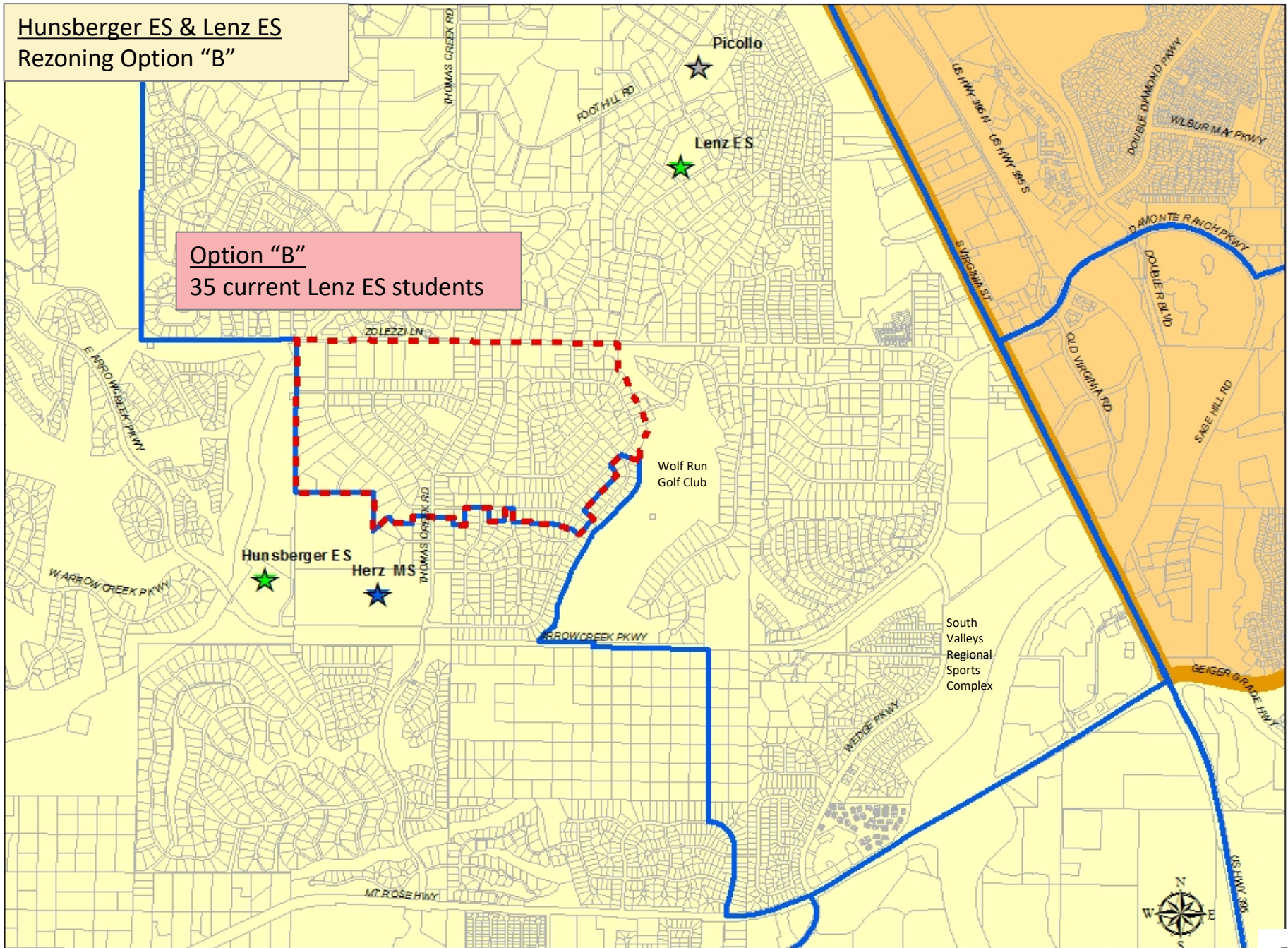
Lenz ES to Hunsberger ES

Option "A"

Capacities and Projected enrollments, after implementation of Option "A" in SY 2023/24													
School	Capacities		Val. Day Enroll. 10/1/2021	Projected Enrollments									
	Max.	Add. Temp.		2022/23	2023/24	2024/25	2025/26	2026/27	2027/28	2028/29	2029/30	2030/31	2031/32
HUNSBERGER	717	0	511	506	614	604	592	611	629	636	643	649	657
			71%	71%	86%	84%	83%	85%	88%	89%	90%	91%	92%
LENZ	486	50	502	519	395	393	377	374	371	378	384	389	397
			103%	107%	81%	81%	78%	77%	76%	78%	79%	80%	82%

Hunsberger ES & Lenz ES
Rezoning Option "B"

Option "B"
35 current Lenz ES students



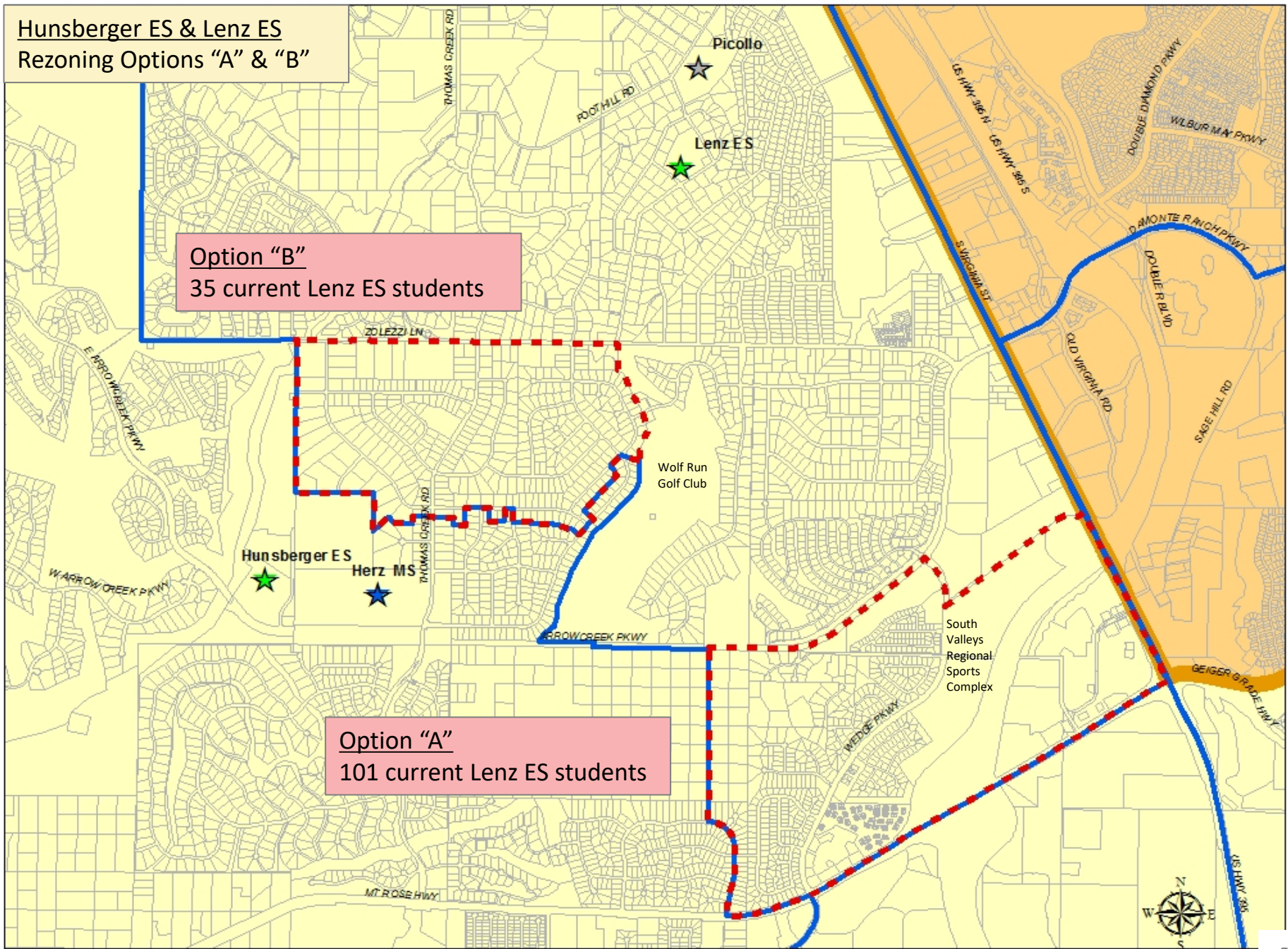
Capacities and Enrollments Lenz ES to Hunsberger ES Option "B"

Capacities and Projected enrollments, after implementation of Option "B" in SY 2023/24													
School	Capacities		Val. Day Enroll. 10/1/2021	Projected Enrollments									
	Max.	Add. Temp.		2022/23	2023/24	2024/25	2025/26	2026/27	2027/28	2028/29	2029/30	2030/31	2031/32
HUNSBERGER	717	0	511	506	541	545	535	524	544	563	571	578	584
			71%	71%	75%	76%	75%	73%	76%	79%	80%	81%	81%
LENZ	486	50	502	519	464	462	446	442	438	444	449	454	462
			103%	107%	95%	95%	92%	91%	90%	91%	92%	93%	95%

Hunsberger ES & Lenz ES
Rezoning Options "A" & "B"

Option "B"
35 current Lenz ES students

Option "A"
101 current Lenz ES students



Capacities and Enrollments

Lenz ES to Hunsberger ES

Options "A" & "B"

Capacities and Projected enrollments, after implementation of Options "A" and "B" in SY 2023/24													
School	Capacities		Val. Day Enroll. 10/1/2021	Projected Enrollments									
	Max.	Add. Temp.		2022/23	2023/24	2024/25	2025/26	2026/27	2027/28	2028/29	2029/30	2030/31	2031/32
HUNSBERGER	717	0	511	506	645	649	639	628	648	667	675	682	688
			71%	71%	90%	91%	89%	88%	90%	93%	94%	95%	96%
LENZ	486	50	502	519	380	360	358	341	337	333	339	345	350
			103%	107%	78%	74%	74%	70%	69%	69%	70%	71%	72%

THANK YOU!!!