

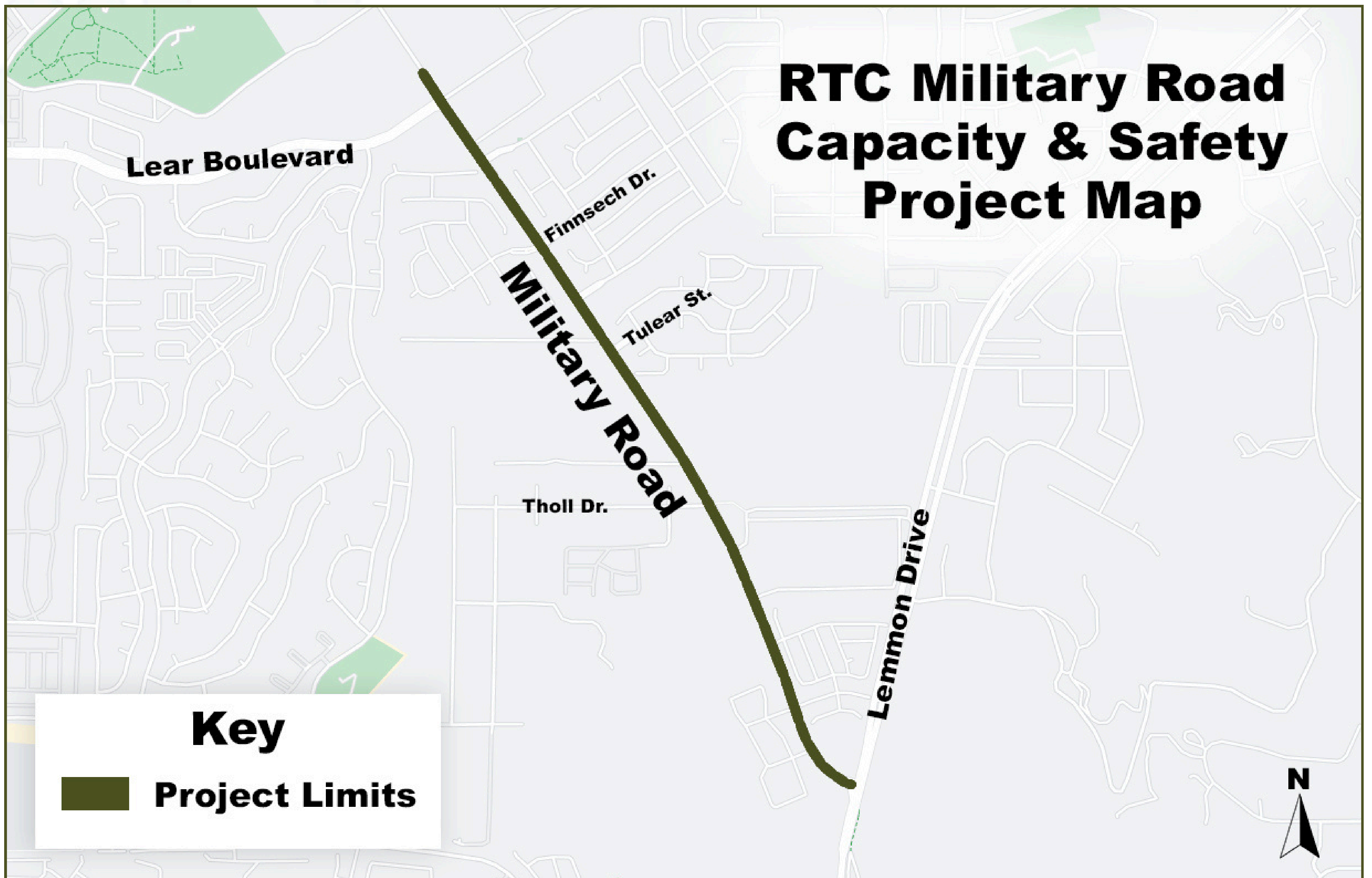


Welcome!

**Military Road Capacity
& Safety Project**

PUBLIC MEETING

**Thurs., May 7 from 5-7 p.m.
*Presentation at 5:30 p.m.***



Military Road is a key corridor carrying over 15,000 vehicles per day. This project is designed to improve how people move safely and efficiently through the area.

Project Limits: Military Road from Lemmon Drive to Lear Boulevard

Project will:

- Expand Military Road from 2 lanes to 4 lanes
- Add multimodal improvements for walking, biking, and rolling
- Upgrade intersections and drainage

Timeline: June 2026 - Fall 2027

Project cost: This project represents an investment of approximately \$35 million into our community, funded by Regional Road Impact Fees, which are paid by developers.



Scan
for more
information



Escanee
para obtener
más información



Los tableros de exhibición de reuniones están disponibles en español. Escanee el código para ver los tableros en línea a rtcwashoe.com.

Improvements



Primary Goals:

- Improve safety
- Increase capacity
- Enhance multimodal access

Key Benefits:

- Improved traffic flow
- Increased roadway capacity. (2 lanes to 4 lanes)
- Better pedestrian, bicycle, and scooter access
- Safer intersections
- Improved drainage systems

Intersection upgrades at:

- Lemmon Dr. (Fiber optic connectivity)
- Tulear St., Finnsech Dr., Lear Blvd. (New Traffic Signals)

Multimodal Improvements

- Shared-use path and sidewalk for full connectivity
- Flashing pedestrian beacons for crossing near Petal Blossom Dr. and Orchard Rock Dr.
- New crosswalks at minor side streets
- Safety lighting at driveways and streets intersecting the shared-use path

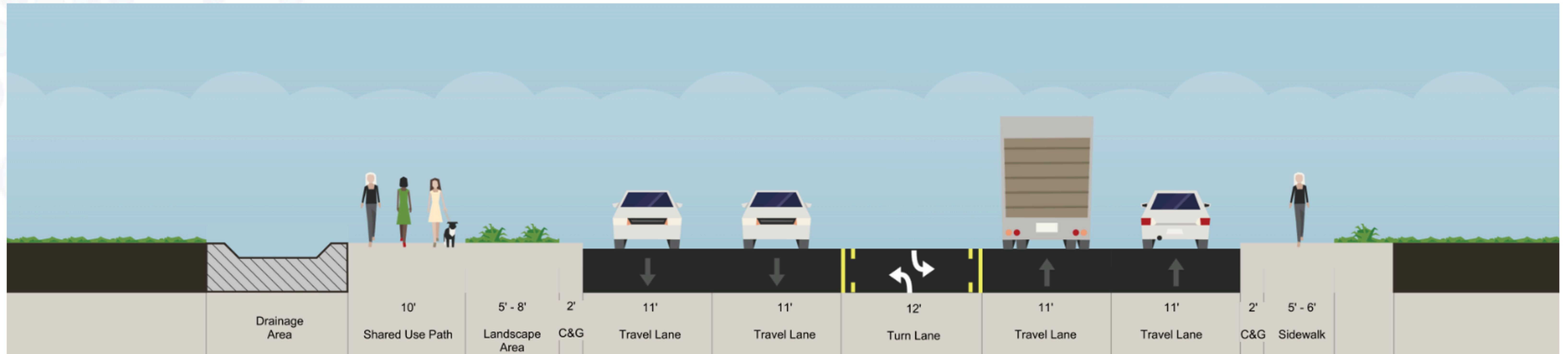
Drainage Improvements



- **New curb, gutter, and roadway grading**
- Adding **underground drainage** infrastructure
- Adding **roadside drainage channels** and ditches
- Connecting to existing underground drainage infrastructure
- **Goal: Move water from the roadway & prevent runoff impacts to adjacent properties**



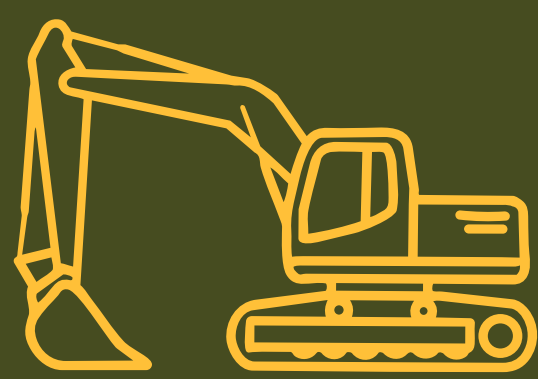
Roadway Design



- 4-lane widening from Lemmon Drive to Lear Boulevard. Includes center turn lanes where needed.
- Shared-use path (separated from roadway) and pedestrian facilities are included.
- This corridor allows for accessibility for pedestrians, bicyclists, and scooters, while increasing roadway capacity for vehicles.
- The design maximizes safety and accessibility and minimizes impacts to existing infrastructure where possible.



Construction



Work Plan

- Underground utilities and storm drain
- West side shared-use path, curb & gutter, side street work, then switch to the east side
- Paving/widening (2027) in four separate work zones



Traffic Control

- Maintain 1 lane of traffic in each direction
- Access to homes and businesses will be preserved



Working Hours

- Regular hours: Monday- Friday, 7 a.m. to 7 p.m.
- Weekend work - as needed. The project team will provide advance notice.



Completion

- Anticipated completion: Fall 2027



Contact Information

- Project webpage: rtcwashoe.com/project/military-road-capacity-safety/
- Sign up for project update emails: Sign up on the project webpage, or make sure you opted in when you signed in for this meeting.
- Project hotline: (775) 235-2686
- Project email: MilitaryRoadProject@rtcwashoe.com

