

pasa week

compiled by Pamela Beach,
pambeach@sfnewmexican.com
pasatiempomagazine.com

TO LIST EVENTS IN PASA WEEK:

Send an email or press release **two weeks** before our Friday publication date.

SUBMISSION GUIDELINES

Provide the following details for each event/occurrence:

- Time, day, and date
- Place/venue and address
- Website and phone number
- Brief description of events
- Tickets? Yes or no. How much?

All submissions are welcome, however, events are included in Pasa Week as space allows.



Paintings by Paul Pascarella, at David Richard Gallery, 544 S. Guadalupe St.

Friday, April 4

GALLERY/MUSEUM OPENINGS

Argos Studio/Gallery 1211 Luisa St., 505-988-1814. Works by faculty and students of Ryder Studio, reception 5-7:30 p.m., through May 2.

Charlotte Jackson Fine Art 554 S. Guadalupe St., 505-989-8688. *Heaven and Earth: Interference Paintings*, work by David Simpson, reception 5-7 p.m., through May 5.

David Richard Gallery 544 S. Guadalupe St., 505-983-9555. *Sensation*, group show, reception 5-7 p.m., through May 24.

Eggman & Walrus 130 W. Palace Ave., second floor, 505-660-0048. *Wax-Ability: Pushing the Boundaries of Encaustic Art*, group show, reception 5:30-9 p.m., through April 27.

Institute of American Indian Arts Sculpture Garden 83 Avan Nu Po Rd., 505-424-2300. Interdisciplinary site-specific installations by students, reception 4-7 p.m., through April 18.

Manitou Galleries 123 W. Palace Ave., 505-986-0440. *Colors of the High Desert*, new works by Harry Greene and Fran Larsen, reception 5-7:30 p.m., through April 18.

Richard Long Fine Art 715 Canyon Rd., *Cowboys and Indians*, paintings and sculpture by Reese Long, reception 5-7 p.m., through April 27.

CLASSICAL MUSIC

TGIF recital New Mexico School for the Arts students, 5:30 p.m., First Presbyterian Church of Santa Fe, 208 Grant Ave., donations welcome, 505-982-8544, Ext. 16.

IN CONCERT

Fourteenth Annual Nuestra Música El Rito musician Cipriano Frederico Vigil and others perform, 7 p.m., Lencic Performing Arts Center, 211 W. San Francisco St., \$10, discounts available, 505-988-1234, ticketssantafe.org. (See story, Page 20)

THEATER/DANCE

27th Annual Choreographers' Showcase Organized by New Mexico Dance Coalition; including Echo Gustafson, Monica Mondragon, Pomegranate Studios, and 3HC Holy Faith, 7:30 p.m., Railyard Performance Center, 1611-B Paseo de Peralta, \$10-\$15 sliding scale, tickets available at the door, Saturday encore.

The Lyons

Santa Fe Playhouse presents Nicky Silver's drama, 7:30 p.m., 142 E. De Vargas St., \$20, discounts available, 505-988-4262, santafeplayhouse.org, Thursdays-Sundays through April 13.

When the Stars Trembled in Río Puerco

Teatro Paraguas and Recuerdos Vivos New Mexico present a play by Shebana Coelho based on oral histories of the Río Puerco Valley collected by folk historian Nasario García, 7:30 p.m., Teatro Paraguas Studio, 3205 Calle Marie, \$15, discounts available, 505-424-1601, Fridays-Sundays through April 13.

BOOKS/TALKS

Maria Ignacia Jaramillo: A Tale of Two Coats The New Mexico History Museum First Friday Gallery Talk series continues with Collections and Education Manager René Harris' discussion of the historical figure, 5:30 and 6:30 p.m., New Mexico History Museum, 113 Lincoln Ave., no charge, 505-476-5200, nmhistorymuseum.org.

New Mexico Museum of Art gallery talk

Photographer Joan Myers discusses her work in the exhibit *Beneath Our Feet*, 5:30 p.m., 107 W. Palace Ave., no charge, 505-476-5072, nmartmuseum.org.

Wild Horse Film Showcase

Reception for the 2014 winners of the SkyDog Award for Equine Photography contest and screening of the documentary *El Caballo: The Wild Horses of North America*, 5-7 p.m., Collected Works Bookstore, 202 Galisteo St., 505-988-4226.

EVENTS

Randall Davey house tours

Docent-led tours, 2 p.m. weekly on Friday, Randall Davey Audubon Center, 1800 Upper Canyon Rd., \$5, RSVP to 505-983-4609.

NIGHTLIFE

(See Page 50 for addresses)

Cowgirl BBQ Americana band Bone Orchard, 8:30 p.m., no cover.

The Den

Ladies night with DJ Luna, 9 p.m., call for cover.



Pasa's Little Black Book.....	50	In the Wings.....	53
Elsewhere.....	52	At the Galleries.....	54
People Who Need People.....	52	Museums & Art Spaces.....	54
Pasa Kids.....	52	Exhibitionism.....	55

calendar guidelines

Please submit information and listings for *Pasa Week* no later than 5 p.m. Friday, two weeks prior to the desired publication date. Resubmit recurring listings every three weeks. Send submissions by mail to *Pasatiempo* Calendar, 202 E. Marcy St., Santa Fe, NM, 87501, by email to pasa@sfnewmexican.com, or by fax to 505-820-0803. *Pasatiempo* does not charge for listings, but inclusion in the calendar and the return of photos cannot be guaranteed. Questions or comments about this calendar? Call Pamela Beach, *Pasatiempo* calendar editor, at 505-986-3019; or send an email to pasa@sfnewmexican.com or pambeach@sfnewmexican.com. See our calendar at www.pasatiempomagazine.com, and follow *Pasatiempo* on Facebook and Twitter.

Duel Brewing Pray for Brain, Mustafa Stefan Dill on guitar and oud, Jefferson Voorhees on drums, and Chris Nelson on bass, indofunk/sufisurf fusion, 7-10 p.m., no cover.

El Farol
J.J. and the Hooligans, rock and blues, 9 p.m., call for cover.

Junction
Folk rockers The Bus Tapes, 10 p.m.-1 a.m., no cover.

La Fiesta Lounge at La Fonda
Country band Sierra, 8-11 p.m., no cover.

Lodge Lounge at The Lodge at Santa Fe
Pachanga! Club Fridays with DJ Gabriel "Aztec Sol" Ortega spinning salsa, cumbia, bachata, and merenge, dance lesson, 8:30-9:30 p.m., call for cover.

Palace Restaurant & Saloon
Nashville singer Tawnya Reynolds, 10 p.m., call for cover.

Pranzo Italian Grill
David Geist, piano and vocals, 6-9 p.m., call for cover.

Second Street Brewery
Alternative-country band Boris & The Saltlicks, 6-9 p.m., no cover.

Second Street Brewery at the Railyard
Kodama Trio, jazz, 7-10 p.m., no cover.

Shadeh
DJ 12 Tribe, 9 p.m.-4 a.m., call for cover.

Tiny's
Jazz guitarist Marc Yaxley, 5:30 p.m.; classic-rock band The Jakes, 8:30 p.m.; no cover.

5 Saturday

GALLERY/MUSEUM OPENINGS

Santa Fe Botanical Garden
715 Camino Lejo, Museum Hill, 505-471-9103. *Birds in the Garden*, site-specific installation by ceramicist Christy Hengst, reception 3-5 p.m., through April 23.

A Sea Gallery
407 S. Guadalupe St., 505-988-9140. *Heart, Trees... and Rain*, paintings by Monika Steinhoff, reception 3-6 p.m.

Tina Davila Pottery
933 Nicole Place, 505-986-9856. Open studio and sale 10 a.m.-4 p.m.

CLASSICAL MUSIC

The Met at the Lencic
The season continues with Puccini's *La Bohème*, the Lencic, 11 a.m. and 6 p.m., \$22-\$28, ticketssantafe.org, 505-988-1234.

IN CONCERT

Awna Teixeira and Dan Bern
Singer/songwriters, 7 p.m., Gig Performance Space, 1808-H Second St., \$25 in advance at brownpapertickets.com.

Metalachi
Hard-rock mariachi band, 8 p.m., Santa Fe Old Stage & Grill, 37 Fire Place, \$10 in advance, holdmyticket.com, 21+. (See story, Page 24)

THEATER/DANCE

27th Annual Choreographers' Showcase
Organized by New Mexico Dance Coalition; including Echo Gustafson, Monica Mondragon, Pomegranate Studios, and 3HC Holy Faith,

7:30 p.m., Railyard Performance Center, 1611-B Paseo de Peralta, \$10-\$15 sliding scale, tickets available at the door.

The Lyons
Santa Fe Playhouse presents Nicky Silver's drama, 7:30 p.m., 142 E. De Vargas St., \$20, discounts available, 505-988-4262, santafeplayhouse.org, Thursdays-Sundays through April 13.

When the Stars Trembled in Río Puerco
Teatro Paraguas and Recuerdos Vivos New Mexico present a play by Shebana Coelho based on oral histories of the Río Puerco Valley collected by folk historian Nasario García, 7:30 p.m., Teatro Paraguas Studio, 3205 Calle Marie, \$15, discounts available, 505-424-1601.

BOOKS/TALKS

National Poetry Month
Angela Janda reads from her collection *Small Acts of the Gods*, 1 p.m., Santa Fe Arts Commission Community Gallery, 201 W. Marcy St., no charge, 505-955-6707.

Opera Breakfast Lecture
The series continues with Tom Franks' discussion of Puccini's *La Bohème*, 9:30 a.m., Collected Works Bookstore, 202 Galisteo St., \$5 donation at the door, 505-988-4226.

Robert Mills
The Santa Fe author reads from *First and Last Love: Thoughts and Memories About Music*, 4 p.m., Op. Cit. Books, 500 Montezuma Ave., Sanbusco Center, 505-428-0321.

Santa Fe Council on International Relations lecture *Women Political Leaders in Asia: Are They Gender Game Changers?*, with Vassar sociology professor Seungsook Moon, 3 p.m., Santa Fe Woman's Club, 1616 Old Pecos Trail, \$20, 505-982-4931, sfcir.org.

OUTDOORS

Enchanted Hikes The City of Santa Fe Recreation Division offers easy to moderate treks along the following trails: Dale Ball, Dorothy Stewart, Tesuque Creek, and Galisteo Basin Preserve; Session I, Thursdays through April 24, 4-6 p.m.; Session II, Saturdays through April 26, 10 a.m.-noon, preregister at Genoveva Chavez Community Center, 3221 Rodeo Rd., \$6.50 per hike or \$20 for full session, contact Michelle Rogers for registration information, 505-955-4047.

EVENTS

Wild Horse Film Showcase
Four documentary films, beginning at 10:30 a.m., New Mexico History Museum Auditorium, 113 Lincoln Ave., \$5 each, \$15 for all four, 505-988-1234, ticketssantafe.org, visit cimarronskydog.org for details.

NIGHTLIFE

(See addresses below)

Anasazi Restaurant & Bar
Guitarist Jesus Bas, 7-10 p.m., no cover.

¡Chispa! at El Mesón Flamenco Conpaz Troupe, 7-10 p.m., call for cover.

Cowgirl BBQ Gregg Daigle Band, 2-5 p.m.; Slow Motion Cowboys, 8:30 p.m.; no cover.

Duel Brewing Contemporary Balkan folk ensemble Rumelia, 7-10 p.m., no cover.

El Farol
C.S. Rockshow, featuring Don Curry, Pete Springer, and Ron Crowder, 9 p.m., call for cover.

La Fiesta Lounge at La Fonda
Country band Sierra, 8-11 p.m., no cover.



La Posada de Santa Fe Resort and Spa
Pat Malone Jazz Trio, featuring vocalist Whitney Carroll Malone, 6-9 p.m., call for cover.

Palace Restaurant & Saloon
Neil Young tribute band Drastic Andrew & The Cinnamon Girls, 10 p.m., call for cover.

Pranzo Italian Grill
David Geist, piano and vocals, 6-9 p.m., call for cover.

Second Street Brewery
Pollo Frito, New Orleans jazz and funk, 6-9 p.m., no cover.

Second Street Brewery at the Railyard
Broomdust Caravan, cosmic Americana, 7-10 p.m., no cover.

Shadeh
DJ Flo Fader, 9 p.m.-4 a.m., call for cover.

Sweetwater Harvest Kitchen
John Serkin, Hawaiian slack-key guitar, 6 p.m., no cover.

Tiny's Showcase karaoke with Nanci and Cyndi, 8:30 p.m., no cover.

6 Sunday

GALLERY/MUSEUM OPENINGS

Museum of International Folk Art
706 Camino Lejo, Museum Hill, 505-476-1200.
Wooden Menagerie: Made in New Mexico, early 20th-century carvings, reception 1-4 p.m., through Feb. 15, 2015.

IN CONCERT

Celebration of the Enduring American Popular Song Vocalists Patty Stephens and David Jenness with the John Rangel Trio, 4 p.m., Vanessa, 427 W. Water St., \$25 in advance online at santafebotanicalgarden.org and at the door, proceeds benefit Santa Fe Botanical Garden. 505-471-9103.

Melanie Monsour
Piano recital with Paul Brown on bass, noon-2 p.m., Museum Hill Café, 710 Camino Lejo, no charge, melaniemonsour.com.

THEATER/DANCE

Luma
Experimental-light theater performance, 2 and 7 p.m., the Lentic, \$15-\$35, discounts available, 505-988-1234, ticketssantafe.org.

The Lyons
Santa Fe Playhouse presents Nicky Silver's drama, 4 p.m., 142 E. De Vargas St., \$20, discounts available, 505-988-4262, santafeplayhouse.org, Thursdays-Sundays through April 13.

When the Stars Trembled in Río Puerco
Teatro Paraguas and Recuerdos Vivos New Mexico present a play by Shebana Coelho based on oral histories of the Río Puerco Valley collected by folk historian Nasario García: *Share Your Recuerdos*, open-mic event precedes the performance, 4 p.m., Teatro Paraguas Studio, 3205 Calle Marie, pay-what-you-wish, 505-424-1601.

BOOKS/TALKS

Ann Filemyr
The poet reads from and signs copies of *Love Enough*, 4 p.m., Op. Cit. Books, 500 Montezuma Ave., Suite 101, Sanbusco Center, 505-428-0321.

Journey Santa Fe Presents
A discussion with James Keele on *What About Electric Vehicles?* and with Dan Baker on *Better Living With Electric Vehicles*, 11 a.m., Collected Works Bookstore, 202 Galisteo St., 505-988-4226.



Carl Moore: *Trinidad*, Chiaroscuro Contemporary, 702½ Canyon Rd.

EVENTS

Santa Fe Men's Camerata benefit
The choral ensemble performs pop selections and folk music, noon-3 p.m., Hotel Santa Fe, 1501 Paseo de Peralta, \$30 includes lunch and silent auction, \$10 for auction only, tickets available in advance and at the door, call Karen Marrolii, 225-571-6352.

NIGHTLIFE

(See Page 50 for addresses)

Cowgirl BBQ

John Prine tribute with Boris & The Saltlicks, noon-3 p.m.; Charlie Mile Trio, jam band, 8 p.m., no cover.

El Farol

Chanteuse Nacha Mendez, 7:30 p.m., call for cover.

La Posada de Santa Fe Resort and Spa
Guitarist Wily Jim, Western swingabilly, 7-10 p.m., no cover.

7 Monday

IN CONCERT

The Mavericks
Veteran country/rock/Tex-Mex-fusion band, 7:30 p.m., the Lentic, \$36-\$54, 505-988-1234, ticketssantafe.org.

BOOKS/TALKS

April Author Series
Science-fiction author Connie Willis reads from and answers questions about *Blackout/All Clear*, 7 p.m., Jean Cocteau Cinema, 418 Montezuma Ave., 505-466-5528.

Breakfast With O'Keeffe

The gallery talk series continues with *Abiquiú: A Brief History*, presented by historian Virgil Trujillo, 8:30 a.m., Georgia O'Keeffe Museum, 217 Johnson St., by museum admission, 505-946-1039.

Southwest Seminars lecture

The series continues with *Ceramic Ecology From Clay to Sherd: Making & Breaking Pots in the Name of Southwest Archaeology*, with archaeologist Eric Blinman, 6 p.m., Hotel Santa Fe, 1501 Paseo de Peralta, \$12 at the door, 505-466-2775, southwestseminars.org.

EVENTS

Swing dance

Weekly all-ages informal swing dance, lessons 7-8 p.m., dance 8-10 p.m., Odd Fellows Hall, 1125 Cerrillos Rd., dance only \$3, lesson and dance \$8, 505-473-0955.

NIGHTLIFE

(See Page 50 for addresses)

Duel Brewing James T. Baker, Delta blues, with Raven Redfox, 6-9 p.m., no cover.

El Farol

Tiho Dimitrov, R & B, 8:30 p.m., no cover.

La Fiesta Lounge at La Fonda
Bill Hearne Trio, classic country, 7:30 p.m., no cover.

8 Tuesday

BOOKS/TALKS

David Allen Sibley
The author and illustrator discusses his second edition of *The Sibley Guide to Birds*, 5 p.m., Garcia Street Books, 376 Garcia St., 505-986-0151.

School for Advanced Research lecture
Chasing History: Quixotic Quests for Artifacts, Art, and Heritage, by historian Thomas E. Chavez, 3 p.m., 660 Garcia St., no charge, 505-954-7200.

NIGHTLIFE

(See Page 50 for addresses)

¡Chispa! at El Mesón
Argentine Tango Milonga, 7:30 p.m., no cover.

Cowgirl BBQ

Sweetwater String Band, bluegrass, 8 p.m., no cover.

El Farol

Canyon Road Blues Jam, 8:30 p.m., call for cover.

Second Street Brewery at the Railyard
Open-mic song night with Ben Wright, 8 p.m., no cover.

Tiny's

Song Circle, monthly open-mic song swap hosted by Percolator John, 7-9 p.m., no cover.

Zia Diner

Weekly Santa Fe bluegrass jam, 6-8 p.m., no cover.

9 Wednesday

GALLERY/MUSEUM OPENINGS

Santa Fe Community College
6401 Richards Ave., 505-428-1501. *Bees and Flowers*, micrographic photography by high school students in The Masters Program, reception 4-6 p.m., through April 11.

IN CONCERT

Tatsuya Nakatani and Jeff Sussmann & Al Faaet Solo and duet percussion sets, 8 p.m., doors open at 7:30 p.m., High Mayhem Studio, 2811 Siler Rd., \$10 suggested donation at the door.

BOOKS/TALKS

Taos Society of Artists: Joseph Henry Sharp The docent-led Artist of the Week series continues with a discussion of the late painter, 12:15 p.m., New Mexico Museum of Art, 107 W. Palace Ave., by museum admission, 505-476-5075.

Walter W. Nelson

The photographer launches his monograph *The Black Place: Two Seasons* with a presentation and signing with contributors author Douglas Preston and Katherine Ware, New Mexico Museum of Art photography curator, 6 p.m., Collected Works Bookstore, 202 Galisteo St., 505-988-4226.

NIGHTLIFE

(See Page 50 for addresses)

¡Chispa! at El Mesón

Singer/guitarist Jesús Bas, 7-9 p.m., no cover.

Cowgirl BBQ

Loves It!, folk/country/swing band, 8 p.m., no cover.

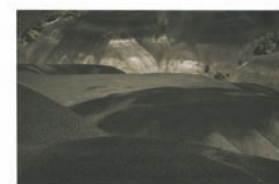
Duel Brewing Anthony Leon and Joe West, indie rock, 7-10 p.m., no cover.

El Farol

Guitarist/singer John Kurzweg, 8:30 p.m., no cover.



Talking Heads



THE BLACK PLACE: TWO SEASONS
PHOTOGRAPHS BY WALTER W. NELSON
TEXT BY DOUGLAS PRESTON AND KATHERINE WARE

The Black Place: Two Seasons

Photographer **Walter W. Nelson** launches his monograph on the remote Northwest New Mexico badlands on the Navajo Reservation with a reading and signing at **6 p.m. Wednesday, April 9**, at Collected Works Bookstore, 202 Galisteo St. Contributors author Douglas Preston and Katherine Ware, New Mexico Museum of Art photography curator, join in the presentation.



Chatter Cabaret presents pianist Keith Snell on Sunday, April 6, at The Kosmos, 1715 Fifth St. N.W., Albuquerque.

Iconik Coffee Roasters Ravensong; a monthly singer/songwriter showcase hosted by Dave Tutin, 7 p.m., no cover.

Junction Karaoke Night hosted by Michelle, 10 p.m.-1 a.m., no cover.

La Fiesta Lounge at La Fonda Bill Hearne Trio, classic country, 7:30-11 p.m., no cover.

Zia Diner Guitarist Gary Gorence, rock and blues, 6:30-8:30 p.m., no cover.

10 Thursday

IN CONCERT

Jacob Fred Jazz Odyssey and the Mike Dillon Band Instrumental trio and quartet, 7 p.m., Warehouse 21, 1614 Paseo de Peralta, call 505-989-4423 for ticket information.

THEATER/DANCE

The Lyons

Santa Fe Playhouse presents Nicky Silver's drama, 7:30 p.m., 142 E. De Vargas St., \$20, discounts available, 505-988-4262, santafeplayhouse.org, Thursdays-Sundays through April 13.

EVENTS

Santa Fe Community College Planetarium program *How to Select and Use a Telescope*, Q & A and demonstration, 8 p.m., Santa Fe Community College, 6401 Richards Ave., \$5 at the door, discounts available, 505-428-1744.

NIGHTLIFE

(See Page 50 for addresses)

¡Chispa! at El Mesón

Jazz pianist John Rangel, 7-9 p.m., no cover.

Cowgirl BBQ Bartender 4 Mayor, classic country and redneck rock, 8 p.m., no cover.

Duel Brewing

Connie Long and Fast Patsy, country with a twist of rockabilly and blues, 7-10 p.m., no cover.

El Farol Guitarras con Sabor, Gypsy Kings style, 8 p.m., no cover.

La Fiesta Lounge at La Fonda

Bill Hearne Trio, classic country, 7:30-11 p.m., no cover.

La Posada de Santa Fe Resort and Spa

Pat Malone Trio, Kanoa Kaluhiwa on saxophone, Asher Barreras on bass, and Malone on guitar, 6-9 p.m., call for cover.

Low 'n' Slow Lowrider Bar at Hotel

Chimayó Tenor guitarist and flutist Gerry Carthy, 9 p.m., no cover.

Palace Restaurant & Saloon

Thursday limelight karaoke, 10 p.m., no cover.

Tiny's

R & B band The Jakes, 8 p.m., no cover.

Zia Diner

Swing Soleil, Gypsy jazz & swing, 6:30-8:30 p.m., no cover.

► Elsewhere

ALBUQUERQUE

Joshua Redman Quartet

Jazz saxophonist, 7 p.m. Friday, April 4, Outpost Performance Space, 210 Yale Blvd. S.E., \$30, student discounts available, 505-268-0044, outpostspace.org.

New Mexico Philharmonic

2013-2014 classics series: Brahms' Symphony No. 2, 6 p.m. Saturday, April 5, KiMo Theatre, 423 Central Ave. N.W., \$20 and \$30, student discounts available; 2 p.m. Sunday, April 6, music of Vivaldi and Schubert, featuring oboist Kevin Vigneau, National Hispanic Cultural Center, 1701 Fourth St. S.W., \$24-\$68, nhccnm.org.

Pavlo

Greek guitarist, 8 p.m. Saturday, April 5, Outpost Performance Space, 210 Yale Blvd. S.E., \$17 in advance, \$22 day of show, amponcerts.org or holdmyticket.com, 505-886-1251.

Chatter Sunday

Keith Snell performs left-hand piano concertos of Donizetti, Scriabin, and Schulhoff, 10:30 a.m. Sunday, April 6, reading by poet Bruce Noll follows, The Kosmos, 1715 Fifth St. N.W., \$15 at the door, discounts available, chatterabq.org.

2014 John Donald Robb Composers' Symposium

UNM presents nightly concerts, daytime workshops, panel discussions, and master classes April 5-10; John Donald Robb's Piano Quintet kicks off the concerts at 5 p.m. Sunday, April 6, UNM Center for the Arts; another noteworthy concert is the multimedia chamber opera *Cuatro Corridos* performed at South Broadway Cultural Center, 7 p.m. Monday, April 7 (call 505-848-1320 for reservations); visit robbtrust.org for details. (See Listen Up, Page 28)

Chatter Cabaret

Part 1, variations on composers Mozart, Gounod, and Gershwin, part 2, *Knee Plays* from Glass' opera *Einstein on the Beach*, 5 p.m. Sunday, April 6, Hotel Andaluz, 125 Second St. N.W., \$25, brownpapertickets.com.

South Broadway Cultural Center

1025 Broadway Blvd. S.E., 505-848-1320. *Sanctuary — A Personal Journey*, group exhibit including works by Patrick Nagatani and Holly Roberts, reception 6-8 p.m. Thursday, April 10, through May.

MADRID

Johnsons of Madrid

2843 NM 14, 505-471-1054. Group shows: *4 Artists, 4 Walls*; works by *Collector's Guide* artists; *100 Northern New Mexico Gallery Artists*; reception 3-5 p.m. Saturday, April 5.

TAOS

Harwood Museum of Art: Day of Wonder and Art

Interactive gallery activities, live music, performances, and treasure hunts, 11 a.m.-2 p.m. Saturday, April 5, 238 Ledoux St., no charge, 575-758-9826, harwoodmuseum.org.

Reverend Horton Heat

Texas psychobilly trio, Two Ton Strap opens, 7 p.m. Sunday, April 6, Taos Mesa Brewing, 20 ABC Mesa Rd., El Prado, \$15, 575-758-1900, taosmesabrewing.com.

► People who need people

Community

Nominations for Santa Fe Community Foundation's 28th Annual Piñon Awards

Honoring Santa Fe and Northern New Mexico nonprofit organizations; four categories: Courageous Innovation, Quiet Inspiration, Visionary, and Tried-and-True; visit santafecf.org for guidelines and nomination forms, April 15 deadline.

Volunteers

American Cancer Society

Training offered in support of the Cancer Resource Center at Christus St. Vincent Cancer Center; various shifts available during business hours Mondays-Fridays; call Geraldine Esquivel for details, 505-463-0308.

Fight Illiteracy

Literacy Volunteers of Santa Fe will train individuals willing to help adults learn to read, write, and speak English; details available online at lvsf.org, or call 505-428-1353.

Food for Santa Fe

The nonprofit needs help packing and distributing groceries between the hours of 6 and 8 a.m. Wednesdays and Thursdays, 505-471-1187 or 505-603-6600.

The Hospice Center

Assist in the office entering data for the volunteer program for a limited number of hours either weekly or biweekly; basic computer skills required; call Mary Ann at 505-988-2211.

Plant a Row for the Hungry

A Food Depot program encouraging home gardeners to plant extra produce for donation to the organization; 505-471-1633.

St. Elizabeth Shelter

Help with meal preparation at residential facilities and emergency shelters; other duties also available; contact Rosario, 505-982-6611, Ext. 108, volunteer@steshelter.org.

► Pasa Kids

Santa Fe Children's Museum

Weekly events including open art studio, drama club, jewelry-making club, and preschool programs, 1050 Old Pecos Trail, by museum admission, 505-989-8359, santafechildrensmuseum.org.

Opera Makes Sense: Journey to Italy

With *Don Pasquale* Children ages 3-5 and their caregivers can learn about opera through dance, song, music, costumes, and art projects. Stieren Hall, Santa Fe Opera, 301 Opera Dr., no charge, RSVP to aquintana@santafeopera.org.

New Mexico Museum of Art Family

Activity Day Learn how and why the museum works with discussions and tours by museum staff, and participate in a hands-on class to make your own miniature gallery, 1 p.m. Sunday, April 6, 107 W. Palace Ave., no charge, 505-476-5072.

Children's Story Hour

Readings from picture books for children up to age 5; 10:45-11:30 a.m. weekly on Wednesdays and Thursdays, Collected Works Bookstore, 202 Galisteo St. no charge, 505-988-4226. ◀

In the wings



MUSIC

Serenata of Santa Fe *Spring for Mozart*, music of Pärt, Schnittke, and Mozart, 7 p.m. Friday, April 11, Scottish Rite Center, 463 Paseo de Peralta, \$25, 505-988-1234, ticketssantafe.org.

Lori Carsillo Jazz vocalist, with Bert Dalton on piano, Jon Gagan on bass, and John Trentacosta on drums, 7 p.m. Friday, April 11, Museum Hill Café, 710 Camino Lejo, \$25, 505-983-6820, santafemusiccollective.org.

Santa Fe Community Orchestra Choral arrangement of Mendelssohn's *Elijah*, with baritone Carlos Archuleta, soprano Christina Martos, and mezzo-soprano Jacqueline Zander-Wall, 7:30 p.m. Saturday, April 12, Cathedral Basilica of St. Francis of Assisi, 131 Cathedral Place, donations accepted, 505-466-4879, sfco.org.

Santa Fe Symphony Steven Smith returns to lead the orchestra in Mahler's *Symphony No. 7*, 4 p.m. Sunday, April 13, the Lensic, \$22-\$76, half-price tickets available for youths ages 6-14, 505-988-1234, ticketssantafe.org.

Taina Asili y la Banda Rebelde Afro-Latin fusion band, 8 p.m. Sunday, April 13, Santa Fe Sol Stage & Grill, 37 Fire Place, \$10, solofsantafe.com, 21+.

Neko Case Singer/songwriter, with The Dodos, 7:30 p.m. Monday, April 14, the Lensic, \$34-\$44, 505-988-1234, ticketssantafe.org.

Rickie Lee Jones Singer/songwriter, 7:30 p.m. Thursday, April 17, the Lensic, \$40-\$60, 505-988-1234, ticketssantafe.org.



Rock band Living Colour on stage at 8 p.m. Saturday, April 19, Santa Fe University of Art & Design, 1600 St. Michael's Dr., no charge, required tickets can be picked up at the Lensic Performing Arts Center box office.

Santa Fe Pro Musica Baroque Ensemble Featuring soprano Kathryn Mueller, 7:30 p.m. Thursday and Friday, 6 p.m. Saturday, April 17-19, Loretto Chapel, 207 Old Santa Fe Trail, \$20-\$65, 505-988-1234, ticketssantafe.org, 505-988-4640.

Bobby Shew Quartet Plays Chet Baker Local trumpeter, with John Proulx on piano, Michael Glynn on bass, and Cal Haines on drums, 7 p.m. Friday, April 18, Harwood Museum of Art, 238 Ledoux St., \$25, 575-758-9826, harwoodmuseum.org.

David Berkeley Singer/songwriter, 8 p.m. Saturday, April 19, High Mayhem Emerging Arts, 2811 Siler Lane, \$12, students \$8, brownpapertickets.com.

Yours Truly Ray Brown Jazz concert with Seattle bassist Michael Glynn, joined by pianist Bert Dalton and percussionist Cal Haines, 7-9 p.m. Saturday, 3-5 p.m. Sunday, April 19-20, \$35, call 505-989-1088 for tickets and venue directions.

Citizen Cope Solo acoustic performance by the singer/songwriter, 7:30 p.m. Monday, April 21, the Lensic, \$30-\$50, 505-988-1234, ticketssantafe.org, a portion of the proceeds goes toward purchasing musical instruments for middle schoolers on the Northern Cheyenne Indian Reservation.

Leni Stern African Trio Jazz ensemble; featuring Senegalese musicians Mamadou Ba and Alioune Faye, 8 p.m. Sunday, May 11, Gig Performance Space, 1808-H Second St., \$20 at the door, gigsantafe.com.

Seventh Annual Crowdaddy Blues Fest Includes Mississippi Rail Company, Junior Brown, Desert Southwest Blues Band, and Felix y Los Gatos, Saturday and Sunday, May 17-18, Madrid, \$15 daily, kids under 12 no charge, crowdaddybluesfest.com.

Santa Fe Opera 2014 Festival Season The season opens with a new production of Bizet's *Carmen* and includes the American premiere of *Dr. Sun Yat-sen* by Huang Ruo, as well as Beethoven's *Fidelio* and Stravinsky's *Le Rossignol*, June 27-Aug. 23, schedule of community events available online, Santa Fe Opera, 301 Opera Dr., 505-986-5900, santafeopera.org.

Ninth Annual New Mexico Jazz Festival Held July 11-27 in Albuquerque and Santa Fe; performers include Terri Lyne Carrington's Mosaic Project, Jack DeJohnette Trio, Claudia Villela Quartet, and Henry Butler with Steven Bernstein & The Hot 9, tickets TBA, visit newmexicojazzfestival.org for schedule.

THEATER/DANCE

Louder Than Words Belisama Dance and Moving People Dance Theatre present a student repertory concert, 7 p.m. Friday and Saturday, April 11-12, James A. Little Theater, New Mexico School for the Deaf, 1060 Cerrillos Rd., \$20, ages 6-12 \$10, 505-988-1234, ticketssantafe.org.

Consider This Theater Grottesco presents a light-hearted showcase of theatrical styles through history, 7:30 p.m. Friday and Saturday, April 18-19, Santa Fe Playhouse, 142 E. De Vargas St., \$10, students \$5, 505-474-8400, theatergrottesco.org.

Left to Our Own Devices: Staying Connected in the Digital Age Just Say It Theater presents a collaborative performance by students of Santa Fe University of Art & Design and New Mexico School for the Arts, 7 p.m. Thursday-Saturday, 2 p.m. Sunday, April 24-27, Warehouse 21, 1614 Paseo de Peralta, \$10, 505-820-7112.

UPCOMING EVENTS

Joe West's Theater of Death One-act plays, includes musical guests Busy McCarroll, Anthony Leon, and Lori Ottino, 8 p.m. Fridays and Saturdays, April 25-26, May 2-3, and Thursday, May 1, Engine House Theater, 2846 NM 14, Madrid, \$15 in advance at Candyman Strings & Things, 851 St. Michael's Dr., 505-983-5906, and Mine Shaft Tavern, 2846 NM 14, Madrid, 505-473-0743.

BalletNext Classic and contemporary choreography by Mauro Bigonzetti and Brian Reeder, 7:30 p.m. Friday and Saturday, April 25-26, the Lensic, \$20-\$75 in advance at the Santa Fe Concert Association box office, 505-984-8759, or 505-988-1234, ticketssantafe.org.

Pajama Men The Albuquerque-based comedy duo in *Just the Two of Each of Us*, 7:30 p.m. Sunday April 27, the Lensic, \$15-\$35, 505-988-1234, ticketssantafe.org.

Tribes Fusion Theatre Company presents Nina Raine's drama, 8 p.m. Friday, 2 and 8 p.m. Saturday, May 2-3, the Lensic, \$20-\$40, 505-988-1234, ticketssantafe.org.

The Lilac Minyan A play by Debora Seidman, presented by Metta Theatre, 7:30 p.m. Friday and Saturday, 2 p.m. Sunday, May 2-4, Teatro Paraguas Studio, 3205 Calle Marie, \$18, discounts available, 505-424-1601, teatroparaguas.org.

Flexion Wise Fool New Mexico's touring stilt and aerial performance, 7:30 p.m. Friday and Saturday, May 16-17, Santa Fe Railyard Park, 740 Cerrillos Rd., donations accepted, wisefoolnewmexico.org.

HAPPENINGS

The Armory Show Multimedia group exhibit and public-program series in celebration of CCA's 35th anniversary; opening reception 6-8 p.m. Friday, April 11; gala 6 p.m. Saturday, April 12; Capital High School Film Festival, 11 a.m. Saturday, May 10, Center for Contemporary Arts, 1050 Old Pecos Trail, exhibit reception \$5, gala \$100, film festival no charge, 505-982-1338, ccasantafe.org.

River Voices Auctions and dinner in support of the Santa Fe Girls' School Project Preserve ecological-education program; live music with percussion and vocal ensemble Mala Maña; meal prepared by chef Bret Sparman of Luminaria, 5:30 p.m. Saturday, April 12, Inn and Spa at Loretto, 211 Old Santa Fe Trail, \$75, 505-820-3188.

Lannan Foundation Literary Series Author Benjamin Alire Sáenz in conversation with UT professor Cecilia Ballí, 7 p.m. Wednesday, April 16, the Lensic, \$6, discounts available, 505-988-1234, ticketssantafe.org.

Opera Unveiled Santa Fe Opera Guild presents author and lecturer Desirée Mays in a preview of the 2014 Santa Fe Opera season, 5:30 p.m. Wednesday, April 23, Unitarian Universalist Congregation of Santa Fe, 107 W. Barcelona Rd., \$10, 505-629-1410, guildsofsfo.org.

Fantase Dome Fest Outdoor multimedia interactive light installation presented by Creative Santa Fe, 6-11 p.m. Friday, May 9, De Vargas Park, W. Alameda and S. Guadalupe streets, no charge, 505-989-9934, creativesantafe.org.

Tenth Annual Native Treasures More than 200 Native artists selling handcrafted works; benefit preview party with a reception for the 2014 Living Treasures artists Joe Cajero and Althea Cajero, hors d'oeuvres, champagne, and live jazz ensemble, 7:30 p.m. Friday, May 23; early bird show 9 a.m. Saturday, May 24, art show and sale 10 a.m.-4 p.m. Saturday and Sunday, Santa Fe Community Gallery, Santa Fe Community Convention Center, 201 W. Marcy St., early bird admission \$20 at the door, Saturday show \$10 at the door, no charge on Sunday, preview party \$100 in advance online at nativetreasures.org (includes early bird ticket for Saturday admission).

New Mexico History Museum Fifth Anniversary Bash Highlighting toys from the permanent collection with *Toys and Games: A New Mexico Childhood*, games held in the Palace of the Governors Courtyard, 2-4 p.m. Sunday, May 25, New Mexico History Museum, 113 Lincoln Ave., by museum admission, 505-476-5200.



Taina Asili y la Banda Rebelde on stage April 13, at Santa Fe Sol Stage & Grill

AT THE GALLERIES

Chiaroscuro Contemporary Art

702½ Canyon Rd., 505-992-0711. *Spring Thaw*, group show.

Jean Cocteau Cinema Gallery

418 Montezuma Ave., 505-466-5528. *Mortal Mirrors*, drawings by Todd Ryan White, through April 11.

LewAllen Galleries 1613 Paseo de Peralta, 505-988-3250. Glass-artist Lucy Lyon's Sandy Hook Elementary School memorial, through April 20.

Monroe Gallery of Photography

112 Don Gaspar Ave., 505-992-0800. *When Cool Was King*, photojournalistic works, through April 20.

Santa Fe Clay 545 Camino de la Familia, 505-984-1122. Works by ceramic artists Lee Akins, Marc Digeros, and Lilly Zuckerman, through April 19.

Visual Arts Gallery — Santa Fe

Community College 6401 Richards Ave., 505-428-1501. *Gray, Matters: An Exhibition of Contemporary Native American Art + Design*, group show, through April 22.

Zane Bennett Contemporary Art

435 S. Guadalupe St., 505-982-8111. *Bits and Pieces*, works by Karina Hean, Catherine Gangloff, and Michel Déjean, through April 19.



Jean Cocteau Cinema Gallery, 418 Montezuma Ave., shows drawings by Todd Ryan White.

MUSEUMS & ART SPACES

SANTA FE

Georgia O'Keeffe Museum

217 Johnson St., 505-946-1000. *Georgia O'Keeffe and Ansel Adams: The Hawaii Pictures* ♦ *Abiquiú Views*, through Sept. 14. Paintings, drawings, sculptures, sketches, and photographs by O'Keeffe in the permanent collection. Open daily; visit okeeffemuseum.org.

Museum of Contemporary Native Arts

108 Cathedral Place, 505-983-1777. *Articulations in Print*, group show, through July ♦ *Bon à Tirer*, prints from the permanent collection, through July ♦ *Native American Short Films*, continuous loop of five films from Sundance Institute's Native American and Indigenous Program. Closed Tuesdays; visit iaia.edu/museum.

Museum of Indian Arts & Culture

710 Camino Lejo, Museum Hill, 505-476-1269. *Native American Portraits: Points of Inquiry*, vintage and contemporary photographs, through January 2015 ♦ *The Buchsbaum Gallery of Southwestern Pottery*, traditional and contemporary works ♦ *Here, Now, and Always*, more than 1,300 artifacts from the museum collection. Closed Mondays through Memorial Day; visit indianartsandculture.org.

Museum of International Folk Art

706 Camino Lejo, Museum Hill, 505-476-1200. *Wooden Menagerie: Made in New Mexico*, early 20th-century carvings, reception 1-4 p.m. Sunday, April 6, through Feb. 15, 2015 ♦ *Tako Kichi: Kite Crazy in Japan*, exhibition of Japanese kites, through April 27 ♦ *New World Cuisine: The Histories of Chocolate, Mate y Más* ♦ *Multiple Visions: A Common Bond*, international collection of toys and folk art ♦ *Brasil and Arte Popular*, pieces from the museum's collection, through Aug. 10. Closed Mondays; visit internationalfolkart.org.

Museum of Spanish Colonial Art

750 Camino Lejo, Museum Hill, 505-982-2226. *Filigree & Finery: The Art of Adornment in New Mexico*, through May ♦ *Window on Lima: Beltrán-Kropp Peruvian Art Collection*, through May 27 ♦ *San Ysidro/ St. Isidore the Farmer*, bultos, retablos, straw appliqué, and paintings on tin ♦ *Recent Acquisitions*, colonial and 19th-century Mexican art, sculpture, and furniture; also, work by young Spanish Market artists ♦ *The Delgado Room*, late-colonial-period re-creation. Visit spanishcolonialblog.org; closed Mondays.

New Mexico History Museum/Palace of the Governors

113 Lincoln Ave., 505-476-5200. *Transformed by New Mexico*, work by photographer Donald Woodman, through Oct. 12 ♦ *Water Over Mountain*, Channing Huser's photographic installation ♦ *Telling New Mexico: Stories From Then and Now*, core exhibit ♦ *Santa Fe Found: Fragments of Time*, the archaeological and historical roots of Santa Fe. Closed Mondays; visit nmhistorymuseum.org.

New Mexico Museum of Art

107 W. Palace Ave., 505-476-5072. *Focus on Photography*, rotating exhibits: *Beneath Our Feet*, photographs by Joan Myers ♦ *Grounded*, landscapes from the museum collection ♦ *Photo Lab*, interactive exhibit explaining the processes used to make color and platinum-palladium prints from the collection, through March 2015 ♦ *50 Works for 50 States: New Mexico*, through April 13. Closed Mondays; visit nmartmuseum.org.

Pablita Velarde Museum of Indian Women in the Arts

213 Cathedral Place, 505-988-8900. *Gathering of Dolls: A History of Native Dolls*, through April 27. Closed Mondays; visit pvmiwa.org.

Poeh Cultural Center and Museum

78 Cities of Gold Rd., 505-455-3334. *Nah Poeh Meng*, 1,600-square-foot installation highlighting the works of Pueblo artists and Pueblo history. Closed Saturdays and Sundays; visit poehcenter.org.

Santa Fe Children's Museum

1050 Old Pecos Trail, 505-989-8359. Houses current interactive exhibits. Visit santafechildrensmuseum.org; closed Mondays and Tuesdays through May.

SITE Santa Fe

1606 Paseo de Peralta, 505-989-1199. *Feast: Radical Hospitality in Contemporary Art*, through May 18. (See review, Page 38). Closed Mondays-Wednesdays; visit sitesantafe.org.

Wheelwright Museum of the American Indian

704 Camino Lejo, Museum Hill, 505-982-4636. *The Durango Collection: Native American Weaving in the Southwest*, 1860-1880, through April 13. Open daily; visit wheelwright.org.

ALBUQUERQUE

Albuquerque Museum of Art & History

2000 Mountain Rd. N.W., 505-243-7255. *Everybody's Neighbor: Vivian Vance*, family memorabilia and the museum's photo archives of the former Albuquerque resident, through January 2015 ♦ *Behind Closed Doors: Art in the Spanish American Home, 1492-1898*, works from the Brooklyn Museum, through May 18 ♦ *Arte en la Charrería: The Artisanry of Mexican Equestrian Culture*, more than 150 examples of craftsmanship and design distinctive to the charro ♦ *African American Art From the Permanent Collection*, installation of drawings, prints, photographs, and paintings by New Mexico African American artists, through May 4. Closed Mondays; visit cabq.gov/culturalservices/albuquerque-museum/general-museum-information.

Holocaust and Intolerance Museum of New Mexico

616 Central Ave. S.W., 505-247-0606. Exhibits on overcoming intolerance and prejudice. Closed Sundays and Mondays; visit nmholocaustmuseum.org.

Indian Pueblo Cultural Center

2401 12th St. N.W., 866-855-7902. *Our Land, Our Culture, Our Story*, a brief historical overview of the Pueblo world, and exhibits of contemporary artwork and craftsmanship of each of the 19 pueblos. Open daily; visit indianpueblo.org.

Maxwell Museum of Anthropology

UNM campus, 1 University Blvd. N.E., 505-277-4405. The museum's collection includes over 10 million individual archaeological, ethnological, archival, photo, and skeletal items. Closed Sundays and Mondays; visit unm.edu/maxwell.

National Hispanic Cultural Center

1701 Fourth St. S.W., 505-604-6896. *En la Cocina With San Pascual*, works by New Mexico artists. Hispanic visual arts, drama, traditional and contemporary music, dance, literary arts, film, and culinary arts. Closed Mondays; visit nationalhispaniccenter.org.

UNM Art Museum

1 University of New Mexico Blvd., 505-277-4001. *Melanie Yazzie: Geographies of Memory*, works by the printmaker and sculptor ♦ *400 Years of Remembering and Forgetting: The Graphic Art of Floyd Solomon*, etchings by the late artist (See story, Page 34) ♦ *The Blinding Light of History: Genia Chef, Ilya Kabakov, and Oleg Vassiliev*, Russian paintings and drawings ♦ *Breakthroughs: The Twentieth Annual Juried Graduate Exhibition*, all through May 17. Visit unmartmuseum.org; closed Sundays and Mondays.

ESPAÑOLA

Bond House Museum and Misión

Museum y Convento 706 Bond St., 505-747-8535. Historic and cultural treasures exhibited in the home of railroad entrepreneur Frank Bond (1863-1945). Call for hours; visit plazadeespanola.com.

LOS ALAMOS

Bradbury Science Museum

1350 Central Ave., 505-667-4444. Information on the history of Los Alamos and the Manhattan Project, as well as over 40 interactive exhibits. Open daily; visit lanl.gov/museum.

Los Alamos Historical Museum

1050 Bathtub Row, 505-662-4493. *Edith and Tilano: Bridges Between Two Worlds*, photographs and artifacts of the early homesteaders, through May. Core exhibits on area geology, early homesteaders, and the Manhattan Project. Housed in the Guest Cottage of the Los Alamos Ranch School. Open daily; visit losalamoshistory.org.

Pajarito Environmental Education Center

3540 Orange St., 505-662-0460. Exhibits of flora and fauna of the Pajarito Plateau; herbarium, live amphibians, and butterfly and xeric gardens. Closed Sundays; visit pajaritoec.org.

TAOS

E.L. Blumenschein Home and Museum

222 Ledoux St., 575-758-0505. Hacienda art from the Blumenschein family collection. European and Spanish colonial antiques. Open daily; visit taohistoricmuseums.org.

Harwood Museum of Art

238 Ledoux St., 575-758-9826. *Ken Price: Slow and Steady Wins the Race, Works on Paper 1962-2010*, drawings by the late artist ♦ *Charles Mattox: Poetry in Motion*, works on paper from the 1970s ♦ *Art for a Silent Planet: Blaustein, Elder and Long*, works by local artists Jonathan Blaustein, Nina Elder, and Debbie Long, exhibits up through May 4 ♦ *Highlights From the Harwood Museum of Art's Collection of Contemporary Art* ♦ *Death Shrine I*, work by Ken Price ♦ works of the Taos Society of Artists and Taos Pueblo Artists. Open daily through October; visit harwoodmuseum.org.

Kit Carson Home & Museum

113 Kit Carson Rd., 575-758-4945. Original home of Christopher Houston "Kit" and Josefa Carson displaying artifacts, antique firearms, pioneer belongings, and Carson memorabilia. Open daily; visit kitcarsonhomeandmuseum.com.

La Hacienda de los Martinez

708 Hacienda Way, 575-758-1000. One of the few Northern New Mexico-style, late-Spanish-colonial-period "great houses" remaining in the American Southwest. Built in 1804 by Severino Martin. Visit taohistoricmuseums.org; open daily.

Millicent Rogers Museum

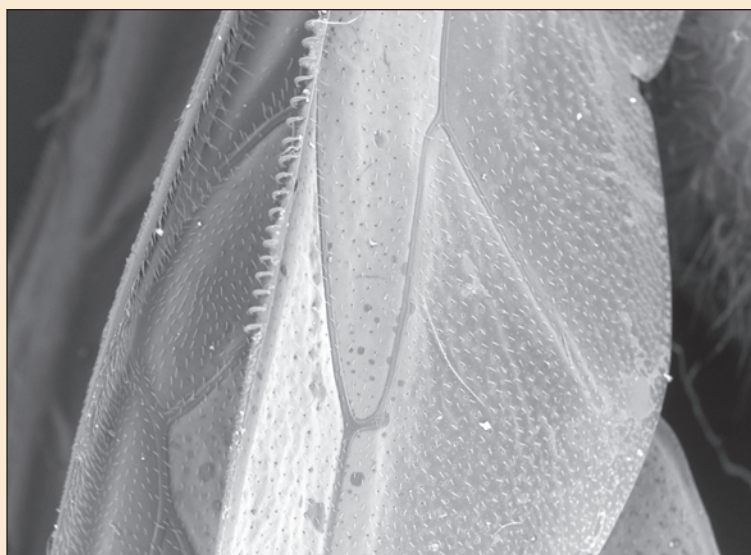
1504 Millicent Rogers Rd., 575-758-2462. Historical collections of Native American jewelry, ceramics, and paintings; Hispanic textiles, metalwork, and sculpture; and a wide range of contemporary jewelry. Open daily through October; visit millicentrogers.org

Taos Art Museum and Fechin House

227 Paseo del Pueblo Norte, 575-758-2690. Housed in the studio and home that artist Nicolai Fechin built for his family between 1927 and 1933. Closed Mondays; visit taosartmuseum.org.

EXHIBITIONISM

A peek at what's showing around town



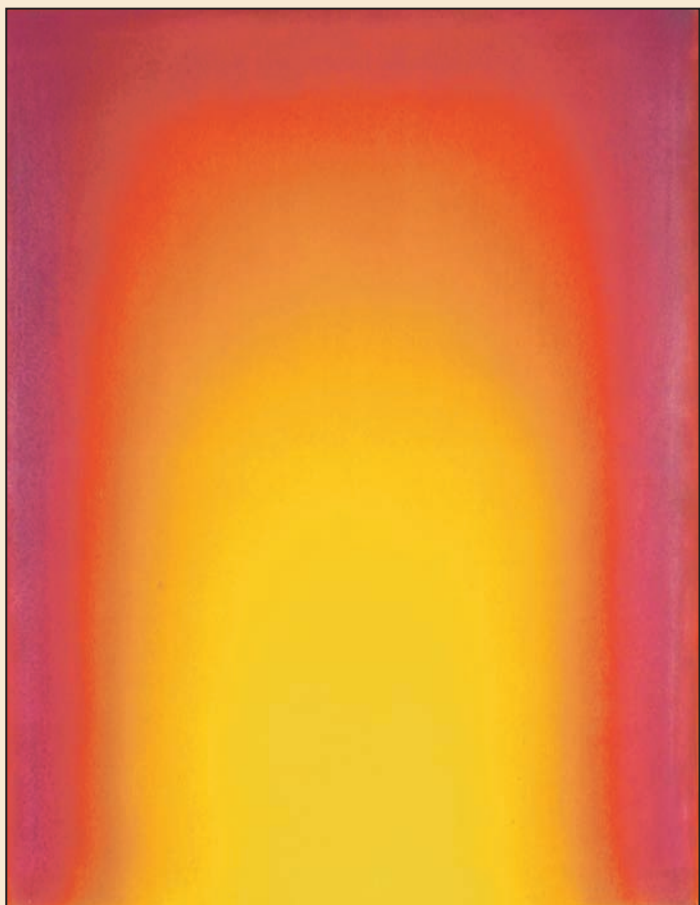
Scott Voorhies: *Bee's Wing Magnified 60 Times*, 2014, digital print. An exhibition of electron microscope images made by students of the MASTERS Program, a charter high school in Santa Fe, and students in the Santa Fe Community College photography department, is on view in the lobby of the Fine Arts Building at SFCC (6401 Richards Ave.; 505-428-1000) through April 11. The exhibition's theme is magnified bees and flowers. A scanning electron microscope is on hand for visitor use during the run of the show. The public reception is Wednesday, April 9, at 4 p.m.



Celeste Ryder: *Eunice*, 2012, oil on canvas. Celeste and Anthony Ryder opened a studio in Santa Fe to teach advanced drawing and painting based on the methods and ideas of Ted Seth Jacobs, a former teacher at New York's Art Students League and founder of L'École Albert Defois in France. An exhibition of works by students and faculty from Ryder Studio opens at Argos Studio/Gallery and Santa Fe Etching Club (1211 Luisa St.) with a 5 p.m. reception on Friday, April 4. Call 505-988-1814.



Sherry Ikeda: *Dot Painting*, 2014, encaustic. Eggman and Walrus Art Gallery (130 W. Palace Ave., second floor) presents *Wax-Ability: Pushing the Boundaries of Encaustic Art*. The show comprises works in encaustic, a wax medium applied hot and mixed with pigment, by Jayne Levant, Angel Wynn, Douglas Mehrens, Sherry Ikeda, and John Schaeffer. The show opens Friday, April 4, with a 5:30 p.m. reception. Each artist gives a demonstration/presentation of his or her techniques beginning on Saturday, April 5, at 1 p.m. and continuing every Saturday through the month. Call the gallery at 505-660-0048 or visit www.eggmanwalrus.com for a schedule of demonstrations.



Leon Berkowitz: *Unities 61*, 1973, oil on canvas. *Sensation*, an exhibition of paintings and sculptures from the 1970s to the present, opens at David Richard Gallery (544 S. Guadalupe St.) with a 5 p.m. reception on Friday, April 4. The show explores the influence of color on human emotions, sensations, and perceptions and includes works by Beverly Fishman, Tom Martinelli, Julian Stanczak, and others. Call 505-983-9555.



Felipe Benito Archuleta: *Sow With Piglets*, circa 1970, wood, paint, and fiber. The Museum of International Folk Art (706 Camino Lejo) presents *Wooden Menagerie: Made in New Mexico*, an exhibition of mixed-media woodcarvings of animals. The show includes historic works by Felipe Benito Archuleta (1910-1991), Patrociño Barela (1900-1964), and other 20th-century artists, as well as works by contemporary artists Luis Tapia, Gloria López, and others. A public reception is on Sunday, April 6, from 1 to 4 p.m.; entrance is by museum admission. Call 505-476-1200.