

pasa week

compiled by Pamela Beach,
pambeach@sfnewmexican.com
pasatiempomagazine.com

Friday, Feb. 21

GALLERY/MUSEUM OPENINGS

ARTFeast 2014

Exhibits, food, and music; through Sunday, Feb. 23; Edible Art Tour (EAT), members of the Santa Fe Gallery Association team with local restaurants; stroll from gallery to gallery or take shuttle buses between downtown and Canyon Rd., 5-8 p.m.; Fashion Feast, dance party and fashion show with *Project Runway* finalist Mondo Guerra, 8 p.m.-midnight, Scottish Rite Center, 463 Canyon Rd., \$40; Edible Art Tour and Fashion Feast tickets \$70; visit artfeast.org for scheduled events and tickets; proceeds benefit ArtSmart, a local nonprofit organization that supports youth art programs. (See story, Page 32)

Barbara Meikle Fine Art 236 Delgado St., 505-992-0400. Pairing with Maria's New Mexican Kitchen, reception 5-8 p.m.

Bill Hester Fine Art

621 Canyon Rd., 505-660-5966. *Teahouse Moments*, poetry collection by Hester, proceeds benefit ArtSmart, reception 5-7 p.m.

Design Warehouse 101 W. Marcy St., 505-988-1555. *The Best: Award Winners From AIA Santa Fe*, works by local architects, reception 5-7 p.m., through March 7.

Giacobbe-Fritz Fine Art 702 Canyon Rd., 505-986-1156. Circus-themed group show; reception with food provided by Rooftop Pizzeria, 5-8 p.m.

Heidi Loewen Porcelain Gallery

315 Johnson St., 505-988-2225. *Spring Is in the Air*, new work by Loewen, with refreshments from Swiss Bakery & Pastry Shop, 5-8 p.m.

Matthews Gallery

669 Canyon Rd., 505-992-2882. *Folio*, group show of works on paper, reception with food by Museum Hill Café 5-8 p.m.

Liquid Outpost Coffeehouse

Inn at Loretto, 211 Old Santa Fe Trail, 505-983-6503. *Photography as Fine Art*, Lee Manning's work, reception 4-6 p.m., through February.

Pippin Contemporary

200 Canyon Rd., 505-795-7476. Pairing with Jambo Café in the Edible Art Tour, 5-8 p.m.

Pop Gallery

142 Lincoln Ave., 505-820-0788. Work by jeweler/sculptor Jeff Brock, hosting C.G. Higgins Confections in the Edible Art Tour, reception 5-8 p.m.

Sage Creek Gallery

421 Canyon Rd., 505-988-3444. *Alight*, still-lives by Sarah Siltala, reception 5-8 p.m., through March 7.

Tansey Contemporary 652 Canyon Rd., 505-995-8513. Group show, reception catered by La Plazuela Restaurant, 5-8 p.m.



Paul Caponigro: *Apple*, Winthrop, MA, 1964, at Andrew Smith Gallery, 122 Grant Ave.

Tresa Vorenberg Goldsmiths

656 Canyon Rd., 505-988-7215. Fortieth anniversary celebration, reception with The Steaksmith, 5-8 p.m.

Ventana Fine Art

400 Canyon Rd., 505-983-8815. Pairing with Pink Adobe and Guadalupe Café, reception 5-8 p.m.

CLASSICAL MUSIC

TGIF piano recital

Charles Blanchard, music of Haydn and Beethoven, 5:30-6 p.m., First Presbyterian Church of Santa Fe, 208 Grant Ave., donations welcome, 505-982-8544, Ext. 16.

THEATER/DANCE

Benchwarmers 13

Festival of eight 15-minute playlets by local playwrights, 7:30 p.m., Santa Fe Playhouse, 142 E. De Vargas St., \$20, ages 17 and under \$15, 505-988-4262, santafeplayhouse.org, runs through March 2.

Parallel Lives

A play by Kathy Najimy and Mo Geffney presented by Teatro Serpiente, 7:30 p.m., Teatro Paraguas Studio, 3205 Calle Marie, \$16 and \$18, 505-424-1601, teatroparaguas.org, continues Saturday.

The Trojan Women

The Performing Arts Department at SFUA&D presents Euripides' tragedy, 7 p.m., Weckesser Studio Theatre, 1600 St. Michael's Dr., \$5, tickets available at the door one hour before showtime, 505-473-6439.

Winter Dance Escape

NDI New Mexico student showcase; featuring *Peter and the Wolf*, music by Prokofiev, encores through Sunday, 7 p.m., The Dance Barns, 1140 Alto St., \$11 and \$16, 505-983-7661.

Magic and Mystery

A performance by magician Misty Lee, 6:20 p.m., Jean Cocteau Cinema, 418 Montezuma Ave., \$20, discounts available, 505-466-5528, encores Saturday. (See story, Page 36)

BOOKS/TALKS

Jeffrey Lewis The author reads from and signs copies of *The Inquisitor's Diary*, 6 p.m., Collected Works Bookstore, 202 Galisteo St., 505-988-4226.

Spirited Friends: On Dogs and Friendship

Gary Borjesson explores what we can learn from dogs, 7:30 p.m., Great Hall, Peterson Student Center, St. John's College, 1160 Camino de Cruz Blanca, no charge, 505-660-1616.

OUTDOORS

Winter hiking sessions

The City of Santa Fe Recreation Division offers local trail hikes ranging from easy to moderate; Wednesdays and Fridays through February, 11 a.m.-1 p.m., \$20, preregister at Genoveva Chavez Community Center, 3221 Rodeo Rd. Contact Michelle Rogers, 505-955-4047, or visit chavezcenter.com.

EVENTS

Santa Fe Council on International Relations for WorldQuest 2014

College bowl-style game of international trivia, 5:45-9 p.m., Jemez Room, Santa Fe Community College, 6401 Richards Ave., \$40 includes Greek buffet, register online at sfcir.org or call 505-982-4931.

NIGHTLIFE

(See Page 49 for addresses)

Café Café

Trio Los Primos, traditional Latin tunes, 6-9 p.m., no cover.

Cowgirl BBQ

Classic-country singer/songwriter Bill Hearne, 5-7:30 p.m.; Broomdust Caravan, juke-joint honky-tonk and biker-bar rock, 8:30 p.m.-close; no cover.

Duel Brewing

Hot Honey, Singer/songwriters Lucy Barna, Paige Barton, and Lori Ottino, 7-10 p.m., no cover.

Hotel Santa Fe

Guitarist/flutist Ronald Roybal, 7-9 p.m., no cover.

Lodge Lounge at The Lodge at Santa Fe

Pachanga! Club Fridays with DJ Gabriel "Aztec Sol" Ortega spinning salsa, cumbia, bachata, and merenge; 8:30-9:30 p.m., call for cover.

Mine Shaft Tavern

C.W. Ayon's one-man blues band, 7 p.m., call for cover.

Palace Restaurant & Saloon

Disco duo Vanilla Pop, 10 p.m., call for cover.

Pranzo Italian Grill

Geist Cabaret with pianist David Geist, 6-9 p.m., call for cover.

Second Street Brewery

Gypsy-jazz ensemble Hot Club of Santa Fe, 6-9 p.m., no cover.

Second Street Brewery at the Railyard

Roots-rock duo Man No Sober, 7-10 p.m., no cover.

Tiny's

Acoustic guitarist Chris Abeyta, 5:30 p.m.; classic-rock band The Jakes, 8:30 p.m.-close; no cover.

Vanessie

Pianist/vocalist Bob Finnie, '50s-'70s pop, 6:30 p.m., call for cover.

Pasa's Little Black Book.....	49	In the Wings.....	53
Elsewhere.....	52	At the Galleries.....	54
People Who Need People.....	52	Museums & Art Spaces.....	54
Under 21.....	52	Exhibitionism.....	55
Pasa Kids.....	52		

calendar guidelines Please submit information and listings for *Pasa Week* no later than 5 p.m. Friday, two weeks prior to the desired publication date. Resubmit recurring listings every three weeks. Send submissions by mail to *Pasatiempo* Calendar, 202 E. Marcy St., Santa Fe, NM, 87501, by email to pasa@sfnewmexican.com, or by fax to 505-820-0803. *Pasatiempo* does not charge for listings, but inclusion in the calendar and the return of photos cannot be guaranteed. Questions or comments about this calendar? Call Pamela Beach, *Pasatiempo* calendar editor, at 505-986-3019; or send an email to pasa@sfnewmexican.com or pambeach@sfnewmexican.com. See our calendar at www.pasatiempomagazine.com, and follow *Pasatiempo* on Facebook and Twitter.

22 Saturday

GALLERY/MUSEUM OPENINGS

ARTfeast 2014 Art of Home Tours

View six residences staged to showcase art chosen from local galleries, noon-4 p.m. today and Sunday, maps and directions available at all Santa Fe Properties locations and ARTfeast events, or online at santafeproperties.com and artfeast.com; visit artfeast.org for scheduled events and tickets; proceeds benefit ArtSmart, a local nonprofit organization that supports youth art programs. (See story, Page 32)

Andrew Smith Gallery

122 Grant Ave., 505-984-1234. *Old and New*, Photography by Paul Caponigro, reception with food provided by Terra Cotta Restaurant, 5-8 p.m.

Santa Fe Classic Cars

1091 Siler Rd., Suite B-14, 505-690-2638. Automotive-themed photographs by Taylor Oliver, reception 3-5 p.m., through April 1.

IN CONCERT

Jaka CD-release party for the electro-marimba-trance band, 8 p.m., Railyard Performance Center, 1611-B Paseo de Peralta, no charge.

John McCutcheon

Folk singer/songwriter, 7 p.m., James A. Little Theater, 1060 Cerrillos Rd., \$10-\$35, 505-988-1234, ticketssantafe.org, or 505-454-4228, proceeds benefit Río Gallinas School.

Lonesome Leash

Songwriter Walt McClements' one-man band; local gothic-Americana band Cloacas opens, 8:30 p.m., High Mayhem Emerging Arts Studio, 2811 Siler Lane, \$10 suggested donation, highmayhem.org.

Music on the Hill Elevated

The annual jazz series continues with tenor saxophonist and composer Chase Baird, 7:30 p.m., Great Hall, Peterson Student Center, St. John's College, 1160 Camino de Cruz Blanca, \$25, 505-984-6118. (See story, Page 34)

THEATER/DANCE

Benchwarmers 13

Festival of eight 15-minute playlets by local playwrights, 7:30 p.m., Santa Fe Playhouse, 142 E. De Vargas St., \$20, ages 17 and under \$15, 505-988-4262, santafeplayhouse.org, runs through March 2.

Parallel Lives

A play by Kathy Najimy and Mo Geffney presented by Teatro Serpiente, 7:30 p.m., Teatro Paraguas Studio, 3205 Calle Marie, \$16 and \$18, teatroparaguas.org, 505-424-1601.

The Trojan Women

SFUA&D Performing Arts Department presents Euripides' tragedy, 7 p.m., Weckesser Studio Theatre, 1600 St. Michael's Dr., \$5, tickets available at the door one hour before showtime, 505-473-6439.

Winter Dance Escape

NDI New Mexico student showcase; featuring *Peter and the Wolf*, music by Prokofiev, encores Sunday, 7 p.m., The Dance Barns, 1140 Alto St., \$11 and \$16, 505-983-7661.

Magic and Mystery

Performance by magician Misty Lee, 2 and 9 p.m., Jean Cocteau Cinema, 418 Montezuma Ave., \$20, discounts available, 505-466-5528. (See story, Page 36)

Tao Phoenix Rising

Contemporary Japanese dance and taiko drum troupe, 7:30 p.m., the Lensic, \$25-\$45, discounts available, ticketssantafe.org, 505-988-1234.

Fifth Annual Santa Fe Restaurant Week

The fifth annual Santa Fe Restaurant Week offers more than tempting prix-fixe lunches and dinners for local foodies. As you eat your way through more than 50 participating restaurants, from **Sunday, Feb. 23 to Sunday, March 2**, check out the numerous in-house, chef-led demonstrations to learn the secrets of salsa, the magic of mole, and the truth about braising. Tickets for classes (\$14 and up) and a list of restaurants are available online at nmrestaurantweek.com.



The Jewel Box Cabaret

Gender-bending musical comedy and burlesque series, featuring Guava Chiffon, 8:30 p.m., María Benítez Cabaret at The Lodge, 750 N. St. Francis Dr., \$10, VIP seating \$20, 505-428-7781.

BOOKS/TALKS

Michele Zackheim The author reads from and signs copies of *Last Train to Paris*, 2 p.m., Collected Works Bookstore, 202 Galisteo St., 505-988-4226.

Santa Fe Writer's Workshop readings

Includes Elizabeth Tidrick, Kyle Dillon Hertz, and Christopher Johnson, 4:30 p.m., Op. Cit. Books, 500 Montezuma Ave., Suite 101 505-428-0321.

EVENTS

ARTfeast Gourmet dinner and auction

Eldorado Hotel, 309 W. San Francisco St., 505-988-4455. Held in honor of watercolorist Phyllis Kapp. (See story, Page 32)

Contra dance

Folk dance; live music by Megaband, beginners' class 7 p.m., dance 7:30 p.m., Odd Fellows Hall, 1125 Cerrillos Rd., \$9, students \$5, 505-820-3535.

Mixed-media photography and printmaking

David Hoptman and Ron Pokrasso lead the workshop, 2-4 p.m., Timberwick Studios, 24 Timberwick Rd., no charge, RSVP to dhstudio@mac.com.

Santa Fe Farmers Market

Local goods sold weekly on Saturday; this week's live music by multi-instrumentalist Gerry Carthy, 8 a.m.-1 p.m., Santa Fe Farmers Market Pavilion, 1607 Paseo de Peralta, no charge, santafefarmersmarket.com.

Trader Walt's Southwestern & International Marketplace

More than 100 vendor booths with antiques, folk and fine art, books, jewelry, and snacks, 8 a.m.-3 p.m., El Museo Cultural de Santa Fe, 555 Camino de la Familia, no charge.



PASA'S LITTLE BLACK BOOK

317 Aztec

317 Aztec St., 505-820-0150

Agoyo Lounge at the Inn on the Alameda

303 E. Alameda St., 505-984-2121

Anasazi Restaurant & Bar

Rosewood Inn of the Anasazi, 113 Washington Ave., 505-988-3030

Betterday Coffee

905 W. Alameda St., 505-555-1234

Bishop's Lodge Ranch Resort & Spa

1297 Bishops Lodge Rd., 505-983-6377

Café Café

500 Sandoval St., 505-466-1391

Casa Chimayó

409 W. Water St., 505-428-0391

¡Chispa! at El Mesón

213 Washington Ave., 505-983-6756

Cowgirl BBQ

319 S. Guadalupe St., 505-982-2565

The Den at Coyote Café

132 W. Water St., 505-983-1615

Duel Brewing

1228 Parkway Dr., 505-474-5301

El Cañon at the Hilton

100 Sandoval St., 505-988-2811

Eldorado Hotel & Spa

309 W. San Francisco St., 505-988-4455

El Farol

808 Canyon Rd., 505-983-9912

El Paseo Bar & Grill

208 Galisteo St., 505-992-2848

Evangelo's

200 W. San Francisco St., 505-982-9014

High Mayhem Emerging Arts

2811 Siler Lane, 505-438-2047

Hotel Santa Fe

1501 Paseo de Peralta, 505-982-1200

Iconik Coffee Roasters

1600 Lena St., 505-428-0996

La Boca

72 W. Marcy St., 505-982-3433

La Casa Sena Cantina

125 E. Palace Ave., 505-988-9232

La Fiesta Lounge at La Fonda

100 E. San Francisco St., 505-982-5511

La Posada de Santa Fe Resort and Spa

330 E. Palace Ave., 505-986-0000

Lensic Performing Arts Center

211 W. San Francisco St., 505-988-1234

Lodge Lounge at The Lodge

at Santa Fe 750 N. St. Francis Dr., 505-992-5800

Low 'n' Slow Lowrider Bar

at Hotel Chimayó de Santa Fe 125 Washington Ave., 505-988-4900

The Matador

116 W. San Francisco St.

Mine Shaft Tavern

2846 N.M. 14, Madrid, 505-473-0743

Molly's Kitchen & Lounge

1611 Calle Lorca, 505-983-7577

Museum Hill Café

710 Camino Lejo, Milner Plaza, 505-984-8900

Music Room at Garrett's

Desert Inn 311 Old Santa Fe Trail, 505-982-1851

Palace Restaurant & Saloon

142 W. Palace Ave., 505-428-0690

The Pantry Restaurant

1820 Cerrillos Rd., 505-986-0022

Pranzo Italian Grill

540 Montezuma Ave., 505-984-2645

Santa Fe Community Convention Center

201 W. Marcy St., 505-955-6705

Santa Fe Sol Stage & Grill

37 Fire Place, solofsantafe.com

Second Street Brewery

1814 Second St., 505-982-3030

Second Street Brewery at the Railyard

1607 Paseo de Peralta, 505-989-3278

Sweetwater Harvest Kitchen

1512-B Pacheco St., 505-795-7383

Taberna La Boca

125 Lincoln Ave., 505-988-7102

Tiny's

1005 St. Francis Drive, Suite 117, 505-983-9817

The Underground at Evangelo's

200 W. San Francisco St.

Upper Crust Pizza

329 Old Santa Fe Trail, 505-982-0000

Vanessie

434 W. San Francisco St., 505-982-9966

Warehouse 21

1614 Paseo de Peralta, 505-989-4423

Zia Dinner

326 S. Guadalupe St., 505-988-7008

NIGHTLIFE

(See Page 49 for addresses)

Anasazi Restaurant & Bar

Guitarist Jesus Bas, 7-10 p.m., no cover.

¡Chispa! at El Mesón

Ryan Finn Jazz Quartet, Caribbean-infused beats, 7:30-10:30 p.m., no cover.

Café Café

Contemporary-Latin guitarist Ramón Bermudez, 6 p.m., no cover.

Cowgirl BBQ

Roots-rock duo Man No Sober, 2-5 p.m.; Sean Healen Band, folk-rock, 8:30 p.m.-close; no cover.

Duel Brewing

Folk-rock singer/songwriter Lisa Carmen, 7-10 p.m., no cover.

Hotel Santa Fe

Guitarist/flutist Ronald Roybal, 7-9 p.m., no cover.

La Casa Sena Cantina

Best of Broadway, piano and vocals, 6-10 p.m., no cover.

La Posada de Santa Fe Resort and Spa

Pat Malone Jazz Trio, featuring vocalist Whitney Carroll Malone, 6-9 p.m., call for cover.

Mine Shaft Tavern

Bluegrass duo Paw & Eric, 3 p.m.; Connie Long & Fast Patsy, Janis Joplin meets Patsy Cline, 7 p.m.; call for cover.

Palace Restaurant & Saloon

Rock cover band Chango, 10 p.m., call for cover.

Pranzo Italian Grill

Geist Cabaret with pianist David Geist, 6-9 p.m., call for cover.

Second Street Brewery

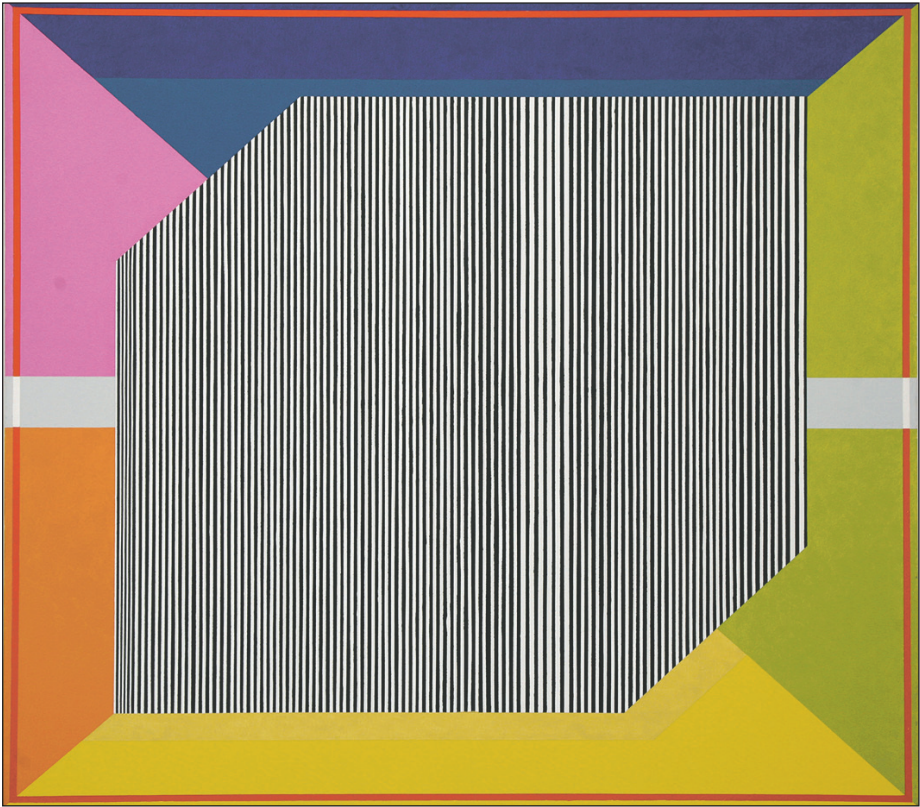
Country Blues Revue, 6-9 p.m., no cover.

Second Street Brewery at the Railyard

Kodama Jazz Trio, 7-10 p.m., no cover.

Sweetwater Harvest Kitchen

Hawaiian slack-key guitarist John Serkin, 6 p.m., no cover.



David Richard Gallery, 544 S. Guadalupe St., shows work by Oli Sihvonen.

Tiny's

Showcase karaoke with Nanci and Cyndi, 8:30 p.m., no cover.

Upper Crust Pizza

Singer/songwriter Eryn Bent, 6-9 p.m., no cover.

Vanessie

Pianist/vocalist Bob Finnie, '50s-'70s pop, 6:30 p.m., call for cover.

St. John's College piano recital

Willis "Chip" Miller; music of Bach, Rachmaninov, and Chopin, 3 p.m., Great Hall, Peterson Student Center, 1160 Camino de Cruz Blanca, no charge, 505-984-6000.

IN CONCERT

Melanie Monsour

Piano recital with bassist Paul Brown; jazz, Middle Eastern, and Latin music, noon-2 p.m., Museum Hill Café, 710 Camino Lejo, no charge, melaniemonsour.com.

Peter Mulvey

Singer/songwriter/guitarist, 7:30 p.m., Gig Performance Space, 1808-H Second St., \$20 in advance at brownpapertickets.com, \$23 at the door.

THEATER/DANCE

Benchwarmers 13 Festival of eight 15-minute playlets by local playwrights, 4 p.m., Santa Fe Playhouse, 142 E. De Vargas St., \$20, ages 17 and under \$15, santafeplayhouse.org, 505-988-4262, runs through March 2.

The Trojan Women

SFUAG&D Performing Arts Department presents Euripides' tragedy, 2 p.m., Weckesser Studio Theatre, 1600 St. Michael's Dr., \$5, tickets available at the door one hour before showtime, 505-473-6439.

Winter Dance Escape NDI New Mexico student showcase; featuring *Peter and the Wolf*, music by Prokofiev, 2 p.m., The Dance Barns, 1140 Alto St., \$11 and \$16, 505-983-7661.

BOOKS/TALKS

Journey Santa Fe Katya Franzgen, New Mexico Adaptive Ski Program director, in conversation with KSFR Radio host Xubi Wilson, 11 a.m., Collected Works Bookstore, 202 Galisteo St., 505-988-4226.

Muse Times Two Poetry Series

Readings by poets Craig Morgan Teicher and James Thomas Stevens, 4 p.m., Collected Works Bookstore, 202 Galisteo St., 505-988-4226. (See *Subtexts*, Page 16)

OUTDOORS

Geology Hike

Decode the ancient past with geologist Scott Renbarger, 1 p.m., Cerrillos Hills State Park, 16 miles south of Santa Fe off NM 14, \$5 per vehicle, 505-474-0196.

EVENTS

Calling in the Ancestors

Art-making and writing event with author Judith Fein, 2-5 p.m., Temple Beth Shalom, 205 E. Barcelona Rd., \$15 includes potluck meal, nmjhs.org, 505-982-1376. (See story, Page 18)

Railyard Artisan Market

Live music, entertainment, and local artists, 10 a.m.-4 p.m., Santa Fe Farmers Market Pavilion, 1607 Paseo de Peralta, no charge, artmarketsantafe.com.

Santa Fe Restaurant Week

Offering prix-fixe lunches and dinners, and seminars, at local restaurants, daily through March 2. Visit newmexicorestaurantweek.com for event details.

Trader Walt's Southwestern & International Marketplace

More than 100 vendor booths with antiques, folk and fine art, books, jewelry, and snacks, 9 a.m.-4 p.m., El Museo Cultural de Santa Fe, 555 Camino de la Familia, no charge.

NIGHTLIFE

(See Page 49 for addresses)

Cowgirl BBQ

Cowgirl Brunch with Country Blues Revue, noon-3 p.m.; bluesman Sean Farley, 8 p.m.; no cover.

La Posada de Santa Fe Resort and Spa

Wily Jim, Western swingabilly, 7-10 p.m., no cover.

Vanessie Pianist/vocalist Bob Finnie, '50s-'70s pop, 6:30 p.m., call for cover.

24 Monday

IN CONCERT

Santa Fe Public Schools Choruses

Performances begin at 6:30 p.m., doors open at 6 p.m., Lencic Performing Arts Center, 211 W. San Francisco St., no charge.

THEATER/DANCE

Julesworks Magical Mystery

Tour Follies Magic-themed sketches, skits, and music make up this month's variety-show series, 7 p.m., Jean Cocteau Cinema, 418 Montezuma Ave., \$7, jeancocteaucinema.com.

BOOKS/TALKS

Evidence for an Ancient Grand Canyon: 70 Million Years Old

The Southwest Seminars lecture series continues with University of Colorado assistant professor Rebecca Flowers, 6 p.m., Hotel Santa Fe, 1501 Paseo de Peralta, \$12 at the door, 505-466-2775.

Rain Clouds and Pachamama: Rethinking Colonial Art From Peru to New Mexico

A talk about new directions in the research of colonial art, with museum curator Robin Farwell Gavin, discusses, 2-3 p.m., Museum of Spanish Colonial Art, 750 Camino Lejo, Museum Hill, \$10, 505-982-2226.

EVENTS

Santa Fe Restaurant Week

Offering prix-fixe lunches and dinners, and seminars, at local restaurants, daily through March 2. Visit newmexicorestaurantweek.com for event details.

Talking Heads



Bernardo Miera y Pacheco: New Mexico's First Renaissance Man

UNM professor emeritus **John Kessel** discusses the artist's works at **6 p.m. Wednesday, Feb. 26**, at St. Francis Auditorium, New Mexico Museum of Art, 107 W. Palace Ave. This free event is part of the museum and El Rancho de las Golondrinas' Winter Lecture Series 2014. Call **505-476-5068** or **505-471-2261**. Shown, detail of Miera y Pacheco's *Santa Barbara*.

NIGHTLIFE

(See Page 49 for addresses)

Cowgirl BBQ

Cowgirl karaoke hosted by Michele Leidig, 8 p.m., no cover.

La Casa Sena Cantina

Best of Broadway, piano and vocals, 6-10 p.m., no cover.

Vanessie

Pianist/vocalist Bob Finnie, '50s-'70s pop, 6:30 p.m., call for cover.

25 Tuesday

EVENTS

Georgia O’Keeffe Museum workshop

Installation: The Art of Placement, learn how to enhance your environment, 6-8 p.m., Georgia O’Keeffe Museum Education Annex, 123 Grant Ave., \$8, 505-946-1000.

International folk dances

Weekly on Tuesdays, dance 8 p.m., lessons 7 p.m., Odd Fellows Hall, 1125 Cerrillos Rd., \$5 donation at the door, 505-501-5081 or 505-466-2920.

Santa Fe Jewish Film Festival

Being Jewish in France 2007 documentary presented in two parts; preceded by complimentary coffee, 7 p.m., Center for Contemporary Arts, 1050 Old Pecos Trail, \$10-\$17 in advance online at santafejff.org.

Santa Fe Restaurant Week

Offering prix-fixe lunches and dinners, and seminars, at local restaurants, daily through March 2. Visit newmexicorestaurantweek.com for event details.

NIGHTLIFE

(See Page 49 for addresses)

¡Chispa! at El Mesón

Argentine Tango Milonga, 7:30 p.m., no cover.

Cowgirl BBQ

Guitarist/singer Jobuk Johnson, 8 p.m., no cover.

La Casa Sena Cantina

Best of Broadway, piano and vocals, 6-10 p.m., no cover.

Second Street Brewery at the Railyard

Open-songs night hosted by Ben Wright, 7-10 p.m., no cover.

The Pantry Restaurant

Gary Vigil, acoustic guitar and vocals, 5:30-8 p.m., no cover.

Vanessie

Guitarist Marc Yaxley, Latin and classical music, 7 p.m., call for cover.

Zia Diner

Santa Fe bluegrass jam, 6-8 p.m., no cover.

26 Wednesday

BOOKS/TALKS

Dharma talk

Friends Along the Path, with Shinzan Palma, 5:30 p.m., Upaya Zen Center, 1404 Cerro Gordo Rd., donations accepted, 505-986-8518.

Lannan Foundation literary event

Greg Grandin, author and New York University professor, in conversation with Canadian journalist Avi Lewis, 7 p.m., the Lensic, 211 W. San Francisco St., \$6, discounts available, 505-988-1234, ticketssantafe.org. (See story, Page 20)



The main branch of the Santa Fe Public Library, 145 Washington Ave., shows work by JoAnn Garges.

New Mexico Arts Commission open meeting

Quarterly meeting: 9:30 a.m., John Gaw Meem Conference Room, 706 Camino Lejo, Museum Hill, no charge, call 505-827-6490 for copies of agenda.

School for Advanced Research colloquium

Unraveling Genetic Responses to Life at High Altitudes, a discussion on effects of high-altitude hypoxia, with University of Michigan professor Abigail Winslow Bigham, noon-1 p.m., 660 Garcia St., no charge, 505-954-7203, sarweb.org.

The Truth About Gun Violence and Mental Illness

A presentation by Duke University School of Medicine professor Jeffrey Swanson, 6 p.m., Center for Contemporary Art, 1050 Old Pecos Trail, no charge, visit ideasinpsychiatry.unm.edu or call 505-272-3592 to register.

Winter Lecture Series 2014

Bernardo Miera y Pacheco: New Mexico’s First Renaissance Man, by UNM professor emeritus John Kessell, 6 p.m., St. Francis Auditorium, New Mexico Museum of Art, 107 W. Palace Ave., no charge, call NMMA, 505-476-5068 or El Rancho de las Golondrinas, 505-471-2261 for information.

OUTDOORS

Winter hiking sessions

The City of Santa Fe Recreation Division offers local trail hikes ranging from easy to moderate; Wednesdays and Fridays through February, 11 a.m.-1 p.m., \$20, preregister at Genoveva Chavez Community Center, 3221 Rodeo Rd. Contact Michelle Rogers, 505-955-4047, chavezcenter.com.

EVENTS

Georgia O’Keeffe Museum curator talk

Learn about the current exhibits *Abiquiú Views* and *Georgia O’Keeffe and Ansel Adams: The Hawaii Pictures*, 12:30 p.m., Georgia O’Keeffe Museum Education Annex, 123 Grant Ave., by museum admission, 505-986-1000.

Santa Fe Restaurant Week

Offering prix-fixe lunches and dinners, and seminars, at local restaurants, daily through March 2. Visit newmexicorestaurantweek.com for event details.

NIGHTLIFE

(See Page 49 for addresses)

¡Chispa! at El Mesón

Flamenco guitarist Chuscales, 7-9 p.m., no cover.

Cowgirl BBQ

Kenny Skywolf Band, Memphis blues, soul, and reggae, 8 p.m., no cover.

La Casa Sena Cantina

Best of Broadway, piano and vocals, 6-10 p.m., no cover.

La Fiesta Lounge at La Fonda

Bill Hearne Trio, classic country tunes, 7:30 p.m., no cover.

La Posada de Santa Fe Resort and Spa

Wily Jim, Western swingabilly, 7-10 p.m., no cover.

The Pantry Restaurant

Gary Vigil, guitar and vocals, 5:30-8 p.m., no cover.

Tiny’s

505 Electric-Blues Jam, with Nick Wimett and M.C. Clymer, 8 p.m., no cover.

27 Thursday

THEATER/DANCE

Benchwarmers 13

Festival of eight 15-minute playlets by local playwrights, 7:30 p.m., Santa Fe Playhouse, 142 E. De Vargas St., \$20, ages 17 and under \$15, 505-988-4262, santafeplayhouse.org, runs through March 2.

National Theatre Live in HD

The broadcast series continues with *War Horse*, based on Michael Morpurgo’s novel set in France during WWI, 7 p.m., the Lensic, 211 W. San Francisco St., \$22, student discounts available, 505-988-1234, ticketssantafe.org.

BOOKS/TALKS

Renesan Institute for Lifelong Learning lecture

The series continues with *The Mythic Brontë Family*, by Randy Perazzini, 1-3 p.m., St. John’s United Methodist Church, 1200 Old Pecos Trail, \$10, 505-982-9274, renesan.org.

EVENTS

Santa Fe Restaurant Week

Offering prix-fixe lunches and dinners, and seminars, at local restaurants, daily through March 2. Visit newmexicorestaurantweek.com for event details.

NIGHTLIFE

(See Page 49 for addresses)

¡Chispa! at El Mesón

Jazz pianist Bert Dalton and bassist Milo Jaramillo, 7-9 p.m., no cover.

Cowgirl BBQ

Boomroots Collective, prog. reggae and hip-hop, 8 p.m., no cover.

Duel Brewing

Funk-rockers Pray for Brain, 7-10 p.m., no cover.

La Fiesta Lounge at La Fonda Bill Hearne Trio, classic country tunes, 7:30 p.m., no cover.

La Posada de Santa Fe Resort and Spa

Pat Malone Trio, featuring Kanoa Kaluhiwa on saxophone, Asher Barreras on bass, and Malone on guitar, 6-9 p.m., call for cover.

Low ’n’ Slow Lowrider Bar at Hotel Chimayó

Tenor guitarist and flutist Gerry Carthy, 9 p.m., no cover.

Palace Restaurant & Saloon

Thursday limelight karaoke, 10 p.m., no cover.

Santa Fe Capitol Grill

Guitarists Chusco and Ramón Bermudez, and percussionist Mark Clark, 4-6 p.m., no cover.





The National Theatre Live broadcast series continues with *War Horse*, Thursday, Feb. 27, at the Lensic.

The Matador

DJ Inky Inc. spinning soul/punk/ska, 8:30 p.m., no cover.

Tiny's

Mike Montiel Trio, Southern rock, 8 p.m.-close, no cover.

Vanessie

Pianist/vocalist Bob Finnie, '50s-'70s pop, 6:30 p.m., call for cover.

► Elsewhere

ALBUQUERQUE

516 Arts

516 Central Ave. S.W., 505-242-1445. *Heart of the City*, group show, through May 3.

John McCutcheon

Folk singer/songwriter, 8 p.m. Friday, Feb. 21, Outpost Performance Space, 210 Yale Blvd. S.E., \$28 in advance at ampcconcerts.org and holdmyticket.com, \$33 day of show.

LOS ALAMOS

Artist talk

Doug Waterfield discusses his exhibit *Doomtown: Art From the Nevada Testsite*, 4 p.m. Friday, Feb. 21, Los Alamos Historical Museum, 1050 Bathtub Row, no charge, 505-695-5252, losalamoshistory.org.

Mesa Public Library Gallery

2400 Central Ave., 505-662-8240. *Los Alamos Photography Club Show 2014*, reception 5:30-7:30 p.m. Monday, March 3, through March.

MADRID

Johnsons of Madrid

2843 NM 14, 505-471-1054. *Preserve La Bajada Mesa*, group show in response to proposed mining operation; group show of works by Northern New Mexico artists; *Wearables and Wallables*, group textile show featuring Beth Wheeler; *People*, works by Mel Johnson and Cosmo Monkhouse; through Tuesday, Feb. 25.

TAOS

David Anthony Fine Art

132 Kit Carson Rd., 575-758-7113. *Exothermic Reactions*, pyrotechnic tableaux by photographer David Mapes, through February.

Harwood Museum of Art

238 Ledoux St., 505-758-9826. *Ken Price: Slow and Steady Wins the Race, Works on Paper 1962-2010*, retrospective exhibit of drawings by the late artist (See story, Page 28) ♦ *Charles Mattox: Poetry in Motion*, works on paper from the 1970s ♦ *Art for a Silent Planet: Blaustein, Elder and Long*, works by local artists Jonathan Blaustein, Nina Elder, and Debbie Long, exhibits up through May 4.

► People who need people

Actors/Musicians

Santa Fe Performing Arts audition

Looking for a man and a woman for David Ives' play *Venus in Fur*. Call 505-982-7992 or email abato@sfperformingarts.org to make an appointment.

Southwest Regional Folk Alliance

Conference All music-industry professionals are encouraged to register by Saturday, March 1, for a free networking event held from 9:30 a.m. to 9 p.m. Friday, March 28, at Hotel Santa Fe. Visit swfolkalliance.org/swrfa-nm/ for details.

Artists

Call for artists and fashion designers

Santa Fe Arts Commission Community Gallery seeks apocalypse-themed works for its November exhibit *End of Days*; submit portfolios (5-10 images, artist statement, and/or bio) no later than March 14 to Rod Lambert, Community Gallery, P.O. Box 909, Santa Fe, NM, 87504-0909; 505-955-6705; santafeartscommission.org.

Call for sculpture One-inch-high sculptures sought for *The Royal Breadshow*; sculptures will be exhibited and then baked into breads; March 31 deadline; see theroyalbreadshow.com or axleart.com for submission guidelines.

Center for Contemporary Arts

Accepting work for the exhibit *The Big Picture*, opening mid-March; email up to five images, with dimensions, and a curriculum vitae to richard@ccasantfe.org.

MasterWorks of New Mexico 2014

Open to all New Mexico artists; accepting miniatures, pastels, watercolors, and oils/acrylics; miniatures must be shipped by March 15 or hand-delivered by March 22; for prospectus and information visit masterworksnm.org.

Photographers

Center Choice Awards and Project Development grant

The local nonprofit organization offers photographers awards and participation in its Review Santa Fe networking event; guidelines and application form available online at visitcenter.org; March 21 deadline.

Volunteers

American Cancer Society Training offered in support of the Cancer Resource Center at Christus St. Vincent Cancer Center; various shifts available during business hours Mondays-Fridays; call Geraldine Esquivel for details, 505-463-0308.

CCA call for volunteers

Available positions include Center for Contemporary Arts gallery greeters, shop sales, and gallery managers; 11:30 a.m.-5 p.m. beginning Friday, Feb. 21, through March 30; benefits: film passes and shop discounts; contact Naomi Gibbons, naomi@ccasantafe.org.

Cerrillos Hills State Park volunteer

training Seeking weekend receptionists, park greeters, and help serving refreshments during public programs; training held 10 a.m.-1 p.m. Saturday, March 8; call for reservations, 505-474-0196.

Food for Santa Fe

The nonprofit needs help packing and distributing groceries between the hours of 6 and 8 a.m. Wednesdays and Thursdays, 505-471-1187 or 505-603-6600.

The Hospice Center

Help weekly or bi-weekly, entering data for the volunteer program; basic computer skills required; call Mary Ann at 505-988-2211.

Los Alamos Historical Museum

tour-guide training Free session 11 a.m. Wednesday, Feb. 26; Nambé Room, Fuller Lodge, 2132 Central Ave., Los Alamos, 505-662-6272, losalamoshistory.org.

Many Mothers Assist new mothers and families, raise funds, plan events, become a board member, and more; requirements and details available online at manymothers.org; call 505-466-3715 for more information or to schedule an interview.

New Mexico History Museum Historical Downtown Walking Tours

Those interested in acting as tour guides are encouraged to attend an event at 9:30 a.m. Tuesday, March 4, for an illustrated presentation on the city's downtown core with archaeologist Cordelia Thomas Snow. Tour-guide training sessions run 3-5 p.m. Thursdays, March 13 and 20, and 10 a.m.-noon and 1-5 p.m. Saturday, March 29. Contacts: Peter Sinclair, 505-983-7744, and Linda Clarke, 505-989-1405.

St. Elizabeth Shelter

Help with meal preparation at residential facilities and emergency shelters; other duties also available; contact Rosario, 505-982-6611, Ext. 108, volunteer@steshelter.org.

Santa Fe Humane Society and Animal Shelter

Dogs need individuals to take them on daily walks; all shifts available, call Katherine at 505-983-4309, Ext. 128.

Santa Fe Society of Artists spring jury

New Mexico artisans are invited to apply for weekly Saturday outdoor art shows located downtown; jury held Saturday, Feb. 22; visit santafesocietyofartists.com for application forms; 505-455-3496.

Santa Fe Stories Project

The Santa Fe V.I.P. seeks material on the post-World War II era in Santa Fe; to submit stories or images, visit santafestories.com; submissions accepted through March.

► Under 21

Sees the Day Sound Healing concert

Featuring singer Consuelo Luz, 7 p.m. Friday, Feb. 21, Warehouse 21, 1614 Paseo de Peralta, call 505-989-4423 for details.

► Pasa Kids

Georgia O'Keeffe Museum Family Program

Shell-art projects: drawings, necklaces, and covered boxes; for children ages 3-5 accompanied by an adult, 9:30-11:30 a.m. Saturday, Feb. 22, 217 Johnson St., no charge, okeeffemuseum.org/events, 505-946-1000.

Bee Hive Kids Books events

Story Times; 11 a.m. Saturday, Feb. 22, ages 2 and up; 10:30 a.m. Wednesday, Feb. 26, ages 3-5, Bee Hive Kids Books, 328 Montezuma Ave., no charge, 505-780-8051.

Santa Fe Children's Museum 29th birthday party

Live music with Joe West, cupcake decorating, and other activities, 1-4 p.m. Sunday, Feb. 23, 1050 Old Pecos Trail, \$5, 505-989-8359.

Santa Fe Science Café for Young Thinkers

The talk series geared toward ages 13-19 continues with *Discovering the Atomic Structure of the World Around Us*, by LANL scientist Katharine Page, 6-7:30 p.m. Wednesday, Feb. 26, refreshments served, Georgia O'Keeffe Museum Education Annex, 123 Grant Ave., no charge, 505-603-7468. ◀

In the wings



MUSIC

Legends of the Celtic Harp

Acoustic trio, with Patrick Ball, Lisa Lynne, and Aryeh Frankfurter, 7:30 p.m. Friday, Feb. 28, Gig Performance Space, 1808-H Second St., \$20 at the door, gigsantafe.org.

Jonathan Wilson

Contemporary-folk music, 7:30 p.m. Friday, Feb. 28, Santa Fe Sol Stage & Grill, 37 Fire Place, \$12 in advance, 505-988-1234, ticketssantafe.org, \$15 at the door.

Santa Fe Music Collective

The jazz series continues with Albert “Tootie” Heath on drums, Bert Dalton on piano, and Andy Zadrozny on bass, 7 p.m. Friday, Feb. 28, Museum Hill Café, 710 Camino Lejo, \$25, 505-983-6820, santafemusiccollective.org.

Santa Fe Pro Musica Orchestra

Featuring mezzo-soprano Deborah Domanski, music of Debussy, Mahler, and Shostakovich, 6 p.m. Saturday, 3 p.m. Sunday, March 1-2, St. Francis Auditorium, New Mexico Museum of Art, 107 W. Palace Ave., \$15-\$65, discounts available, 505-988-1234, ticketssantafe.org.

Lenny Tischler The local composer/musician debuts his jazz suite *Freedom Work: Folk Forms and Variations* in commemoration of Black History Month, 7 p.m. Saturday, March 1, First Presbyterian Church of Santa Fe, 208 Grant Ave., \$20 through Monday, Feb. 24, \$25 in advance and at the door afterward, 505-652-2403, naacpsfm.blogspot.com.

The Met Live at the Lensic *Prince Igor*, Dmitri Tcherniakov’s production of Borodin’s Russian epic, 10 a.m. Saturday, 2 p.m. Sunday, March 1-2, the Lensic, 211 W. San Francisco St., \$22-\$28, 505-988-1234, ticketssantafe.org.

Música Antigua de Albuquerque

Hassler & the German Renaissance, a celebration of the composer’s 450th anniversary, 4:30 p.m. Sunday, March 2, Christ Lutheran Church, 1701 Arroyo Chamiso, \$16, discounts available, 505-842-9613.

David Russell Classical guitarist, 7:30 p.m. Friday, March 7, Great Hall, Peterson Student Center, St. John’s College, 1160 Camino de Cruz Blanca, \$40 at the door, 505-984-6000.

Serenata of Santa Fe

Here & Now, works by Kelvin McNeal and Ron Strauss, 7 p.m. Friday, March 7; performers include oboist Pamela Epple, cellist Sally Guenther, and French hornist Scott Temple, Scottish Rite Center, 463 Paseo de Peralta, \$25, 505-988-1234, ticketssantafe.org.

Notes on Music: Mendelssohn

Santa Fe Concert Association artistic director Joseph Illick’s illustrated talk, 7:30 p.m. Tuesday, March 11, Temple Beth Shalom, 205 E. Barcelona Rd., \$20, discounts available, SFCA box office, 505-984-8759 or 505-988-1234, ticketssantafe.org.

Greensky Bluegrass Prog. bluegrass band, 7:30 p.m. Wednesday, March 12, Santa Fe Sol Stage & Grill, 37 Fire Place, \$15 in advance, \$20 at the door, 505-988-1234, ticketssantafe.org.

Yacouba Sissoko

Kora player, 7:30 p.m. Friday, March 14, Gig Performance Space, 1808-H Second St., \$20 at the door, gigsantafe.org.

Sharon Jones and the Dap-Kings

Soul and funk; Valerie June opens, 7:30 p.m. Tuesday, March 18, Lensic Performing Arts Center, 211 W. San Francisco St., \$34-\$54, 505-988-1234, ticketssantafe.org.

Adrian Legg

London-based fingerstyle guitarist, 7 p.m., March 18, Garrett’s Desert Inn Music Room, 311 Old Santa Fe Trail, \$25 in advance, brownpapertickets.com.

Santa Fe Symphony

Featuring violinist Clara-Jumi Kang; music of Bruch, Rachmaninov, and Borodin, 4 p.m. Sunday, March 23, the Lensic, \$22-\$76, 505-988-1234, ticketssantafe.org.

Beth Kennedy Jones

Tunes from the Lena Horne Songbook, with the Bert Dalton Trio, 6 p.m. Sunday and Monday, March 23-24, La Casa Sena Cantina, 125 E. Palace Ave., \$25, 505-988-9232.

Sounds of Santa Fe 2

Local musicians showcase, 7:30 p.m. Friday, March 28, Lensic Performing Arts Center, 211 W. San Francisco St., \$12, 505-988-1234, ticketssantafe.org.

An Evening With Joyce DiDonato

Mezzo-soprano, 6:30 p.m. Monday, March 31, the Lensic, 211 W. San Francisco St., concert only \$25-\$95, 505-988-1234, ticketssantafe.org; premium seats and dinner \$325, tickets available through the Santa Fe Concert Association, 505-984-8759.



Sharon Jones and the Dap-Kings on stage at the Lensic March 18.

UPCOMING EVENTS

Joshua Redman

Jazz saxophonist, 7 p.m. Friday, April 4, Outpost Performance Space, 210 Yale Blvd. S.E., \$30, students \$25, holdmyticket.com.

Neko Case Singer/songwriter, with The Dodos, 7:30 p.m. Monday, April 14, the Lensic, \$34-\$44, 505-988-1234, ticketssantafe.org.

The Dandy Warhols

Power-pop rockers, 7:30 p.m. Tuesday, April 29, Santa Fe Sol Stage & Grill, 37 Fire Place, \$27 in advance, 505-988-1234, ticketssantafe.org, \$35 at the door.

THEATER/DANCE

Water by the Spoonful

Teatro Paraguas presents Quiara Alegria Hudes’ drama, 7:30 p.m. Thursdays-Saturdays, 2 p.m. Sundays, March 6-16, Teatro Paraguas, 3205 Calle Marie, \$15, discounts available, 505-424-1601, teatroparaguas.org.

Les Liaisons Dangereuses

Playwright Christopher Hampton’s adaptation of the novel about seduction and revenge, 7 p.m. Friday and Saturday and 2 p.m. Sunday, March 7-16, Greer Garson Theatre, 1600 St. Michael’s Dr., \$12-\$15, discounts available, ticketsantafe.org, 505-988-1234.

The Other Place

Fusion Theatre Company presents Shar White’s drama, 8 p.m. Friday, 2 and 8 p.m. Saturday, March 7-8, Lensic Performing Arts Center, \$20-\$40, 505-988-1234, ticketssantafe.org.

The Queen of Madison Avenue A reading of Ron Bloomberg’s new play, 7 p.m. Thursday, March 13, the Lensic, 211 W. San Francisco St., \$10, 505-988-1234, ticketssantafe.org.

Aspen Santa Fe Ballet Choreography by Nicolo Fonte, Cayetano Soto, and Norbert de la Cruz, 7:30 p.m. Friday and Saturday, March 21-22, the Lensic, \$25-\$72, 505-988-1234, ticketssantafe.org, April 19 encore.

Southwest Irish Theater Festival

Theaterwork presents four plays and a concert, March 21-30, James A. Little Theater, 1060 Cerrillos Rd., reservations 505-471-1799.

HaMapah/The Map

Dancer Adam McKinney’s multimedia performance, 7:30 p.m. Saturday, 2 p.m. Sunday, March 22-23, The Dance Barns, 1140 Alto St., \$20, discounts available, 505-988-1234, ticketssantafe.org.

The Guru of Chai

Jacob Rajan’s one-man portrayal of modern India, 7:30 p.m. Tuesday, April 1, the Lensic, 211 W. San Francisco St., \$15-\$35, 505-988-1234, ticketssantafe.org.

Luma

Experimental-light theater performance, 2 and 7 p.m. Sunday, April 6, the Lensic, 211 W. San Francisco St., \$15-\$35, discounts available, 505-988-1234, ticketssantafe.org.

Spring Awakening

A musical based on Frank Wedekind’s once-controversial play, 7 p.m. Friday and Saturday, April 25-May 3, 2 p.m. Sunday, May 4, Greer Garson Theatre, 1600 St. Michael’s Dr., \$12 and \$15, 505-988-1234, ticketssantafe.org.

HAPPENINGS

AHA Festival of Progressive Arts

Application-launch party presented by After Hours Alliance; pop-up performances by Max Friedenberg, Aunt Cackle and The Coleslaw King, DJ Feathericci, Johnny Bell, Lady Gloves, and others, 7 p.m.-midnight Friday, Feb. 28, Muñoz Waxman Gallery, Center for Contemporary Arts, 1050 Old Pecos Trail, \$5-\$20 sliding scale, 505-982-1338.

Mardi Gras dance

Dave Dunkin Band, with J.D. Sipe, Clay Lowder, and Adam Jones, 7 p.m. Friday, Feb. 28, Bishop’s Lodge Ranch Resort & Spa, 1297 Bishops Lodge Rd., \$20, 505-982-2827, costumes, masks, and beads encouraged.

Digest This: Spirits & Poetry

A talk by distiller Colin Keegan followed by poet Hakim Bellamy reading from his collections, 6 p.m. Tuesday, March 4, SITE Santa Fe, 1606 Paseo de Peralta, \$10 includes tastings, sitesantafe.org, 505-989-1199, 21+.

Banff Mountain Film Festival World

Tour 2014 Action-sports-themed films, 7 p.m. Monday, March 10, the Lensic, 211 W. San Francisco St., \$16 one night, \$28 both nights, ticketssantafe.org, 505-988-1234.

Queen Bees & Masterminds: Creating a Culture of Dignity and Respect Amongst Teens

Presentation by author Rosalind Wiseman in support of Santa Fe Mountain Center, 7 p.m. Wednesday, March 12, Lensic Performing Arts Center, 211 W. San Francisco St., \$15, 505-988-1234, ticketssantafe.org.

Paper Dosa

Collaborative event between the owners of the San Francisco restaurant Dosa and the local art collective SCUBA in support of the CCA; sample South Indian fare on handmade plates, 7-10 p.m. Saturday, March 29, Center for Contemporary Arts, 1050 Old Pecos Trail, \$50, 505-982-1338, ccasantafe.org.

AT THE GALLERIES

Ellsworth Gallery 215 E. Palace Ave., 505-989-7900. Illuminated sculptures by Ilan Ashkenazi, through Saturday, Feb. 22.

Jean Cocteau Cinema Gallery 418 Montezuma Ave., 505-466-5528. Photographs of abandoned theaters by Matt Lambros, through March 17.

New Concept Gallery 610-A Canyon Rd., 505-795-7570. *Women Painters*, group show in conjunction with the global movement One Billion Rising in Justice, through March 14.

MUSEUMS & ART SPACES

SANTA FE

Center for Contemporary Arts 1050 Old Pecos Trail, 505-216-0672. *Icepop*, installation by Sandra Wang and Crockett Bodelson of the art collective SCUBA, through March 30, Muñoz Waxman Gallery ♦ *All the News That's Fit to Print*, group show, Spector-Ripps Project Space, both shows through March 30. Open Thursdays-Saturdays; visit ccasantafe.org.

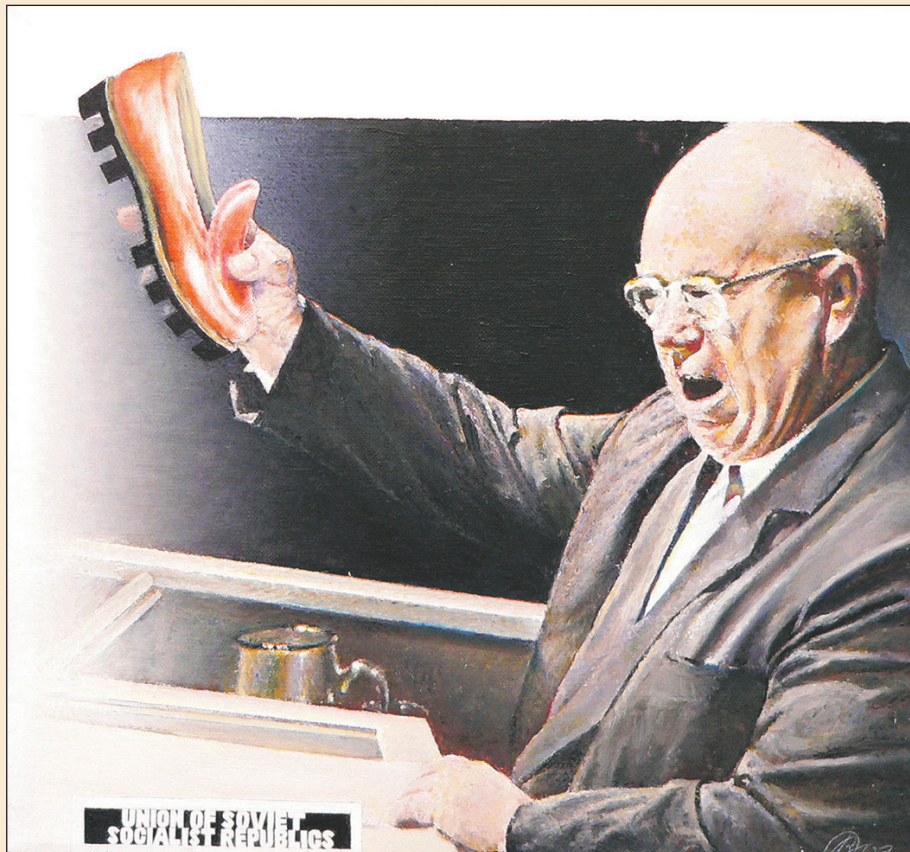
Georgia O'Keeffe Museum 217 Johnson St., 505-946-1000. *Georgia O'Keeffe and Ansel Adams: The Hawaii Pictures* ♦ *Abiquiú Views*; through Sept. 14. Paintings, drawings, sculptures, sketches, and photos by O'Keeffe in the permanent collection. Open daily; visit okeeffemuseum.org.

Museum of Contemporary Native Arts 108 Cathedral Place, 505-983-1666. *Articulations in Print*, group show, through July ♦ *Bon à Tirer*, prints from the permanent collection, through July ♦ *Native American Short Films*, continuous loop of five films from Sundance Institute's Native American and Indigenous Program. Closed Tuesdays; visit iaia.edu/museum.

Museum of Indian Arts & Culture 710 Camino Lejo, Museum Hill, 505-476-1269. *Woven Identities*, baskets representing 60 culture areas of western North America, through Monday, Feb. 24 ♦ *The Buchsbaum Gallery of Southwestern Pottery*, traditional and contemporary works ♦ *Here, Now, and Always*, more than 1,300 artifacts from the museum collection. Closed Mondays through Memorial Day; visit indianartsandculture.org.

Museum of International Folk Art 706 Camino Lejo, Museum Hill, 505-476-1200. *Tako Kichi: Kite Crazy in Japan*, exhibition of Japanese kites, through March ♦ *New World Cuisine: The Histories of Chocolate, Mate y Más* ♦ *Multiple Visions: A Common Bond*, international collection of toys and folk art ♦ *Brasil and Arte Popular*, pieces from the museum's Brazilian collection, through Aug. 10. Closed Mondays; visit internationalfolkart.org.

Museum of Spanish Colonial Art 750 Camino Lejo, Museum Hill, 505-982-2226. *Filigree & Finery: The Art of Adornment in New Mexico*, through May ♦ *Window on Lima: Beltrán-Kropp Peruvian Art Collection*, exhibit of gift items, including a permanent gift of 60 art pieces and objects from the estate of Pedro Gerardo Beltrán Espantoso, through May 27 ♦ *San Ysidro/St. Isidore the Farmer*, bultos, retablos, straw appliqué, and paintings on tin ♦ *Recent Acquisitions*, colonial and 19th-century Mexican art, sculpture, and furniture; also, work by young Spanish Market artists ♦ *The Delgado Room*, late-colonial-period re-creation. Visit spanishcolonialblog.org; closed Mondays.



UNM Art Museum shows paintings by Ilya Kabakov in the exhibit *The Blinding Light of History*.

New Mexico History Museum/ Palace of the Governors 113 Lincoln Ave., 505-476-5200. *Transformed by New Mexico*, Mezzanine Gallery exhibit of work by photographer Donald Woodman, reception 2-4 p.m. Sunday, Feb. 23, through Oct. 12 ♦ *Water Over Mountain*, Channing Huser's photographic installation ♦ *Cowboys Real and Imagined*, artifacts and photographs from the collection, through March 16 ♦ *Telling New Mexico: Stories From Then and Now*, core exhibit ♦ *Santa Fe Found: Fragments of Time*, the archaeological and historical roots of Santa Fe. Visit nmhistorymuseum.org; closed Mondays.

New Mexico Museum of Art 107 W. Palace Ave., 505-476-5072. *Renaissance to Goya: Prints and Drawings From Spain*, through March 9 ♦ *50 Works for 50 States: New Mexico*, through April 13. Closed Mondays; visit nmartmuseum.org.

Pablita Velarde Museum of Indian Women in the Arts 213 Cathedral Place, 505-988-8900. *Gathering of Dolls: A History of Native Dolls*, through April 27. Closed Mondays; visit pvmiwa.org.

Poeh Cultural Center and Museum 78 Cities of Gold Rd., 505-455-3334. *Nah Poeh Meng*, 1600-square-foot installation highlighting the works of Pueblo artists and pueblo history. Closed Saturdays and Sundays; visit poehcenter.org.

Santa Fe Children's Museum 1050 Old Pecos Trail, 505-989-8359. Houses permanent and temporary interactive exhibits. Visit santafechildrensmuseum.org; closed Mondays and Tuesdays through May.

SITE Santa Fe 1606 Paseo de Peralta, 505-989-1199. *Feast: Radical Hospitality in Contemporary Art*, group show, through May 18. Closed Mondays-Wednesdays; visit sitesantafe.org.

Wheelwright Museum of the American Indian 704 Camino Lejo, Museum Hill, 505-982-4636. *The Durango Collection*:

Native American Weaving in the Southwest, 1860-1880, through April 13. Open daily; visit wheelwright.org.

ALBUQUERQUE

Albuquerque Museum of Art & History 2000 Mountain Rd. N.W., 505-243-7255. *Behind Closed Doors: Art in the Spanish American Home, 1492-1898*, works from the Brooklyn Museum, through May 18 ♦ *Arte en la Charrería: The Artisanry of Mexican Equestrian Culture*, more than 150 examples of craftsmanship and design distinctive to the charro ♦ *African American Art From the Permanent Collection*, installation of drawings, prints, photographs, and paintings by New Mexico African American artists, through May 4. Closed Mondays; visit cabq.gov/culturalservices/albuquerque-museum/general-museum-information.

Holocaust and Intolerance Museum of New Mexico 616 Central Ave. S.W., 505-247-0606. Exhibits on overcoming intolerance and prejudice. Closed Sundays and Mondays; visit nmholocaustmuseum.org

Indian Pueblo Cultural Center 2401 12th St. N.W., 866-855-7902. *Our Land, Our Culture, Our Story*, a brief historical overview of the Pueblo world, and exhibit of contemporary artwork and craftsmanship representing each of the 19 pueblos. Open daily; visit indianpueblo.org

Maxwell Museum of Anthropology UNM campus, 1 University Blvd. N.E., 505-277-4405. Over 10 million individual archaeological, ethnological, archival, photo, and skeletal collections. Closed Sundays and Mondays; visit unm.edu/maxwell.

National Hispanic Cultural Center 1701 Fourth St. S.W., 505-604-6896. *En la Cocina With San Pascual*, works by New Mexico artists. Hispanic visual arts, drama, traditional and contemporary music, dance, literary arts, film, and culinary arts. Visit nationalhispaniccenter.org; closed Mondays.

New Mexico Museum of Natural History & Science 1801 Mountain Rd. N.W., 505-841-2804. *Timetracks*, core exhibits offer a journey through billions of years of history, from the formation of the universe to the present. Open daily; visit nmnaturalhistory.org.

UNM Art Museum 1 University of New Mexico Blvd., 505-277-4001. *Melanie Yazzie: Geographies of Memory*, works by the printmaker and sculptor ♦ *400 Years of Remembering and Forgetting: The Graphic Art of Floyd Solomon*, etchings by the late artist ♦ *The Blinding Light of History: Genia Chef, Ilya Kabakov, and Oleg Vassiliev*, Russian paintings and drawings ♦ *Breakthroughs: The Twentieth Annual Juried Graduate Exhibition*, all through May 17. Closed Sundays and Mondays; visit unmartmuseum.org.

ESPAÑOLA

Bond House Museum and Musión Museum y Convento 706 Bond St., 505-747-8535. Historic and cultural treasures exhibited in the home of railroad entrepreneur Frank Bond (1863-1945). Call for hours; visit plazadespanola.com.

LOS ALAMOS

Bradbury Science Museum 350 Central Ave., 505-667-4444. Information on the history of Los Alamos and the Manhattan Project, as well as over 40 interactive exhibits. Open daily; visit lanl.gov/museum.

TAOS

Harwood Museum of Art 238 Ledoux St., 575-758-9826. *Ken Price: Slow and Steady Wins the Race, Works on Paper 1962-2010*, drawings by the late artist (See story, Page 28) ♦ *Charles Mattox: Poetry in Motion*, works on paper from the 1970s ♦ *Art for a Silent Planet: Blaustein, Elder and Long*, works by local artists Jonathan Blaustein, Nina Elder, and Debbie Long, exhibits up through May 4 ♦ *Highlights From the Harwood Museum of Art's Collection of Contemporary Art* ♦ works of the Taos Society of Artists and Taos Pueblo Artists. Visit harwoodmuseum.org, closed Mondays.

Kit Carson Home & Museum 113 Kit Carson Rd., 575-758-4945. Original home of Christopher Houston "Kit" and Josefa Carson displaying artifacts, antique firearms, pioneer belongings, Carson memorabilia, and books about New Mexico. Open daily; visit kitcarsonhomeandmuseum.com.

La Hacienda de los Martinez 708 Hacienda Way, 575-758-1000. One of the few Northern New Mexico-style, late-Spanish-colonial-period "great houses" remaining in the American Southwest. Built in 1804 by Severino Martin. Open daily; visit taoshistoricmuseums.org.

Millicent Rogers Museum 1504 Millicent Rogers Rd., 575-758-2462. *Twelfth Annual Miniatures Show & Sale*, through March 2. Historical collections of Native American jewelry, ceramics, and paintings; Hispanic textiles, metalwork, sculpture, and a wide range of contemporary jewelry. Visit millicentrogers.org; closed Mondays through March.

Taos Art Museum and Fechin House 227 Paseo del Pueblo Norte, 575-758-2690. *The Animal World of Eugenie Glaman*, etchings and paintings, through March 2. Housed in the studio and home that artist Nicolai Fechin built for his family between 1927 and 1933. Open 10 a.m.-4 p.m. Closed Mondays; visit taosartmuseum.org

EXHIBITIONISM

A peek at what's showing around town



Alexander Dzurec and Jayita Sahni of Autotroph Design: Santa Fe Trails Bus Shelter on Sandoval St., photograph. Friends of Architecture Santa Fe presents *The Best: Award Winners from AIA Santa Fe*. AIA Santa Fe is the local chapter of the American Institute of Architects. The exhibition features architectural models, photographs, and drawings by architects who received awards or honorable mentions for 2013; it includes work by members of Autotroph Design, Archaeo Architects, Spears Architects, and Praxis Architects. The show opens at the Design Warehouse Gallery (101 W Marcy St., 505-988-1555) on Friday, Feb. 21, with a reception at 5 p.m.



Marcelo Suaznabar: El Gato con Saltamontes, 2013, oil on canvas.

Giacobbe-Fritz Fine Art (702 Canyon Road) presents a circus-themed group show opening with a 5 p.m. reception on Friday, Feb. 21. The exhibition includes work by gallery artists Craig Kosak, Ben Steele, Nocona Burgess, and others as well as work by visiting artists. The gallery pairs with Rooftop Pizzeria during the catered reception as part of ARTfeast's Edible Art Tour. Tickets for the tour are \$35 and are available at the gallery on the evening of the reception. Ticket sales benefit ARTsmart's educational programs in Santa Fe public schools. Call 505-986-1156.

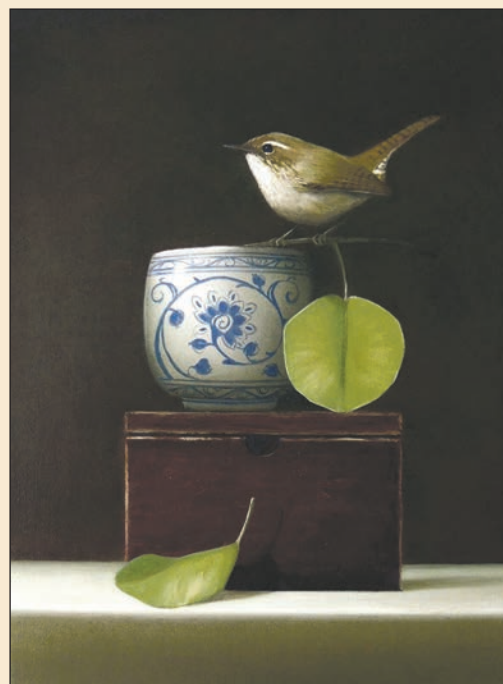


Lee Manning: Still Light 8, 2014, silver gelatin lith print.

An exhibition of Lee Manning's black-and-white photographs opens at Liquid Outpost coffee house and art space at the Inn and Spa at Loretto (211 Old Santa Fe Trail) on Friday, Feb. 21, with a 4 p.m. reception. Manning's intimate photographs contrast light and shadow using traditional darkroom techniques. Call the Liquid Outpost at 505-983-6503.



Nancy Judd: Opal (detail), 2013, mixed media. Environmental educator and fashion designer Nancy Judd's *Opal*, an installation work, is on view at the City of Santa Fe Arts Commission's Community Gallery (201 W. Marcy St., in the Convention Center) through May. *Opal* is a dress made with recycled materials and natural materials and is on display in the gallery's front window. The fairylike dress was inspired by a story that Judd read while growing up on the Oregon coast, about a young girl who could commune with nature spirits. Call 505-955-6705.



Sarah Siltala: Wren, 2013, oil on panel. Sage Creek Gallery (421 Canyon Road) presents *Alight*, an exhibition of paintings by Sarah Siltala. The artist uses traditional painting techniques employed by the Flemish masters in her still-life compositions, often depicting birds and butterfly species paired with inanimate objects such as fruits and fine ceramics. The show opens with a 5 p.m. reception on Friday, Feb. 21. Call 505-988-3444.