

# pasa week

compiled by Pamela Beach,  
pambeach@sfnewmexican.com  
pasatiempomagazine.com

## Friday, April 25

### GALLERY/MUSEUM OPENINGS

**333 Montezuma Arts** 333 Montezuma Ave., 505-988-9564. *Panorama: Gus Foster, Carlos Silva, and Roberto Vignoli*, photography exhibit, reception 5-7 p.m., through June 2.

#### Adobe Gallery

221 Canyon Rd., 505-955-0550. Paintings by the late Santa Fe Indian School student artists Gerald Nailor, Allan Houser, Quincy Tahoma, Pablita Velarde, and others, reception 4-6 p.m., through June 4.

#### Barbara Meikle Fine Art

236 Delgado St., 505-992-0400. *Flowers, Fur & Feathers*, group show, reception 5-8 p.m., a portion of the proceeds benefits The Wildlife Center in Española.

#### Charlotte Jackson Fine Art

554 S. Guadalupe St., 505-989-8688. *Heaven and Earth: Interference Paintings*, work by David Simpson, reception 5-7 p.m., through May 5.

**David Richard Gallery** 544 S. Guadalupe St., 505-983-9555. *Found*, paintings by Michael Scott, reception 5-7 p.m., through June 7.

#### Evoke Contemporary

550 S. Guadalupe St., 505-995-9902. *Spring Fever*, paintings by the late artist Louisa McElwain, reception 5-7 p.m., through May 23.

#### GF Contemporary

707 Canyon Rd., 505-983-3707. *Curated by Santa Fe*, group show, reception 5-7 p.m.

#### Giacobbe-Fritz Fine Art

702 Canyon Rd., 505-986-1156. *Curated by Santa Fe*, group show, reception 5-7 p.m.

#### Hunter Kirkland Contemporary

200-B Canyon Rd., 505-984-2111. *Three Painters Paint*, works by Peter Burega, Gregory Frank Harris, and Rick Stevens, reception 5-7 p.m., through May 7.

#### LewAllen Galleries at the Railyard

1613 Paseo de Peralta, 505-988-3250. *Opened Jars*, abstracts by Emily Mason, reception 5-7 p.m., through June 1.

#### Manitou Galleries

225 Canyon Rd., 505-986-9833. *Planes, Trains & Automobiles*, featuring B.C. Nowlin's paintings and works by other gallery artists, reception 5-7 p.m.

#### New Mexico Museum of Art

107 W. Palace Ave., 505-476-5072. *Southwestern Allure: The Art of the Santa Fe Art Colony*, including early 20th-century paintings by George Bellows, Andrew Dasburg, Marsden Hartley, and Cady Wells, through July 27.

**Phil Space** 1410 Second St., 505-983-7945. *Split Second in the Real World*, works on paper by John Andolsek, reception 5-8 p.m., through May 9.



Santa Fe Clay, 545 Camino de la Familia, shows ceramics by Peter Scherzer.

#### Santa Fe Clay

545 Camino de la Familia, 505-984-1122. *ABC of Dinnerware*, group show; *2014 Summer Preview Exhibit*, works by artists conducting summer workshops; reception 5-7 p.m., through June 7.

#### Tansej Contemporary

652 Canyon Rd., 505-995-8513. *Art + Design New York Fare*, group show, reception 5-7 p.m., through May 20.

#### Turner Carroll Gallery

725 Canyon Rd., 505-986-9800. *Altered*, group show, including works by Ann Weiner and Rusty Scruby, reception 5-7 p.m., through May 19.

#### Winterowd Fine Art

701 Canyon Rd., 505-992-8878. *A Family of Artists: Thomas Kirby Sr., Alice Kirby Jones, and Tom Kirby*, curator's talk 4:30 p.m., reception 5-7 p.m.

#### Zane Bennett Contemporary Art

435 S. Guadalupe St., 505-982-8111. *Dual Realities*, works on paper by Ian Ratowsky, reception 5-7 p.m., through May 24.

### CLASSICAL MUSIC

#### TGIF recital

New Mexico School for the Arts Chamber Orchestra, 5:30 p.m., First Presbyterian Church of Santa Fe, 208 Grant Ave., donations welcome, 505-982-8544, Ext. 16.

### THEATER/DANCE

#### Ballet Next

Classic and contemporary choreography by Mauro Bigonzetti and Brian Reeder, 7:30 p.m., the Lensic, \$20-\$75 in advance at the Performance Santa Fe box office (formerly Santa Fe Concert Association), 505-984-8759, or 505-988-1234, ticketssantafe.org. (See story, Page 32)

#### Cinderella Confidential

Santa Fe Performing Arts City Different Players, ages 7-12, 7 p.m., Armory for the Arts, 1050 Old Pecos Trail, \$8, 505-984-1370, sfperformingarts.org.

#### David Kwong

Magician and sleight-of-hand artist, 6:20 p.m., Jean Cocteau Cinema, 418 Montezuma Ave., \$20 in advance or at the box office, discounts available, jeancocteaucinema.com, Saturday encore.

**In the Heights** Presented by Santa Fe High School Musical Theater, 7:30 p.m., 2100 Yucca St., \$10 at the door, discounts available, www.santafehigharts.org.

#### Joe West's Theater of Death

One-act plays and musical interludes with Busy McCarroll, Anthony Leon, and Lori Ottino, 8 p.m., Engine House Theater, 2846 NM 14, Madrid, \$15 in advance at Candyman Strings & Things, Mine Shaft Tavern, or by calling 505-471-1916, Fridays and Saturdays through May 3, and on Thursday, May 1.

#### Kathleen Fontaine: The Man, the Mystery

One-woman show on transgender identity and the cultural gender divide, 8 p.m., Railyard Performance Center, 1611-B Paseo de Peralta, \$12 at the door.

#### Kimberly Akimbo

For Giving Productions presents David Lindsay-Abaire's dark comedy, 7 p.m., Casweck Galleries, 203 W. Water St., \$15 in advance, \$18 at the door, 505-438-6078, Saturday encore.

#### Left to Our Own Devices: Staying Connected in the Digital Age

Just Say It Theater presents a collaborative performance by students of Santa Fe University of Art & Design and New Mexico School for the Arts, 7-9 p.m., Warehouse 21, 1614 Paseo de Peralta, \$10, 505-820-7112, through Sunday.

#### Spring Awakening

A musical based on Frank Wedekind's once-controversial play, 7 p.m., Greer Garson Theatre, 1600 St. Michael's Dr., \$12 and \$15, 505-988-1234, ticketssantafe.org, Friday-Sunday through May 4.

### BOOKS/TALKS

**Sarah Stark** The local author discusses and signs copies of *Out There*, 6 p.m., Collected Works Bookstore, 202 Galisteo St., 505-988-4226.



Pasa's Little Black Book.....	50	In the Wings.....	53
Elsewhere.....	52	At the Galleries.....	54
People Who Need People.....	52	Museums & Art Spaces.....	54
Under 21.....	52	Exhibitionism.....	55
Pasa Kids.....	52		

**calendar guidelines** Please submit information and listings for *Pasa Week* no later than 5 p.m. Friday, two weeks prior to the desired publication date. Resubmit recurring listings every three weeks. Send submissions by mail to *Pasatiempo* Calendar, 202 E. Marcy St., Santa Fe, NM, 87501, by email to [pasa@sfnewmexican.com](mailto:pasa@sfnewmexican.com), or by fax to 505-820-0803. *Pasatiempo* does not charge for listings, but inclusion in the calendar and the return of photos cannot be guaranteed. Questions or comments about this calendar? Call Pamela Beach, *Pasatiempo* calendar editor, at 505-986-3019; or send an email to [pasa@sfnewmexican.com](mailto:pasa@sfnewmexican.com) or [pambeach@sfnewmexican.com](mailto:pambeach@sfnewmexican.com). See our calendar at [www.pasatiempomagazine.com](http://www.pasatiempomagazine.com), and follow *Pasatiempo* on Facebook and Twitter.

**Téa Obrecht** The author reads from *The Tiger's Wife*, 7:30 p.m., Great Hall, Peterson Student Center, St. John's College, 1160 Camino de Cruz Blanca, 505-984-6000.

## OUTDOORS

### Enchanted Hikes

The City of Santa Fe Recreation Division offers easy to moderate treks along the following trails: Dale Ball, Dorothy Stewart, Tesuque Creek, and Galisteo Basin Preserve; Session I, 9-11 a.m. Fridays through May 30; Session II, 9:30-11:30 a.m. Saturdays through May, preregister at Genoveva Chavez Community Center, 3221 Rodeo Rd., \$6.50 per hike or \$20 for full session, contact Michelle Rogers for registration information, 505-955-4047, chavezcenter.com.

### Twilight hike

A leisurely guided hike through the hills surrounding the village of Cerrillos, 7 p.m., Cerrillos Hills State Park, 16 miles south of Santa Fe off NM 14, meet at the main parking lot, a half mile north of the village, \$5 per vehicle, 505-474-0196.

## EVENTS

### Randall Davey house tours

Docent-led tours, weekly on Fridays, 2 p.m., Randall Davey Audubon Center, 1800 Upper Canyon Rd., \$5, RSVP to 505-983-4609.

## NIGHTLIFE

(See addresses below)

**Café Café** Trio Los Primos, dance to Latin favorites, 6 p.m., no cover.

**Cowgirl BBQ** Sean Healen Band, folksy rock, 8:30 p.m., no cover.

### The Den

Ladies night with DJ Luna, 9 p.m., call for cover.

### Duel Brewing

Indie-rock band TV Killers, 7-10 p.m., no cover.

### El Farol

Boom Roots Collective, reggae, 9 p.m., call for cover.

### La Fiesta Lounge at La Fonda

Sierra, country/rock, 8-11 p.m., no cover.

### Lodge Lounge at The Lodge at Santa Fe

Pachanga! Club Fridays with DJ Gabriel "Aztec Sol" Ortega spinning salsa, cumbia, bachata, and merenge, dance lesson, 8:30-9:30 p.m., call for cover.

### Palace Restaurant & Saloon

Rock band Fun Addix, 10 p.m., call for cover.

### Pranzo Italian Grill

David Geist, piano and vocals, 6-9 p.m., call for cover.

**Second Street Brewery** Hot Club of Santa Fe, Gypsy jazz, 6-9 p.m., no charge.

### Second Street Brewery at the Railyard

Gregg Daigle Band, electric Americana, 7-10 p.m., no cover.

**Shadeh** DJ 12 Tribe, 9 p.m.-4 a.m., call for cover.

**Tiny's** Jazz guitarist Marc Yaxley, 5:30 p.m.; dance band J.J. & The Hooligans, 8:30 p.m.-close, no cover.

### Vanessie

Pianist/vocalist Kathy Morrow, 6:30-9:30 p.m., call for cover.

## 26 Saturday

### OPERA IN HD

**The Met at the Lensic** The season continues with a live HD broadcast of Mozart's *Così fan Tutte*, 11 a.m., the Lensic, \$22-\$28, discounts available, ticketssantafe.org, 505-988-1234.

## Earth Day in Santa Fe



### Saturday and Sunday, April 26-27: Solar Fiesta

Workshops, a public forum, and solar-product demonstrations occur between 8 a.m. and 5 p.m.; Santa Fe Community College, 6401 Richards Ave., no charge.

### Saturday, April 26:

#### Home: Earth Day at the Railyard

Wise Fool New Mexico's giant-puppet procession opens the activities at 11:30 a.m.; live music, interactive art activities, and workshops are held through the day, Railyard Park, 740 Cerrillos Rd., no charge.

### Sunday, April 27:

#### Earth Day at Genoveva Chavez Community Center

Entertainment and educational expo; including solar-art projects, free tree saplings, performances, and games, 9:30 a.m.-2 p.m., Genoveva Chavez Community Center, 3221 Rodeo Rd., for more information contact Lisa Gulotta, 505-955-4009.

### San Miguel Chapel Concert Series

Balkan folk-music quartet Rumelia, with Paul Brown and Paul Wexler, 7:30 p.m., San Miguel Chapel, 401 Old Santa Fe Trail, \$10-\$20 suggested donation at the door, 505-577-2676.

## IN CONCERT

### Play-a-Thon on the Plaza

Presented by Santa Fe Youth Symphony Association; ensembles include Elementary Strings and Youth Philharmonia, 2-5:30 p.m., no charge, sfysa.org.

## PASA'S LITTLE BLACK BOOK

### 317 Aztec

317 Aztec St., 505-820-0150

### Agoyo Lounge at the Inn on the Alameda

303 E. Alameda St., 505-984-2121

### Anasazi Restaurant & Bar

Rosewood Inn of the Anasazi, 113 Washington Ave., 505-988-3030

### Betterday Coffee

905 W. Alameda St., 505-555-1234

### Bishop's Lodge Ranch Resort & Spa

1297 Bishops Lodge Rd., 505-983-6377

### Café Café

500 Sandoval St., 505-466-1391

### Casa Chimayó

409 W. Water St., 505-428-0391

### ¡Chispa! at El Mesón

213 Washington Ave., 505-983-6756

### Cowgirl BBQ

319 S. Guadalupe St., 505-982-2565

### The Den at Coyote Café

132 W. Water St., 505-983-1615

### Duel Brewing

1228 Parkway Dr., 505-474-5301

### El Cañon at the Hilton

100 Sandoval St., 505-988-2811

### Eldorado Hotel & Spa

309 W. San Francisco St., 505-988-4455

### El Farol

808 Canyon Rd., 505-983-9912

### El Paseo Bar & Grill

208 Galisteo St., 505-992-2848

### Evangelo's

200 W. San Francisco St., 505-982-9014

### High Mayhem Emerging Arts

2811 Siler Lane, 505-438-2047

### Hotel Santa Fe

1501 Paseo de Peralta, 505-982-1200

### Iconik Coffee Roasters

1600 Lena St., 505-428-0996

### Jean Cocteau Cinema

418 Montezuma Ave., 505-466-5528

### Junction

530 S. Guadalupe St., 505-988-7222

### La Boca

72 W. Marcy St., 505-982-3433

### La Casa Sena Cantina

125 E. Palace Ave., 505-988-9232

### La Fiesta Lounge at La Fonda

100 E. San Francisco St., 505-982-5511

### La Posada de Santa Fe Resort and Spa

330 E. Palace Ave., 505-986-0000

### Lensic Performing Arts Center

211 W. San Francisco St., 505-988-1234

### Lodge Lounge at The Lodge at Santa Fe

750 N. St. Francis Dr., 505-992-5800

### Low 'n' Slow Lowrider Bar at Hotel Chimayó de Santa Fe

125 Washington Ave., 505-988-4900

### The Matador

116 W. San Francisco St.

### Mine Shaft Tavern

2846 NM 14, Madrid, 505-473-0743

### Molly's Kitchen & Lounge

1611 Calle Lorca, 505-983-7577

### Museum Hill Café

710 Camino Lejo, Milner Plaza, 505-984-8900

### Music Room at Garrett's Desert Inn

311 Old Santa Fe Trail, 505-982-1851

### Palace Restaurant & Saloon

142 W. Palace Ave., 505-428-0690

### The Pantry Restaurant

1820 Cerrillos Rd., 505-986-0022

### Pranzo Italian Grill

540 Montezuma Ave., 505-984-2645

### Santa Fe Community Convention Center

201 W. Marcy St., 505-955-6705

### Santa Fe Sol Stage & Grill

37 Fire Place, solofsantafe.com

### Second Street Brewery

1814 Second St., 505-982-3030

### Second Street Brewery at the Railyard

1607 Paseo de Peralta, 505-989-3278

### Shadeh

Buffalo Thunder Resort & Casino, Pojoaque Pueblo, U.S. 84/285, 505-455-5555

### Sweetwater Harvest Kitchen

1512-B Pacheco St., 505-795-7383

### Taberna La Boca

125 Lincoln Ave., 505-988-7102

### Tiny's

1005 St. Francis Drive, Suite 117, 505-983-9817

### The Underground at Evangelo's

200 W. San Francisco St.

### Upper Crust Pizza

329 Old Santa Fe Trail, 505-982-0000

### Vanessie

434 W. San Francisco St., 505-982-9966

### Warehouse 21

1614 Paseo de Peralta, 505-989-4423

### Zia Dinner

326 S. Guadalupe St., 505-988-7008

## THEATER/DANCE

### Ballet Next

Classic and contemporary choreography by Mauro Bigonzetti and Brian Reeder, 7:30 p.m., the Lensic, \$20-\$75 in advance at Performance Santa Fe box office (formerly Santa Fe Concert Association), 505-984-8759, or 505-988-1234, ticketssantafe.org. (See story, Page 32)

**Cinderella Confidential** Presented by Santa Fe Performing Arts City Different Players, ages 7-12, 2 p.m., Armory for the Arts, 1050 Old Pecos Trail, \$8, 505-984-1370, sfperformingarts.org.

### David Kwong

Magician and sleight-of-hand artist, 2 and 8:30 p.m., Jean Cocteau Cinema, 418 Montezuma Ave., \$20 in advance or at the box office, jeancocteaucinema.com, discounts available.

**In the Heights** Presented by Santa Fe High School Musical Theater, 7:30 p.m., 2100 Yucca St., \$10 at the door, discounts available, www.santafhigharts.org.

### Joe West's Theater of Death

One-act plays with musical interludes by Busy McCarroll, Anthony Leon, and Lori Ottino, 8 p.m., Engine House Theater, 2846 NM 14, Madrid, \$15 in advance at Candyman Strings & Things, Mine Shaft Tavern, or by calling 505-471-1916, Fridays and Saturdays through May 3, and Thursday, May 1.

### Kathleen Fontaine: The Man, the Mystery

One-woman show on transgender identity and the cultural gender divide, 8 p.m., Railyard Performance Center, 1611-B Paseo de Peralta, \$12 at the door.

**Kimberly Akimbo** For Giving Productions presents David Lindsay-Abaire's dark comedy, 7 p.m., Casweck Galleries, 203 W. Water St., \$15 in advance, \$18 at the door, 505-438-6078.

### Left to Our Own Devices: Staying

**Connected in the Digital Age** Just Say It Theater presents a collaborative performance by students of Santa Fe University of Art & Design and New Mexico School for the Arts, 7-9 p.m., Warehouse 21, 1614 Paseo de Peralta, \$10, 505-820-7112, through Sunday.

**Spring Awakening** A musical based on Frank Wedekind's once-controversial play, 7 p.m., Greer Garson Theatre, 1600 St. Michael's Dr., \$12 and \$15, 505-988-1234, ticketssantafe.org, Fridays-Sundays through May 4.

## BOOKS/TALKS

### National Poetry Month

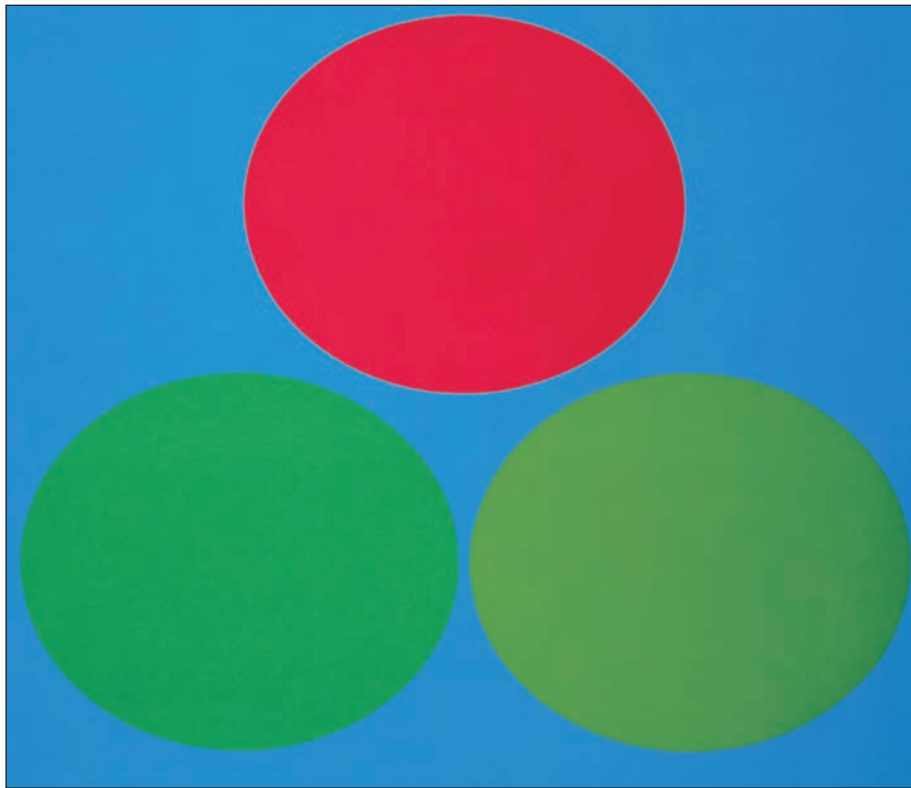
Cut + Paste Society presents 16 poets reading on the theme of wind in a program titled *Poetry Storm 3.0*, 2 p.m., Santa Fe Arts Commission Community Gallery, 201 W. Marcy St., no charge, Santa Fe Arts Commission, 505-955-6707.

**Opera Breakfast Lecture** Mary Kime discusses Mozart's *Così fan Tutte*, 9:30 a.m., Collected Works Bookstore, 202 Galisteo St., \$5 donation at the door, 505-988-4226.

**Santa Fe Opera 2014 Spotlight Series** Lecturer Oliver Prezant discusses opera themes and previews the SFO season, 2-3:30 p.m., Collected Works Bookstore, 202 Galisteo St., no charge, 505-989-4226.

## OUTDOORS

**Enchanted Hikes** The City of Santa Fe Recreation Division offers easy to moderate treks along the following trails: Dale Ball, Dorothy Stewart, Tesuque Creek, and Galisteo Basin Preserve; Session I, 9-11 a.m. Fridays through May 30; Session II, 9:30-11:30 a.m. Saturdays through May, preregister at Genoveva Chavez Community Center, 3221 Rodeo Rd., \$6.50 per hike or \$20 for full session, contact Michelle Rogers for registration information, 505-955-4047, chavezcenter.com.



David Richard Gallery, 544 S. Guadalupe St., shows paintings by Oli Sihvonon.

## EVENTS

**Contra dance** Folk dance with easy walking steps, live music by Megaband, beginners' class 7 p.m., dance 7:30 p.m., Odd Fellows Hall, 1125 Cerrillos Rd., \$9, students \$5, folkmads.org.

## NIGHTLIFE

(See Page 50 for addresses)

**¡Chispa! at El Meson!** Tierra Sonikete, flamenco/jazz fusion with guitarist Joaquin Gallegos, trumpeter J.Q. Whitcomb, and vocalist Kina Mendez, 7-10 p.m., no cover.

**Cowgirl BBQ** Bill Hearne Trio, classic country, 2-5 p.m.; Felix y los Gatos, Cajun/Gypsy swing, 8:30 p.m.; no cover.

**Duel Brewing** 50 Watt Whale, alternative pop/rock rhythm and groove, 7-10 p.m., no cover.

**La Fiesta Lounge at La Fonda** Sierra, country/rock, 8-11 p.m., no cover.

### Pranzo Italian Grill

Todd Lowry and Kari Simmons, piano and vocals, 6-9 p.m., call for cover.

### Second Street Brewery

Alto Street Band, newgrass, 6-9 p.m., no charge.

### Second Street Brewery at the Railyard

Alternative-country singer/songwriter Alex Culbreth, 7-10 p.m., no cover.

**Shadeh** DJ Flo Fader, 9 p.m.-4 a.m., call for cover.

### Sweetwater Harvest Kitchen

John Serkin, Hawaiian slack-key guitar, 6 p.m., no cover.

**Tiny's** Showcase karaoke with Nanci and Cyndi, 8:30 p.m., no cover.

### Vanessie

Pianist/vocalist Kathy Morrow, 6:30-9:30 p.m., call for cover.

## 27 Sunday

## GALLERY/MUSEUM OPENINGS

### New Mexico History Museum

113 Lincoln Ave., 505-476-5200. *Poetics of Light: Pinhole Photography*, works from Palace of the Governors Photo Archives; curator talk with Nancy Spencer and Eric Renner 1 p.m., reception and signing of the Museum of New Mexico Press

book *Poetics of Light: Contemporary Pinhole Photography* 2-4 p.m., through March 29, 2015. (See story, Page 28)

### Santa Fe Botanical Garden

715 Camino Lejo, Museum Hill, 505-471-9103. *Origami in the Garden*, sculpture by Kevin Box, reception 9 a.m.-5 p.m., through Oct. 25

## CLASSICAL MUSIC

**Senior piano recital** Eric Fricke performs music of Handel, Mozart, and Dylan Roger, 3 p.m., Great Hall, Peterson Student Center, St. John's College, 1160 Camino de Cruz Blanca, no charge, 505-984-6000.

## IN CONCERT

### St. Paul and The Broken Bones

Soul band, 7 p.m., Santa Fe Sol Stage & Grill, \$10, 505-988-1234, ticketssantafe.org, 21+.

## THEATER/DANCE

**Cinderella Confidential** Presented by Santa Fe Performing Arts City Different Players, ages 7-12, 2 p.m., Armory for the Arts, 1050 Old Pecos Trail, \$8, 505-984-1370, sfperformingarts.org.

### Left to Our Own Devices: Staying

**Connected in the Digital Age** Just Say It Theater presents a collaborative performance by students of Santa Fe University of Art & Design and New Mexico School for the Arts, 2-4 p.m., Warehouse 21, 1614 Paseo de Peralta, \$10, 505-820-7112.

### Pajama Men

The Albuquerque-based comedy duo in *Just the Two of Each of Us*, 7:30 p.m., the Lensic, \$15-\$35, 505-988-1234, ticketssantafe.org.

**Spring Awakening** A musical based on Frank Wedekind's once-controversial play, 2 p.m., Greer Garson Theatre, 1600 St. Michael's Dr., \$12 and \$15, 505-988-1234, ticketssantafe.org, Fridays-Sundays through May 4.

## BOOKS/TALKS

**Collected Works open mic** Welcoming unpublished poets, writers, acoustic musicians, and stage performers, 3-4:30 p.m., sign up at 2:45 p.m. for 10-minute spots, Collected Works Bookstore, 202 Galisteo St., 505-989-4226.

## Creatures Great and Small

Poetry readings; poets include Janet Eigner, Elizabeth Raby, and Jane Lipman, 4 p.m., Unitarian Universalist Congregation of Santa Fe, 107 W. Barcelona Rd.

## Journey Santa Fe Presents

*Left High and Dry: Managing Water in New Mexico*, a conversation with Paul Paryski, vice president of Northeast by Southwest, and KSFR Radio host Xubi Wilson, 11 a.m., Collected Works Bookstore, 202 Galisteo St., 505-989-4226.

## EVENTS

### Second Annual Comfort Food Classic

Eight local chefs prepare lasagna in support of the nonprofit Gerard's House, 1-3 p.m., La Posada de Santa Fe Resort and Spa, 330 E. Palace Ave., \$50 in advance at gerardshouse.org.

## NIGHTLIFE

(See Page 50 for addresses)

### Duel Brewing

Mariachi ensemble Alacran, 5-7 p.m., no cover.

### El Farol

Chanteuse Nacha Mendez, 7:30 p.m., call for cover.

### La Posada de Santa Fe Resort and Spa

Guitarist Wily Jim, Western swingabilly, 7-10 p.m., no cover.

### Vanessie

Pianist/vocalist Kathy Morrow, 6:30-9:30 p.m., call for cover.

## 28 Monday

## BOOKS/TALKS

### Southwest Seminars lecture

*Mountains, Plains, and Foothills: Paleoindian Occupations & Human Adaptations*, by University of Wyoming professor Marcel Kornfeld, 6 p.m., Hotel Santa Fe, 1501 Paseo de Peralta, \$12 at the door, 505-466-2775.



### Talking Heads

**Sarah Stark**  
The local author discusses and signs copies of *Out There* at **6 p.m. Friday, April 25**, at Collected Works Bookstore, 202 Galisteo St., **505-988-4226**.

## EVENTS

**Swing dance** Weekly all-ages informal swing dance, lessons 7-8 p.m., dance 8-10 p.m., Odd Fellows Hall, 1125 Cerrillos Rd., dance \$3, lesson and dance \$8, 505-473-0955.

## NIGHTLIFE

(See Page 50 for addresses)

### El Farol

Tiho Dimitrov, R & B, 8:30 p.m., no cover.

### Jean Cocteau Cinema

Broomdust Caravan, juke-joint honky-tonk and biker-bar rock, 7 p.m., call for cover.

### La Fiesta Lounge at La Fonda

Zenobia, soulful R & B, 7:30-11 p.m., no cover.

### Vanessie

Pianist David Geist, 6:30-9:30 p.m., call for cover.

## 29 Tuesday

### IN CONCERT

#### Santa Fe Public Schools Orchestras

Featuring middle and high school students, 6:30 p.m., doors open at 6 p.m., the Lencis, no charge.

**The Dandy Warhols** Power-pop rockers, 7:30 p.m., Santa Fe Sol Stage & Grill, \$27 in advance, 505-988-1234, ticketssantafe.org, \$35 at the door.

### BOOKS/TALKS

**Bobby Byrd** The local poet reads from *Otherwise My Life Is Ordinary*, 6 p.m., Collected Works Bookstore, 202 Galisteo St., 505-988-4226.

## EVENTS

### International folk dances

Weekly on Tuesdays, dance 8 p.m., lessons 7 p.m., Odd Fellows Hall, 1125 Cerrillos Rd., \$5 donation at the door.

## NIGHTLIFE

(See Page 50 for addresses)

### El Farol

Canyon Road Blues Jam, 8:30 p.m., call for cover.

### La Fiesta Lounge at La Fonda

Zenobia, soulful R & B, 7:30-11 p.m., no cover.

### Second Street Brewery

Guitarist/songwriter Maxwell Hughes, 6-9 p.m., no cover.

### Zia Diner

Weekly Santa Fe bluegrass jam, 6-8 p.m., no cover.

## 30 Wednesday

### CLASSICAL MUSIC

#### Santa Fe Symphony & Chorus

Music of Vivaldi and Williams, 7 p.m., Cathedral Basilica of St. Francis of Assisi, 131 Cathedral Place, pay-what-you-wish, 505-983-3530.

### THEATER/DANCE

**In the Heights** Presented by Santa Fe High School Musical Theater, 7:30 p.m., 2100 Yucca St., \$10 at the door, discounts available, www.santafehigharts.org.

### BOOKS/TALKS

#### American Master Edward Hopper

The docent-led Artist of the Week series continues with a discussion of the late painter, 12:15 p.m., New Mexico Museum of Art, 107 W. Palace Ave., by museum admission, 505-476-5075.

## NIGHTLIFE

(See Page 50 for addresses)

### ¡Chispa! at El Mesón

Singer/guitarist Jesus Bas, 7-9 p.m., no cover.



Illusionist David Kwong performs Friday and Saturday at Jean Cocteau Cinema.

**Cowgirl BBQ** D.K. & The Affordables, roots rock, 8 p.m.-close, no cover.

**Duel Brewing** Anthony Leon and The Chain, honky-trash indie rock, 7-10 p.m., no cover.

### El Farol

Guitarist/singer John Kurzweg, 8:30 p.m., no cover.

### Junction

Karaoke Night hosted by Michelle, 10 p.m.-1 a.m., no cover.

### La Fiesta Lounge at La Fonda

Bill Hearne Trio, classic country, 7:30-11 p.m., no cover.

### Palace Restaurant & Saloon

Bluesman Alex Maryol, 8:30 p.m., call for cover.

## 1 Thursday

### GALLERY/MUSEUM OPENINGS

#### Back Street Bistro

513 Camino de los Marquez, 505-982-3500. *Rules for Painting*, work by Robin Eldridge, through May.

### IN CONCERT

#### San Miguel Chapel Bell Tower Restoration

**Concert Series** Guitarist AnnaMaria Cardinalli performs *Legado y Leyenda*, San Miguel Chapel, 401 Old Santa Fe Trail, \$20 at the door.

### THEATER/DANCE

#### Broadway Bound!

Performances by National Dance Institute students, 6 p.m., NDI Dance Barns, 1140 Alto St., \$10-\$15, 505-983-7661, Thursdays-Saturdays through May 10.

#### In the Heights

Presented by Santa Fe High School Musical Theater, 7:30 p.m., 2100 Yucca St., \$10 at the door, discounts available, www.santafehigharts.org.

#### Joe West's Theater of Death

One-act plays with musical interludes by Busy McCarroll, Anthony Leon, and Lori Ottino, 8 p.m., Engine House Theater, 2846 NM 14, Madrid, \$15 in advance at Candyman Strings & Things, Mine Shaft Tavern, or by calling 505-471-1916.

### EVENTS

**Backyard Astronomy** Presentation in the SFCC Planetarium and outdoor viewing, 8-9 p.m., Santa Fe Community College, 6401 Richards Ave., \$5 at the door, discounts available, 505-428-1744.

**CineVision Film Festival** Santa Fe University of Art & Design student-run event, times vary, 1600 St. Michael's Dr., \$10 per film, \$20 festival pass, thescreensf.com, through May 4.

### Santa Fe Film Festival 2014

International documentaries, shorts, feature films, and accompanying events; hosted at Jean Cocteau Cinema and CCA Cinematheque; today through Sunday, May 4, tickets available online at santafeilmfestival.com, 505-988-7414, Ext. 102.

## NIGHTLIFE

(See Page 50 for addresses)

### ¡Chispa! at El Mesón

Jazz ensemble The Dalton Brothers, 7:30-9:30 p.m., no cover.

### El Farol

Guitarras con Sabor, Gypsy Kings-style rhythms, 8 p.m., no cover.

### La Fiesta Lounge at La Fonda

Bill Hearne Trio, classic country, 7:30-11 p.m., no cover.

### The Matador

DJ Inky Inc. spinning soul/punk/ska, 8:30 p.m., no cover.

## ► Elsewhere

### ALBUQUERQUE

**Richard Levy Gallery** 514 Central Ave. S.W., 505-766-9888. *Color Rhythms*, group show including work by Matt Magee and Suzanne Caporaal, opening Friday, April 25, through May 30.

#### American Indian Week: Pueblo Days

Native dance performances, films, and an art market, 9 a.m.-5 p.m. Friday-Sunday, April 25-27, Indian Pueblo Cultural Center, 2401 12th St. N.W., by museum admission, 866-855-7902.

#### 31st Gathering of Nations Pow Wow

Several hundred tribes participate in singing and dancing competitions; including an Indian Traders Market, Friday and Saturday, April 25-26, UNM Arena (The Pit), University and Avenida César Chávez boulevards, gatheringofnations.com, 505-836-2810.

#### Ani Ma'amin (I Believe)

Keshet Dance Company performs its Holocaust Memorial Day commemorative piece, 8 p.m. Saturday, 2 p.m. Sunday, April 26-27, \$15 in advance and at the door, brownpapertickets.com, discounts available.

**Eureka!** National Dance Institute New Mexico celebrates 20 years with its student showcase, 6:30 p.m. Thursday, May 1, Hiland Theater, 4800 Central Ave. S.E., \$10, 505-340-0219, Thursdays-Saturdays through May 10.

### The Bad Plus

Avant-garde jazz trio; with Reid Anderson on bass, Ethan Iverson on piano, and David King on drums, 7:30 p.m. Thursday and Friday, May 1-2, \$20-\$25, holdmyticket.com. (See *Sound Waves*, Page 18)

## ESPAÑOLA

### Northern New Mexico Jazz Festival

Hosted on Tuesday, April 29, by the Northern New Mexico College Music Department; 11 a.m. Jason Marsalis music clinic; 4 p.m. Los Alamos Big Band; 5 p.m. Santa Fe Great Big Jazz Band; 7 p.m. big-band concert with Jason Marsalis, no charge, 505-747-2295 or 505-747-2296.

## GLORIETA

### Mountain House Gallery

54-B NM 50, 505-757-6896. *Inspiration Squad's Big Art Show*, reception 3-6 p.m. Sunday, April 27, through May.

## ► People who need people

### Artists

#### Nominations for the 2014 Mayor's Awards for Excellence in the Arts

Nominations sought by the public for artists, writers, performers, philanthropists (individuals ages 21 and older), or organizations or businesses; in addition, young artists may be nominated for the Melissa Engestrom Youth Artist Award; information and forms available online at santafeartscommission.org or call 505-955-6707; deadline is 5 p.m. Friday, May 9.

### Volunteers

#### Plant a Row for the Hungry

A Food Depot program encouraging home gardeners to plant extra produce for donation to the organization; 505-471-1633.

## ► Under 21

### UNDER 21

#### 10th Annual Youth Music Night

Hip-hop bands To Build a Fire and Exalt, an exhibit, and food, 7 p.m. Friday, April 25, Museum of International Folk Art, 706 Camino Lejo, Museum Hill, no charge, 505-476-1200.

#### Santa Fe Science Café for Young Thinkers

The talk series geared toward ages 13-19 continues with *Conserving Otters of the World*, by Melissa Savage of the Four Corners Institute, 6 p.m. Wednesday, April 30, Georgia O'Keeffe Museum Education Annex, 123 Grant Ave., no charge, 505-946-1039.

## ► Pasa Kids

### Tropical Watercolors

Georgia O'Keeffe Museum youth program for ages 4-12 accompanied by an adult; 9:30-11:30 a.m. Saturday, April 26, 217 Johnson St., no charge 505-946-1039.

#### Easter egg hunt and story time

11 a.m. Saturday, April 26, Bee Hive Kids Books, 328 Montezuma Ave., no charge, 505-780-8051.

#### Children's Story Hour

Readings from picture books for children up to age 5; 10:45-11:30 a.m. weekly on Wednesdays and Thursdays, Collected Works Bookstore, 202 Galisteo St., no charge, 505-988-4226. ◀

# In the wings



## UPCOMING EVENTS

### MUSIC

#### Donald Rubinstein

Singer/songwriter, 7:30 p.m. Saturday, May 3, Gig Performance Space, 1808-H Second St., \$20 at the door, gigsantafe.com.

#### Perla Batalla

Singer/songwriter, 7:30 p.m. Monday, May 5, the Lensic, \$15-\$35, 505-988-1234, ticketssantafe.org.

**Regina Carter** The violinist celebrates the release of *Southern Comfort*, 7:30 p.m. Thursday and Friday, May 8-9, Outpost Performance Space, 210 Yale Blvd. S.E., Albuquerque, \$30, students \$25, holdmyticket.com.

#### Sangre de Cristo Chorale

The ensemble performs *Baroque Fireworks*, 5:30 p.m. Saturday, May 10, First Presbyterian Church of Santa Fe, 208 Grant Ave., \$20 in advance and at the door, discounts available, sdcchorale.org.

#### The Met at the Lensic

The HD broadcast series continues with Rossini's *La Cenerentola*, 11 a.m. and 6 p.m. Saturday, May 10, the Lensic, \$22 and \$28, 505-988-1234, ticketssantafe.org.

#### Leni Stern African Trio

Jazz ensemble; featuring Senegalese musicians Mamadou Ba and Alioune Faye, 8 p.m. Sunday, May 11, Gig Performance Space, 1808-H Second St., \$20 at the door, gigsantafe.com.

#### The Cave Singers

Folksy-roots band, 7:30 p.m. Tuesday, May 13, Santa Fe Sol Stage & Grill, \$12, 505-988-1234, ticketssantafe.org.

#### J.Q. Whitcomb & Five Below

Santa Fe trumpeter; with Ben Finberg on trombone, Dimi DiSanti on guitar, Andy Zadrozny on bass, and Arnaldo Acosta on drums, 7:30 p.m. Thursday, May 15, Outpost Performance Space, 201 Yale Blvd. S.E., Albuquerque, \$20, student discounts available, holdmyticket.com.

**Jenny Bird** Taos singer, with Omar Rane on guitar, Andy Zadrozny on bass, and John Trentacosta on drums, 7 p.m. Friday, May 16, Museum Hill Café, 710 Camino Lejo, \$25, 505-983-6820, santafemusiccollective.org.

#### Seventh Annual Crowdaddy Blues Fest

Includes Mississippi Rail Company, Junior Brown, Desert Southwest Blues Band, and Felix y Los Gatos, Saturday and Sunday, May 17-18, Madrid, \$15 daily, kids under 12 no charge, 505-988-1234, ticketssantafe.org.

#### Santa Fe Symphony

Beethoven's Ninth wraps up the 30th anniversary season, 7:30 p.m. Saturday, May 17, the Lensic, \$22-\$76, 505-988-1234, ticketssantafe.org.

#### Dave Grusin & Friends

Santa Fe Waldorf School presents the jazz pianist/composer; accompanied by John Rangel, Michael Glynn, and Ryan Lee; vocals by Barbara Bentre, 6:30 p.m. Thursday, May 22, James A. Little Theater, New Mexico School for the Deaf, 1060 Cerrillos Rd., \$25-\$65, 505-988-1234, ticketssantafe.org.

#### Outpost Performance Space gala fundraiser

Funk and jazz saxophonist Maceo Parker, 6:30 p.m. Friday, May 23, Outpost Performance Space, 210 Yale Blvd. S.E., Albuquerque, \$150, holdmyticket.com.

#### Austin Piazzolla Quintet

Tango ensemble, 7:30 p.m. Saturday, May 24, Gig Performance Space, 1808-H Second St., \$20 at the door, gigsantafe.com.

#### Ingrid Laubrock and Tom Rainey

Saxophonist and percussionist, 8 p.m. Thursday, May 29, Gig Performance Space, 1808-H Second St., \$20 at the door, gigsantafe.com.

#### Santa Fe Women's Ensemble

The choral group's 33rd season continues, 3 p.m. Saturday, June 7, First Presbyterian Church of Santa Fe, 208 Grant Ave.; 3 p.m. Sunday, June 8, Immaculate Heart of Mary Retreat and Conference Center Chapel, 50 Mount Carmel Rd.; \$25, students \$10, 505-988-1234, ticketssantafe.org, visit sfwe.org for details.

#### The Soulshine Tour

Michael Franti and Spearhead, SOJA, Brett Dennen, and Trevor Hall, 6 p.m. Saturday, July 5, The Downs of Santa Fe, 27475 W. Frontage Rd., \$44 and \$61, kids \$12, 505-988-1234, ticketssantafe.org and holdmyticket.com.

#### Ninth Annual New Mexico Jazz Festival

July 11-27 in Albuquerque and Santa Fe; Terri Lyne Carrington's Mosaic Project, Jack DeJohnette Trio, Claudia Villela Quartet, Henry Butler with Steven Bernstein & The Hot 9, tickets TBA, visit newmexicोजazzfestival.org for schedule.

#### Tony Bennett

With Antonia Bennett, 7 p.m. Sunday, Aug. 24, Santa Fe Opera, 301 Opera Dr., advance tickets available online at santafeopera.org, 505-986-5900.

#### Lila Downs

Singer/songwriter, 7:30 p.m. Wednesday, Aug. 27, the Lensic, \$39-\$69, 505-988-1234, ticketssantafe.org.

### THEATER/DANCE

#### I Love You, You're Perfect, now Change

Vignettes on dating, love, and marriage, 7:30 p.m. Fridays and Saturdays, 2 p.m. Sundays, May 2-11, Los Alamos Little Theatre Performing Arts Center, 1670 Nectar St., Los Alamos, \$12, discounts available, ialt.org, 505-622-5493.

**Art Spring 2014** New Mexico School for the Arts year-end performances featuring dance, theater, visual arts, and music, 6-7 p.m. Thursday and Friday, May 8-9; gala reception 5 p.m. Friday, the Lensic; street fair and exhibit at Georgia O'Keeffe Museum Education Annex at 7:15 p.m. Friday, \$5 and \$15, 505-988-1234, ticketssantafe.org.

#### One Woman Dancing 2014

Julie Brette Adams, 8 p.m. Friday and Saturday, 2 p.m. Sunday, May 9-11, Santa Fe Playhouse, 142 E. De Vargas St., \$20, discounts available, 505-988-4262.

**Spring Dance Concert** Student showcase with choreography by SFUA&D faculty and guest artists, 7 p.m. Wednesday, May 14, Greer Garson Theatre, Santa Fe University of Art & Design, 1600 St. Michael's Dr., \$12 and \$15, 505-988-1234, ticketssantafe.org.

#### Flexion

Wise Fool New Mexico's touring stilt and aerial performance, 7:30 p.m. Friday and Saturday, May 16-17, Railyard Park, 740 Cerrillos Rd., donations accepted, wisefoolnewmexico.org.

#### Frankie & Johnny in the Clair de Lune

A play by Terrence McNally, 7:30 p.m. Thursdays-Saturdays, 4 p.m. Sundays, May 30-June 8, Santa Fe Playhouse, 142 E. De Vargas St., gala opening \$30; general admission \$20; discounts available; 505-988-4262, contains nudity.

#### The Sound of Music

Musical Theatre Works Santa Fe presents the musical, 7 p.m. Fridays and Saturdays, 2 p.m. Sundays, June 6-15, Greer Garson Theatre, Santa Fe University of Art & Design, 1600 St. Michael's Dr., \$17 in advance, students \$12, musicaltheatreworks.net, \$20 at the door.

### HAPPENINGS

#### Europe Day in Santa Fe

Council on International Relations and World Affairs Councils of America host a dinner and a screening of Philippe Lioret's 2009 film *Welcome*, 5-9 p.m. Sunday, May 4, and a panel discussion and luncheon featuring Ambassador of Portugal Nuno Brito, 10 a.m.-3:30 p.m. Monday, May 5, Bishop's Lodge Ranch Resort & Spa, 1297 Bishops Lodge Rd., dinner and movie \$35, panel discussion and luncheon \$50, both days \$75, 505-982-4931, sfcir.org.

#### Lannan Foundation In Pursuit of Cultural Freedom series

Author Sandra Steingraber discusses the relationship between environmental factors and cancer with *GRITtv* host Laura Flanders, 7 p.m. Wednesday, May 7, the Lensic, 211 W. San Francisco St., \$6, discounts available, 505-988-1234, ticketssantafe.org.

#### 2014 IAIA Pow Wow

Gourd dancing 10-11 a.m. Saturday, May 10, grand entry 11 a.m.; dancing contests continue to 7 p.m., Institute of American Indian Arts, 83 Avan Nu Po Rd., no charge, 505-424-2300.

#### 2014 Mother's Day Tour

Historic Santa Fe Foundation hosts its annual event, 1-4 p.m. Sunday, May 11, School for Advanced Research, 660 Garcia St., \$5 at the gate, 505-983-2567.

#### Tenth Annual Native Treasures

More than 200 Native artists selling handcrafted works; benefit preview party with a reception for 2014 Living Treasures artists Joe Cajero and Althea Cajero, hors d'oeuvres, champagne, and live jazz ensemble, 7:30 p.m. Friday, May 23; early bird show 9 a.m. Saturday, May 24, art show and sale 10 a.m.-4 p.m. Saturday and Sunday, Santa Fe Community Gallery, Santa Fe Community Convention Center, 201 W. Marcy St., early bird admission \$20 at the door, Saturday show \$10 at the door, no charge on Sunday, preview party \$100 in advance online at nativetreasures.org (includes early bird ticket for Saturday admission).

#### New Mexico History Museum Fifth Anniversary Bash

Highlighting toys from the permanent collection with *Toys and Games: A New Mexico Childhood*, games held in the Palace of the Governors Courtyard, 2-4 p.m. Sunday, May 25, New Mexico History Museum, 113 Lincoln Ave., by museum admission, 505-476-5200.

#### Santa Fe Opera Insider Day

Saturdays from June 7 through Aug. 23, refreshments 8:30 a.m., staff-member-led backstage tours and talks 9 a.m., Santa Fe Opera, 301 Opera Dr., no charge, 505-986-5900.

#### Santa Fe Opera Ranch Tours

Offered at 10 a.m. Fridays, June 27, July 25, and August 22, Santa Fe Opera, 301 Opera Dr., \$12, combined backstage tour \$20, tickets available at the box office, 505-986-5900.

#### ¡Viva la Cultura!

Hispanic cultural festival running Tuesday, July 22, through Saturday, July 26; including performances by Cipriano Vigil y la Familia Vigil and Nosotros, a Spanish Market preview, lunch and dinner events, and film screenings; hosted by the Spanish Colonial Arts Society, Museum of Spanish Colonial Art, 750 Camino Lejo, Museum Hill, call 505-982-2226, Ext. 109 for advance tickets.



The Cave Singers on stage May 13, at Santa Fe Sol Stage & Grill.

## AT THE GALLERIES

### Andrew Smith Gallery Annex

203 W. San Francisco St., 505-984-1234. *Outer/Inner: Contemplation on the Physical and the Spiritual*, work by photographer Patrick Nagatani, through Wednesday, April 30.

### Evoke Contemporary

550 S. Guadalupe St., 505-995-9902. Works by Steve Huston, Nicholas Herrera, and Victor Wang, through Wednesday, April 30.

### Verve Gallery of Photography

219 E. Marcy St., 505-982-5009. *Diffusion: A Five-Year Retrospective*, group show celebrating the fifth anniversary of the magazine *Diffusion: Unconventional Photography*, through Saturday, April 26.

## MUSEUMS & ART SPACES

### SANTA FE

#### Center for Contemporary Arts

1050 Old Pecos Trail, 505-982-1338. *The Armory Show*, multimedia group exhibit and program series in celebration of CCA's 35th anniversary, Muñoz-Waxman Gallery, through May ♦ *Enveloping Space: Walk, Trace, Think*, Jane Lackey's immersive site-specific installation, Spector-Ripps Project Space, through May. Open Thursdays-Sundays; ccasantfe.org.

#### Georgia O'Keeffe Museum

217 Johnson St., 505-946-1000. *Georgia O'Keeffe and Ansel Adams: The Hawaii Pictures* ♦ *Abiquiú Views*; through Sept. 14. Paintings, drawings, sculptures, sketches, and photographs by O'Keeffe in the permanent collection. Open daily; okeeffemuseum.org.

#### Museum of Contemporary Native Arts

108 Cathedral Place, 505-983-1777. *BFA Student Exhibit*, traditional and contemporary showcase of works, through May 18 ♦ *Articulations in Print*, group show, through July ♦ *Bon à Tirer*, prints from the permanent collection, through July ♦ *Native American Short Films*, continuous loop of five films from Sundance Institute's Native American and Indigenous Program. Closed Tuesdays; iaia.edu/museum.

#### Museum of Indian Arts & Culture

710 Camino Lejo, Museum Hill, 505-476-1269. *Turquoise, Water, Sky: The Stone and Its Meaning*, highlights from the museum's collection of jewelry ♦ *Native American Portraits: Points of Inquiry*, vintage and contemporary photographs, through January 2015 ♦ *The Buchsbaum Gallery of Southwestern Pottery*, traditional and contemporary works ♦ *Here, Now, and Always*, more than 1,300 artifacts from the museum collection. Closed Mondays through Memorial Day; indianartsandculture.org.

#### Museum of International Folk Art

706 Camino Lejo, Museum Hill, 505-476-1200. *Wooden Menagerie: Made in New Mexico*, early 20th-century carvings, through Feb. 15, 2015 ♦ *Tako Kichi: Kite Crazy in Japan*, exhibition of Japanese kites, through Sunday, April 27 ♦ *New World Cuisine: The Histories of Chocolate, Mate y Más* ♦ *Multiple Visions: A Common Bond*, international collection of toys and folk art ♦ *Brasil and Arte Popular*, pieces from the museum's collection, through Aug. 10. Internationalfolkart.org; closed Mondays.



Museum of Contemporary Native Arts, 108 Cathedral Place, shows prints and drawings by the late Inuit artist Kenojuk Ashevak in the exhibit *Articulations in Print*.

#### Museum of Spanish Colonial Art

750 Camino Lejo, Museum Hill, 505-982-2226. *Filigree & Finery: The Art of Adornment in New Mexico*, through May ♦ *Window on Lima: Beltrán-Kropp Peruvian Art Collection*, through May 27 ♦ *San Ysidro/St. Isidore the Farmer*, bultos, retablos, straw appliqué, and paintings on tin ♦ *Recent Acquisitions*, colonial and 19th-century Mexican art, sculpture, and furniture; also, work by young Spanish Market artists ♦ *The Delgado Room*, late-colonial-period re-creation. Closed Mondays; spanishcolonialblog.org.

#### New Mexico History Museum/ Palace of the Governors

113 Lincoln Ave., 505-476-5200. *Poetics of Light: Pinhole Photography*, works from the museum collection, opening Sunday, April 27; curator talk with Nancy Spencer and Eric Renner 1 p.m., reception and signing of Museum of New Mexico Press book *Poetics of Light: Contemporary Pinhole Photography* 2-4 p.m., through March 29, 2015 ♦ *Transformed by New Mexico*, work by photographer Donald Woodman, through Oct. 12 ♦ *Water Over Mountain*, Channing Huser's photographic installation ♦ *Telling New Mexico: Stories From Then and Now*, core exhibit ♦ *Santa Fe Found: Fragments of Time*, the archaeological and historical roots of Santa Fe. Closed Mondays; nmhistorymuseum.org.

#### New Mexico Museum of Art

107 W. Palace Ave., 505-476-5072. *Southwestern Allure: The Art of the Santa Fe Art Colony*, including early 20th-century paintings by George Bellows, Andrew Dasburg, Marsden Hartley, and Cady Wells, opening Friday, April 25, through July 27 ♦ *Focus on Photography*, rotating exhibits ♦ *Beneath Our Feet*, photographs by Joan Myers ♦ *Grounded*, landscapes from the museum collection ♦ *Photo Lab*, interactive exhibit explaining the processes used to make color and platinum-palladium prints from the collection, through March 2015 ♦ *50 Works for 50 States: New Mexico*. Closed Mondays; nmartmuseum.org.

#### Pablita Velarde Museum of Indian Women in the Arts

213 Cathedral Place, 505-988-8900. *Gathering of Dolls: A History of Native Dolls*, through April 27. Closed Mondays; pvmlwa.org.

#### Poeh Cultural Center and Museum

78 Cities of Gold Rd., 505-455-3334. *Nah Poeh Meng*, 1600-square-foot installation highlighting the works of Pueblo artists and Pueblo history. Closed Saturdays and Sundays; poehcenter.org.

#### Santa Fe Children's Museum

1050 Old Pecos Trail, 505-989-8359. Interactive exhibits. Closed Mondays and Tuesdays through May; santafechildrensmuseum.org.

**SITE Santa Fe** 1606 Paseo de Peralta, 505-989-1199. *Feast: Radical Hospitality in Contemporary Art*, through May 18. Closed Mondays-Wednesdays; sitesantafe.org.

#### Wheelwright Museum of the American Indian

704 Camino Lejo, Museum Hill, 505-982-4636. Contemporary and historic Native American art. Open daily; wheelwright.org.

### ALBUQUERQUE

#### Albuquerque Museum of Art & History

2000 Mountain Rd. N.W., 505-243-7255. *Everybody's Neighbor: Vivian Vance*, family memorabilia and the museum's photo archives of the former Albuquerque resident, through January 2015 ♦ *Behind Closed Doors: Art in the Spanish American Home, 1492-1898*, works from the Brooklyn Museum, through May 18 ♦ *Arte en la Charrería: The Artisanry of Mexican Equestrian Culture*, more than 150 examples of craftsmanship and design distinctive to the charro ♦ *African American Art From the Permanent Collection*, installation of drawings, prints, photographs, and paintings by New Mexico African American artists, through May 4. cabq.gov/culturalservices/albuquerque-museum/general-museum-information; closed Mondays.

#### Indian Pueblo Cultural Center

2401 12th St. N.W., 866-855-7902. *Our Land, Our Culture, Our Story*, a brief historical overview of the Pueblo world, and exhibits of contemporary artwork and craftsmanship of each of the 19 pueblos. Weekend Native dance performances; indianpueblo.org.

#### Maxwell Museum of Anthropology

UNM campus, 1 University Blvd. N.E., 505-277-4405. The museum's collection of individual archaeological, ethnological, archival, photos, and skeletal items. Closed Sundays and Mondays; maxwellmuseum.unm.edu.

#### National Hispanic Cultural Center

1701 Fourth St. S.W., 505-604-6896. *En la Cocina With San Pascual*, works by New Mexico artists. Hispanic visual arts, drama, traditional and contemporary music, dance, literary arts, film, and culinary arts. Closed Mondays; nationalhispaniccenter.org.

#### New Mexico Museum of Natural History & Science

1801 Mountain Rd. N.W., 505-841-2804. *Timetracks*, core exhibits offer a journey through billions of years of history. Open daily; nmnaturalhistory.org.

#### UNM Art Museum

1 University of New Mexico Blvd., 505-277-4001. *Melanie Yazzie: Geographies of Memory*, works by the printmaker and sculptor ♦ *400 Years of Remembering and Forgetting: The Graphic Art of Floyd Solomon*, etchings by the late artist ♦ *The Blinding Light of History: Genia Chef, Ilya Kabakov, and Oleg Vassiliev*, Russian paintings and drawings ♦ *Breakthroughs: The Twentieth Annual Juried Graduate Exhibition*, all through May 17. Closed Sundays and Mondays; unmartmuseum.org.

### LOS ALAMOS

#### Bradbury Science Museum

1350 Central Ave., 505-667-4444. Information on the history of Los Alamos and the Manhattan Project, as well as over 40 interactive exhibits. Open daily; lanl.gov/museum.

#### Los Alamos Historical Museum

1050 Bathtub Row, 505-662-4493. *Edith and Tilano: Bridges Between Two Worlds*, artifacts of the early homesteaders, through May. Core exhibits on area geology, homesteaders, and the Manhattan Project. Housed in the Guest Cottage of the Los Alamos Ranch School. Open daily; losalamoshistory.org.

### TAOS

#### Harwood Museum of Art

238 Ledoux St., 575-758-9826. *Ken Price: Slow and Steady Wins the Race, Works on Paper 1962-2010*, drawings by the late artist ♦ *Charles Mattox: Poetry in Motion*, works on paper from the 1970s ♦ *Art for a Silent Planet: Blaustein, Elder and Long*, works by local artists Jonathan Blaustein, Nina Elder, and Debbie Long, exhibits up through May 4 ♦ *Highlights From the Harwood Museum of Art's Collection of Contemporary Art* ♦ *Death Shrine I*, work by Ken Price ♦ works of the Taos Society of Artists and Taos Pueblo Artists. Open daily through October; harwoodmuseum.org.

#### E.L. Blumenschein Home and Museum

222 Ledoux St., 575-758-0505. Hacienda art from the Blumenschein family collection, European and Spanish colonial antiques. Open daily; taoshistoricmuseums.org.

#### La Hacienda de los Martinez

708 Hacienda Way, 575-758-1000. One of the few Northern New Mexico-style, late-Spanish-colonial-period "great houses" remaining in the American Southwest. Built in 1804 by Severino Martin. Open daily; taoshistoricmuseums.org.

#### Millicent Rogers Museum

1504 Millicent Rogers Rd., 575-758-2462. Historical collections of Native American jewelry, ceramics, and paintings; Hispanic textiles, metalwork, and sculpture; and a wide range of contemporary jewelry. Open daily through October; millicentrogers.org.

#### Taos Art Museum at Fechin House

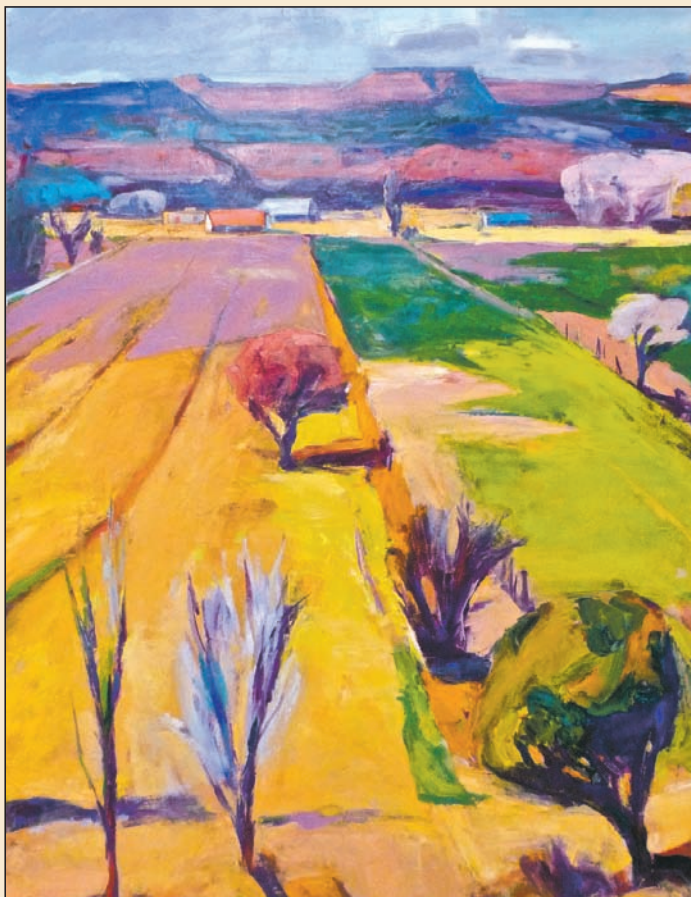
227 Paseo del Pueblo Norte, 575-758-2690. *Intimate and International: The Art of Nicolai Fechin*, paintings and drawings, through Sept. 21. Housed in the studio and home that Fechin built for his family between 1927 and 1933. Closed Mondays; taosartmuseum.org.

# EXHIBITIONISM

A peek at what's showing around town



**Adriana Reyes Newell: *Come Back*, 2014, digital photograph.** Red Dot Gallery (826 Canyon Road) presents its *Annual Spring Art Exhibition* of works by students and alumni of the Santa Fe Community College as well as students from Clovis Community College, the Institute of American Indian Arts, and Northern New Mexico College. The show includes jewelry, ceramics, painting, photography, and other mediums. There is a 4:30 p.m. reception on Friday, April 25. Red Dot is open Fridays through Sundays only. Call 505-820-7338.



**Gregory Frank Harris: *New Mexico Modern No. 7, Ojo Caliente*, 2013, oil on canvas.** Hunter Kirkland Contemporary (200-B Canyon Road) presents *Three Painters Paint*, an exhibition of works by Gregory Frank Harris, Rick Stevens, and Peter Burega. The artists are inspired by the landscapes of New Mexico. Burega paints atmospheric abstract expressionist canvases. Harris' realist landscapes combine vibrant color and gestural brushwork. Stevens' intimate abstractions capture a feeling of woods, ponds, and streams. There is a 5 p.m. opening reception on Friday, April 25. Call 505-984-2111.



**Emily Mason: *Reactivated*, 2013, oil on canvas.**

Emily Mason's abstractions combine saturated and opaque hues in nonrepresentational, gestural paintings. *Opened Jars*, an exhibit of 38 pieces, opens at LewAllen Galleries at the Railyard (1613 Paseo de Peralta) on Friday, April 25, with a 5 p.m. reception. Call 505-988-3250.



**Bill Eppridge: *John Lennon on the train from New York to Washington for the Beatles' concert at Washington Coliseum, Feb. 11, 1964*, gelatin silver print.**

Monroe Gallery of Photography (112 Don Gaspar Ave.) presents an exhibit of photographs taken by Bill Eppridge (1938-2013) in 1964, covering the arrival of the Beatles in America as well as events surrounding the funeral of civil-rights worker James Chaney, one of three men murdered in Mississippi in June of that year. The exhibit celebrates the recent publication of Eppridge's book *The Beatles: Six Days That Changed the World, February, 1964*. Eppridge's wife and editor, Adrienne Aurichio, is present for the opening reception at 5 p.m. on Friday, April 25. Call 505-992-0800.



**Sheryl Zacharia: *Orange Moon Over Santa Fe*, 2014, ceramic.**

Tansey Contemporary (652 Canyon Road) presents *Art+Design New York Fare*. The exhibit includes works originally intended for an art fair in New York City. The fair's cancellation prompted the gallery showing, which includes pieces by Rachel Bess, Geoffrey Gorman, Emma Varga, and others. *Art+Design New York Fare* opens Friday, April 25. There is no reception. Call 505-995-8513.