

# pasa week

compiled by Pamela Beach,  
pambeach@sfnwmexican.com  
pasatiempomagazine.com

## Friday, Jan. 31

### GALLERY/MUSEUM OPENINGS

#### A Sea Gallery

407 S. Guadalupe St., 505-988-9140. Works by Elaine Alghany, Susan Jay, and Anne Russell, reception 5-7 p.m., through Feb. 15.

#### Andrew Smith Gallery Annex

203 W. San Francisco St., 505-984-1234. *Outer/Inner: Contemplation on the Physical and the Spiritual*, work by photographer Patrick Nagatani, reception 5-8 p.m., through March 14. (See story, Page 36)

#### Canyon Road Contemporary Art

403 Canyon Rd., 505-983-0433. *Clouds*, pastels by Kathy Beekman, through Feb. 9.

#### David Richard Gallery

544 S. Guadalupe St., 505-983-9555. *Gesture Then and Now: The Legacy of Abstract Expressionism*, group show, through Feb. 22; *Oli Sihvonen: In Motion*, paintings from 1988-1991, through March 8; *Thomas Downing: Paintings From the 1970s*, through Feb. 28; reception 5-7 p.m.

#### Evolve Contemporary

130-F Lincoln Ave., 505-955-9902. Portraits by Daniel Sprick, reception 5-7 p.m., through Saturday.

#### GVG Contemporary

202 Canyon Rd., 505-982-1494. *David Loughridge Photography*, memorial exhibit, reception 5-7 p.m., through Feb. 7.

#### Santa Fe Classic Cars

1091 Siler Rd., 505-690-2638. *Cars of the Stars*, new work by James T. Baker, reception 4-6 p.m.

**SITE Santa Fe** 1606 Paseo de Peralta, 505-989-1199. *Feast: Radical Hospitality in Contemporary Art*, group show, reception 5:30-7 p.m., through May 18.

**Than Povi Fine Art Gallery** 6 Banana Lane, 10 miles north of Santa Fe off US 84/285, 505-301-3956. *George Toya: The Spirit of Color*, mixed media, reception 4-6 p.m., through March 21.

#### Zane Bennett Contemporary Art

435 S. Guadalupe St., 505-982-8111. *Under 35: Part II*, group show, through Feb. 15.

#### Vivo Contemporary

725 Canyon Rd., 505-982-1320. *Giving Voice to Image 2*, collaborative group show of poetry and art, reception with readings 5-7 p.m.

### CLASSICAL MUSIC

#### TGIF recital: Chancel Choir

Mozart's Requiem, with Jan Worden-Lackey on organ, 5:30 p.m., First Presbyterian Church of Santa Fe, 208 Grant Ave., donations accepted, 505-982-8544, Ext. 16.

### IN CONCERT

#### Dezron Douglas Black Lion Quartet

Douglas on bass, Josh Evans on trumpet,



Santa Fe Clay, 545 Camino de la Familia, shows work by ceramicist Abbie Salisbury.

Lummie Spann Jr. on alto saxophone, and Eric McPherson on drums, 6 and 8 p.m. sets, *The Den*, 132 W. Water St., \$55-\$250, SFé Jazz, 505-670-6482. (See story, Page 24)

### THEATER/DANCE

#### Don't Panic: It's Only Finnegans Wake

Solo performance by Adam Harvey, 7 p.m., Teatro Paraguas Studio, 3205 Calle Marie, \$12, 505-424-1601, encores Saturday and Sunday.

#### The Merry Wives of Windsor

Arden Shakespeare Festival presents the comedy, 7:30 p.m., James A. Littler Theater, New Mexico School for the Deaf, 1060 Cerrillos Rd., \$20, discounts available, 505-603-7479, through Sunday.

#### National Theatre Live in HD

*Coriolanus*, Donmar Warehouse's adaptation of Shakespeare's tragedy, 7 p.m., the Lensic, 211 W. San Francisco St., \$22, student discounts available, 505-988-1234, ticketsantafe.org. (See story, Page 26)

### BOOKS/TALKS

#### Freedom Depends on Its Bondage: The Return to Plato in the Philosophies of Leo Strauss and Emmanuel Levinas

A lecture by Princeton professor Leora Batnitzky, 7:30 p.m., Great Hall, Peterson Student Center, St. John's College, 1160 Camino de Cruz Blanca, no charge, 505-984-6000.

### EVENTS

**Gotta Dance** Fundraiser for Casa Milagro, KSFR Radio, and Center for Contemporary Arts, DJ-generated music, 6:30 p.m., Muñoz Waxman Gallery, Center for Contemporary Arts, 1050 Old Pecos Trail, \$25 in advance at ccasantafe.org and at the door, discounts available.

### NIGHTLIFE

(See Page 50 for addresses)

#### ¡Chispa! at El Mesón

Three Faces of Jazz, revolving piano trio, 7:30-10:30 p.m., no cover.

**Cowgirl BBQ** Aaron Hamre, bluesy, acoustic rock, 5-7:30 p.m.; Broomdust Caravan, juke-joint honky-tonk and biker-bar rock, 8 p.m., no cover.

**Duel Brewing** Santa Fe Revue, country, bluegrass, and R & B mash-up, 7 p.m., no cover.

**El Farol** John Kurzweg Band, alt. folk-rock, 9 p.m., call for cover.

**La Casa Sena Cantina** Nonsense, musical comedy, 5:30 and 8:30 p.m., call for cover.

**La Posada de Santa Fe Resort and Spa** Nacha Mendez Trio, pan-Latin rhythms, 6:30-9:30 p.m., no cover.

**Low 'n' Slow Lowrider Bar at Hotel Chimayó** Kodama Jazz Trio, featuring Milton Villarubia on drums, Jeremy Bleich on bass, and Robert Muller on keyboard, 9:30 p.m., no cover.

#### Palace Restaurant & Saloon

C.S. Rockshow, classic rock, 9:30 p.m., call for cover.

#### Second Street Brewery

Folk rockers The Bus Tapes, with Heather Tanner on guitar and vocals, Case Tanner on bass guitar, David Gold on lead guitar, and Milton Villarubia on drums, 6-9 p.m., no cover.



Pasa's Little Black Book.....	50	In the Wings.....	53
Elsewhere.....	52	At the Galleries.....	54
People Who Need People.....	52	Libraries.....	54
Under 21.....	52	Museums & Art Spaces.....	54
Pasa Kids.....	52	Exhibitionism.....	55

## calendar guidelines

Please submit information and listings for *Pasa Week* no later than 5 p.m. Friday, two weeks prior to the desired publication date. Resubmit recurring listings every three weeks. Send submissions by mail to *Pasatiempo* Calendar, 202 E. Marcy St., Santa Fe, NM, 87501, by email to [pasa@sfnwmexican.com](mailto:pasa@sfnwmexican.com), or by fax to 505-820-0803. *Pasatiempo* does not charge for listings, but inclusion in the calendar and the return of photos cannot be guaranteed. Questions or comments about this calendar? Call Pamela Beach, *Pasatiempo* calendar editor, at 986-3019; or send an email to [pasa@sfnwmexican.com](mailto:pasa@sfnwmexican.com) or [pambeach@sfnwmexican.com](mailto:pambeach@sfnwmexican.com). See our calendar at [www.pasatiempomagazine.com](http://www.pasatiempomagazine.com), and follow *Pasatiempo* on Facebook and Twitter.



## I Saturday

### GALLERY/MUSEUM OPENINGS

#### Flying Cow Gallery

Warehouse 21, 1614 Paseo de Peralta, 505-989-4423. Group show of works by Dragonfly Art Studio students (ages 5-14), reception 4-7 p.m., through Feb. 11.

#### Santa Fe Public Library Main Branch

145 Washington Ave., 505-955-6781. *Cutups*, works on paper and mixed media by JoAnn Garges, through February.

#### Santa Fe Public Library, Southside Branch

6599 Jaguar Dr., 505-955-2810. Pastel landscapes by Dee Gamble, through February.

### CLASSICAL MUSIC

#### Canticum Novum winter concert

The chorus and orchestra perform works by Mozart, Schubert, Cimarosa, Hovhaness, and Holst, 7 p.m.; lecture by Oliver Prezant one hour ahead of show, St. Francis Auditorium, New Mexico Museum of Art, 107 W. Palace Ave., \$25 and \$35, ticketssantafe.org, 505-988-1234, discounts available.

### IN CONCERT

#### George Winston

R & B composer/pianist, 7:30 p.m., Lencis Performing Arts Center, 211 W. San Francisco St., \$28-\$52, 505-988-1234, ticketssantafe.org.

### THEATER/DANCE

#### Don't Panic: It's Only Finnegans Wake

Solo performance by Adam Harvey, 7 p.m., Teatro Paraguas Studio, 3205 Calle Marie, \$12, 505-424-1601, concludes Sunday.

#### The Jewel in the Manuscript opening-night gala

Rosemary Zibart's play about Fyodor Dostoevsky, 7:30 p.m., Warehouse 21,

1614 Paseo de Peralta, \$30 includes post-performance party, 505-989-4423, Thursday, Saturday, and Sunday performances through Feb. 16. (See story, Page 34)

#### The Merry Wives of Windsor

Arden Shakespeare Festival presents the comedy, 7:30 p.m., James A. Littler Theater, New Mexico School for the Deaf, 1060 Cerrillos Rd., \$20, discounts available, 505-603-7479, through Sunday.

#### Happenings With Lauren Camp

Spoken-word performance launching the poet's book *The Dailiness*; with music by multi-instrumentalist Char Rothchild and bassist Paul Brown, 4 p.m., Teatro Paraguas Studio, 3205 Calle Marie, by donation.

### BOOKS/TALKS

#### Art Matters/Collections program

Panelists Lilly Fenichel, Allan Graham, and David Eichholtz discuss the exhibit *Oli Sihvonen: In Motion*, 2-3:30 p.m., David Richard Gallery, 544 S. Guadalupe St., 505-983-9555, visit artmattersantafe.org for full schedule of events.

**Paige Grant** The author reads from *Kitten Caboodle*; kitten adoptions follow, 10:30 a.m., Op. Cit. Books, 500 Montezuma Ave., Suite 101, Sanbusco Center, 505-428-0321.

#### The Joys and Challenges of Collecting

A discussion with Eric Gustafson; part of Santa Fe Gallery Association's Art Matters/Collections program, 3-5 p.m., Pippin Contemporary, 200 Canyon Rd., 505-795-7476.

### EVENTS

**Santa Fe Farmers Market** Local goods sold weekly on Saturday, 8 a.m.-1 p.m., Farmers Market Pavilion, 1607 Paseo de Peralta, santafefarmersmarket.com.

#### Souper Bowl XX

Annual Food Depot fundraiser with local-chef-prepared soups and recipes, noon, Santa Fe Community Convention Center, 201 W. Marcy St., \$30 in advance, \$35 at the door; children ages 6-12 \$10, 505-471-1633.

#### Trader Walt's Southwestern & International Marketplace

More than 100 vendor booths with antiques, folk and fine art, books, jewelry, and snacks, 8 a.m.-3 p.m., El Museo Cultural de Santa Fe, 555 Camino de la Familia, no charge.

### NIGHTLIFE

(See addresses below)

#### Anasazi Restaurant & Bar

Guitarist Jesus Bas, 7-10 p.m., no cover.

#### Cowgirl BBQ

Bill Hearne Trio, classic country, 2-5 p.m.; Americana band Joshua Powell & The Great Train Robbery, 8:30 p.m., no cover.

#### Duel Brewing

Local contemporary Balkan-folk trio Rumelia, 7-10 p.m., no cover.

#### El Farol

Controlled Burn, classic rock and country covers, 9 p.m., call for cover.

#### ¡Chispa! at El Mesón

Noche de Flamenco with Flamenco Conpaz Troupe, 7-10 p.m., call for cover.

#### La Posada de Santa Fe Resort and Spa

Pat Malone Jazz Trio, featuring vocalist Whitney Carroll Malone, 6-9 p.m., call for cover.

#### Mine Shaft Tavern

Booze Bombs, German rockabilly, 7-11 p.m., call for cover.

#### Pranzo Italian Grill

Pianist David Geist and vocalist Julie Trujillo, 6-9 p.m., call for cover.

#### Second Street Brewery

Railyard Reunion Band, bluegrass, 6-9 p.m., no cover.

#### Second Street Brewery at the Railyard

Folk singer/songwriter Steve Guthrie, 7-10 p.m., no cover.

#### Tiny's Showcase karaoke with

Nanci and Cyndi, 8:30 p.m., no cover.

## 2 Sunday

### CLASSICAL MUSIC

#### Canticum Novum winter concert

The chorus and orchestra perform works by Mozart, Schubert, Cimarosa, Hovhaness, and Holst, 3 p.m.; lecture by Oliver Prezant one hour ahead of show; St. Francis Auditorium, New Mexico Museum of Art, 107 W. Palace Ave., \$25 and \$35, ticketssantafe.org, 505-988-1234, discounts available.

### IN CONCERT

#### Melanie Monsour

Piano recital with bassist Paul Brown: jazz, Middle Eastern, and Latin music, noon-2 p.m., Museum Hill Café, 710 Camino Lejo, no charge, melaniemonsour.com.

### THEATER/DANCE

#### Don't Panic: It's Only Finnegans Wake

Solo performance by Adam Harvey, 2 p.m., Teatro Paraguas Studio, 3205 Calle Marie, \$12, 505-424-1601.

#### The Jewel in the Manuscript

Rosemary Zibart's play about Fyodor Dostoevsky, 2 p.m., discussion with students follows, Warehouse 21, 1614 Paseo de Peralta, \$20, students \$10, 505-989-4423, Thursday, Saturday, and Sunday performances through Feb. 16. (See story, Page 34)

## PASA'S LITTLE BLACK BOOK

#### 317 Aztec

317 Aztec St., 505-820-0150

#### Agoyo Lounge at the Inn on the Alameda

303 E. Alameda St., 505-984-2121

#### Anasazi Restaurant & Bar

Rosewood Inn of the Anasazi, 113 Washington Ave., 505-988-3030

#### Betterday Coffee

905 W. Alameda St., 505-555-1234

#### Bishop's Lodge Ranch Resort & Spa

1297 Bishops Lodge Rd., 505-983-6377

#### Café Café

500 Sandoval St., 505-466-1391

#### Casa Chimayó

409 W. Water St., 505-428-0391

#### ¡Chispa! at El Mesón

213 Washington Ave., 505-983-6756

#### Cowgirl BBQ

319 S. Guadalupe St., 505-982-2565

#### The Den at Coyote Café

132 W. Water St., 505-983-1615

#### Duel Brewing

1228 Parkway Dr., 505-474-5301

#### El Cañon at the Hilton

100 Sandoval St., 505-988-2811

#### Eldorado Hotel & Spa

309 W. San Francisco St., 505-988-4455

#### El Farol

808 Canyon Rd., 505-983-9912

#### El Paseo Bar & Grill

208 Galisteo St., 505-992-2848

#### Evangelo's

200 W. San Francisco St., 505-982-9014

#### High Mayhem Emerging Arts

2811 Siler Lane, 505-438-2047

#### Hotel Santa Fe

1501 Paseo de Peralta, 505-982-1200

#### Iconik Coffee Roasters

1600 Lena St., 505-428-0996

#### La Boca

72 W. Marcy St., 505-982-3433

#### La Casa Sena Cantina

125 E. Palace Ave., 505-988-9232

#### La Fiesta Lounge at La Fonda

100 E. San Francisco St., 505-982-5511

#### La Posada de Santa Fe Resort and Spa

330 E. Palace Ave., 505-986-0000

#### Lencis Performing Arts Center

211 W. San Francisco St., 505-988-1234

#### Lodge Lounge at The Lodge

at Santa Fe 750 N. St. Francis Dr., 505-992-5800

#### Low 'n' Slow Lowrider Bar

at Hotel Chimayó de Santa Fe 125 Washington Ave., 505-988-4900

#### The Matador

116 W. San Francisco St.

#### Mine Shaft Tavern

2846 N.M. 14, Madrid, 505-473-0743

#### Molly's Kitchen & Lounge

1611 Calle Lorca, 505-983-7577

#### Museum Hill Café

710 Camino Lejo, Milner Plaza, 505-984-8900

#### Music Room at Garrett's

Desert Inn 311 Old Santa Fe Trail, 505-982-1851

#### Palace Restaurant & Saloon

142 W. Palace Ave., 505-428-0690

#### The Pantry Restaurant

1820 Cerrillos Rd., 505-986-0022

#### Pranzo Italian Grill

540 Montezuma Ave., 505-984-2645

#### Santa Fe Community Convention Center

201 W. Marcy St., 505-955-6705

#### Santa Fe Sol Stage & Grill

37 Fire Place, solofsantafe.com

#### Second Street Brewery

1814 Second St., 505-982-3030

#### Second Street Brewery at the Railyard

1607 Paseo de Peralta, 505-989-3278

#### Sweetwater Harvest Kitchen

1512-B Pacheco St., 505-795-7383

#### Taberna La Boca

125 Lincoln Ave., 505-988-7102

#### Tiny's 1005 St. Francis Drive, Suite 117,

505-983-9817

#### The Underground at Evangelo's

200 W. San Francisco St.

#### Upper Crust Pizza

329 Old Santa Fe Trail, 505-982-0000

#### Vanessie

434 W. San Francisco St., 505-982-9966

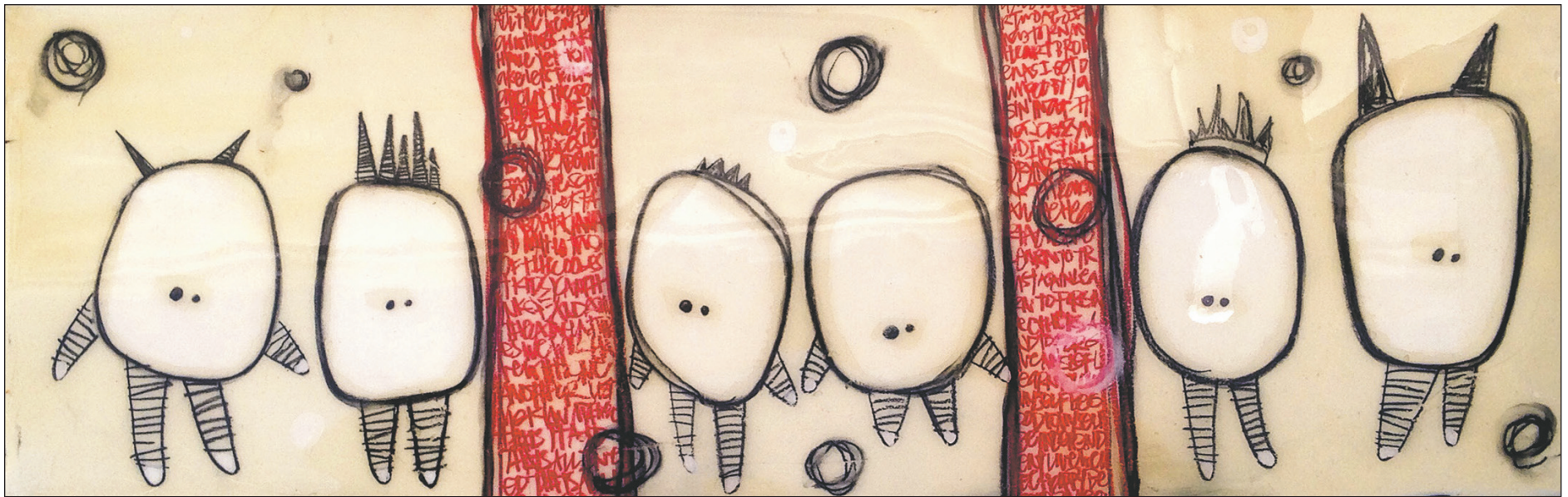
#### Warehouse 21

1614 Paseo de Peralta, 505-989-4423

#### Zia Dinner

326 S. Guadalupe St., 505-988-7008





Zane Bennett Contemporary Art, 435 S. Guadalupe St., shows work by Heidi Brandow.

### The Merry Wives of Windsor

Arden Shakespeare Festival presents the comedy, 1 p.m., James A. Littler Theater, New Mexico School for the Deaf, 1060 Cerrillos Rd., \$20, discounts available, 505-603-7479.

**Performance at The Screen** *Lost Illusions*, a ballet based on Balzac's novel, performed at Moscow's Bolshoi Theatre, 1:10 p.m., The Screen, 1600 St. Michael's Dr., \$20 in advance online at vendini.com and at the door, discounts available, 505-473-6084.

### BOOKS/TALKS

#### Santa Fe municipal elections

Journey Santa Fe hosts a conversation with Houston Johansen and Rick Lass on proposed amendments to the city charter, 11 a.m., Collected Works Bookstore, 202 Galisteo St., 505-988-4226.

### EVENTS

#### Life Drawing

Weekly figure-drawing class led by Cari Griffo, 11 a.m.-1 p.m., Duel Brewing, 1228 Parkway Dr., \$25 includes refreshments, 505-474-5301.

#### Railyard Artisan Market

Handmade goods and live music Sundays from 10 a.m.-4 p.m., Santa Fe Farmers Market Pavilion, 1607 Paseo de Peralta, no charge.

#### Santa Fe Jewish Film Festival

Lox and bagel nosh 11 a.m., encore screening of the 2010 documentary *Joe Papp in Five Acts*, 11:30 a.m., Center for Contemporary Arts Cinematheque, 1050 Old Pecos Trail, \$12 in advance, santfejff.org.

#### Trader Walt's Southwestern & International Marketplace

More than 100 vendor booths with antiques, folk and fine art, books, jewelry, and snacks, 9 a.m.-4 p.m., El Museo Cultural de Santa Fe, 555 Camino de la Familia, no charge.

### NIGHTLIFE

(See Page 50 for addresses)

#### Cowgirl BBQ

Santa Fe Revue, country, bluegrass, and R & B mash-up, noon-3 p.m., no cover.

#### Duel Brewing

Jazz guitarist Tommy Duran, 3-5 p.m., no cover.

#### El Farol

Pan-Latin chanteuse Nacha Mendez, 7-10 p.m., call for cover.

### La Posada de Santa Fe Resort and Spa

Wily Jim, Western swingabilly, 7-10 p.m., no cover.

**Mine Shaft Tavern** The Barbwires, soulful blues, 3-7 p.m.; Super Bowl deck party, 6:30 p.m., call for cover.

## 3 Monday

### IN CONCERT

#### Michael Kott and Laurianne Fiorentino

Cello and vocal recital, 7 p.m., Santa Fe Center for Spiritual Living, 505 Camino de los Marquez, \$10 and \$15, 505-983-5022 or 505-690-5907.

### BOOKS/TALKS

#### Santa Fe Botanical Garden Winter Lecture Series

*Downton Abby: Its Gardens and Landscapes*, by Michael Pulman, 2 p.m., Santa Fe Woman's Club, 1616 Old Pecos Trail, \$10 at the door, 505-471-9103.

#### Spectacular Recent Finds at Woodrow Ruin Complex: A Mimbres Site

Southwest Seminars lecture with Jakob William Sedig, 6 p.m., Hotel Santa Fe, 1501 Paseo de Peralta, \$12 at the door, 505-466-2775.

### EVENTS

#### Game of Thrones

Free screenings of the HBO series every Monday at 7 p.m. through March 24, Jean Cocteau Cinema, 418 Montezuma Ave., jeancocteaucinema.com.

### NIGHTLIFE

(See Page 50 for addresses)

#### Cowgirl BBQ

Cowgirl karaoke hosted by Michele Leidig, 8 p.m., no cover.

**Duel Brewing** Blue Monday with James T. Baker, Delta blues, 6-8 p.m., no cover.

#### El Farol

Tiho Dimitrov, R & B, 8 p.m., call for cover.

**La Casa Sena Cantina** Best of Broadway, piano and vocals, 6-10 p.m., no cover.

## 4 Tuesday

### EVENTS

**International folk dances** Weekly on Tuesdays, dance 8 p.m., lessons 7 p.m., Odd Fellows Hall, 1125 Cerrillos Rd., \$5 donation at the door, 505-501-5081 or 505-466-2920.

### NIGHTLIFE

(See Page 50 for addresses)

**¡Chispa! at El Mesón** Argentine Tango Milonga, 7:30-11 p.m., no cover.

**Cowgirl BBQ** Todd Tijerina Band, rock and blues, 8 p.m., no cover.

#### El Farol

Canyon Road Blues Jam, 8:30 p.m., no cover.

**Zia Diner** Weekly Santa Fe bluegrass jam, 6-8 p.m., no cover.

## 5 Wednesday

### BOOKS/TALKS

**Dharma talk** Presented by Zen practitioner and author Natalie Goldberg, 5:30 p.m., Upaya Zen Center, 1404 Cerro Gordo Rd., no charge, 505-986-8518.

**Ideas and Great Transformation in Post-Mao's China** A talk by professor He Li of Merrimack College, noon-1 p.m., School for Advanced Research, 660 Garcia St., no charge, 505-954-7203.

### OUTDOORS

**Winter hiking sessions** The City of Santa Fe Recreation Division offers local-trail hikes ranging from easy to moderate, 11 a.m.-1 p.m., \$20, preregister at Genoveva Chavez Community Center, 3221 Rodeo Rd., contact Michelle Rogers for details, 505-955-4047, visit chavezcenter.com.

### EVENTS

#### Telluride Mountainfilm Festival

Environmental-themed films, 7 p.m., the Lentic, 211 W. San Francisco St., \$15, 505-988-1234, ticketsantafe.org.

### NIGHTLIFE

(See Page 50 for addresses)

#### Cowgirl BBQ

Sioux City Kid, Americana and Delta blues, 8 p.m., no cover.

#### Duel Brewing

MC Joanna Colangelo serves up tunes and takes requests during Grateful Dead Night, 6-9 p.m., no cover.

#### El Farol

Nacha Mendez with Santastico, 8 p.m.-close, no cover.

#### ¡Chispa! at El Mesón

Flamenco guitarist Chuscales, 7-9 p.m., no cover.

### La Casa Sena Cantina

Best of Broadway, piano and vocals, 6-10 p.m., no cover.

#### La Fiesta Lounge at La Fonda

Bill Hearne Trio, classic country tunes, 7:30 p.m., no cover.

#### La Posada de Santa Fe Resort and Spa

Wily Jim, Western swingabilly, 7-10 p.m., no cover.

#### Palace Restaurant & Saloon

Guitarist Gary Gorence, acoustic rock and blues, 7:30 p.m., call for cover.

#### The Pantry Restaurant

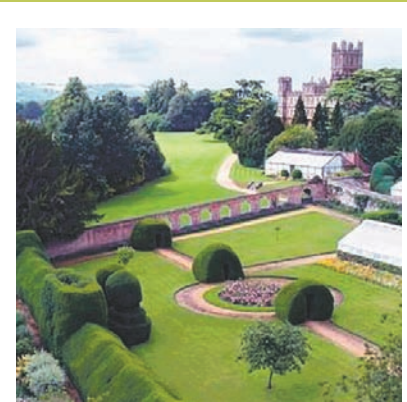
Gary Vigil, acoustic guitar and vocals, 5:30-8 p.m., no cover.

#### Tiny's

505 Electric-Blues Jam, with Nick Wimett and M.C. Clymer, 8 p.m., no cover.



## Talking Heads



### Downton Abby: Its Gardens and Landscapes

Join Michael Pulman at 2 p.m. Monday, Feb. 3, as he describes the spectacular grounds of Highclere Castle. A Santa Fe Botanical Garden Winter Lecture Series event. Held at the Santa Fe Woman's Club, 1616 Old Pecos Trail. \$10 at the door. Visit [sfbotanicalgarden.org](http://sfbotanicalgarden.org) or call 505-471-9103 for more information.



## 6 Thursday

### GALLERY/MUSEUM OPENINGS

#### Atrium Gallery

Marion Center for Photographic Arts, SFUA&D, 1600 St. Michael's Dr., 505-473-6341. *Kevin O'Connell: Everything Comes Broken*, through May 17; Monte del Sol student exhibit, through February; reception 5-7 p.m.

#### Commissioner's Gallery New Mexico

**State Land Office** 310 Old Santa Fe Trail, 505-827-5762. *One Tree, Many Roots*, works by Diana Stetson and Noël Chilton, reception 4-6 p.m.

### THEATER/DANCE

#### Benchwarmers 13 sneak peak

Festival of eight 15-minute playlets by local playwrights, Santa Fe Playhouse, 142 E. De Vargas St., \$10, 505-988-4262, santafeplayhouse.org, Thursday-Sunday through March 2.

#### The Jewel in the Manuscript

Rosemary Zibart's play about Fyodor Dostoevsky, 7:30 p.m., Warehouse 21, 1614 Paseo de Peralta, \$15 or two for \$20, students \$10, 505-989-4423, Thursday, Saturday, and Sunday performances through Feb. 16. (See story, Page 34)

### BOOKS/TALKS

#### Georgia O'Keeffe Museum exhibit

**lecture** Curator Theresa Papanikolas discusses *Georgia O'Keeffe and Ansel Adams: The Hawaii Pictures*, 6:30 p.m., St. Francis Auditorium, New Mexico Museum of Art, 107 W. Palace Ave., \$5, 505-946-1039.

#### Opera Unveiled

Desirée Mays introduces the Santa Fe Opera's 2014 season with stories and music selections, 1-3 p.m., St. John's United Methodist Church, 1200 Old Pecos Trail, \$10, 505-982-9274.

### NIGHTLIFE

(See Page 50 for addresses)

#### ¡Chispa! at El Mesón

Jazz pianist John Rangel and friends, 7-9 p.m., no cover.

#### Cowgirl BBQ

Drasticoustic, acoustic-rock jam, 8 p.m., no cover.

#### Duel Brewing

Local singer/songwriters Eryn Bent and Lisa Carmen, 7-10 p.m., no cover.

#### El Farol

Guitarras con Sabor, 8 p.m., call for cover.

#### La Casa Sena Cantina

Best of Broadway, piano and vocals, 6-10 p.m., no cover.

#### La Fiesta Lounge at La Fonda

Bill Hearne Trio, classic country tunes, 7:30 p.m., no cover.

#### La Posada de Santa Fe Resort and Spa

Pat Malone Trio, featuring Kanoa Kaluhiwa on saxophone, Asher Barreras on bass, and Malone on guitar, 6-9 p.m., call for cover.

#### Low 'n' Slow Lowrider Bar at Hotel

**Chimayó** Tenor guitarist and flutist Gerry Carthy, 9 p.m., no cover.

#### Palace Restaurant & Saloon

Thursday limelight karaoke, 10 p.m., no cover.

#### The Matador

DJ Inky Inc. spinning soul/punk/ska, 8:30 p.m., no cover.

#### Zia Diner

Trio Bijou, vintage jazz with Gemma DeRagon on violin and vocals, Andy Gabrys on guitar, and Andy Zadrozny on bass, 6:30-8:30 p.m., no cover.



Richard Levy Gallery, 514 Central Ave. S.W., Albuquerque, shows work by Gordon Parks (1912-2006)

## ► Elsewhere

### ALBUQUERQUE

#### Museums/Art Spaces

##### 516 Arts

516 Central Ave. S.W., 505-242-1445. *Heart of the City*, group show, 6-8 p.m. Saturday, Feb. 1, through May 3.

#### Albuquerque Museum of Art & History

2000 Mountain Rd. N.W., 505-243-7255. Open 9 a.m.-5 p.m. Tuesday-Sunday; adults \$4 (\$1 discount for NM residents); seniors \$2; children ages 4-12 \$1; 3 and under no charge; the first Wednesday of the month and 9 a.m.-1 p.m. Sundays no charge.

#### National Hispanic Cultural Center

1701 Fourth St. S.W., 505-604-6896. *En la Cocina With San Pascual*, works by New Mexico artists. Open 10 a.m.-5 p.m. Tuesday-Sunday, no charge.

#### Richard Levy Gallery

514 Central Ave. S.W., 505-766-9888. *Segregation Series*, work by photographer Gordon Parks (1912-2006); mixed media by Mickalene Thomas; reception 6-8 p.m. Saturday, Feb. 1, through March 1.

### Events/Performances

#### The Menu

Tricklock Company presents its staged production based on Jim Linnell's book of poetry, 10 p.m. Friday, 6 p.m. Saturday, Jan. 1-Feb. 1, Tricklock Performance Laboratory, 110 Gold Ave. S.W., no charge, reservations 505-414-3738.

#### Chatter Sunday

*Sensual and Serene*, flute, harp, and viola recital with Jesse Tatum, Lynn Gorman, and David Felberg, 10:30 a.m. Sunday, Feb. 2, a reading follows with author Betsy James, The Kosmos, 1715 Fifth St. N.W., \$15 at the door, discounts available, chatterchamber.org.

### MADRID

#### Johnsons of Madrid

2843 NM 14, 505-471-1054. *Preserve La Bajada Mesa*, group show in response to proposed mining operation; group show of works by Northern New Mexico artists; *Wearables and Wallables*, group textile show featuring Beth Wheeler; *People*, works by Mel Johnson and Cosmo Monkhouse; reception 3-5 p.m. Saturday, Feb. 1, through Feb. 25.

### TAOS

#### David Anthony Fine Art

132 Kit Carson Rd., 575-758-7113. *Exothermic Reactions*, photographs of pyrotechnic tableaux by David Mapes, through Feb. 28.

#### Millicent Rogers Museum

1504 Millicent Rogers Rd., 575-758-2462. *12th Annual Miniatures Show & Sale*, ticketed (\$20) opening reception 5:30-7:30 p.m. Friday, Jan. 31, through March 2. Open 10 a.m.-5 p.m. Tuesday-Sunday through March, NM residents \$5; nonresidents \$10; seniors \$8; students \$6; ages 6-16 \$2; Taos County residents no charge.

#### Taos Art Museum and Fechin House

227 Paseo del Pueblo Norte, 575-758-2690. *The Animal World of Eugenie Glaman*, etchings and paintings, through March 2. Open 10 a.m.-4 p.m. Tuesday through Sunday, no charge.

## ► People who need people

### Artists

#### Call for sculpture

One-inch-high sculptures sought for *The Royal Breadshow*; sculptures will be exhibited and then baked into breads; March 31 deadline; see [theroyalbreadshow.com](http://theroyalbreadshow.com) or [axleart.com](http://axleart.com) for submission guidelines.

### MasterWorks of New Mexico 2014

Open to all New Mexico artists; accepting miniatures, pastels, watercolors, and oils/acrylics; digital entries deadline Friday, Jan. 31; miniatures must be shipped by March 15 or hand-delivered by March 22; for prospectus and information visit [masterworksnm.org](http://masterworksnm.org).

### Santa Fe Society of Artists spring jury

New Mexico artisans are invited to apply for weekly Saturday outdoor art shows located downtown; jury held on Feb. 22; application forms available online at [santafesocietyofartists.com](http://santafesocietyofartists.com); 505-455-3496.

### Donations/Volunteers

#### Cerrillos Hills State Park volunteer training

Seeking weekend receptionists, park greeters, and help with serving refreshments during public programs; training held 10 a.m.-1 p.m. Saturday, March 8; call for reservations, 505-474-0196, Visitor's Center, 37 Main St., Cerrillos.

#### Fight Illiteracy

Literacy Volunteers of Santa Fe will train individuals willing to help adults learn to read, write, and speak English; details available online at [lvsf.org](http://lvsf.org), or call 505-428-1353.

#### Many Mothers

Assist new mothers and families, raise funds, plan events, become a board member, and more; requirements and details available online at [manymothers.org](http://manymothers.org); call 505-466-3715 for more information or to schedule an interview.

#### Santa Fe Humane Society and Animal Shelter

Dogs need individuals to take them on daily walks; all shifts available, call Katherine at 505-983-4309, Ext. 128.

#### Santa Fe Stories Project

The Santa Fe V.I.P. seeks material on the post-World War II era in Santa Fe; to submit stories or images, visit [santafestories.com](http://santafestories.com); submissions accepted through March.

#### St. Elizabeth Shelter

Help with meal preparation at residential facilities and emergency shelters; other duties also available; contact Rosario, 505-982-6611, Ext. 108, [volunteer@steshelter.org](mailto:volunteer@steshelter.org).

## ► Under 21

### UNDER 21

**Rock/punk concert** Hating Nate, HN-88, Almost a Lie, and On Believer, 7 p.m. Friday, Jan. 31, Warehouse 21, 1614 Paseo de Peralta, \$5 at the door, 505-989-4423.

## ► Pasa Kids

#### Flying Cow Gallery

Warehouse 21, 1614 Paseo de Peralta, 505-989-4423. Group show of works by Dragonfly Art Studio students (ages 5-14), reception 4-7 p.m. Friday, Jan. 31, through Feb. 11.

#### Santa Fe Children's Museum science exhibit

*Cultivate the Scientist in Every Child: The Philosophy of David and Frances Hawkins*, descriptions of the team's work in education and observations of children and teachers; also, hands-on activities for children ages 2-10, through Feb. 9. 1050 Old Pecos Trail, open 10 a.m.-5 p.m. Wednesday, Friday, Saturday, 10 a.m.-7 p.m. Thursday, noon-5 p.m. Sunday, \$7.50 admission, 505-989-8359.

#### Journey to China With Le Rossignal

Bring kids ages 3-5 for an introduction to opera through dance, song, and costumes, 9:30-11:30 a.m. Saturday, Feb. 1, First Presbyterian Church of Santa Fe, 208 Grant Ave., no charge, RSVP to [firstprescdc@gmail.com](mailto:firstprescdc@gmail.com). ◀



# In the wings



## MUSIC

### Albuquerque Baroque Players

Music of Lully, Rameau, and Couperin, featuring violinist Stephen Redfield, 7:30 p.m. Friday, Feb. 7, San Miguel Church, 401 Old Santa Fe Trail, \$18, discounts available, 505-400-9385, albuquerquebaroqueplayers.com.

### Piano and violin recital

Tim Schwarz and Daniel Weiser perform music of Copland, Amy Beach, and William Grant Still, 6:30 p.m. Friday, 7 p.m. Saturday, Feb. 7-8, Quail Run Clubhouse, 3101 Old Pecos Trail, \$30 in advance online at amicimusic.org, \$35 at the door, 770-490-9134.

### The Met Live in HD

Dvorak's *Rusalka*, 11 a.m. and 6 p.m. Saturday, Feb. 8, the Lensic, \$22-\$28, 505-988-1234, ticketssantafe.org.

### Serenata of Santa Fe

*Twists and Turns*, music of Brahms, Herrmann, and Tower, 3 p.m. Sunday, Feb. 9, Scottish Rite Center, 463 Paseo de Peralta, \$25, 505-988-1234, ticketssantafe.org.

### Zappa Plays Zappa

Guitarist Dweezil Zappa's band, 7:30 p.m. Wednesday, Feb. 12 (\$32-\$75); Dweezilla on the Road, Zappa's master class (\$75), precedes the concert at 3 p.m., Greer Garson Theatre, 1600 St. Michael's Dr., 505-988-1234, ticketssantafe.org.

### La Catrina Quartet

Violinists Daniel Vega-Albela and Roberta Aruda, violist Jorge Martínez, and cellist Javier Arias, with piano and flute, music of Brahms, Mozart, and Amy Beach, 7 p.m. Saturday, Feb. 15, Immaculate Heart of Mary Retreat and Conference Center Chapel, 50 Mount Carmel Rd., \$25, discounts available, 505-474-4513.

### Santa Fe Symphony: In Honor of Lincoln

Presentation of Copland's *Lincoln Portrait* with narration by N. Scott Momaday, and *Fanfare for the Common Man*, 4 p.m. Sunday, Feb. 16, lecture at 3 p.m., Lensic Performing Arts Center, 211 W. San Francisco St., \$20-\$70, 505-988-1234, ticketssantafe.org.

### McFish Trio

Cellist Erika Duke Kirkpatrick, violist Marlow Fisher, and harpsichordist Kathleen McIntosh, varied repertoire, 3 p.m. Sunday, Feb. 16, Santa Fe Woman's Club, 1616 Old Pecos Trail, \$5 at the door, 505-670-8273.

**Pixies** Alt-rock band, 7:30 p.m. Tuesday, Feb. 25, Albuquerque Convention Center, 401 Second St. N.W., \$39-\$58 in advance online at amconcerts.org or holdmyticket.com, 505-886-1251.

### Legends of the Celtic Harp

Acoustic trio, 7:30 p.m. Friday, Feb. 28, Gig Performance Space, 1808-H Second St., \$20 at the door, gigsantafe.com.

### Jonathan Wilson

Psychedelic-folk singer/songwriter and his band, 7:30 p.m. Friday, Feb. 28, the Lensic, \$12 in advance, 505-988-1234, ticketssantafe.org, \$15 at the door.

### David Russell

Classical guitarist, 7:30 p.m. Friday, March 7, Great Hall, Peterson Student Center, St. John's College, 1160 Camino de Cruz Blanca, \$40 at the door, 505-984-6000.

### New Mexico Bach Society

Easter Oratorio, 4 p.m. Sunday, March 9, Stieren Hall, 301 Opera Dr., \$30 and \$40, 505-474-4513, nmperformingartsociety.org.

**Greensky Bluegrass** Prog. bluegrass band, 7:30 p.m. Wednesday, March 12, Santa Fe Sol Stage & Grill, 37 Fire Place, \$15 in advance, \$20 at the door, 505-988-1234, ticketssantafe.org.

### Yacouba Sissoko

Kora player, 7:30 p.m. Friday, March 14, Gig Performance Space, 1808-H Second St., \$20 at the door, gigsantafe.com.

### Sharon Jones and the Dap-Kings

Soul and funk; Valerie June opens, 7:30 p.m. Tuesday, March 18, Lensic Performing Arts Center, 211 W. San Francisco St., \$34-\$54, 505-988-1234, ticketssantafe.org.

### Santa Fe Symphony

Featuring violinist Clara-Jumi Kang; music of Bruch, Rachmaninov, and Borodin, 4 p.m. Sunday, March 23, the Lensic, \$22-\$76, 505-988-1234, ticketssantafe.org.

**Sounds of Santa Fe 2** Local musicians' showcase, 7:30 p.m. Friday, March 28, Lensic Performing Arts Center, 211 W. San Francisco St., \$12, 505-988-1234, ticketssantafe.org.

### An Evening With Joyce DiDonato

Mezzo-soprano, 6:30 p.m. Monday, March 31, the Lensic, 211 W. San Francisco St., concert only \$25-\$95, 505-988-1234, ticketssantafe.org; premium seats and dinner \$325, tickets available through the Santa Fe Concert Association, 505-984-8759.

**Joshua Redman** Jazz saxophonist, 7 p.m. Friday, April 4, Outpost Performance Space, 210 Yale Blvd. S.E., Albuquerque, \$30, students \$25, holdmyticket.com.

### Neko Case

Singer/songwriter, with The Dodos, 7:30 p.m. Monday April 14, Lensic Performing Arts Center, 211 W. San Francisco St., \$34-\$44, 505-988-1234, ticketssantafe.org.

### The Dandy Warhols

Power-pop rockers, 7:30 p.m. Tuesday, April 29, Santa Fe Sol Stage & Grill, 37 Fire Place, \$27 in advance, 505-988-1234, ticketssantafe.org, \$35 at the door.

## THEATER/DANCE

**Colin Quinn** The stand-up comic shares his political views in *Unconstitutional*, 7 p.m. Friday, Feb. 7, Lensic Performing Arts Center, \$15-\$35, 505-988-1234, ticketssantafe.org.

### Tao Phoenix Rising

Contemporary dance and taiko drum troupe, 7:30 p.m. Saturday, Feb. 22, the Lensic, \$25-\$45, ticketssantafe.org, 505-988-1234.

### The Jewel Box Cabaret

Gender-bending musical comedy and burlesque series, featuring Guava Chiffon, 8:30 p.m. Saturday, Feb. 22, María Benítez Cabaret at The Lodge, 750 N. St. Francis Dr., \$10, VIP seating \$20, 505-428-7781.

**National Theatre Live in HD** *War Horse*, based on Michael Morpurgo's novel set in France during WWI, 7 p.m. Friday, Feb. 27, the Lensic, \$22, student discounts available, 505-988-1234, ticketssantafe.org.

## UPCOMING EVENTS

### Les Liaisons Dangereuses

Playwright Christopher Hampton's adaptation of the novel about seduction and revenge, 7 p.m. Friday and Saturday and 2 p.m. Sunday, March 7-16, Greer Garson Theatre, 1600 St. Michael's Dr., \$12-\$15, discounts available, ticketsantafe.org, 505-988-1234.

**The Other Place** Fusion Theatre Company presents Shar White's drama, 8 p.m. Friday, 2 and 8 p.m. Saturday, March 7-8, the Lensic, \$20-\$40, 505-988-1234, ticketssantafe.org.

**The Queen of Madison Avenue** A reading of Ron Bloomberg's new play, 7 p.m. Thursday, March 13, the Lensic, 211 W. San Francisco St., \$10, 505-988-1234, ticketssantafe.org.

**Aspen Santa Fe Ballet** Choreography by Nicolò Fonte, Cayetano Soto, and Norbert de la Cruz, 7:30 p.m. Friday and Saturday, March 21-22, the Lensic, \$25-\$72 in advance, 505-988-1234, ticketssantafe.org.

### Southwest Irish Theater Festival

Theaterwork presents four plays and a concert, March 21-30, James A. Little Theater, New Mexico School for the Deaf, 1060 Cerrillos Rd., reservations 505-471-1799.

### HaMapah/The Map

Dancer Adam McKinney's multimedia performance, 7 p.m. Saturday, 3 p.m. Sunday, March 22-23, The Dance Barns, 1140 Alto St., \$20, discounts available, 505-988-1234, ticketssantafe.org.

**The Guru of Chai** Jacob Rajan's one-man portrayal of modern India, 7:30 p.m. Tuesday, April 1, the Lensic, \$15-\$35, 505-988-1234, ticketssantafe.org.

**Luma** Experimental-light theater performance, 2 and 7 p.m. Sunday, April 6, the Lensic, 211 W. San Francisco St., \$15-\$35, discounts available, 505-988-1234, ticketssantafe.org.

### Spring Awakening

A musical based on Frank Wedekind's once-controversial play, 7 p.m. Friday and Saturday, April 25-May 3, 2 p.m. Sunday, May 4, Greer Garson Theatre, 1600 St. Michael's Dr., \$12 and \$15, 505-988-1234, ticketssantafe.org.

## HAPPENINGS

**Seventh Annual New Mexico Italian Film & Culture Festival** Showing the 2012 film *Shun Li and the Poet*, 4 p.m. Sunday, Feb. 9, proceeds benefit UNM Children's Hospital, The Screen, 1600 St. Michael's Dr., \$100 includes dinner at Osteria D'Assisi, 505-473-6494, thescreensf.com.

**At the Artists' Table** Valentine's Day dinner prepared by chef Michelle Roetzer and conversation with Roetzer and artist Susan Contreras, 6-9 p.m. Friday, Feb. 14, held in support of Partners in Education Foundation for Santa Fe Public Schools, Santa Fe School of Cooking, 125 N. Guadalupe St., \$175, couples \$300, 505-474-0240, eventbrite.com.

**Wayard Shamans: The Prehistory of an Idea** The School for Advanced Research presents a lecture by Silvia Tomášková on humanity's earliest expressions of art, religion, and creativity through shamanism, 6:30-7:30 p.m. Thursday, Feb. 20, New Mexico History Museum Auditorium, 113 Lincoln Ave., \$10, 505-950-7200.



Dance and taiko drum troupe Tao Phoenix Rising performs Feb. 22 at the Lensic.



## AT THE GALLERIES

### Ellsworth Gallery

215 E. Palace Ave., 505-989-7900. Illuminated sculptures by Ilan Ashkenazi, through Feb. 22.

**El Museo Cultural de Santa Fe** 555 Camino de la Familia, 505-992-0591. *La Blanca Ciudad: The White City*, contemporary works by artists of Arequipa, Peru, through March.

### Marigold Arts

424 Canyon Rd., 505-982-4142. Group show of works by gallery artists, through Thursday, Feb. 6.

### Peyton Wright Gallery

237 E. Palace Ave., 505-989-9888. *Art of Devotion*, historic art of the Americas, through March 9.

### Photo-eye Gallery

370-A Garcia St., 505-988-5159. *Photo Objects & Small Prints*, group show; *REDD*, jewelry designs by Rachele Thiewes and Julia M. Barelo, through Saturday, Feb. 1.

**Santa Fe Botanical Garden** 725 Camino Lejo, 505-471-9103. *Birds in the Garden*, installation by ceramicist Christy Hengst, through May.

### Santa Fe Community College Visual Arts Gallery

6401 Richards Ave., 505-428-1501. *Dos Pintores y Dos Senderos: Padre y Hijo*, recent work by Andrés Martínez and Adrian Martínez, through March 5.

### Santa Fe Community Gallery

201 W. Marcy St., 505-955-6705. *In/Visible Borders: New Mexico Photographers*, including works by Carlan Tapp, Patrick Nagatani, and Norman Mauskopf, through Feb. 21.

### Santa Fe Prep

1101 Camino de Cruz Blanca, 505-982-1829. Works by alumni, including Peter Sarkisian, Ted Larsen, and Eliot Fisher, through January.

**Scheinbaum & Russek** 812 Camino Acoma, 505-988-5116. *Santa Fe Legacy*, prints and photographs by Gustave Baumann, Gerald Cassidy, Louie Ewing, Laura Gilpin, Kate Krasin, Eliot Porter, and Todd Webb, through January.

### Sugarman-Peterson Gallery

130 W. Palace Ave., 505-982-0340. New multimedia work by Michael Protiva, through January.

### Tansey Contemporary

652 Canyon Rd., 505-995-8513. *Devocionales: Neo-Colonial Retablos From an Archetypal Perspective*, paintings by Patrick McGrath Muñoz, through January.

### Turner Carroll Gallery

725 Canyon Rd., 505-986-9800. New works by Rex Ray and Hung Liu, through March 15.

## LIBRARIES

### Beaumont and Nancy Newhall Library

Santa Fe University of Art & Design, 1600 St. Michael's Dr., 505-474-5052. Open by appointment.

### Catherine McElvain Library

School for Advanced Research, 660 Garcia St., 505-954-7205. Open Monday-Friday, call for hours.

### Chase Art History Library

Santa Fe University of Art & Design, 1600 St. Michael's Dr., 505-473-6569. Open Monday-Friday, call for hours.

### Faith and John Meem Library

St. John's College, 1160 Camino de Cruz Blanca, 505-984-6041. Visit [stjohnscollege.edu](http://stjohnscollege.edu) for hours of operation, \$40 fee to nonstudents and nonfaculty.



Min Kim Park, Lynn, in the New Mexico Museum of Art exhibit *Collecting Is Curiosity/Inquiry*, closing Sunday, Feb. 2.

### Fray Angélico Chávez History Library

Palace of the Governors, 120 Washington Ave., 505-476-5090. Open 1-5 p.m. Tuesday-Friday.

### Laboratory of Anthropology Library

Museum of Indian Arts & Culture, 505-476-1264. Open 1-5 p.m. Monday-Friday, by museum admission.

### New Mexico State Library

1209 Camino Carlos Rey, 505-476-9700. Upstairs (state and federal documents and books) open noon-4:30 p.m. Monday-Friday; downstairs (Southwest collection, archives, and records) open 9 a.m.-4:30 p.m. Monday-Friday.

### Quimby Memorial Library

Southwestern College, 3960 San Felipe Rd., 505-467-6825. Rare books and collections of metaphysical materials. Open Monday-Saturday, call for hours.

### Santa Fe Community College Library

6401 Richards Ave., 505-428-1352. Open Monday-Saturday, call for hours.

### Santa Fe Institute

1399 Hyde Park Rd., 505-984-8800. Open 1-5 p.m. Monday-Friday. Visit [santafe.edu/library](http://santafe.edu/library) for online catalog.

### Santa Fe Public Library Main Branch

145 Washington Ave., 505-955-6781. Open 10 a.m.-8 p.m. Monday-Thursday; 10 a.m.-6 p.m. Friday and Saturday; 1-5 p.m. Sunday

### Santa Fe Public Library, Oliver La Farge Branch

1730 Llano St., 505-955-4860. Open 10 a.m.-8 p.m. Monday-Wednesday, 10 a.m.-6 p.m. Thursday-Saturday. Closed Sunday.

### Santa Fe Public Library, Southside Branch

6599 Jaguar Dr., 505-955-2810. Open 10 a.m.-8 p.m. Monday-Thursday, 10 a.m.-6 p.m. Friday-Saturday. Closed Sunday.

### Supreme Court Law Library

237 Don Gaspar Ave., 505-827-4850. Online catalog available at [supremecourtlawlibrary.org](http://supremecourtlawlibrary.org). Open 8 a.m.-5 p.m. Monday-Friday.

## MUSEUMS & ART SPACES

### Center for Contemporary Arts

1050 Old Pecos Trail, 505-216-0672. *Icepop*, installation by Sandra Wang and Crockett Bodelson of the art collective Scuba, Muñoz Waxman Gallery ♦ *All the News That's Fit to Print*, group show, Spector-Ripps Project Space, both exhibits through March 30. Call for hours or visit [ccasantafe.org](http://ccasantafe.org).

### Georgia O'Keeffe Museum

217 Johnson St., 505-946-1039. Open 10 a.m.-5 p.m. Saturday-Thursday, 10 a.m.-7 p.m. Friday; \$12; seniors \$10; NM residents \$6; students 18 and over \$10; under 18 no charge; no charge for NM residents first Friday of each month.

### Museum of Contemporary Native Arts

108 Cathedral Place, 505-983-1666. *Articulations in Print*, group show, through July ♦ *Bon à Tirer*, prints from the permanent collection, through July ♦ *Native American Short Films*, continuous loop of five films from Sundance Institute's Native American and Indigenous Program. Open 10 a.m.-5 p.m.; noon-5 p.m. Sunday; closed Tuesday. Adults \$10; NM residents, seniors, and students \$5; 16 and under and NM residents with ID no charge on Sundays.

### Museum of International Folk Art

706 Camino Lejo, Museum Hill, 505-476-1200. *Tako Kichi: Kite Crazy in Japan*, exhibition of Japanese kites, through March ♦ *New World Cuisine: The Histories of Chocolate, Mate y Más* ♦ *Multiple Visions: A Common Bond*, international collection of toys and folk art ♦ *Brasil and Arte Popular*, pieces from the museum's Brazilian collection, through Aug. 10. Open 10 a.m.-5 p.m. Tuesday-Sunday.

NM residents \$6; nonresidents \$9; ages 16 and under no charge; students with ID \$1 discount; no charge for NM residents over 60 on Wednesdays; no charge for NM residents on Sundays; school groups no charge.

### Museum of Spanish Colonial Art

750 Camino Lejo, Museum Hill, 505-982-2226. *Filigree & Finery: The Art of Adornment in New Mexico*, through spring 2014 ♦ *Beltrán-Kropp Peruvian Art Collection*, exhibit of gift items, including a permanent gift of 60 art pieces and objects from the estate of Pedro Gerardo Beltrán Espantoso, through May 27 ♦ *San Ysidro/St. Isidore the Farmer*, bultos, retablos, straw appliqué, and paintings on tin ♦ *Recent Acquisitions*, colonial and 19th-century Mexican art, sculpture, and furniture; also, work by young Spanish Market artists ♦ *The Delgado Room*, late-colonial-period re-creation. Open 10 a.m.-5 p.m. Tuesday-Sunday. \$8; NM residents \$4; 16 and under no charge; NM residents no charge on Sundays.

### New Mexico History Museum/Palace of the Governors

113 Lincoln Ave., 505-476-5200. *Water Over Mountain*, Channing Huser's photographic installation ♦ *Cowboys Real and Imagined*, artifacts and photographs from the collection, through March 16 ♦ *Tall Tales of the Wild West: The Stories of Karl May*, photographs and ephemera in relation to the German author, through Feb. 9 ♦ *Santa Fe Found: Fragments of Time*, the archaeological and historical roots of Santa Fe. Open 10 a.m.-5 p.m. Tuesday-Sunday; 5-8 p.m. Fridays. NM residents \$6; nonresidents \$9; 16 and younger no charge; students with ID \$1 discount; school groups no charge; no charge on Wednesdays for NM residents over 60; NM residents no charge on Sundays; free admission 5-8 p.m. Fridays.

### New Mexico Museum of Art

107 W. Palace Ave., 505-476-5072. *Renaissance to Goya: Prints and Drawings from Spain*, through March 9 ♦ *Collecting Is Curiosity/Inquiry*, through Sunday, Feb. 2 ♦ *A Life in Pictures: Four Photography Collections*, through Sunday, Feb. 2 ♦ *50 Works for 50 States: New Mexico*, through April 13 ♦ *It's About Time: 14,000 Years of Art in New Mexico*, through January. Open 10 a.m.-5 p.m. Tuesday-Sunday; 5-8 p.m. Fridays. NM residents \$6; nonresidents \$9; 16 and younger no charge; school groups no charge; NM residents over 60 no charge on Wednesdays; NM residents free on Sundays.

### Pablita Velarde Museum of Indian Women in the Arts

213 Cathedral Place, 505-988-8900. *Gathering of Dolls: A History of Native Dolls*, through April 27. Open 10 a.m.-5 p.m. Tuesday-Sunday. \$10 admission.

### Poeh Museum

Poeh Museum, 78 Cities of Gold Rd., 505-455-3334. *Doing Being Sharing Laughing*, group show, through January. Open 8 a.m.-5 p.m. Monday-Friday; 9 a.m.-4 p.m. Saturday; donations accepted.

### SITE Santa Fe

1606 Paseo de Peralta, 505-989-1199. Open Thursday and Saturday 10 a.m.-5 p.m., Friday 10 a.m.-7 p.m., and Sunday noon-5 p.m. \$10; seniors and students \$5; no charge 10 a.m.-noon Saturday; no charge Friday.

### Wheelwright Museum of the American Indian

704 Camino Lejo, Museum Hill, 505-982-4636. *The Durango Collection: Native American Weaving in the Southwest, 1860-1880*, through April 13. Open 10 a.m.-5 p.m. daily; donations accepted.



# EXHIBITIONISM

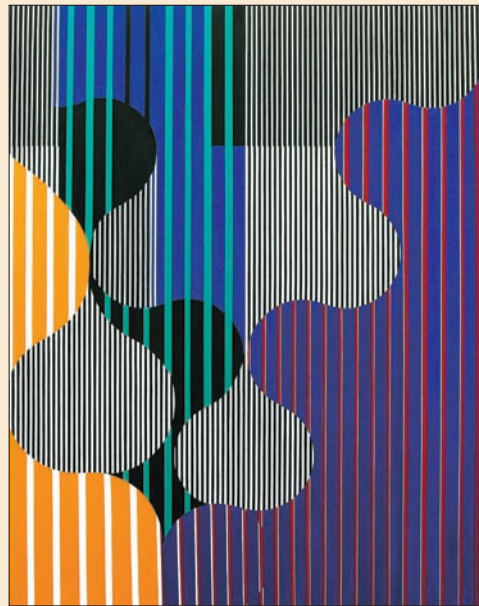
A peek at what's showing around town



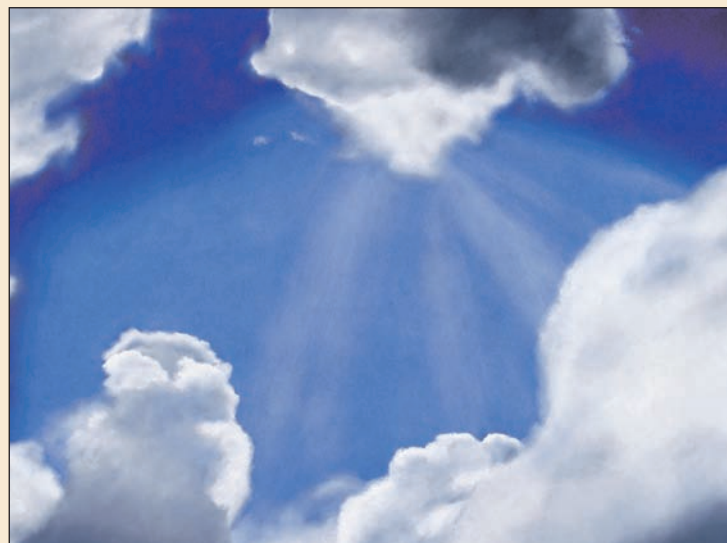
**Pedro Surroca: *Willowed Wisp*, 2013, oil on linen.** *Now and Then* at LewAllen Gallery (1613 Paseo de Peralta, in the Railyard) includes work by modern artists including Jean Charlot (1898-1979), Karl Nolde (1902-1994), and Alexander Calder (1898-1976) and contemporary artists Tom Palmore and Woody Gwyn, among others. The exhibit runs through Feb. 23. Call 505-988-3250.



**Marina Brownlow: *Untitled 3*, 2013, monprint.** Vivo Contemporary (725 Canyon Road) presents *Giving Voice to Image 2*, which pairs visual works by 12 gallery artists with poems by 12 New Mexico writers. The show opens on Friday, Jan. 31, with a 5 p.m. reception and a poetry reading with Donald Levering, Julia Deisler, Mary McGinnis, and others. Artists include George Duncan, Ilse Bolle, and Marina Brownlow. A second reception takes place on Friday, Feb. 7, at 5 p.m. with readings by Lauren Camp, Shebana Coelho, and Miriam Sagan, among others. The readings are free to the public. Call 505-982-1320.



**Oli Sihvonen: *Untitled (003)*, 1991, oil on canvas.** David Richard Gallery (544 S. Guadalupe St.) presents *Oli Sihvonen: In Motion*, an exhibition of vibrant and rhythmic abstract paintings. Sihvonen (1921-1991) was known for using reductive forms and repetition. The gallery's selection includes works Sihvonen made from 1988 to 1991. There is an opening reception at 5 p.m. on Friday, Jan. 31. The gallery hosts a free panel discussion about Sihvonen's work with gallery co-director David Eichholtz and artists Lilly Fenichel and Allan Graham on Saturday, Feb. 1, at 2 p.m. Call 505-983-9555.



**Kathy Beekman: *The Coming Light*, 2013, pastel on paper.** "Clouds stir up emotion with their constant shifts in light and shadow, their moving forms and color changes," writes artist Kathy Beekman. "What I like most about them is this ephemerality." *Clouds*, an exhibition of her pastel cloudscapes, is on view at Canyon Road Contemporary (403 Canyon Road) through Feb. 9. Call 505-983-0433.



**Sonja Alhäuser: *Flying Feast (detail)*, 2012, butter, marzipan, other foods, and miniature watercolors.** *Feast: Radical Hospitality in Contemporary Art* traces the history of artist-orchestrated meals from the early 20th century to the present and explores the political, commercial, and social structures surrounding the experience of sharing food. The exhibit, at SITE Santa Fe (1606 Paseo de Peralta), includes *The Royal Breadshow*, the winning project from last autumn's Spread event hosted by SITE. *Feast* opens with a 5:30 p.m. reception on Friday, Jan. 31. For information on related events throughout the run of the show, visit [www.sitesantafe.org](http://www.sitesantafe.org) or call 505-989-1199.