

PASA WEEK

ARTS AND ENTERTAINMENT CALENDAR July 11-17, 2014

CALENDAR LISTING GUIDELINES

- To list an event in Pasa Week, send an email or press release to pasa@sfnewmexican.com or pambeach@sfnewmexican.com.
- Send material no less than two weeks prior to the desired publication date.
- For each event, provide the following information: time, day, date, venue, venue address, ticket prices, web address, phone number, brief description of event (15 to 20 words).
- All submissions are welcome. However, events are included in Pasa Week as space allows. There is no charge for listings.
- To add your event to *The New Mexican* online calendar, visit santafenewmexican.com, and click on the Calendar tab.
- Return of photos and other materials cannot be guaranteed.
- *Pasatiempo* reserves the right to publish received information and photographs on *The New Mexican* website.
- For further information contact Pamela Beach, pambeach@sfnewmexican.com, 202 E. Marcy St., Santa Fe, NM 87501, phone: 505-986-3019, fax: 505-820-0803.

CALENDAR COMPILED BY PAMELA BEACH

FRIDAY 7/11

Gallery & Museum Openings

ART Santa Fe 2014

Santa Fe Community Convention Center, 201 W. Marcy St.

Contemporary art fair with international, national, and local exhibitors, 11 a.m.-6 p.m., \$10 in advance and at the door, 505-988-1234, ticketsantafe.org, runs through Sunday. (See story, Page 26)

Back Street Bistro

513 Camino de los Marquez, 505-982-3500
Vivid Summer, paintings by Janet Bothne, reception 5:30-7:30 p.m., through Sept. 6.

Bill Hester Fine Art

621 Canyon Rd., 505-660-5966
Rio Grande Gorge Series, paintings by Margaretta Caesar, reception 5-7 p.m., through July.

Canyon Road Contemporary

403 Canyon Rd., 505-983-0433
The Barn as a Portrait, pastels by Kathy Beekman, reception 5-7 p.m., through Aug. 10.

Cloud 5 Project

1805 Second St., 505-577-0360, cloud5project.com
Lucent, group show of multimedia works, reception 7-11 p.m., limited hours Fridays-Sundays and by appointment through Aug. 10.

Eggman & Walrus Art Emporium

130 W. Palace Ave., second floor, 505-660-0048
Cracking the Egg, group show, reception 5-9 p.m., through Aug. 10.

Fogelson Library Fine Art Gallery — Santa Fe University of Art & Design

1600 St. Michael's Dr., 505-473-6569
Water Spirits Walking on the Land, paintings, photographs, and an installation by Cate Moses, reception 5-7 p.m., through Aug. 20.

Gallery 901

901 Canyon Rd., 559-304-7264
Grand opening celebration with works by gallery artists, 6-9 p.m.

Marigold Arts

424 Canyon Rd., 505-982-4142
New watercolors by Robert Highsmith, reception 5-7 p.m., through Aug. 28.

Mark White Fine Art

414 Canyon Rd., 505-982-2073
Brainstorm, works by painter Javier López Barbosa and sculptor J.D. Hansen, reception 5-8 p.m., through Aug. 25.

New Concept Gallery

610 Canyon Rd., 505-795-7570
Sailing to Byzantium, pigment prints by Roger Arvid Anderson, reception 5-7 p.m., through July 28.



Las Chivas Coffee Gallery shows works by photographer Jack Arnold, Agora Shopping Center, 7 Avenida Vista Grande, Eldorado.

Patina Gallery

131 W. Palace Ave., 505-986-3432
Shape Shifter, paintings by David Solomon, reception 5-7:30 p.m., through Aug. 24. (See story, Page 32)

Phil Space

1410 Second St., 505-983-7945
In the Realm of Surrealism, mixed-media work (1969 to 2014) by Dana Newmann, reception 5-8 p.m., through Aug. 8. (See story, Page 34)

Red Dot Gallery

826 Canyon Rd., 505-820-7338
Annual Summer Art Exhibition, group show, reception 4:30-7 p.m., through Aug. 14.

Richard Long Fine Art

715 Canyon Rd., 505-913-9762
Body Molds: Goose Bumps, Freckles & Veins, sculpture by the gallerist, reception 5-7 p.m., through Aug. 30.

Sage Creek Gallery

421 Canyon Rd., 505-988-3444
Seasons of Beauty, figurative paintings by Bryce Cameron Liston, reception 5-7 p.m., through July.

Santa Fe Collective Pop-Up Gallery

101 W. Marcy St.
Group show of contemporary works, 11 a.m.-7 p.m. today and Saturday.

Santa Fe Time Bank Gallery

1219 Luisa St., Suite 1
Faces of the Santa Fe Time Bank: Self Portraits, reception 5-7 p.m.

Turner Carroll Gallery

725 Canyon Rd., 505-986-9800.
Biomorphed, works by Rex Ray, Shawn Smith, and Josh Garber, reception 5-7 p.m., through July 27.

Waxlander Gallery

622 Canyon Rd., 505-984-2202
Wild for Color!, paintings by Andrée Hudson, reception 5-8 p.m., through July 21.

Winterowd Fine Art

701 Canyon Rd., 505-992-8878
Tenth anniversary celebration and group show, reception 5-7 p.m., through July.

Opera

Carmen

Santa Fe Opera, 301 Opera Dr., 505-986-5900
In this Stephen Lawless production, Bizet's tragedy unrolls in the U.S.-Mexican borderlands a half century ago, with black-and-white film integrating with live stage action to enhance the period feel. Daniela Mack is Carmen (until Ana María Martínez assumes the role beginning July 28), Joyce El-Khoury sings Micaëla, and Roberto De Biasio portrays Don José. 8:30 p.m., tickets begin at \$32, standing room \$15.

Classical Music

Sibelius Academy concert

St. Francis Auditorium, New Mexico Museum of Art, 107 W. Palace Ave.
Voice and instrumental students perform, led by composer Magnus Lindberg and soprano Barbara Hannigan, 1 p.m., no charge, wisc-amh.org.

TGIF piano recital

First Presbyterian Church of Santa Fe, 208 Grant Ave., 505-982-8544, Ext. 16.
Juanita Madland plays music of Mozart, Schubert, and Chopin, 5:30-6 p.m., donations welcome.

In Concert

American Jem

La Tienda Performance Space, 7 Caliente Rd., Eldorado
Dance to the music of acoustic Americana trio, Jay Cawley, Ellie Dendahl, and Michael Umphrey, guitars and vocals, 6 p.m., americanjem.com, \$10 at the door.

In the Mood: Artists and musicians in collaboration

Vivo Contemporary, 725 Canyon Rd., 505-982-1320
Meet-and-greet with live music 5-7 p.m. Fridays through Aug. 29, tonight's performer: Michael Handler, harmonica/guitar, no charge.

Krishna Das & The Kirtan Wallah Tour

Greer Garson Theatre, SFUA&D, 1600 St. Michael's Dr. 7 p.m., \$36.50, \$45 at the door, 505-988-1234, ticketsantafe.org, encore performance.

Theater/Dance

Aspen Santa Fe Ballet: Mixed Repertory

The Lensic
Square None by Norbert De la Cruz III; *Return to a Strange Land*, by Jiri Kylián; *The Heart(s)pace*, by Nicolo Fonte, 8 p.m., \$25-\$72, 505-988-1234, ticketsantafe.org, Saturday encore.

Gala opening: Good People

Santa Fe Playhouse, 142 E. De Vargas St., 505-988-4262
Ironweed Productions presents David Lindsay-Abaire's drama, gala celebration 6:30 p.m., curtain 7:30 p.m., \$25, runs Thursdays-Sundays, through July 27.

Books/Talks

New Mexico Museum of Art: photography gallery talk

107 W. Palace Ave., 505-476-5068
Santa Fe photographer Richard Baron discusses his series, *Still Lives, New Mexico*, focusing on anonymous grave sites, in conjunction with the exhibit *Grounded*, 5:30-6:30 p.m., no charge.

Events

Backyard Astronomy

Santa Fe Community College Planetarium, 1401 Richards Ave., 505-428-1744
A live presentation and an outdoor viewing of the night sky, 8-9 p.m., \$5 at the door at 7:30 p.m., discounts available.



7/12

Santa Fe International Folk Art Market July 12-13

Santa Fe Opera Backstage Tours

Santa Fe Opera, 301 Opera Dr., 505-986-5900
Behind-the-scenes tours including production and front-of-house areas are offered Mondays-Saturdays through Aug. 22, 9 a.m., \$10; seniors \$8; no charge for ages 22 and under.

Nightlife

(See addresses to the right)

Café Café

Trio Los Primos, 6 p.m., no cover.

Cowgirl BBQ

Country singer/songwriter Bill Hearne, 5-7:30 p.m.; Jay Boy Adams & Zenobia, with Mister Sister, R & B, 8:30 p.m., no cover.

¡Chispa! at El Mesón

Three Faces of Jazz, with guest guitarist Tony Cesarano, 7:30-10:30 p.m., no cover.

Duel Brewing

Americana band Boris & The Salt Licks, 8-11 p.m., no cover.

El Farol

J.J. and the Hooligans, rock, 9 p.m., call for cover.

La Fiesta Lounge at La Fonda

Cathy Faber's Swingin' Country Band, 8 p.m.-close, no cover.

La Posada de Santa Fe Resort and Spa

Nacha Mendez Quartet, 6:30 p.m., no cover.

Palace Restaurant & Saloon

Digital Storm Riders & Friends, 10 p.m., no cover.

Pranzo Italian Grill

Pianist David Geist, cabaret, 6-9 p.m., call for cover.

Second Street Brewery

Blugrass band Acadian Drifters, 6-9 p.m., no cover.

Second Street Brewery at the Railyard

Gypsy-jazz ensemble Swing Soleil, 7-10 p.m., no cover.

Swiss Bakery Pastries and Bistro

Troubadour Gerry Carthy, on the patio, 7-10 p.m., no cover.

Tiny's

Guitarist Chris Abeyta, 5:30-8:30 p.m.; Sean Healen Band, rock, 8:30 p.m.-close; no cover.

Vanessie

Pianists Doug Montgomery (6-8 p.m.) and Bob Finnie (8-11 p.m.), call for cover.

SATURDAY 7/12

Gallery & Museum Openings

Allen Houser Gallery

125 Lincoln Ave., 505-982-4705

Emotions: The Human Condition, sculpture by Nour Kuri and Phillip M. Haozous, reception 6-8 p.m., through Aug. 19.

ART Santa Fe 2014

Santa Fe Community Convention Center, 201 W. Marcy St.

Contemporary art fair with international, works by international, national, and local exhibitors, 11 a.m.-6 p.m., \$10 in advance and at the door, 505-988-1234, ticketssantafe.org, runs through Sunday. (See story, Page 26)

Gallery Walk-About 2014

Casa Nova, 530 S. Guadalupe St., 505-983-8558. *Mali Chic*, group show of textiles, jewelry, and home décor, 9:30 a.m.

John Ruddy, 129 W. San Francisco St., second floor, 505-989-9903. *Time Warp: Recycled Textiles From Japan*, 10:45-11:15 a.m.

Taylor A. Dale Fine Tribal Art, 129 W. San Francisco St., second floor, 505-989-9903. *The Art of New Guinea*, featuring works from the Thomas-Rosen collection, 11:15-11:45 a.m.

Santa Fe Weaving Gallery, 124½ Galisteo St., 505-982-1737. *The Power of Trend and Color 2015*, pictorial analysis of 2015 international fashion catwalks by Barbara Arlen, 12:45 p.m.

Gebert Contemporary

558 Canyon Rd., 505-992-1100

Without Gravity, paintings by Lawrence Fodor, reception 2-4 p.m., through Aug. 9.

Santa Fe Collective Pop-Up Gallery

101 W. Marcy St.

Group show of contemporary works, 11 a.m.-7 p.m.

Opera

Fidelio

Santa Fe Opera, 301 Opera Dr., 505-986-5900
Soprano Alex Penda sings Leonore and tenor Paul Groves portrays Florestan in Stephen Wadsworth's production of Beethoven's drama; opening at 8:30 p.m., tickets begin at \$32, standing room \$15. (See story, Page 18)

In Concert

Santa Fe Bandstand

The Plaza

Salsa and timba quartet En-Joy, 6-7 p.m.; Latin-rhythm ensemble Nosotros, 7:15-8:45 p.m.; visit santafebandstand.org for the summer series schedule, no charge.

Theater/Dance

All for the Love of Dance 2

James A. Little Theater, New Mexico School for the Deaf, 1060 Cerrillos Rd.

Dance company including break dancers, aerial artists, and African dances, noon and 7:30 p.m., \$15, ages 11 and under \$10, proceeds benefit Teen Shelters of Santa Fe, tickets available in advance at Dance Space Santa Fe, 3208 Richards Lane, and at the box office.

Aspen Santa Fe Ballet: Mixed Repertory

The Lencis

Square None by Norbert de la Cruz III; *Return to a Strange Land*, by Jiri Kylián; *The Heart(s)pace*, by Nicolo Fonte, 8 p.m., \$25-\$72, 505-988-1234, ticketssantafe.org.

Good People

Santa Fe Playhouse, 142 E. De Vargas St., 505-988-4262

Ironweed Productions presents David Lindsay-Abaire's drama, 7:30 p.m., \$20, discounts available, runs Thursdays-Sundays, through July 27.

Wassa Wassa African Dance & Drum Festival benefit performance

Railyard Performance Center, 1611 Paseo de Peralta Soriba Fofana & Alhassane Camara, traditional music and dance; Moussa Kourouma & Ousmane Sylla, circus acrobatics, 8 p.m., \$10 donation at the door, soribafofana.com.

Books/Talks

Art Santa Fe: keynote speaker James Meyer

St. Francis Auditorium, New Mexico Museum of Art, 107 W. Palace Ave.

Children of the Sixties, a lecture by James Meyer, National Gallery of Art associate curator of modern art, 6:30 p.m., \$10 in advance, 505-988-1234, ticketssantafe.org. (See story, Page 30)

Books at the Market: Mark Nelson

Santa Fe Farmers Market Pavilion, 1607 Paseo de Peralta

The ecoengineer and author discusses *The Wastewater Gardener: Preserving the Planet One Flush at a Time*, 9 a.m.-noon, call Collected Works Bookstore for details, 505-988-4226.

Scott Mastro

Op. Cit. Books, 500 Montezuma Ave., Sanbusco Center, 505-428-0321

The author reads from and signs copies of *Blood Money: Tales From Two Continents*, 4 p.m.

Events

Contra dance

Odd Fellows Hall, 1125 Cerrillos Rd.

New England folk dance with music by the Adobe Brothers, beginner classes 7 p.m., dance 7:30 p.m., \$9, students, \$5, 505-820-3535.

Santa Fe Greek Festival

Pavilion Room, Eldorado Hotel & Spa, 309 W. San Francisco St.

Food, music, dancing, and beer and wine; 11 a.m.-9 p.m. today and Sunday, \$3, ages 12 and under no charge.

Check with venues for updates and special events

CLUBS, ROOMS, VENUES

317 Aztec
317 Aztec St., 505-820-0150

Agoyo Lounge
at the Inn on the Alameda
303 E. Alameda St., 505-984-2121

Anasazi Restaurant & Bar
113 Washington Ave., 505-988-3030

Betterday Coffee
905 W. Alameda St., 505-555-1234

Bishop's Lodge Ranch Resort & Spa
1297 Bishops Lodge Rd., 505-983-6377

Burro Alley Café
207 W. San Francisco St., 505-982-0601

Café Café
500 Sandoval St., 505-466-1391

¡Chispa! at El Mesón
213 Washington Ave., 505-983-6756

Cowgirl BBQ
319 S. Guadalupe St., 505-982-2565

The Den at Coyote Café
132 W. Water St., 505-983-1615

Duel Brewing
1228 Parkway Dr., 505-474-5301

El Cañon at the Hilton
100 Sandoval St., 505-988-2811

Eldorado Hotel & Spa
309 W. San Francisco St., 505-988-4455

El Farol
808 Canyon Rd., 505-983-9912

El Paseo Bar & Grill
208 Galisteo St., 505-992-2848

Evangelo's
200 W. San Francisco St., 505-982-9014

High Mayhem Emerging Arts
2811 Siler Lane, 505-438-2047

Hotel Santa Fe
1501 Paseo de Peralta, 505-982-1200

Iconik Coffee Roasters
1600 Lena St., 505-428-0996

Jean Cocteau Cinema
418 Montezuma Ave., 505-466-5528

Junction
530 S. Guadalupe St., 505-988-7222

La Boca
72 W. Marcy St., 505-982-3433

La Casa Sena Cantina
25 E. Palace Ave., 505-988-9232

La Fiesta Lounge at La Fonda
100 E. San Francisco St., 505-982-5511

La Posada de Santa Fe Resort and Spa
330 E. Palace Ave., 505-986-0000

Lencis Performing Arts Center
211 W. San Francisco St., 505-988-1234

Lodge Lounge
at The Lodge at Santa Fe
750 N. St. Francis Dr., 505-992-5800

Low 'n' Slow Lowrider Bar
at Hotel Chimayó de Santa Fe
125 Washington Ave., 505-988-4900

The Matador
116 W. San Francisco St.

Mine Shaft Tavern
2846 NM 14, Madrid, 505-473-0743

Museum Hill Café
710 Camino Lejo, Milner Plaza,
505-984-8900

Music Room at Garrett's Desert Inn
311 Old Santa Fe Trail, 505-982-1851

Omira Bar & Grill
1005 St. Francis Dr., 505-780-5483

Palace Restaurant & Saloon
142 W. Palace Ave., 505-428-0690

Pranzo Italian Grill
540 Montezuma Ave., 505-984-2645

Santa Fe Community
Convention Center
201 W. Marcy St., 505-955-6705

Santa Fe Sol Stage & Grill
37 Fire Place, solofsantafe.com

Second Street Brewery
1814 Second St., 505-982-3030

Second Street Brewery at the Railyard
1607 Paseo de Peralta, 505-989-3278

Shadeh Buffalo Thunder
Resort & Casino
Pojoaque Pueblo, U.S. 84/285,
505-455-5555

Sweetwater Harvest Kitchen
1512-B Pacheco St., 505-795-7383

Swiss Bakery Pastries and Bistro
401 S. Guadalupe St., 505-988-5500

Taberna La Boca
125 Lincoln Ave., 505-988-7102

Tiny's
1005 St. Francis Drive, Suite 117, 505-983-9817

The Underground at Evangelo's
200 W. San Francisco St.

Upper Crust Pizza
329 Old Santa Fe Trail, 505-982-0000

Vanessie
434 W. San Francisco St., 505-982-9966

Veterans of Foreign Wars
370 Montezuma Ave., 505-984-2691

Warehouse 21
1614 Paseo de Peralta, 505-989-4423

Zia Dinner
326 S. Guadalupe St., 505-988-7008



516 Arts shows the video *Ay Papi*, by Jessica Pizaña Roberts, in the group show *Digital Latin America*, 516 Central Ave. S.W., Albuquerque.

Santa Fe International Folk Art Market

Museum Hill
More than 150 folk artists from more than 50 countries; 9 a.m.-5 p.m. today and Sunday, \$15 in advance at holdmyticket.com; \$20 day of event; ages 16 and under no charge; 505-992-7600, folkartmarket.org.

Santa Fe Opera Backstage Tours

Santa Fe Opera, 301 Opera Dr., 505-986-5900
Behind-the-scenes tours including production and front-of-house areas are offered Mondays-Saturdays through Aug. 22, Saturday short program 8:30 a.m., tour 9 a.m., no charge on Saturdays.

Young Natives Arts & Crafts Show

Palace of the Governors Courtyard, enter through the blue gate on Lincoln Ave., 505-476-5200
Works by the children and grandchildren of the Palace of the Governors' portal artists, 9 a.m.-3 p.m. today and Saturday, no charge, 505-476-5200.



7/12

Santa Fe Greek Festival
July 12-13

Nightlife

(See Page 69 for addresses)

Café Café

Guitarist Ramon Bermudez, 6:30 p.m., no cover.

¡Chispa! at El Mesón

Jon Gagan Quartet, jazz riffs, 7:30-10:30 p.m., no cover.

Cowgirl BBQ

Acoustic-soul singer/songwriter Stacey Joy, 2-5 p.m.; Electro-marimba-trance band Jaka, 8:30 p.m.-close; no cover.

Del Charro

Mariachi Teotihuacan, with Stephen Montoya, Jaime Martinez, and Daniel Martinez, 2-9 p.m., no cover.

Duel Brewing

Santa Fe Revue, psychedelic rock, 8 p.m., no cover.

El Farol

John Carey, blues/Americana, 9 p.m.-close, call for cover.

La Fiesta Lounge at La Fonda

Cathy Faber's Swingin' Country Band, 8 p.m.-close, no cover.

La Posada de Santa Fe Resort and Spa

Pat Malone Jazz Trio, 6-9 p.m., no cover.

Palace Restaurant and Saloon

Half Broke Horses, country-western band, on the patio, 2 p.m., no cover; Vanilla Pop, '80s-infused lounge duo, 10 p.m.; call for cover.

Pranzo Italian Grill

Pianist Todd Lowry and vocalist Kari Simmons, 6-9 p.m., call for cover.

Second Street Brewery

Folk singer-songwriter Steve Guthrie, 6-9 p.m., no cover.

Second Street Brewery

Double bill: banjo-driven roots-rock duo Todd & The Fox and Austin-based jazz/blues band Love Leighs, 6 p.m., no cover.

Sweetwater Harvest Kitchen

John Serkin on Hawaiian slack-key guitar, 6 p.m., no cover.

Swiss Bakery Pastries and Bistro

Jazz pianist Robin Holloway & Friends, 7:30 p.m.-close, no cover.

Tiny's

Showcase karaoke with Nanci and Cyndy, 8:30 p.m.-close, no cover.

Vanessie

Pianist Doug Montgomery, 6:30 p.m.-close, call for cover.

SUNDAY 7/13

Gallery & Museum Openings

ART Santa Fe 2014

Santa Fe Community Convention Center, 201 W. Marcy St.

Contemporary art fair with international, national, and local exhibitors, 11 am.-6 p.m., \$10 in advance and at the door, 505-988-1234, ticketssantafe.org. (See story, Page 26)

Las Chivas Coffee Gallery

Agora Shopping Center, 7 Avenida Vista Grande, Suite B-7, Eldorado, 505-466-1010
Where I Find Myself, landscape photographs by Jack Arnold, reception 1-3 p.m., through Aug. 2.

In Concert

Bonnie "Prince" Billy

Railyard Plaza, 1607 Paseo de Peralta, Folk-rock singer/songwriter, 7 p.m., no charge, heathconcerts.org.

Theater/Dance

Flamenco's Next Generation

Lodge at Santa Fe, 750 N. St. Francis Dr.
Flamenco group from the María Benítez Institute for Spanish Arts, 2 p.m. Sundays, beginning today through Aug. 24, institutesspanisharts.org.

Good People

Santa Fe Playhouse, 142 E. De Vargas St., 505-988-4262
Ironweed Productions presents David Lindsay-Abaire's drama, 4 p.m., \$20, discounts available, runs Thursdays-Sundays through July 27.

Welcome to Arroyo's

Teatro Paraguas Studio, 3205 Calle Marie, 505-424-1601
A staged reading of the play by Kristoffer Diaz, directed by Roxanne Tapia, no charge, donations accepted, teatroparaguas.org.

Books/Talks

Journey Santa Fe presents

Collected Works Bookstore, 202 Galisteo St., 505-988-4226.
A Bastille Day presentation by Francois-Marie Patorni, 11 a.m., journeysantafe.com.

David Stuart

Garcia Street Books, 376 Garcia St., 505-986-0151
The author discusses and signs copies of *Anasazi America: Seventeen Centuries on the Road From Center Place*, noon.

Events

Santa Fe Greek Festival

Pavilion Room, Eldorado Hotel & Spa, 309 W. San Francisco St.
Food, music, dancing, and beer and wine; 11 a.m.-9 p.m., \$3, ages 12 and under no charge.

Family Day: Santa Fe International Folk Art Market

Museum Hill
More than 150 folk artists from more than 50 countries; 9 a.m.-5 p.m., \$10 in advance at holdmyticket.com; \$15 day of event; ages 16 and under no charge; 505-992-7600, folkartmarket.org.

Young Natives Arts & Crafts Show

Palace of the Governors courtyard, enter through the blue gate on Lincoln Ave., 505-476-5200
Works by the children and grandchildren of the Palace of the Governors' portal artists, 9 a.m.-3 p.m., no charge.

Nightlife

(See Page 69 for addresses)

Cowgirl BBQ

Santa Fe Revue, Americana, noon-3 p.m.; Tom Rheam Trio, rock/pop, 8 p.m.; no cover.

Duel Brewing

Americana/folk singer Reed Turner, 5 p.m., no cover.

El Farol

Chanteuse Nacha Mendez, 7:30 p.m., call for cover.

Evangelos

Tone and Company jam band, 8:30 p.m., call for cover.

Vanessie

Pianist Doug Montgomery, 6:30 p.m., call for cover.

MONDAY 7/14

In Concert

Santa Fe Bandstand

The Plaza
Americana trio American Jem, noon; Santa Fe Chiles Dixie Band, 6 p.m.; blues/rock artist Alex Maryol, 7:15-8:45 p.m.; no charge, visit santafebandstand.org for the summer series schedule.

Theater/Dance

Aspen Santa Fe Ballet

Las Campanas Clubhouse, 132 Clubhouse Dr.
Raise the Barre benefit for the ballet, 6 p.m., \$250, aspensantafeballet.com, 505-983-5591.

Books/Talks

Santa Fe Photographic Workshops

Santa Fe Prep auditorium, 1101 Camino de Cruz Blanca, 505-983-1400, Ext. 111
Instructor presentations by Allen Birnbach, Brenda Tharp, Laurie Klein, Rick Allred, Kate Breakey, and Julieanne Kost, 8-9:30 p.m., no charge.

Southwest Seminars lecture

Hotel Santa Fe, 1501 Paseo de Peralta
But That's What the Timpanagos Said: Bernardo de Miera Maps the Great Basin, 1777-1778, by John L. Kessell, 6 p.m., \$12 at the door, 505-466-2775, southwestseminars.org.

Events

Amish Quilts: The Story of America's First Abstract Art

Georgia O'Keeffe Museum Research Center, 135 Grant Ave., 505-946-1000
Workshop led by Janneken Smucker, 6 p.m., \$5.

Santa Fe Opera Backstage Tours

Santa Fe Opera, 301 Opera Dr., 505-986-5900
Behind-the-scenes tours including production and front-of-house areas are offered Mondays-Saturdays through Aug. 22, 9 a.m., \$10; seniors \$8; no charge for ages 22 and under.

Swing dance

Odd Fellows Hall, 1125 Cerrillos Rd.
Weekly all-ages informal swing dance, lessons 7-8 p.m., dance 8-10 p.m., , dance \$3, lesson and dance \$8, 505-473-0955.

Nightlife

(See Page 69 for addresses)

Cowgirl BBQ

Karaoke with Michele Leidig, 8 p.m., no cover.

El Farol

Blues/rock guitarist Tihó Dimitrov, 8:30 p.m., call for cover.

La Fiesta Lounge at La Fonda

Bill Hearne Trio, 7:30-11 p.m., no cover.

Upper Crust Pizza

Troubadour Gerry Carthy, on the patio 6-9 p.m., no cover.

Vanessie

Pianist Doug Montgomery, 6:30 p.m., call for cover.

TUESDAY 7/15

In Concert

Santa Fe Bandstand

The Plaza
Instrumental post-rock band As In We, 6-7 p.m.; funk and rock band The Strange, 7:15-8:45 p.m., no charge, summer schedule available online at santafebandstand.org.

Books/Talks

Jann Arrington Wolcott

Collected Works Bookstore, 202 Galisteo St., 505-988-4226.
The author discusses *Deathmark*, with an introduction by author Michael McGarrity, 6 p.m.

Events

Drawing Flowers: Working With the Excitement of Expressive Line

Georgia O'Keeffe Museum Research Center, 135 Grant Ave., 505-946-1000
Artist Ted Hallman guides participants in the use of pencils and charcoal for capturing dimensionality, 6-8 p.m., \$8.

Santa Fe Opera Backstage Tours

Santa Fe Opera, 301 Opera Dr., 505-986-5900
Behind-the-scenes tours including production and front-of-house areas are offered Mondays-Saturdays through Aug. 22, 9 a.m., \$10; seniors \$8; no charge for ages 22 and under.

Nightlife

(See Page 69 for addresses)

¡Chispa! at El Mesón

Argentine Tango Milonga, 7:30-11 p.m., call for cover.

Cowgirl BBQ

Americana singer/songwriter Matt Campbell, 8 p.m., no cover.

El Farol

Canyon Road Blues Jam, 8:30 p.m., call for cover.

La Fiesta Lounge at La Fonda

Bill Hearne Trio, 7:30-11 p.m., no cover.

Vanessie

Pianists Doug Montgomery (6-8 p.m.) and Bob Finnie (8-11 p.m.), call for cover.

WEDNESDAY 7/16

Gallery & Museum Openings

James Kelly Contemporary

1611 Paseo de Peralta, 505-989-1601
Pages, new drawings by James Drake, reception 5-7 p.m., through Aug. 27.

Museum of Contemporary Native Arts

Allan Houser Art Park, 108 Cathedral Place, 505-983-1777
Free public event held 5-7 p.m. in conjunction with the temporary site-specific installation (Pull of the Moon) on the Navajo Nation by Ai Weiwei and Bert Benally; including a 3-D digital landscape of the project, a live performance by German sound artist Robert Henke and Benally based on sounds captured during the installation, and a screening of the documentary *Bert & Wei Wei: TIME 2014* by Daniel Hyde and Blackhorse Lowe (exhibits up through Oct. 16), nmarts.org.

Opera

Fidelio

Santa Fe Opera, 301 Opera Dr., 505-986-5900
Soprano Alex Penda sings Leonore and tenor Paul Groves portrays Florestan in Stephen Wadsworth's production of Beethoven's drama; opening at 8:30 p.m., tickets begin at \$32, standing room \$15. (See story, Page 18)

In Concert

Music on the Hill 2014

St. John's College, 1160 Camino de Cruz Blanca, 505-984-6000
The annual free outdoor music series continues with SuperSax New Mexico; saxophonists include Sam Reid, Dave Anderson, and Aaron Lovato, featuring Bobbie Shew on trumpet, Bert Dalton on piano, Colin Deuble on bass, and Cal Haines on drums, 6-8 p.m. Wednesdays through July 23.

Santa Fe Bandstand

The Plaza
Albert Martinez & Sierra, noon; dance troupe Baile Español, 6-7 p.m.; chanteuse Nacha Mendez, 7:15-8:45 p.m., no charge, visit santafebandstand.org for the summer series schedule.

Books/Talks

Mia Kalef

Collected Works Bookstore, 202 Galisteo St., 505-988-4226.
The author discusses *The Secret Life of Babies: How Our Prebirth and Birth Experiences Shape Our World*, 6 p.m.

New Mexico Lawyers for the Arts Summer-Fall Series

Santa Fe Arts Commission Community Gallery, Santa Fe Community Convention Center, 201 W. Marcy St.
Artist as Entrepreneur: The Visual Artist, a panel discussion with Kate Russell, Jennifer Joseph, Ross Cheney, and Kevin Box, 6 p.m., no charge, nmlawyersforthearts.org.

Santa Fe Clay Wednesday Night Slide Lecture

545 Camino de la Familia, 505-984-1122
The series continues with ceramist Julia Galloway, 7 p.m., no charge.

Santa Fe Institute Community Lectures 2014

James A. Little Theater, New Mexico School for the Deaf, 1060 Cerrillos Rd.
Seth Lloyd of MIT discusses *Time Travel: Testing the Grandfather Paradox*, 7:30 p.m., no charge, 505-984-8800.

School for Advanced Research colloquium

660 Garcia St., 505-954-7200
Reconnecting the Past: Network Approaches to Regional Interaction in the Archaeology of the Late Prehistoric Southwest, a lecture by Barbara J. Mills, University of Arizona, noon-1 p.m., no charge.

Outdoors

Gentle walk

Pajarito Environmental Education Center, 3540 Orange St., 505-662-0460
One- to two-mile walk along a relatively flat trail in Los Alamos, 8 a.m. Meet at PEEC to carpool to the trailhead, no charge, register online at pajaritoeec.org or call 505-662-0460.

Events

Santa Fe Opera Backstage Tours

Santa Fe Opera, 301 Opera Dr., 505-986-5900
Behind-the-scenes tours including production and front-of-house areas are offered Mondays-Saturdays through Aug. 22, 9 a.m., \$10; seniors \$8; no charge for ages 22 and under.

Nightlife

(See Page 69 for addresses)

¡Chispa! at El Mesón

Flamenco guitarist Joaquin Gallegos, 7 p.m., no cover.

Cowgirl BBQ

Marlee Crow, Americana/indie folk, 8 p.m., no cover.

Del Charro

Mariachi Teotihuacan, with Stephen Montoya, Jaime Martinez, and Daniel Martinez, 7-9 p.m., no cover.

Duel Brewing

Santa Fe's own Bill Hearne, classic country and honky-tonk, 7 p.m., no cover.

El Farol

Guitarist/singer John Kurzweg, 8:30 p.m., no cover.

La Fiesta Lounge at La Fonda

Country band Half Broke Horses, 7:30 p.m., no cover.

Vanessie

Pianist Bob Finnie, 6:30-9:30 p.m., call for cover.

THURSDAY 7/17

Gallery & Museum Openings

Jean Cocteau Cinema Gallery

418 Montezuma Ave., 505-466-5528
Monoprints, linocuts, and digital mixed media by Linda Hunsaker and Eleanor Rappe, reception 5-7 p.m.

SITELines.2014: Unsettled Landscapes

SITE Santa Fe, 1606 Paseo de Peralta, 505-989-1199
SITE Santa Fe's biennial focusing on contemporary art of the Americas; ticketed opening-weekend programming: preview exhibit and cocktail party, 5-7 p.m.; gala dinner (Santa Fe Farmers Market Pavilion), 7:30 p.m.; tickets available online at sitesantafe.org. Ticketed events continue Friday and Saturday, July 18-19, culminating in a public opening 2-5 p.m. Saturday, July 19.

Classical Music

Santa Fe Desert Chorale

Loretto Chapel, 207 Old Santa Fe Trail
Spanish Mystics, featuring guitarist and lutenist Richard Savino, 8 p.m., \$20-\$55, desertchorale.org, 505-988-2282.



Giacobbe-Fritz Fine Art shows paintings by Ben Steele, 702 Canyon Rd.



Turner Carroll Gallery shows paintings by Rex Ray, 725 Canyon Rd.

In Concert

Santa Fe Bandstand

The Plaza
Folk-rock duo The Bus Tapes, 6-7 p.m.; blues/rock guitarist Tiho Dimitrov, 7:15-8:45 p.m.; no charge, santafebandstand.org.

Theater/Dance

Good People

Santa Fe Playhouse, 142 E. De Vargas St., 505-988-4262
Ironweed Productions presents David Lindsay-Abaire's drama, 7:30 p.m., \$10, runs Thursdays-Sundays through July 27.

The Phantom Tollbooth

Armory for the Arts, 1050 Old Pecos Trail
Santa Fe Performing Arts City Different Players (ages 7-12) presents its adaptation of Norton Juster's novel, 7 p.m., \$8, 505-984-1370, sfperformingarts.org, runs Saturdays and Sundays through July 27, opening night.

Books/Talks

Malcolm Ebright, Rick Hendricks, and Richard Hughes

Collected Works Bookstore, 202 Galisteo St., 505-988-4226.
The authors discuss *Four Square Leagues: Pueblo Indian Land in New Mexico*, 6 p.m.

Events

Santa Fe Opera Backstage Tours

Santa Fe Opera, 301 Opera Dr., 505-986-5900
Behind-the-scenes tours including production and front-of-house areas are offered Mondays-Saturdays through Aug. 22, 9 a.m., \$10; seniors \$8; no charge for ages 22 and under.

Nightlife

(See Page 69 for addresses)

¡Chispa! at El Mesón

Tierra Sonikete, featuring J.Q. Whitcomb on trumpet and Joaquin Gallegos on guitar, 7 p.m., no cover.

Cowgirl BBQ

Folk-rock duo The Bus Tapes, 8 p.m., no cover.

Duel Brewing

Prana Jazz Trio, with Cari Griffo, 8-11 p.m., no cover.

El Farol

Guitarras con Sabor, Gypsy Kings-style rhythms, 8 p.m., no cover.

La Boca

Chanteuse Nacha Mendez, 7-9 p.m., no cover.

La Fiesta Lounge at La Fonda

Country band Half Broke Horses, 7:30-11 p.m., no cover.

La Posada de Santa Fe Resort and Spa

Pat Malone Jazz Trio, 6-9 p.m., no cover.

Palace Restaurant and Saloon

Limelight karaoke, 10 p.m., no cover.

Pranzo Italian Grill

Pianist David Geist and vocalist Julie Trujillo, 6-9 p.m., call for cover.

Second Street Brewery

Joe West, psychedelic country, 6-9 p.m., no cover.

Second Street Brewery at the Railyard

Blues guitarist/singer Alex Maryol, 6-9 p.m., no cover.

Shadeh

DJ Oona, retro rewind, 9 p.m.-4 a.m., no cover.

Tiny's

Funk and rock band The Strange, 8 p.m.-close, no cover.

Vanessie

Pianist Bob Finnie, 6:30-9:30 p.m., call for cover.

ABIQUIÚ

Events/Performances

Galeria Arriba

Abiquiú Inn, 21120 NM 84, 505-685-4378
Paintings and works on paper by Valerie Gray, reception 5-7 p.m. Friday, July 11, through July.

Lavender in the Valley Festival

Purple Adobe Lavender Farm, NM 84 between mile markers 210 and 211, 505-685-0082
Food, artisans, music, and lavender crafts; 10 a.m.-4 p.m. Saturday and Sunday, July 12-13, follow the purple flags.

ALBUQUERQUE

Events/Performances

Ninth Annual New Mexico Jazz Festival

Friday, July 11, Claudia Vilella Quartet, 8 p.m., Outpost Performance Space, \$25 and \$30, 505-988-1234, ticketsantafe.org; Saturday, July 12, Cedric Watson & Bijou Creole, Wagogo opens, 1-4 p.m., Old Town Plaza, no charge; Sunday, July 13, Tootie Heath, Ethan Iverson, and the Ben Street Trio, 8 p.m., Outpost Performance Space, \$25-\$30, holdmyticket.com; Thursday, July 17, screening of *Bayou Maharajah: The Tragic Genius of James Booker*, 8 p.m., panel discussion follows with director Lily Keber and musician Henry Butler, Outpost Performance Space, no charge. Events run through July 27, newmexicोजazzfestival.org.

Chatter Sunday

The Kosmos, 1715 Fifth St. N.W.
Iridium Saxophone Quartet, 10:30 a.m. Sunday, July 13, \$15 at the door only, discounts available, chatterabq.org.

Chatter Cabaret

Hotel Andaluz, 125 Second St. N.W.
The ensemble performs a mixed repertoire of Bach, Martinū, and David Lang, 5 p.m. Sunday, July 13, \$25 in advance at brownpapertickets.com.

516 Arts

516 Central Ave. S.W., 505-242-1445
Digital Latin America, group show, through Aug. 30.

JEMEZ SPRINGS

Jemez Historic Site Elder in Residence Program

18160 NM 4, 575-829-3530
Jemez tribal elders provide tours and share stories on-site Friday-Sunday, July 11-13. Tours held 10 a.m. and 2 p.m., by site admission.

Santa Fe Opera Backstage Tours

Santa Fe Opera, 301 Opera Dr., 505-986-5900
Behind-the-scenes tours including production and front-of-house areas are offered Mondays-Saturdays through Aug. 22, 9 a.m., \$10; seniors \$8; no charge for ages 22 and under. Saturdays are free and include a short program preceding the tour at 8:30 a.m.

LOS ALAMOS

Events/Performances

Mesa Public Library Art Gallery

2400 Central Ave., 505-662-8253
Paintings by Ryszard Wasilewski, reception 4:30-6:30 p.m. Friday, July 11, through Aug. 5.

Gordon's Summer Concerts

Ashley Pond, gordonsummerconcerts.com
The weekly (Fridays) free music series continues with Eric McFadden Band, blues/rock/soul, 7 p.m. Friday, July 11.

TAOS

Events/Performances

29th Annual Taos Pueblo Pow Wow

Gates open at noon Friday, July 11; food and arts & crafts booths; 7 p.m. grand entry, 8 p.m. dance and drum competition; events continue through the weekend, taospueblopowwow.

Taos School of Music Festival

The season continues at 8 p.m. Saturday, July 12, Young Artist concert, music of Mendelssohn and Ravel, Hotel St. Bernard, Taos Ski Valley, no charge; 7:30 p.m. Sunday, July 13, Young Artist concert, music of Schubert and Janáček, Taos Community Auditorium, 145 Paseo del Pueblo Norte, \$8, 575-776-2388, taoschoolofmusic.com.

Martha Reich

Taos Inn, 125 Paseo del Pueblo Norte, 575-758-2233
Americana/folk guitarist-singer, 4-6 p.m., no cover.

PEOPLE WHO NEED PEOPLE

Artists

Santa Fe Photographic Workshops 25th Anniversary Photography Contest

Photographers age 18 and over can enter works on the theme of water in one or more categories: landscape, portrait, documentary, abstract; deadline September 17, guidelines and fee information are available online at santafeworkshops.com.

Filmmakers/Performers/Writers

2014 Fiesta Melodrama call for props

Workshop rehearsal space, 3205-B Richards Lane, 505-988-4262.
In need of furniture and clothing for costumes.

Musical Theatre Works Studio auditions

4001 Office Court Dr., Suite 206, 505-946-2468
Seeking males and females ages 11 to 99 to perform in staged readings of four new musicals at the Santa Fe Musical Theatre Festival in August; 1-4 p.m. Sunday, July 13.

PASA KIDS

Laser Mania in New Mexico Museum of Natural History and Science Planetarium

1801 Mountain Rd. N.W., 505-841-2804
Full-dome music videos; Friday, July 11: The Beatles 7 and 9 p.m.; Led Zeppelin 8-10 p.m.; Saturday, July 12: Pink Floyd: Best of Echoes 7 and 9 p.m.; Pink Floyd: Dark Side of the Moon 8 and 10 p.m.; nmnaturalhistory.org, by museum admission.

Young Natives Arts & Crafts Show

Palace of the Governors courtyard, enter through the blue gate on Lincoln Ave., 505-476-5200
Works by the children and grandchildren of the Palace of the Governors' portal artists, 9 a.m.-3 p.m. Saturday and Sunday, July 12-13, no charge.

Santa Fe Greek Festival

Pavilion Room, Eldorado Hotel & Spa, 309 W. San Francisco St.
Food, music, dancing, and beer and wine; 11 a.m.-9 p.m. Saturday and Sunday, July 12-13, \$3, ages 12 and under no charge.

Bee Hive Books: story times

328 Montezuma Ave., 505-780-8051
Music, stories, and movement for ages 3 and up at no charge, 10:30-11:15 a.m. every Wednesday in July; mindfulness workshop for ages 4 and up, 10:30-11:30 a.m. Sunday, July 13, \$12. ◀





MUSIC

The Impresario & Le Rossignol

Santa Fe Opera, 301 Opera Dr., 505-986-5900
Mozart's comic opera and Stravinsky's one-act opera share a double bill; opening at 8:30 p.m. Saturday, July 19, tickets begin at \$32, standing room \$15.

Patti Littlefield and the Arlen Asher Quintet

Museum Hill Café, 710 Camino Lejo
Jazz set, 7 p.m., Thursday, July 24, \$25, 505-983-6820, santafemusiccollective.org.

Santa Fe Chamber Music Festival

July 20 marks the beginning of the 42nd season. Performers include the Dover Quartet, the Orion String Quartet, pianist Inon Barnatan, and violinist William Preucil. Schedule available online at santafechambermusic.com.

Jon Nakamatsu: Schumann recital

St. Francis Auditorium, New Mexico Museum of Art, 107 W. Palace Ave.
Noon Tuesday, July 22, \$20-\$25, tickets available through Santa Fe Chamber Music, 505-982-1890, santafechambermusic.com.

Classical Meets Flamenco

Garrett's Desert Inn, 311 Old Santa Fe Trail
Classical guitarist David Wescott Yard and vocalist Mito de Soto, 7 p.m. Fridays July 25-Aug. 15, \$10 in advance, \$15 at the door, 505-204-5443.

Daniela Mack and Alex Shrader

St. John's United Methodist Church, 1200 Old Pecos Trail
Santa Fe Opera mezzo-soprano and tenor, accompanied by pianist Joseph Illick, 4 p.m. Thursday, July 31, \$22.50-\$75, 505-988-1234, ticketsantafe.org, visit performancesantafe.org for the 2014-2015 season schedule.

Woody Shaw tribute

Santa Fe Center for Spiritual Living, 505 Camino de los Marquez
Featuring J. Q. Whitcomb on trumpet, Ben Finberg on trombone, John Rangel on piano, Andy Zadrozny on bass, and John Trentacosta on drums, 7:30 p.m. Friday, Aug. 1, \$15 at the door.

Ray Lamontagne

The Downs of Santa Fe, 27475 W. Frontage Rd.
Singer/songwriter, 6:30 p.m. Tuesday, Aug. 5, with Belle Brigade, \$40 and \$62, 505-988-1234, ticketsantafe.org.

The Hold Steady

Santa Fe Sol Stage & Grill, 37 Fire Place
Rock band, 7:30 p.m. Wednesday, Aug. 6, \$25, 505-988-1234, ticketsantafe.org.

Sixth Annual Mariachi and Dance Concert

Buffalo Thunder Resort & Casino
Performers include Johnny Hernandez, Mariachi Sonido Nuevo, Allen Muñoz, and Mariachi Buenaventura; silent auction 5:30-6:30 p.m., music starts at 7 p.m. Saturday, Aug. 9, \$18 in advance at tickets.com, \$20 at the door, proceeds benefit the nonprofit organization Sangre de Cristo Funeral Fund.

Brenda Rae

St. John's United Methodist Church, 1200 Old Pecos Trail
Santa Fe Opera soprano, accompanied by pianist In Sun Suh, 4 p.m., Sunday, Aug. 10, \$22.50-\$75, 505-988-1234.

Lake Street Dive

Santa Fe Sol Stage & Grill
Jazz and soul band, 7:30 p.m. Sunday, Aug. 10, \$25, 505-988-1234, ticketsantafe.org.

Freedom Work: Folk Forms and Variations

Outpost Performance Space, Albuquerque
A five-part jazz suite by Santa Fean Lenny Tischler, 7:30 p.m. Thursday, Aug. 14, performers include woodwind artist Arlen Asher, saxophonist Brian Wingard, and bassist Andy Zadrozny, \$10-\$15 in advance at holdmyticket.com.

Hayes Carll and His Band

Santa Fe Sol Stage & Grill
Singer/songwriter, 7:30 p.m. Friday, August 15, \$17, ticketsantafe.org, 505-988-1234.

Music From Angel Fire

Angel Fire, Las Vegas, Raton, and Taos
The 31st festival season running Aug. 15-31, opening night features Ida Kavafian, Steven Tenenbom, and Anne-Marie McDermott in works of Beethoven and Andrew Hsu, tickets start at \$30, discounts available, 888-377-3300, musicfromangelfire.org.

Dave & Phil Alvin

James A. Little Theater, New Mexico School for the Deaf, 1060 Cerrillos Rd.
Country-blues brothers, 7:30 p.m. Tuesday, Aug. 19, \$25 in advance, \$29 at the door, brownpapertickets.com.

Avett Brothers

Santa Fe Opera, 301 Opera Dr.
North Carolina-based folk-rock band, 8 p.m. Wednesday, Aug. 27, \$35-\$55 in advance, ticketmaster.com, \$40-\$60 day of show.

Mariachi Extravaganza de Santa Fe

Santa Fe Community Convention Center, 101 W. Marcy St.
Annual Santa Fe Fiestas concert; Mariachi Reyna de Los Angeles (with Angel Espinoza), Mariachi Buenaventura, and Los Niños de Santa Fe, 7 p.m. Sunday, Aug. 31, call 505-988-1234 for advance tickets.

Jerry López and Friends

The Lensic
Local singer/guitarist, 7 p.m. Friday, Sept. 12, \$25-\$35, 505-988-1234, ticketsantafe.org, benefit concert in support of the National Latino Behavioral Health Association.

Lyle Lovett and His Large Band

The Downs of Santa Fe, 27475 W. Frontage Rd.
Texas singer/songwriter, 7 p.m. Saturday, Sept. 13, \$12-\$76, 505-988-1234, ticketsantafe.org.

Buckwheat Zydeco

Santa Fe Farmers Market Pavilion
Louisiana-based accordionist/singer, 7:30 p.m. Wednesday, Sept. 24, \$25 in advance, \$30 at the door, brownpapertickets.com.

THEATER/DANCE

As You Like It

Monte del Sol Charter School, 4157 Walking Rain Rd.
Santa Fe Shakespeare Society presents the comedy, outdoors at 6 p.m. Fridays-Sundays, July 18-Aug. 3, \$5-\$20 sliding scale, 505-490-6271, sfshakespeare.org.

Juan Siddi Flamenco Santa Fe

The Lensic
Dance ensemble, 8 p.m. July 18, July 27, Aug. 3, and Aug. 9, ticketsantafe.org, 505-988-1234.

Stop That Train Before Penny, or Buster Feels the Spirit

Teatro Paraguas Studio, 3205 Calle Marie, 505-424-1601
Southwest Rural Theatre Project presents the second melodrama in the series written and directed by Leslie Joy Coleman, 7:30 p.m. Saturday, July 19, \$12, discounts available.

Sylvia

Santa Fe Playhouse, 142 E. De Vargas St., 505-988-4262
The New Mexico Actors Lab presents A.R. Gurney's comedy, 7:30 p.m. Thursdays-Saturdays, 4 p.m. Sundays, July 31-Aug. 17, \$10-\$25, santafeplayhouse.org.

Daniel Ulbricht and New York City Ballet performers

The Lensic
7:30 p.m. Wednesday and Thursday, Aug. 13-14, includes a pre-performance talk by Ulbricht, \$13.50-\$100, 505-988-1234, ticketsantafe.org.

HAPPENINGS

Behind Adobe Walls Home and Garden Tour

Buses depart from Hotel Santa Fe, 1501 Paseo de Peralta
75th annual bus tour of private residences and gardens, sponsored by the Santa Fe Garden Club, 12:15-4:45 p.m. Tuesday, July 22 and July 29, \$75 per tour, \$22 optional lunch, contact Westwind Travel, 505-984-0022, thesantafegardenclub.org.

¡Viva la Cultura! Hispanic Cultural Festival

Museum of Spanish Colonial Art, 750 Camino Lejo, Museum Hill
Tuesday, July 22, through Saturday, July 26; including performances by Cipriano Vigil y la Familia Vigil and Nosotros, a Spanish Market preview, lunch and dinner events, and film screenings; hosted by the Spanish Colonial Arts Society, call 505-982-2226, Ext. 109, for advance tickets.

Salaam-Shalom

Santa Fe Farmers Market Pavilion, 1607 Paseo de Peralta
Annual gathering of young women from Palestine and Israel in conversation about their experiences

at the 2014 Creativity for Peace summer-camp session, 4:30-6 p.m. Thursday, July 31., \$25 in advance at creativityforpeace.com, \$30 at the door.

Fifth Annual Objects of Art Santa Fe

El Museo Cultural de Santa Fe, 555 Camino de la Familia
Contemporary, ethnic, and antique objects, including sculpture, jewelry, furniture, and books, ticketed preview 6-9 p.m. Thursday, Aug. 14 (\$50, benefits New Mexico PBS), show runs 11 a.m.-6 p.m. Friday-Sunday, Aug. 15-17, \$10 run of show in advance, \$13 at the door, objectsofartsantafe.com.

Antique American Indian Art Show Santa Fe 2014

El Museo Cultural de Santa Fe, 555 Camino de la Familia
Presenting works from national galleries; preview party 6-9 p.m. Tuesday, Aug. 19; show 11 a.m.-6 p.m. Wednesday and Thursday, Aug. 20-21, preview party and Institute of American Indian Arts benefit \$50 in advance and at the door, show tickets \$10 run of show in advance, \$13 at the door, tickets available online at antiqueindianartshow.com.

39th Annual Wheelwright Museum of the American Indian Benefit Auction

704 Camino Lejo, Museum Hill
Silent auction and preview of live auction items 4-6 p.m. Thursday, Aug. 21, Collector's Table 10 a.m. Friday, Aug. 22, followed by live auction preview and live auction; catered lunch available, 505-982-4636, wheelwright.org.

Indigenous Fine Art Market- IFAM

Santa Fe Railyard
More than 400 Native artists are slated to participate in this inaugural market Thursday-Saturday, Aug. 21-23; events include a kickoff Glow Dance Party, youth programming, and film screenings, indigefam.org.

93rd Annual Santa Fe Indian Market Launch Party

On The Plaza
Thursday, Aug. 21; sneak preview Friday, Aug. 22; live auction dinner and gala Saturday, Aug. 23; market Saturday and Sunday, Aug. 22-23; swaia.org, 505-983-5220.



Singer/songwriter Ray Lamontagne performs Aug. 5 at the Downs of Santa Fe.

AT THE GALLERIES

Blue Rain Gallery

130-C Lincoln Ave., 505-954-9902
Year of the Horse, paintings by Rimi Yang and blown-glass sculpture by Shelley Muzylowski Allen, through July 19.

Contemporary Tapestry Gallery

835 W. San Mateo Rd., 505-231-5904
51 American Cities, group show, through July 26.

Giacobbe Fritz Fine Art

702 Canyon Rd., 505-986-1156
Art Circus, paintings by Ben Steele, through July 20.

LewAllen Galleries at the Railyard

1613 Paseo de Peralta, 505-988-3250.
Henry Jackson: Halted in Transition, abstract paintings, through July 27.

Liquid Outpost

211 Old Santa Fe Trail, 505-983-6503
Paintings by Sheila Mahoney Keefe, through July.

Manitou Galleries

123 W. Palace Ave., 505-986-0440
Western Regionalism, works by Kim Wiggins and William Haskell, through July 18.

Matthews Gallery

669 Canyon Rd., 505-992-2882
Hannah Holliday Stewart: An Artistic Legacy Rediscovered, sculpture by the late artist, through July 18.

McLarry Fine Art

225 Canyon Rd., 505-988-1161
American Cowgirl, paintings by Donna Howell-Sickles, through July 18.

Meyer East Gallery

225 Canyon Rd., 505-983-1657
Paintings by David Dornan, through Thursday, July 17.

Patina Gallery

131 W. Palace Ave., 505-986-3432
La Vaca Loca, sculpture and works on paper by Victor Teng, through Thursday, July 17.

Tansey Contemporary

652 Canyon Rd., 505-995-8513
The Persistence of Religion, paintings by Patrick McGrath Muñoz, wood sculpture by Bob Cardinale, and beadwork by Teri Greeves, through July 22.

Ventana Fine Art

400 Canyon Rd., 505-883-8815
Movement and Grace, works by painter Jean Richardson and sculptor Rebecca Tobey, through July 16.

MUSEUMS & ART SPACES

Santa Fe

Santa Fe Center for Contemporary Arts

1050 Old Pecos Trail, 505-982-1338
The Curve, Center's annual show of award-winning photography • *Dear Erin Hart*, multimedia exhibit by Jessamyn Lovell • *Air Force: Aesthetic Experiments in Aviation*, works on paper created via remote-controlled airplane; exhibits through Aug. 10. Open Thursdays-Sundays; ccasantafe.org.

Georgia O'Keeffe Museum

217 Johnson St., 505-946-1000
Georgia O'Keeffe and Ansel Adams: The Hawaii Pictures • *Abiquiú Views*; through Sept. 17. Open daily; okeeffemuseum.org.

Museum of Contemporary Native Arts

108 Cathedral Place, 505-983-1777
Free public event held 5-7 p.m. Wednesday, July 16, in conjunction with the temporary site-specific



J. Miguel da Silva, *Retirantes*, 1995, in the Museum of International Folk Art exhibit *Between Two Worlds: Folk Artists Reflect on the Immigration Experience*.

installation (*Pull of the Moon*) on the Navajo Nation by Ai Weiwei and Bert Benally; including a 3-D digital landscape of the project, a live performance by German sound artist Robert Henke and Benally based on sounds captured during the installation, and a screening of the documentary *Bert & Wei Wei: TIME 2014* by Daniel Hyde and Blackhorse Lowe (exhibits up through Oct. 16) • *We Hold These Truths*, contemporary paper baskets by Shan Goshorn • *Brandywine Workshop Collection*, works by indigenous artists donated to the Philadelphia facility • *Articulations in Print*, group show • *Bon à Tirer*, prints from the permanent collection • *Native American Short Films*, continuous loop of five films from Sundance Institute's Native American and Indigenous Program; exhibits up through July. Closed Tuesdays; iaia.edu/museum.

Museum of Indian Arts & Culture

710 Camino Lejo, Museum Hill, 505-476-1269
Turquoise, Water, Sky: The Stone and Its Meaning, highlights from the museum's collection of jewelry • *Native American Portraits: Points of Inquiry*, vintage and contemporary photographs, through January 2015 • *The Buchsbaum Gallery of Southwestern Pottery*, traditional and contemporary works • *Here, Now, and Always*, artifacts from the museum collection. Open daily; indianartsandculture.org.

Museum of International Folk Art

706 Camino Lejo, Museum Hill, 505-476-1200
Between Two Worlds: Folk Artists Reflect on the Immigrant Experience, International Folk Arts Week kick-off exhibit on immigration • *Wooden Menagerie: Made in New Mexico*, early 20th-century carvings, through Feb. 15, 2015 • *Tako Kichi: Kite Crazy in Japan*, exhibition of Japanese kites, through July 27 • *New World Cuisine: The Histories of Chocolate, Mate y Más* • *Multiple Visions: A Common Bond*, international collection of toys and folk art • *Brasil and Arte Popular*, pieces from the museum's collection, through Aug. 10. Open daily; internationalfolkart.org.

Museum of Spanish Colonial Art

750 Camino Lejo, Museum Hill, 505-982-2226
Secrets of the Symbols: The Hidden Language of Spanish Colonial Art • *San Ysidro/St. Isidore the Farmer*, bultos, retablos, straw appliqué, and paintings on tin • *Recent Acquisitions*, colonial and 19th-century Mexican art, sculpture, and furniture; also, work by young Spanish Market artists • *The Delgado Room*, late-colonial-period re-creation; spanishcolonial.org; open daily through Sept. 1.

New Mexico History Museum/ Palace of the Governors

113 Lincoln Ave., 505-476-5200
Poetics of Light: Pinhole Photography, through March 29, 2015 • *Transformed by New Mexico*, work by photographer Donald Woodman, through Oct. 12 • *Water Over Mountain*, Channing Huser's photographic installation • *Telling New Mexico: Stories From Then and Now*, core exhibit • *Santa Fe Found: Fragments of Time*, the archaeological and historical roots of Santa Fe; nmhistorymuseum.org; open daily through Oct. 7.

New Mexico Museum of Art

107 W. Palace Ave., 505-476-5072
Local Color: Judy Chicago in New Mexico 1984-2014, focusing on public and personal projects, through Oct. 12 • *Southwestern Allure: The Art of the Santa Fe Art Colony*, including early 20th-century paintings by George Bellows, Andrew Dasburg, Marsden Hartley, and Cady Wells, through July 27 • *Focus on Photography*, rotating exhibits • *Beneath Our Feet*, photographs by Joan Myers • *Grounded*, landscapes from the museum collection • *Photo Lab*, interactive exhibit explaining the processes used to make color and platinum-palladium prints from the collection, through March 2015 • *New Mexico Art Tells New Mexico History*, including works by E. Irving Couse, T.C. Cannon, and Agnes Martin, through 2015 • *Spotlight on Gustave Baumann*, works from the museum's collection, through 2015. Open daily through Oct. 7; nmartmuseum.org.

Poeh Cultural Center and Museum

78 Cities of Gold Rd., 505-455-3334
Nah Poeh Meng, 1,600-square-foot installation highlighting the works of Pueblo artists and Pueblo history. Closed Saturdays and Sundays; poehcenter.org.

Wheelwright Museum of the American Indian

704 Camino Lejo, Museum Hill, 505-982-4636
Works by Diné photographer Will Wilson, through April 19, 2015. Core exhibits include contemporary and historic Native American art. Open daily; wheelwright.org.

Albuquerque

Albuquerque Museum of Art & History

2000 Mountain Rd. N.W., 505-243-7255
Everybody's Neighbor: Vivian Vance, family memorabilia and the museum's photo archives of the former Albuquerque resident, through January 2015 • *Arte en la Charrería: The Artisan-ship of Mexican Equestrian Culture*, more than 150 examples of craftsmanship and design distinctive to the charro. Closed Mondays; cabq.gov/culturalservices/albuquerque-museum/general-museum-information; closed Mondays.

Holocaust and Intolerance Museum of New Mexico

616 Central Ave. S.W., 505-247-0606
Exhibits on overcoming intolerance and prejudice; nmholocaustmuseum.org; closed Sundays and Mondays.

Indian Pueblo Cultural Center

2401 12th St. N.W., 866-855-7902
Our Land, Our Culture, Our Story, historical overview of the Pueblo world, and contemporary

artwork and craftsmanship of each of the 19 pueblos. Weekend Native dance performances; indianpueblo.org.

Maxwell Museum of Anthropology

UNM campus, 1 University Blvd. N.E., 505-277-4405
The museum's collection includes individual archaeological, ethnological, archival, photographic, and skeletal items. Closed Sundays and Mondays; maxwellmuseum.unm.edu.

National Hispanic Cultural Center

1701 Fourth St. S.W., 505-604-6896
¡Papel! Pico, Rico y Chico, group show of works in the traditional art of *papel picado* (cut paper). Closed Mondays; nationalhispaniccenter.org.

UNM Art Museum

1 University of New Mexico Blvd., 505-277-4001
Oscar Muñoz: Biografías, video works; *Luz Restirada*, Latin American photography from the museum collection, through July 26. Closed Sundays and Mondays; unmartmuseum.org.

Los Alamos

Bradbury Science Museum

1350 Central Ave., 505-667-4444
Information on the history of Los Alamos and the Manhattan Project as well as over 40 interactive exhibits. Open daily; lanl.gov/museum.

Los Alamos Historical Museum

1050 Bath tub Row, 505-662-4493
Core exhibits on area geology, homesteaders, and the Manhattan Project. Housed in the Guest Cottage of the Los Alamos Ranch School. Open daily; losalamoshistory.org.

Pajarito Environmental Education Center

3540 Orange St., 505-662-0460
Exhibits of flora and fauna of the Pajarito Plateau; herbarium, live amphibians, and butterfly and xeric gardens. Closed Sundays and Mondays; pajaritoec.org.

Taos

E.L. Blumenschein Home and Museum

222 Ledoux St., 575-758-0505
Color-field paintings by Donald Roy Thompson, through Aug. 10. Hacienda art from the Blumenschein family collection, European and Spanish colonial antiques. Open daily; taohistoricmuseums.org.

Harwood Museum of Art

238 Ledoux St., 575-758-9826
Highlights From the Gus Foster Collection, contemporary works, through Sept. 7. Open daily through October; harwoodmuseum.org.

La Hacienda de los Martinez

708 Hacienda Way, 575-758-1000
One of the few Northern New Mexico-style, Spanish-colonial "great houses" remaining in the American Southwest. Built in 1804 by Severino Martinez. taohistoricmuseums.org; open daily.

Millicent Rogers Museum

1504 Millicent Rogers Rd., 575-758-2462
Historical collections of Native American jewelry, ceramics, and paintings; Hispanic textiles, metalwork, and sculpture; and contemporary jewelry. Open daily through October; millicentrogers.org.

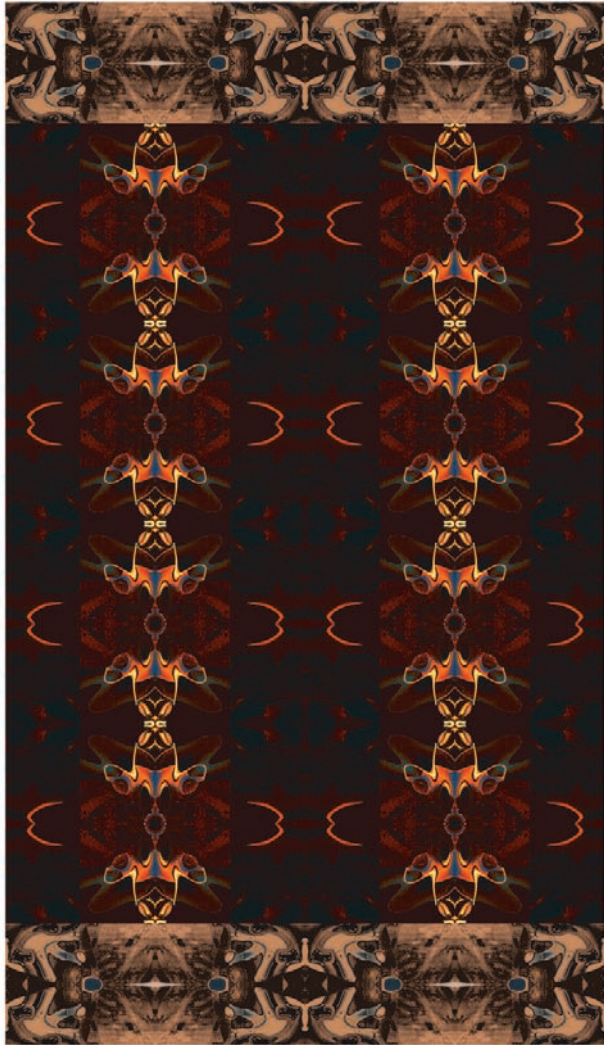
Taos Art Museum at Fechin House

227 Paseo del Pueblo Norte, 575-758-2690
Intimate and International: The Art of Nicolai Fechin, paintings and drawings, through Sept. 21. Housed in the studio and home that artist Nicolai Fechin built for his family between 1927 and 1933. Closed Mondays; taosartmuseum.org.

Roger Arvid Anderson: Byzantium 2014, archival rag paper pigment print

New Concept Gallery, 610 Canyon Road, 505-795-7570

Sailing to Byzantium exhibits large-scale pigment prints and bronze sculpture by Roger Arvid Anderson, whose prints draw on a number of sources that include Navajo, Peruvian, Chinese, and Japanese textile designs. Also on show is sculpture from Anderson's *Trail Marker* series inspired by historic cairns. The exhibition's title is taken from the William Butler Yeats poem. The opening reception is at 5 p.m. on Friday, July 11.



Bryce Cameron Liston: Marigolds 2014, oil on canvas

Sage Creek Gallery, 421 Canyon Road, 505-988-3444

A show of figurative paintings by Bryce Cameron Liston, *Seasons of Beauty*, opens with a 5 p.m. reception on Friday, July 11. Liston's works, in the tradition of late-19th-century paintings by artists such as John Singer Sargent and John William Waterhouse, capture intimate scenes of idyllic beauty in oils.

EXHIBITIONISM



A PEEK AT WHAT'S SHOWING AROUND TOWN

Joe Long: Ferris Wheel 2014, digital print of a 1949 photograph

Red Dot Gallery, 826 Canyon Road, 505-820-7338

This venue's Annual Summer Art Exhibition opens with a reception on Friday, July 11, at 4:30 p.m. The show includes pieces by students, faculty, and alumni of the Santa Fe Community College as well as students and alumni of Eastern New Mexico University, Clovis Community College, Santa Fe University of Art and Design, and the Institute of American Indian Arts. Glass and ceramics, paintings, photographs, and other art forms are included. The gallery is open Fridays through Sundays only.



Cate Moses: We'll Get There 2014, oil on panel

Santa Fe University of Art and Design, Fogelson Library, 1600 St. Michael's Drive, 505-473-6569

Water Spirits Walking on the Land shows new paintings and photographs by Cate Moses, whose works combine quirky depictions of animals and unusual subjects with elements of traditional wildlife art and landscape photography. There is a 5 p.m. opening reception on Friday, July 11.



Alex Watts: Emergence 2014, bronze

Winterowd Fine Art, 701 Canyon Road, 505-992-8878

The gallery celebrates its 10-year anniversary with a group show. The exhibit includes watercolor landscapes by Sarah Biennu, Karen Bexfield's glass sculptures, Jamie Kirkland's landscapes, bronze figurative sculpture by Alex Watts, Tom Kirby's minimalist abstractions, Charlie Burk's detailed paintings of grass, and more. The reception is on Friday, July 11, at 5 p.m.

