

PASA WEEK

ARTS AND ENTERTAINMENT CALENDAR
July 4-10, 2014

CALENDAR LISTING GUIDELINES

- To list an event in Pasa Week, send an email or press release to pasa@sfnewmexican.com or pambeach@sfnewmexican.com.
- Send material no less than two weeks prior to the desired publication date.
- For each event, provide the following information: time, day, date, venue, venue address, ticket prices, web address, phone number, brief description of event (15 to 20 words).
- All submissions are welcome. However, events are included in Pasa Week as space allows.
- There is no charge for listings.
- Return of photos and other materials cannot be guaranteed.
- Pasatiempo reserves the right to publish received information and photographs on The New Mexican website.
- For further information contact Pamela Beach, pambeach@sfnewmexican.com, 202 E. Marcy St., Santa Fe, NM 87501, phone: 505-986-3019, fax: 505-820-0803.

CALENDAR COMPILED BY PAMELA BEACH

FRIDAY 7/4

Gallery & Museum Openings

Art Gone Wild Gallery

130-D Lincoln Ave., 505-820-1004
Wildlife pastels by D. Arthur Wilson, reception and artist talk 5-8 p.m., talks continue through Monday.

Bill Hester Fine Art

621 Canyon Rd., 505-660-5966
Storyteller, bronze sculpture by David Unger, reception 5-7 p.m., through July.

Blue Rain Gallery

130-C Lincoln Ave., 505-954-9902
Year of the Horse, paintings by Rimi Yang and blown-glass sculpture by Shelley Muzylowski Allen, reception 5-7 p.m., through July 19.

Contemporary Tapestry Gallery

835 W. San Mateo Rd., 505-231-5904
51 American Cities, group show, reception 3-6 p.m. today through Sunday, exhibit up through July 26.

Giacobbe Fritz Fine Art

702 Canyon Rd., 505-986-1156
Art Circus, paintings by Ben Steele, reception 5-7 p.m., through July 20.

La Mesa of Santa Fe

225 Canyon Rd., 505-984-1688
KaBloom!, sculpture by Christopher Thomson, reception 5-7 p.m.

Liquid Outpost

211 Old Santa Fe Trail, 505-983-6503
Paintings by Sheila Mahoney Keefe, reception 3-5 p.m., through July.

Manitou Galleries

123 W. Palace Ave., 505-986-0440
Western Regionalism, works by Kim Wiggins and William Haskell, reception 5-7:30 p.m., through July 18.

Matthews Gallery

669 Canyon Rd., 505-992-2882
Hannah Holliday Stewart: An Artistic Legacy Rediscovered, sculpture by the late artist, reception 5-7 p.m., through July 18. (See review, Page 40)

McLary Fine Art

225 Canyon Rd., 505-988-1161
American Cowgirl, paintings by Donna Howell-Sickles, reception 5-7 p.m., through July 18.

Meyer East Gallery

225 Canyon Rd., 505-983-1657
Paintings by David Dornan, reception 5-7 p.m., through July 17.

Patina Gallery

131 W. Palace Ave., 505-986-3432
La Vaca Loca, sculpture and works on paper by Victor Teng, reception 5-7:30 p.m., through July 17.



Contemporary Tapestry Gallery shows works by Robin Reider, 835 W. San Mateo Rd.

Pop Gallery

125 Lincoln Ave., Suite 111, 505-820-0788
Paintings by Daniel Martin Diaz, art raffle to benefit Southwest CARE Center, tickets \$10 or thirteen for \$100, through August.

Santa Fe Gallery

223 E. Palace Ave., 505-983-6429
Photographs by Robert Dawson; works by jewelers James Faks and Kenna Chavarria, reception 5-8 p.m.

Selby Fleetwood Gallery

600 Canyon Rd., 505-992-8877
Box 2, sculpture by Kevin Box and Jennifer Cady Box, reception 5-7:30 p.m., through Thursday.

Silver Sun Gallery

656 Canyon Rd., 505-983-8743
Paint Skins, mixed-media paintings by Kathamann, reception 5-7 p.m., through July 22.

Tanse Contemporary

652 Canyon Rd., 505-995-8513
The Persistence of Religion, paintings by Patrick McGrath Muñoz, wood sculpture by Bob Cardinale, and beadwork by Teri Greeves, reception 5-7 p.m., through July 22.

Ventana Fine Art

400 Canyon Rd., 505-883-8815
Movement and Grace, works by painter Jean Richardson and sculptor Rebecca Tobey, reception 5-7 p.m., through July 16.

Opera

Family night: Don Pasquale

Santa Fe Opera, 301 Opera Dr., 505-986-5900
Soprano Laura Tatalescu and remarkable tenor Alek Shrader are the young lovers in director Laurent Pelly's shtick-laden take on Donizetti's comedy, apparently inspired by sit-com gags.

As the title character, baritone Andrew Shore settles for being just the butt of the practical joke that surrounds him. Corrado Roveris presides stylishly in the orchestra pit. 8:30 p.m., family-night tickets \$25; children \$12; santafeopera.org.

Classical Music

TGIF Chancel Bell Choir recital

First Presbyterian Church of Santa Fe, 208 Grant Ave., 505-982-8544, Ext. 16.
Music of Douglas E. Wagner, Hart Morris, and David Beatty, 5:30-6 p.m., donations welcome.

In Concert

Santa Fe Concert Band

The Plaza bandstand
Fourth of July performance during Pancakes on the Plaza, 8 a.m., no charge.

In the Mood: Artists and musicians in collaboration

Vivo Contemporary, 725 Canyon Rd., 505-982-1320
Meet-and-greet with live music 5-7 p.m. Fridays through Aug. 29, tonight's performer: guitarist Shawn Lyon, no charge.

Events

39th Annual Pancakes on the Plaza

Car show, arts & crafts booths, silly-hat contest, and music (American Jem performs at 1:30 p.m.), pancakes served 7 a.m.-noon, events run until 5 p.m., \$8, pancakesontheplaza.com.

Santa Fe Opera Backstage Tours

Santa Fe Opera, 301 Opera Dr., 505-986-5900
Behind-the-scenes tours including production and front-of-house areas are offered Mondays-Saturdays through Aug. 22, 9 a.m., \$10; seniors \$8; no charge for ages 22 and under.

Nightlife

(See addresses to the right)

Bishop's Lodge Ranch Resort & Spa

Jazz guitarist Pat Malone, 6-9 p.m., no cover.

Cowgirl BBQ

Jim Almand, classic country, 5-7:30 p.m.; Deltaphonic, outlaw funk, 8:30 p.m., no cover.

¡Chispa! at El Mesón

Three Faces of Jazz, with guest tumpeter Tom Rheam, 7:30 p.m., no cover.

El Farol

Sean Healan Band, rock, 9 p.m., call for cover.

La Posada de Santa Fe Resort and Spa

Nacha Mendez Quartet, 6:30 p.m., no cover.

Palace Restaurant & Saloon

House music, 10 p.m., no cover.

Pranzo Italian Grill

Pianist John Rangel and vocalist Barbara Bentree, 6-9 p.m., call for cover.

Second Street Brewery

Singer/songwriter Eryn Bent, 6-9 p.m., no cover.

Second Street Brewery at the Railyard

Groove-jazz ensemble Müshi, 7-10 p.m., no cover.

Shadeh

DJ Chil and Kissed Alive, 9 p.m.-4 a.m., no cover.

Swiss Bakery Pastries and Bistro

Troubadour Gerry Carthy, 7-10 p.m., no cover.

Tiny's

Guitarist Chris Abeyta, 5:30-8:30 p.m.; classic-rock band The Jakes, 8:30 p.m.-close; no cover.

Vanessie

Pianists Doug Montgomery (6-8 p.m.) and Bob Finnie (8-11 p.m.), call for cover.

SATURDAY 7/5

Gallery & Museum Openings

Monroe Gallery of Photography

112 Don Gaspar Ave., 505-992-0800
Once Upon a Time in America, work by documentary photographer Steve Schapiro, reception 5-7 p.m., through Sept. 21.

Opera

Carmen

Santa Fe Opera, 301 Opera Dr., 505-986-5900
In this Stephen Lawless production, Bizet's tragedy unrolls in the U.S.-Mexican borderlands a half century ago, with black-and-white film integrating with live stage action to enhance the period feel. Daniela Mack is Carmen (until Ana María Martínez assumes the role beginning

July 28), Joyce El-Khoury sings Micaëla, Roberto De Biasio portrays Don José. 8:30 p.m., tickets begin at \$32, standing room \$15.

In Concert

Black Sea Hotel

Gig Performance Space, 1808 Second St., gigsantafe.com
New York-based Balkan a cappella trio, 8 p.m., \$20 at the door.

Southside Santa Fe Bandstand

3466 Zafarano Dr., behind Regal Stadium 14
Rock 'n' roll band Little Leroy and His Pack of Lies, 7-8 p.m.; old-school rock band The Pleasure Pilots, 8:15-9:45 p.m.; no charge, visit santafebandstand.org for the summer series schedule.

The Soulshine Tour

Downs of Santa Fe, 27475 W. Frontage Rd.
Michael Franti and Spearhead, SOJA, Brett Dennen, and Trevor Hall, 6 p.m., \$47 and \$64, kids \$15, 505-988-1234, ticketssantafe.org and holdmyticket.com, lawn chairs and blankets recommended.

Events

Santa Fe Opera Backstage Tours

Santa Fe Opera, 301 Opera Dr., 505-986-5900
Behind-the-scenes tours including production and front-of-house areas are offered Mondays-Saturdays through Aug. 22, Saturday short program 8:30 a.m., tour 9 a.m., no charge on Saturdays.

Santa Fe Wine Festival

El Rancho de las Golondrinas, 334 Los Pinos Rd., 505-471-2261
21st annual affair; tastings, food, music, and arts & crafts, noon-6 p.m. today and Sunday, \$13, discounts available.

Nightlife

(See addresses to the right)

¡Chispa! at El Mesón

Noche de Flamenco, with Flamenco Compaz, 7:30-10:30 p.m., no cover.

Cowgirl BBQ

Bill Hearne Trio, classic country, 2-5 p.m.; Busy & The Crazy 88, Busy McCarroll, Kevin Zoernig, Baird Banner, and Justin Bransford, hipster pop, 8:30 p.m.-close; no cover.

Del Charro

Mariachi Teotihuacan, with Stephen Montoya, Jaime Martinez, and Daniel Martinez, 2-9 p.m., no cover.

Duel Brewing

Groove-jazz ensemble Müshi, 8 p.m., no cover.

El Farol

C.S. Rockshow with Don Curry, Pete Springer, and Ron Crowder, 9 p.m.-close, call for cover.

La Fiesta Lounge at La Fonda

Country band Buffalo Nickel, 8 p.m., no cover.

La Posada de Santa Fe Resort and Spa

Pat Malone Jazz Trio, 6-9 p.m., no cover.

Palace Restaurant and Saloon

Alex Maryol on the patio, 2 p.m., no cover; DSR & Friends, 10 p.m.; call for cover.

Pranzo Italian Grill

Pianist David Geist and vocalist Julie Trujillo, 6-9 p.m., call for cover.

Second Street Brewery

Alex Culbreth, Americana and alternative country, 6-9 p.m., no cover.

Second Street Brewery

MVIII Jazz, 7-10 p.m., no cover.

Shadeh

DJ Flo Fader, 9 p.m.-4 a.m., no cover.

Sweetwater Harvest Kitchen

John Serkin on Hawaiian slack-key guitar, 6 p.m., no cover.

Swiss Bakery Pastries and Bistro

Jazz off the Plaza, with The Shiners Club Jazz Band, 7:30-close, no cover.

Tiny's

Classic-rock band Dusk, 8:30 p.m.-close, no cover.

Vanessie

Pianists Doug Montgomery (6-8 p.m.) and Bob Finnie (8-11 p.m.), call for cover.

SUNDAY 7/6

Gallery & Museum Openings

El Gancho Fitness Swim & Racquet Club

104 Old Las Vegas Hwy., 505-988-5000
Watercolors and glass art by Laura Fram Cowan, reception 3-5 p.m., through July.





Michael Franti and Spearhead perform on Saturday at the Downs of Santa Fe, 27475 W. Frontage Rd.

Museum of International Folk Art

706 Camino Lejo, Museum Hill, 505-476-1200
Between Two Worlds: Folk Artists Reflect on the Immigrant Experience, International Folk Arts Week kick-off exhibit, reception with artist meet-and-greet, live music by Savor, workshops, and talks 1-4 p.m., by museum admission.

Classical Music

Santa Fe Flute Immersion 2014

Immaculate Heart of Mary Retreat and Conference Center Chapel, 50 Mount Carmel Rd.
 Flutists Bart Feller, Susan Levitin, and Linda Marianiello, and pianist Bill Epstein perform music of Bach, Mozart, and Piazzolla, 5:30 p.m., no charge, nmpperformingartsociety.org.

Events

Museum of Indian Arts & Culture Native portrait studio

710 Camino Lejo, Museum Hill, 505-476-1269
 A photo booth will be on the premises from 10 a.m.-5 p.m. today through July 20. Take your photos with you, but leave one print for the Community Gallery.

New Mexico Museum of Art Family Fun Day

107 W. Palace Ave., 505-476-5068
 Explore the museum with guided activities and participate in an art project titled *Outside the Frame*, 1-4 p.m., no charge.

Santa Fe Wine Festival

El Rancho de las Golondrinas, 334 Los Pinos Rd., 505-471-2261
 21st annual affair; tastings, food, music, and arts & crafts, noon-6 p.m., \$13, discounts available.

Nightlife

(See Page 57 for addresses)

Cowgirl BBQ

Santa Fe Revue, all-star Americana, noon-3 p.m.; Alex Culbreth, Americana and alternative country, 8 p.m.; no cover.

Duel Brewing

Railyard Reunion Band, country and bluegrass, 5 p.m., no cover.

El Farol

Chanteuse Nacha Mendez and Company, 7:30 p.m., call for cover.

Evangelo's

Tone and Company jam band, 8:30-11:30 p.m., call for cover.

Second Street Brewery at the Railyard

Bluesman Alex Maryol, 1-4 p.m., no cover.

Vanessie

Pianist Doug Montgomery, 6:30 p.m., call for cover.

MONDAY 7/7

Gallery & Museum Openings

Casa

1098 1/2 S. St. Francis Dr., 505-982-2592
Corazones Heridos, fume-fired ceramics by Susan Ohori.

In Concert

Little Tybee

Gig Performance Space, 1808-H Second St.
 Folk/rock band, 8 p.m., \$20 at the door, gigsantafe.com.

Santa Fe Bandstand

The Plaza
 Balladeer J. Michael Combs and Eaglestar, noon-1 p.m.; cumbias/rancheras duo Sorela, 6-7 p.m.; Tex-Mex/honky-tonk band Tejas Brothers, 7:15-8:45 p.m.; visit santafebandstand.org for the summer series schedule, no charge.

Books/Talks

Breakfast With O'Keeffe

Georgia O'Keeffe Museum, 217 Johnson St., 505-946-1000.
 Gallery talk on the David H. Arrington Ansel Adams collection, 8:30 a.m., by museum admission.

Santa Fe Photographic Workshops

Santa Fe Prep auditorium, 1101 Camino de Cruz Blanca, 505-983-1400, Ext. 111
 Instructor presentations by Paul Mobley, Arthur Meyerson, and Bobbi Lane, 8-9:30 p.m., no charge.

Southwest Seminars lecture

Hotel Santa Fe, 1501 Paseo de Peralta
Southwest Conquest of the Southern Cone of South America, by Thomas Dalton Dillehay, 6 p.m., \$12 at the door, southwestseminars.org, 505-466-2775.

Events

Santa Fe Opera Backstage Tours

Santa Fe Opera, 301 Opera Dr., 505-986-5900
 Behind-the-scenes tours including production and front-of-house areas are offered Mondays-Saturdays through Aug. 22, 9 a.m., \$10; seniors \$8; no charge for ages 22 and under.

Swing dance

Odd Fellows Hall, 1125 Cerrillos Rd.
 Weekly all-ages informal swing dance, lessons 7-8 p.m., dance 8-10 p.m., dance \$3, lesson and dance \$8, 505-473-0955.

Nightlife

(See Page 57 for addresses)

Cowgirl BBQ

Karaoke with Michele Leidig, 8 p.m., no cover.

La Fiesta Lounge at La Fonda

Bill Hearne Trio, 7:30-11 p.m., no cover.

Upper Crust Pizza

Troubadour Gerry Carthy, 6-9 p.m., no cover.

Vanessie

Pianist Doug Montgomery, 6:30 p.m., call for cover.

TUESDAY 7/8

Gallery & Museum Openings

Santa Fe Weaving Gallery

124 1/2 Galisteo St., 505-982-1737
Contemporary South + Southeast Asia Textiles, group show of works by Asian artists, through July 14.

In Concert

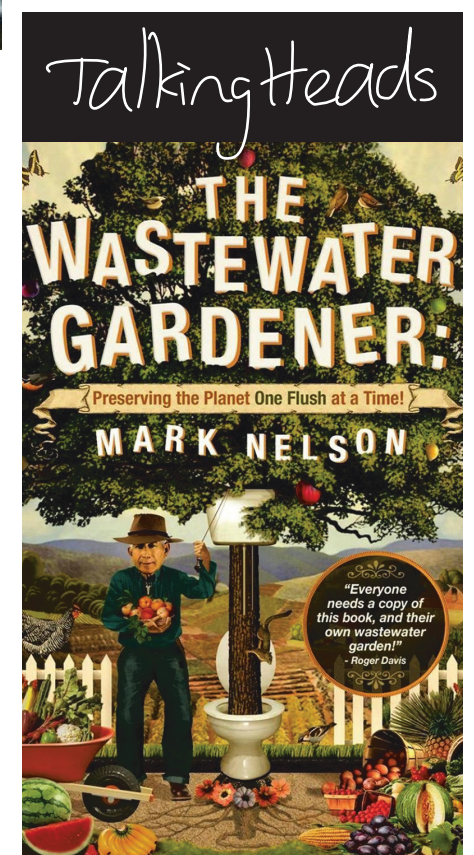
Santa Fe Bandstand

The Plaza
 Bill Palmer's TV Killers, Americana/rock, 7:15-8:45 p.m., no charge, summer schedule available online at santafebandstand.org.

Books/Talks

Jim Fergus

Collected Works Bookstore, 202 Galisteo St., 505-988-4226
 The author discusses and signs copies of *Memory of Love*, 6 p.m. (See *Subtexts*, Page 16)



MARK NELSON

The ecosystem engineer and author of *The Wastewater Gardener: Preserving the Planet One Flush at a Time* discusses case studies and addresses the problem of the world's dwindling supply of fresh water at 6 p.m. Thursday, July 10, at Collected Works Bookstore, 202 Galisteo St. and at the Santa Fe Farmers Market Pavillion at 9 a.m., Saturday, July 12. Call 505-988-4226.

Events

Santa Fe Opera Backstage Tours

Santa Fe Opera, 301 Opera Dr., 505-986-5900
Behind-the-scenes tours including production and front-of-house areas are offered Mondays-Saturdays through Aug. 22, 9 a.m., \$10; seniors \$8; no charge for ages 22 and under.

Nightlife

(See Page 57 for addresses)

¡Chispa! at El Mesón

Argentine Tango Milonga, 7:30-11 p.m., call for cover.

Cowgirl BBQ

Local bluesman Kenny Skywolf, 8 p.m., no cover.

Duel Brewing

Folk singer/songwriter Joshua Whalen, 7 p.m., no cover.

El Farol

Canyon Road Blues Jam, 8:30 p.m., call for cover.

La Fiesta Lounge at La Fonda

Bill Hearne Trio, 7:30-11 p.m., no cover.

Tiny's

Singer/songwriters open-mic, 7-10 p.m., no cover.

Vanessie

Pianists Doug Montgomery (6-8 p.m.) and Bob Finnie (8-11 p.m.), call for cover.

WEDNESDAY 7/9

Gallery & Museum Openings

Museum of Spanish Colonial Art

750 Camino Lejo, Museum Hill, 505-982-2226
Secrets of the Symbols: The Hidden Language of Spanish Colonial Art.

Scheinbaum & Russek

812 Camino Acoma, 505-988-5116
Tres Visiones, photographs by Manuel Álvarez Bravo (1902-2002), Manuel Carrillo (1906-1989), and Luis González Palma, through Sept. 13, reception and book signing by Stuart Ashman author of *Mi Querido México* 4-6 p.m.

Opera

Don Pasquale

Santa Fe Opera, 301 Opera Dr., 505-986-5900
Soprano Laura Tatalescu and remarkable tenor Alek Shrader are the young lovers in director Laurent Pelly's shtick-laden take on Donizetti's comedy, apparently inspired by sit-com gags. As the title character, baritone Andrew Shore settles for being just the butt of the practical joke that surrounds him. Corrado Roveris presides stylishly in the orchestra pit. 8:30 p.m., family-night tickets \$25; children \$12; santafeopera.org.

In Concert

Music on the Hill 2014

St. John's College, 1160 Camino de Cruz Blanca, 505-984-6000
The annual free outdoor music series continues with jazz vocalist Annie Sellick, 6-8 p.m. Wednesdays through July 23.

Santa Fe Bandstand

The Plaza
Traditional Ecuadorian folk ensemble Grupo Samy, noon-1 p.m.; Santa Fe Opera apprentices, 6-7 p.m.; Joe King Carrasco, Tex-Mex rock 'n' roll; no charge, visit santafebandstand.org for the summer series schedule.

Books/Talks

**Mining and Water Pollution:
The Experience of Two Copper Districts
in Michigan and New Mexico**

School for Advanced Research boardroom, 660 Garcia St., 505-954-7200

A talk by professor Carol Ann MacLennan, noon-1 p.m., no charge.

Santa Fe Clay Wednesday Night Slide Lecture

545 Camino de la Familia, 505-984-1122
The series continues with ceramist Linda Christianson, 7 p.m., no charge.

Events

Artist demonstration: Southwest pottery

Museum of Indian Arts and Culture, 710 Camino Lejo, Museum Hill, 505-476-1269
Native artists discuss and demonstrate different techniques, clays, and styles, 1-4 p.m.

Santa Fe Opera Backstage Tours

Santa Fe Opera, 301 Opera Dr., 505-986-5900
Behind-the-scenes tours including production and front-of-house areas are offered Mondays-Saturdays through Aug. 22, 9 a.m., \$10; seniors \$8; no charge for ages 22 and under.

Nightlife

(See Page 57 for addresses)

Cowgirl BBQ

Chris Jamison, folk/Americana/country, 8 p.m., no cover.

Del Charro

Mariachi Teotihuacan, with Stephen Montoya, Jaime Martinez, and Daniel Martinez, 7-9 p.m., no cover.

Duel Brewing

Singer/songwriter Gary Paul, folk/blues, 7 p.m., no cover.

El Farol

Guitarist/singer John Kurzweg, 8:30 p.m., no cover.

La Fiesta Lounge at La Fonda

C.S. Rockshow with Don Curry, Pete Springer, and Ron Crowder, 7:30-11 p.m., no cover.

Tiny's

Electric jam, hosted by Nick Wimett, 9 p.m.-midnight, no cover.

Vanessie

Pianist Bob Finnie, 6:30-9:30 p.m., call for cover.

THURSDAY 7/10

Gallery/Museum Openings

ART Santa Fe 2014 Vernissage

Santa Fe Community Convention Center, 201 W. Marcy St.
Opening-night gala and preview of works in the international contemporary art fair, 5 p.m., \$100, VIP pass \$125, 505-988-1234, ticketssantafe.org.

Classical Music

Season opener: Santa Fe Desert Chorale

Summer Festival Concert Series
Cathedral Basilica of St. Francis of Assisi, 131 Cathedral Place
The New World: Music of the Americas, music of Barber, Jennings, and Silva, 8 p.m., \$15-\$65 in advance, desertchorale.org, 505-988-2282. (See story, Page 30)

In Concert

Krishna Das & The Kirtan Wallah Tour

Greer Garson Theatre, SFUA&D, 1600 St. Michael's Dr. Kirtan, 7 p.m., \$36.50, 505-988-1234, ticketssantafe.org.

Las Alegres Ambulancias

Santa Fe Railyard Park, Paseo de Peralta and N. Guadalupe Street
The Afro-Colombian band kicks off the 11th Annual

International Folk Art Market at 8:15 p.m.; preceded by festivities beginning at 5 p.m. including food vendors, artist demonstrations, and hands-on activities for families, annual Artists' Procession begins at 7:30 p.m., no charge.

Santa Fe Bandstand

The Plaza
Bluegrass band The Riffers, 6-7 p.m.; folk-rock band The Ballroom Thieves, 7:15-8:45 p.m.; no charge, visit santafebandstand.org for the summer series schedule.

Theater/Dance

Preview: Good People

Santa Fe Playhouse, 142 E. De Vargas St., 505-988-4262
Ironweed Productions presents David Lindsay-Abaire's drama, 7:30 p.m. Thursdays-Saturdays, 4 p.m. Sundays through July 27, \$10. (See story, Page 22)

Books/Talks

Mark Nelson

Collected Works Bookstore, 202 Galisteo St., 505-988-4226
The author discusses *The Wastewater Gardener: Preserving the Planet One Flush at a Time*, 6 p.m.

Outdoors

Los Alamos green-hour hikes

Pajarito Environmental Education Center, 3540 Orange St., 505-662-0460
Meet at local trailheads for meandering hikes where kids set the pace, 9 a.m., no charge, pajaritoeec.org.

Events

Santa Fe Opera Backstage Tours

Santa Fe Opera, 301 Opera Dr., 505-986-5900
Behind-the-scenes tours including production and front-of-house areas are offered Mondays-Saturdays through Aug. 22, 9 a.m., \$10; seniors \$8; no charge for ages 22 and under.

Nightlife

(See Page 57 for addresses)

Cowgirl BBQ

Boxcar Bandits, North Texas skunkgrass, 8 p.m., no cover.

El Farol

Guitarras con Sabor, Gypsy Kings-style rhythms, 8 p.m., no cover.

La Boca

Chanteuse Nacha Mendez, 7-9 p.m., no cover.



Manitou Galleries shows paintings by William Haskell, 123 W. Palace Ave.



Chalk Farm Gallery shows paintings by Lukas Kandl, 729 Canyon Rd.

La Fiesta Lounge at La Fonda

C.S. Rockshow with Don Curry, Pete Springer, and Ron Crowder, 7:30-11 p.m., no cover.

La Posada de Santa Fe Resort and Spa

Pat Malone Jazz Trio, 6-9 p.m., no cover.

Palace Restaurant and Saloon

Limelight karaoke, 10 p.m., no cover.

Pranzo Italian Grill

Pianist David Geist, 6-9 p.m., call for cover.

Second Street Brewery

Joe West, psychedelic country, 6-9 p.m., no cover.

Shadeh

DJ Oona, retro rewind, 9 p.m.-4 a.m., no cover.

Tiny's

Eric George & Man No Sober, roots-rock duo, 8:30 p.m.-close, no cover.

Vanessie

Pianist Bob Finnie, 6:30-9:30 p.m., call for cover.

ABIQUIÚ

Events/Performances

Ghost Ranch Museum

U.S. 84, 14 miles north of Abiquiú, ghostranch.org. *Water for Life*, works by members of New Mexico Potters and Clay Artists, reception 2-4 p.m. Saturday, July 5, nmpotters.org.

ALBUQUERQUE

Events/Performances

Tom McDermott

Outpost Performance Space, 210 Yale Blvd. S.E., 505-268-0044

The New Orleans pianist performs with The Smooth Operators, 7:30 p.m. Saturday, July 5, \$15 at the door, outpostspace.org.

Las Alegres Ambulancias

National Hispanic Cultural Center, 1701 Fourth St., S.W.

Afro-Columbian band, 7:30 p.m. Sunday, July 6, \$17 in advance at amconcerts.org or holdmyticket.com, \$22 day of show, discounts available.

19th Annual Summer Thursday Jazz Nights at the Outpost

Outpost Performance Space, 210 Yale Blvd. S.E., 505-268-0044

Robert Lah Quartet, the pianist performs with vocalist Lori Michaels, bassist John Blackburn, and percussionist Jay Blea, 7:30 p.m. Thursday, July 10, \$15 in advance and at the door, students \$10, outpostspace.org.

JEMEZ SPRINGS

Jemez Historic Site Elder in Residence Program

18160 NM 4, 575-829-3530

Jemez tribal elders provide tours and share stories on-site Wednesdays-Sundays through July 13. Tours held 10 a.m. and 2 p.m., by site admission.

MADRID

Events/Performances

Madrid Old-Timers Show & Tell Day

Engine House Theatre, 2846 NM 14, 505-474-0344

Locals tell their stories and display a collection of photographs from 1920 to 1950. 2 p.m. Friday, July 4.

Johnsons of Madrid

2843 NM 14, 505-471-1054

Group show of paintings, sculpture, and fiber arts, reception 3-5 p.m. Saturday, July 5, through July 29.

PEÑASCO

Events/Performances

The Last Ritual Hamster Dance

Peñasco Theatre, 15046 NM 75, 575-587-2726

A one-woman acrobatic performance by Laura Stokes, 8 p.m. Saturday, July 5, call for details, adult content, ages 13-17 must be accompanied by an adult, 13+.

TAOS

Events/Performances

Fourth of July festivities

Taos Ski Valley, 116 Sutton Place

Parade 2 p.m., 13th Annual Rubber Duck Race 3 p.m., live music with Brent Berry y Tambien 3-6 p.m., no charge, skitaos.org or taosskivalley.com.

Michael McCormick Gallery

106-C Paseo del Pueblo Norte, 800-279-0879

Pastels by Bill Baker, reception 4-8 p.m. Friday, July 4, through Saturday, July 5.

Historic E.I. Couse and J.H. Sharp properties studio and garden open house

146 Kit Carson Rd., 575-770-3705

Guided tours of the properties and the garden from 3 to 5 p.m. Saturday, July 5, no charge.

203 Fine Art

203 Ledoux St., 575-751-1262

Modern Drawings, work by Couse's great-grandson

Dustin Leavitt, reception 5-7 p.m. Saturday, July 5, through July 28.

PEOPLE WHO NEED PEOPLE

Artists

23rd Annual National Pastel Paintings Exhibition

Prospectus and details for the Nov. 1-30 show held at Albuquerque's Expo New Mexico are available online at pastelsnm.org.

Fiestas de Cerrillos

Artists, craftspeople, and nonprofits may sign up to participate in the market held Sept. 20; contact Sandy Young for details, 505-438-2885, sandy@dirtdauberstoneware.com.

Fourth Annual National Juried Encaustic Wax Exhibit

Artists 18 years and older may enter up to three images for the Oct. 4-Nov. 2 exhibit held at the Encaustic Art Institute in Cerrillos; application deadline Monday, Aug. 4; award details and applications available online at juriedartservices.com.

Pecos Studio Art Tour

Artists are invited to join the annual tour held Saturday and Sunday, Sept. 27-28; call 505-670-7045 for information, entry deadline is July 31.

Santa Fe Photographic Workshops 25th-Anniversary Photography Contest

Photographers age 18 and over can enter works on the theme of water in one or more categories: landscape, portrait, documentary, abstract; deadline September 17, guidelines and fee information are available online at santafeworkshops.com.

SITE Santa Fe Spread 5.0

Grant applications sought from New Mexico studio artists interested in participating in SITE's recurring public dinners, designed to generate financial support for artistic innovation; all disciplines considered; application period continues to Sunday, July 6; details available online at spreadsantafe.com/apply; no phone calls, please.

Community

Fight Illiteracy

Literacy Volunteers of Santa Fe will train individuals willing to help adults learn to read, write, and speak English; details available online at lvsf.org, or call 505-428-1353.

Food for Santa Fe

The nonprofit needs help packing and distributing groceries at 6 and 8 a.m. Wednesdays and Thursdays, 505-471-1187 or 505-603-6600.

St. Elizabeth Shelter

Help with meal preparation at residential facilities and emergency shelters; other duties also available; contact Rosario, 505-982-6611, Ext. 108, volunteer@steshelter.org.

Santa Fe Humane Society and Animal Shelter

Dogs need individuals to take them on daily walks; all shifts available, call Katherine at 505-983-4309, Ext. 128.

Filmmakers/Performers/Writers

2014 Fiesta Melodrama auditions and call for props

Workshop rehearsal space, 3205-B Richards Lane, 505-988-4262.

Auditions held 2-4 p.m. Saturday, July 5; with improvisational work and cold readings; also in need of furniture and clothing for costumes.

New Mexico Dance Coalition Student Scholarships 2014

Two scholarship awards distributed in time or fall tuition; available to residents ages 8 and up; application forms and guidelines available online.

PASA KIDS

39th Annual Pancakes on the Plaza

Car show, arts & crafts booths, silly-hat contest, and music (American Jem performs at 1:30 p.m.), pancakes served 7 a.m.-noon Friday, July 4, events run until 5 p.m., \$8, pancakesontheplaza.com.

New Mexico Museum of Art Family Fun Day

107 W. Palace Ave., 505-476-5068

Explore the museum with guided activities and participate in an art project titled *Outside the Frame*, 1-4 p.m. Sunday, July 6, no charge.

Santa Fe Opera Backstage Tours

Santa Fe Opera, 301 Opera Dr., 505-986-5900

Behind-the-scenes tours including production and front-of-house areas are offered Mondays-Saturdays through Aug. 22, 9 a.m., \$10; seniors \$8; no charge for ages 22 and under. Saturdays are free and include a short program preceding the tour at 8:30 a.m.

Bee Hive Books: story times

328 Montezuma Ave., 505-780-8051

Music, stories, and movement for ages 3 and up, 10:30-11:15 a.m. every Wednesday in July, no charge.

Los Alamos green-hour hikes

Pajarito Environmental Education Center, 3540 Orange St., 505-662-0460

Meet at local trailheads for meandering hikes where kids set the pace, 9 a.m. Thursday, July 10, no charge, pajaritoeec.org. ◀



MUSIC

Poncho Sanchez

Santa Fe Sol Stage & Grill, 37 Fire Place
Veteran conguero, salsa singer, and band leader,
7:30 p.m. Saturday, July 12, \$28, 505-988-1234,
ticketsantafe.org.

Fidelio

Santa Fe Opera, 301 Opera Dr., 505-986-5900
Soprano Alec Penda sings Leonore and tenor Paul
Groves portrays Florestan in Stephen Wadsworth's
production of Beethoven's drama; opening at
8:30 p.m. Saturday, July 12, tickets begin at \$32,
standing room \$15.

The Impresario & Le Rossignol

Santa Fe Opera, 301 Opera Dr., 505-986-5900
Mozart's comic opera and Stravinsky's one-act
opera share a double bill; opening at 8:30 p.m.
Saturday, July 19, tickets begin at \$32, standing
room \$15.

Patti Littlefield and the Arlen Asher Quintet

Museum Hill Café, 710 Camino Lejo
Jazz set, 7 p.m., Thursday, July 24, \$25,
505-983-6820, santafemusiccollective.org.

Santa Fe Chamber Music Festival

July 20 marks the beginning of the 42nd season.
Performers include the Dover Quartet, the Orion
String Quartet, pianist Inon Barnatan, and violinist
William Preucil. Schedule available online at
santafechambermusic.com.

Danela Mack and Alex Shrader

St. John's United Methodist Church,
1200 Old Pecos Trail
Santa Fe Opera mezzo-soprano and tenor,
accompanied by pianist Joseph Illick, 4 p.m.
Thursday, July 31, \$22.50-\$75, 505-988-1234,
ticketsantafe.org, visit performancesantafe.org
for the 2014-2015 season schedule.

Woody Shaw tribute

Santa Fe Center for Spiritual Living,
505 Camino de los Marquez
Featuring J. Q. Whitcomb on trumpet,
Ben Finberg on trombone, John Rangel on piano,
Andy Zadrozny on bass, and John Trentacosta on
drums, 7:30 p.m. Friday, Aug. 1, \$15 at the door.

Ray Lamontagne

The Downs of Santa Fe, 27475 W. Frontage Rd.
Singer/songwriter, 6:30 p.m. Tuesday, Aug. 5,
with Belle Brigade, \$40 and \$62, 505-988-1234,
ticketsantafe.org.

The Hold Steady

Santa Fe Sol Stage & Grill, 37 Fire Place
Rock band, 7:30 p.m. Wednesday, Aug. 6,
\$25, 505-988-1234, ticketsantafe.org.

Brenda Rae

St. John's United Methodist Church,
1200 Old Pecos Trail
Santa Fe Opera soprano, accompanied by pianist
In Sun Suh, 4 p.m., Sunday, Aug. 10, \$22.50-\$75,
505-988-1234.

Sixth Annual Mariachi and Dance Concert

Buffalo Thunder Resort & Casino
Performers include Johnny Hernandez, Mariachi
Sonido Nuevo, Allen Muñoz, and Mariachi
Buenaventura, silent auction 5:30-6:30 p.m.,
music starts at 7 p.m. Saturday, Aug. 9, \$18 in
advance at tickets.com, \$20 at the door, proceeds
benefit the nonprofit organization Sangre de Cristo
Funeral Fund.

Avett Brothers

Santa Fe Opera, 301 Opera Dr.
North Carolina-based folk-pop band, 8 p.m.
Wednesday, Aug. 27, \$35-\$55 in advance,
ticketmaster.com, \$40-\$60 day of show.

THEATER/DANCE

Wassa Wassa African Dance & Drum Festival benefit performance

Railyard Performance Center, 1611 Paseo de Peralta
Featuring Soriba Fofana & Alhassane Camara,
traditional music and dance; Moussa Kourouma &
Ousmane Sylla, circus acrobatics, 8 p.m. Saturday,
July 12, \$10 donation at the door, soribafofana.com.

Flamenco's Next Generation

Lodge at Santa Fe, 750 N. St. Francis Dr.
Flamenco group from the María Benítez Institute
for Spanish Arts, 2 p.m. Sundays, July 13-Aug. 24,
institutespanisharts.org.

Aspen Santa Fe Ballet

Las Campanas Clubhouse, 132 Clubhouse Dr.
Raise the Barre benefit for the ballet, 6 p.m.
Monday, July 14, \$250, aspensantafeballet.com,
505-983-5591.

Juan Siddi Flamenco Santa Fe

The Lencis
Dance ensemble, 8 p.m. July 18, July 27, Aug. 3,
and Aug. 9, ticketsantafe.org, 505-988-1234.

Sylvia

Santa Fe Playhouse, 142 E. De Vargas St.,
505-988-4262
The New Mexico Actors Lab presents A.R. Gurney's
comedy, 7:30 p.m. Thursdays-Saturdays,
4 p.m. Sundays, July 31-Aug. 17, \$10-\$25,
santafeplayhouse.org.

HAPPENINGS

Santa Fe International Folk Art Market

Museum Hill
More than 150 folk artists from more than
50 countries, July 11-13, 505-992-7600,
folkartmarket.org.

Santa Fe Greek Festival

Pavilion Room, Eldorado Hotel & Spa
Food, music, dancing, and beer and wine;
11 a.m.-9 p.m. Saturday and Sunday, July 12-13,
\$3, ages 12 and under no charge.

SITelines.2014: Unsettled Landscapes

Museum Hill
SITE Santa Fe's biennial focusing on contemporary
art of the Americas; ticketed opening-weekend
programming (July 17-19, at various venues);
preview exhibit and cocktail party; gala dinner;
performances by artist Pablo Helguera; curator's
introduction; artists' panel discussion; tickets
available online at sitesantafe.org, or call
505-989-1199.

Behind Adobe Walls Home and Garden Tour

Buses depart from Hotel Santa Fe,
1501 Paseo de Peralta
75th annual bus tour of private residences and
gardens, sponsored by the Santa Fe Garden Club,
12:15-4:45 p.m. Tuesday, July 22 and July 29,
\$75 per tour, \$22 optional lunch, contact Westwind
Travel, 505-984-0022, thesantafegardenclub.org.

¡Viva la Cultura! Hispanic Cultural Festival

Museum of Spanish Colonial Art,
750 Camino Lejo, Museum Hill
Tuesday, July 22, through Saturday, July 26;
including performances by Cipriano Vigil y la
Familia Vigil and Nosotros, a Spanish Market pre-
view, lunch and dinner events, and film screenings;
hosted by the Spanish Colonial Arts Society, call
505-982-2226, Ext. 109, for advance tickets.

Salaam-Shalom

Santa Fe Farmers Market Pavilion,
1607 Paseo de Peralta
Annual gathering of young women from Palestine
and Israel in conversation about their experiences

at the 2014 Creativity for Peace summer-camp
session, 4:30-6 p.m., \$25 in advance at creativityfor-
peace.com, \$30 at the door.

Fifth Annual Objects of Art Santa Fe

El Museo Cultural de Santa Fe,
555 Camino de la Familia
Contemporary, ethnic, and antique objects, includ-
ing sculpture, jewelry, furniture, and books, ticketed
preview 6-9 p.m. Thursday, Aug. 14 (\$50, benefits
New Mexico PBS), show runs 11 a.m.-6 p.m. Friday-
Sunday, Aug. 15-17, \$10 run of show in advance,
\$13 at the door, objectsofartsantafe.com.

Antique American Indian Art Show Santa Fe 2014

El Museo Cultural de Santa Fe,
555 Camino de la Familia
Presenting works from national galleries; preview
party 6-9 p.m. Tuesday, Aug. 19; show 11 a.m.-6
p.m. Wednesday and Thursday, Aug. 20-21, preview
party and Institute of American Indian Arts benefit
\$50 in advance and at the door, show tickets \$10
run of show in advance, \$13 at the door, tickets
available online at antiqueindianartshow.com.

39th Annual Wheelwright Museum of the American Indian Benefit Auction

704 Camino Lejo, Museum Hill
Silent auction and preview of live auction
items 4-6 p.m. Thursday, Aug. 21, Collector's Table
10 a.m. Friday, Aug. 22, followed by live auction
preview and live auction; catered lunch available,
505-982-4636, wheelwright.org.

Indigenous Fine Art Market- IFAM

Santa Fe Rail yard
More than 400 Native artists are slated to partici-
pate in this inaugural market Thursday-Saturday,
Aug. 21-23; events include a kickoff Glow Dance
Party, youth programming, and film screenings,
indigefam.org.

93rd Annual Santa Fe Indian Market Launch Party

On The Plaza
Thursday, Aug. 21; sneak preview Friday, Aug. 22;
live auction dinner and gala Saturday, Aug. 23;
market Saturday and Sunday, Aug. 22-23; swaia.org,
505-983-5220.



Folk-pop band Avett Brothers performs at the Santa Fe Opera Aug. 27.

AT THE GALLERIES

Allan Houser Gallery

125 Lincoln Ave., 505-982-4705.

Within the Seventh Fire, works on paper and paintings by Ben Wright, through Wednesday, July 9.

Argos Studio Gallery & Santa Fe Etching Club

1211 Luisa St., 505-988-1814

Susan Cornish: Prints and Drawings, through July 13.

Bellas Artes

653 Canyon Rd., 505-983-2745

Black White Silver, group show, through Aug. 30.

Chalk Farm Gallery

729 Canyon Rd., 505-983-7125.

Magic Square, paintings by Lukas Kandl, through July.

Charlotte Jackson Fine Art

554 S. Guadalupe St., 505-989-8688

Anne Truitt: Paintings and Works on Paper, through July 27. (See story, Page 42)

Chiaroscuro Contemporary Art

702½ Canyon Rd., 505-992-0711

Australian Contemporary Indigenous Art III, through Aug. 3.

Hunter Kirkland Contemporary

200-B Canyon Rd., 505-984-2111.

Wilderness Within, pastel and oil paintings by Rick Stevens, through July 6.

Meyer Gallery

225 Canyon Rd., 505-983-1434

Chris Young: A One Man Exhibit, through Thursday, July 10.

The Owings Gallery

120 E. Marcy St., 505-982-6244

Photographs by Luis Gonzalez Palma; new work by painter Ray Abeyta through July 14.

Santa Fe Clay

545 Camino de la Familia, 505-984-1122

Finished With Fire, works by ceramicists Bonnie Lynch and Mary Roehm, through Aug. 2.

Taylor Dale Fine Tribal Art

129 W. San Francisco St., 505-670-3488

The Art of New Guinea, featuring items from the Thomas-Rosen collection, through July.

William Siegal Gallery

540 S. Guadalupe St., 505-820-3300

Ruah, works on paper by Judy Tuwaletstiwa, through July 22.

Zane Bennett Contemporary Art

435 S. Guadalupe St., 505-982-8111

New Media Transforms Tradition, group show, through July 19.

MUSEUMS & ART SPACES

Santa Fe

Santa Fe Center for Contemporary Arts

1050 Old Pecos Trail, 505-982-1338

The Curve, Center's annual show of award-winning photography • *Dear Erin Hart*, multimedia exhibit by Jessamyn Lovell • *Air Force: Aesthetic Experiments in Aviation*, works on paper created via remote-controlled airplane; exhibits through Aug. 10. Open Thursdays-Sundays; ccasantafe.org.

Georgia O'Keeffe Museum

217 Johnson St., 505-946-1000

Georgia O'Keeffe and Ansel Adams: The Hawaii Pictures • *Abiquiú Views*; through Sept. 17. Open daily; okeeffemuseum.org.



Vivo Contemporary shows paintings by George Duncan in the group show *In the Mood*, 725 Canyon Rd.

Museum of Contemporary Native Arts

108 Cathedral Place, 505-983-1777

We Hold These Truths, contemporary paper baskets by Shan Goshorn • *Brandywine Workshop Collection*, works by indigenous artists donated to the Philadelphia facility • *Articulations in Print*, group show • *Bon à Tիրer*, prints from the permanent collection • *Native American Short Films*, continuous loop of five films from Sundance Institute's Native American and Indigenous Program; all exhibits up through July. Closed Tuesdays; iaia.edu/museum.

Museum of Indian Arts & Culture

710 Camino Lejo, Museum Hill, 505-476-1269

Turquoise, Water, Sky: The Stone and Its Meaning, highlights from the museum's collection of jewelry • *Native American Portraits: Points of Inquiry*, vintage and contemporary photographs, through January 2015 • *The Buchsbaum Gallery of Southwestern Pottery*, traditional and contemporary works • *Here, Now, and Always*, artifacts from the museum collection. Open daily; indianartsandculture.org.

Museum of International Folk Art

706 Camino Lejo, Museum Hill, 505-476-1200

Between Two Worlds: Folk Artists Reflect on the Immigrant Experience, International Folk Arts Week kick-off exhibit on immigration, reception with artist meet-and-greet, live music by Savor, workshops, and talks 1-4 p.m. Sunday, July 6 • *Wooden Menagerie: Made in New Mexico*, early 20th-century carvings, through Feb. 15, 2015 • *Tako Kichi: Kite Crazy in Japan*, exhibition of Japanese kites, through July 27 • *New World Cuisine: The Histories of Chocolate, Mate y Más* • *Multiple Visions: A Common Bond*, international collection of toys and folk art • *Brasil and Arte Popular*, pieces from the museum's collection, through Aug. 10. Closed Mondays; internationalfolkart.org.

Museum of Spanish Colonial Art

750 Camino Lejo, Museum Hill, 505-982-2226

Secrets of the Symbols: The Hidden Language of Spanish Colonial Art, opening Wednesday, July 9 • *San Ysidro/St. Isidore the Farmer*, bultos, retablos, straw appliqué, and paintings on tin • *Recent Acquisitions*, colonial and 19th-century Mexican art, sculpture, and furniture; also, work by young Spanish Market artists • *The Delgado Room*, late-colonial-period re-creation; spanishcolonial.org; open daily through Sept. 1.

New Mexico History Museum/ Palace of the Governors

113 Lincoln Ave., 505-476-5200

Poetics of Light: Pinhole Photography, through March 29, 2015 • *Transformed by New Mexico*, work by photographer Donald Woodman, through Oct. 12 • *Water Over Mountain*, Channing Huser's photographic installation • *Telling New Mexico: Stories From Then and Now*, core exhibit • *Santa Fe Found: Fragments of Time*, the archaeological and historical roots of Santa Fe; nmhistorymuseum.org; open daily through Oct. 7.

New Mexico Museum of Art

107 W. Palace Ave., 505-476-5072

Local Color: Judy Chicago in New Mexico 1984-2014, focusing on public and personal projects, through Oct. 12 • *Southwestern Allure: The Art of the Santa Fe Art Colony*, including early 20th-century paintings by George Bellows, Andrew Dasburg, Marsden Hartley, and Cady Wells, through July 27 • *Focus on Photography*, rotating exhibits • *Beneath Our Feet*, photographs by Joan Myers • *Grounded*, landscapes from the museum collection • *Photo Lab*, interactive exhibit explaining the processes used to make color and platinum-palladium prints from the collection, through March 2015 • *New Mexico Art Tells New Mexico History*, including works by E. Irving Couse, T.C. Cannon, and Agnes Martin, through 2015 • *Spotlight on Gustave Baumann*, works from the museum's collection, through 2015. Open daily through Oct. 7; nmartmuseum.org.

Pablita Velarde Museum of Indian Women in the Arts

213 Cathedral Place, 505-988-8900

Closed Mondays; pvmiwa.org.

Poeh Cultural Center and Museum

78 Cities of Gold Rd., 505-455-3334

Nah Poeh Meng, 1,600-square-foot installation highlighting the works of Pueblo artists and Pueblo history. Closed Saturdays and Sundays; poehcenter.org.

Wheelwright Museum of the American Indian

704 Camino Lejo, Museum Hill, 505-982-4636

Works by Diné photographer Will Wilson, through April 19, 2015. Core exhibits include contemporary and historic Native American art. Open daily; wheelwright.org.

Albuquerque

Albuquerque Museum of Art & History

2000 Mountain Rd. N.W., 505-243-7255

Everybody's Neighbor: Vivian Vance, family memorabilia and the museum's photo archives of the former Albuquerque resident, through January 2015 • *Arte en la Charrería: The Artisanry of Mexican Equestrian Culture*, more than 150 examples of craftsmanship and design distinctive to the charro. Closed Mondays; cabq.gov/culturalservices/albuquerque-museum/general-museum-information; closed Mondays.

Holocaust and Intolerance Museum of New Mexico

616 Central Ave. S.W., 505-247-0606

Exhibits on overcoming intolerance and prejudice; nmholocaustmuseum.org; closed Sundays and Mondays.

Indian Pueblo Cultural Center

2401 12th St. N.W., 866-855-7902

Our Land, Our Culture, Our Story, historical overview of the Pueblo world, and contemporary artwork and craftsmanship of each of the 19 pueblos. Weekend Native dance performances; indianpueblo.org.

Maxwell Museum of Anthropology

UNM campus, 1 University Blvd. N.E., 505-277-4405

The museum's collection includes individual archaeological, ethnological, archival, photographic, and skeletal items. Closed Sundays and Mondays; maxwellmuseum.unm.edu.

National Hispanic Cultural Center

1701 Fourth St. S.W., 505-604-6896

¡Papell! Pico, Rico y Chico, group show of works in the traditional art of papel picado (cut paper). Closed Mondays; nationalhispaniccenter.org.

UNM Art Museum

1 University of New Mexico Blvd., 505-277-4001

Oscar Muñoz: Biografías, video works; *Luz Restirada*, Latin American photography from the museum collection, through July 26. Closed Sundays and Mondays; unmartmuseum.org.

Los Alamos

Bradbury Science Museum

1350 Central Ave., 505-667-4444

Information on the history of Los Alamos and the Manhattan Project as well as over 40 interactive exhibits. Open daily; lanl.gov/museum.

Los Alamos Historical Museum

1050 Bathtub Row, 505-662-4493

Core exhibits on area geology, homesteaders, and the Manhattan Project. Housed in the Guest Cottage of the Los Alamos Ranch School. Open daily; losalamoshistory.org.

Pajarito Environmental Education Center

3540 Orange St., 505-662-0460

Exhibits of flora and fauna of the Pajarito Plateau; herbarium, live amphibians, and butterfly and xeric gardens. Closed Sundays and Mondays; pajaritoeec.org.

Taos

E.L. Blumenschein Home and Museum

222 Ledoux St., 575-758-0505

Color-field paintings by Donald Roy Thompson, through Aug. 10. Hacienda art from the Blumenschein family collection, European and Spanish colonial antiques. Open daily; taohistoricmuseums.org.

Harwood Museum of Art

238 Ledoux St., 575-758-9826

Highlights From the Gus Foster Collection, contemporary works, through Sept. 7. Open daily through October; harwoodmuseum.org.

La Hacienda de los Martinez

708 Hacienda Way, 575-758-1000

One of the few Northern New Mexico-style, Spanish-colonial "great houses" remaining in the American Southwest. Built in 1804 by Severino Martinez. Open daily; taohistoricmuseums.org.

Millicent Rogers Museum

1504 Millicent Rogers Rd., 575-758-2462

Historical collections of Native American jewelry, ceramics, and paintings; Hispanic textiles, metalwork, and sculpture; and contemporary jewelry. Open daily through October; millicentrogers.org.

Taos Art Museum at Fechin House

227 Paseo del Pueblo Norte, 575-758-2690

Intimate and International: The Art of Nicolai Fechin, paintings and drawings, through Sept. 21. Housed in the studio and home that artist Nicolai Fechin built for his family between 1927 and 1933. Closed Mondays; taosartmuseum.org.



Steve Schapiro: *Andy Loves Edie, Andy Warhol and Edie Sedgwick, New York* 1965, gelatin silver print

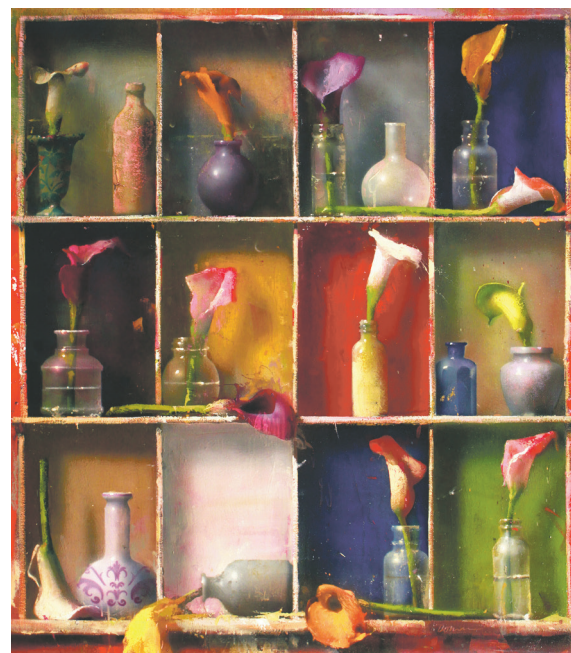
Monroe Gallery of Photography, 112 Don Gaspar Ave., 505-992-0800

Steve Schapiro's work in photography spans more than five decades, during which he captured a multitude of happenings in American life and culture that includes the civil rights movement, Bobby Kennedy's presidential campaign, and the presence of celebrities in the realms of politics, cinema, art, and music. *Once Upon a Time in America*, an exhibit of his work, opens with a 5 p.m. reception on Saturday, July 5.

David Dornan: *Callabash* 2014, oil on canvas

Meyer East Gallery, 225 Canyon Road, 505-983-1657

The gallery is showing an exhibit of new works by David Dornan. He paints artist materials like paintbrushes, rags, and bottles of varnish — as well as flowers, tubes of lipstick, and various kinds of small containers — arranging them in colorful collections by type and rendering them with a high degree of realism to explore the subtle differences among them. The show opens on Friday, July 4, with a 5 p.m. reception and barbecue catered by the Ranch House.



EXHIBITIONISM



A PEEK AT WHAT'S SHOWING AROUND TOWN

Beatrice Mandelman: *Rocks Near Gallup* circa 1945, gouache on paper

David Richard Gallery, 544 S. Guadalupe St., 505-983-9555

The gallery presents *Landscapes and Cloudscapes: As Seen Through Gestural Abstract Painting*, an exhibition of modernist and contemporary works by Ward Jackson, Wolf Kahn, Matsumi Kanemitsu, Beatrice Mandelman, Forrest Moses, and Jon Schueler. The artists use abstraction to explore imagery of land and sky. The show is on view through Aug. 24. There is no reception.



Rimi Yang: *Queen's New March* 2014, oil on canvas

Blue Rain Gallery, 130 Lincoln Ave., 505-954-9902

The Year of the Horse, an exhibition of paintings by Rimi Yang and glass sculpture by Shelley Muzylowski Allen, is showing at Blue Rain Gallery. Yang's expressionistic, horse-themed canvases combine abstract and figurative imagery in a patchwork of colors. Muzylowski Allen's glass works capture the same creature in a variety of poses that accentuate the beauty of its form. The opening reception is at 5 p.m. on Friday, July 4.



Ben Steele: *Tamed* 2014, oil on canvas

Giacobbe-Fritz Fine Art, 702 Canyon Road, 505-986-1156

Ben Steele recontextualizes significant works by Leonardo da Vinci, John Singer Sargent, Andy Warhol, and others in compositions that reflect his interest in photorealism and Pop Art. He layers applications of acrylics and oils using a silk-screen technique, inserting images from the past into his own pieces. *Art Circus*, an exhibition of Steele's paintings, opens with a reception at 5 p.m. on Friday, July 4.

